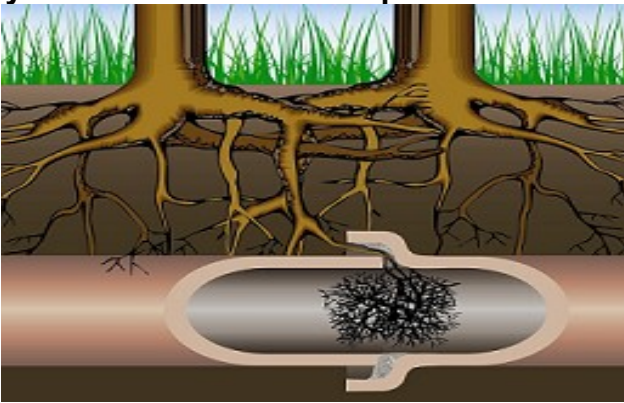


## What do tree roots do?

Tree root systems supply the plant with water and nutrients, essential for the plants survival. Tree roots will often find old and cracked/damaged sewer pipes, as these are perfect food sources. Roots continue to grow inside these pipes, causing blockages and leading to sewer overflows and flooding. The extent of the root systems varies between species.



## Prevention is better than cure!

Choosing appropriate plant species for your garden is very important – prevention is far better than cure!

Before you plant trees, make sure you know where sewer pipes and other services are located. More information and sewerage diagrams can be obtained from Council's Customer Service Centre and by using Before You Dig Australia.

For further information on suitable trees and shrubs, talk to your local nursery

## Hawkesbury City Council Wastewater

Telephone 02 45604444

The following plants were identified by the Water Directorate and **can block sewers**, and cause damage to utilities and structures. Plant them with care in the suburban environment :

Botanical Name	Common Name	Damage Rating
<i>Cinnamomum camphora</i>	Camphor Laurel	Extreme
<i>Ficus species</i>	Fig Trees & Rubber Plants	Extreme
<i>Populus species</i>	Poplars	Extreme
<i>Salix species</i>	Willows	Extreme
<i>Araucaria species</i>	Norfolk island & Bunya Pines	Very High
<i>Brachychiton acerifolium</i>	Illawarra Flame Tree	Very High
<i>Casuarina species</i>	Casuarinas	Very High
<i>Erythrina species</i>	Coral Trees	Very High
<i>Eucalyptus species</i>	Large Gum Trees	Very High
<i>Jacaranda mimosifolia</i>	Jacaranda	Very High
<i>Liquidambar styraciflau</i>	Liquidambar, Sweet Gum	Very High
<i>Melia azedarach</i>	Australian white Cedar	Very High
<i>Pinus species</i>	Pine Trees	Very High
<i>Platanus acerifolia</i>	Plane Trees	Very High

Botanical Name	Common Name	Damage Rating
<i>Schinus molle</i>	Pepper Tree	Very High
<i>Ulmus species</i>	Elms	Very High
<i>Bougainvillea species</i>	Bougainvillea's	High
<i>Cortaderia selloana</i>	Pampas Grass	High
<i>Grevillea robustus</i>	Silky Oak	High
<i>Grevillea spp.</i>	Grevilleas	High
<i>Ilex species</i>	Hollies	High
<i>Lagunaria patersonii</i>	Norfolk Island Hibiscus	High
<i>Ligustrum species</i>	Privets	High
<i>Lophostemon confetus</i>	Brush Box, Tristania	High
<i>Magnolia species</i>	Magnolias	High
<i>Nerium oleander</i>	Oleander	High
<i>Phoenix canariensis</i>	Canary island Date Palm	High
<i>Phyllostachus species</i>	Bamboos (non-clamping)	High
<i>Toxicodendron species</i>	Rhus Trees	High
<i>Wisteria species</i>	Chinese Wisteria	High

