



# **Attachment 4 to Item 2.1.1.**

---

## **Hydraulic Set**

Date of meeting: 27 February 2025  
Location: Council Chambers  
Time: 10am





# PROPOSED HOTEL & ACCOMODATION 27 DOUGLAS ROAD, KURRAJONG HEIGHTS HYDRAULIC SERVICES TO DA STAGE



LOCALITY PLAN  
NOT TO SCALE - COURTESY OF SIX MAPS

DRAWING SCHEDULE	
H1101	COVER PAGE & DRAWING SCHEDULE
H1401	SITE PLAN
H2101	PRESSURE SERVICES PLAN - LOWER GROUND
H2102	GRAVITY SERVICES PLAN - LOWER GROUND
H2801	SCHEMATIC DETAIL
H5101	DETAIL SHEET

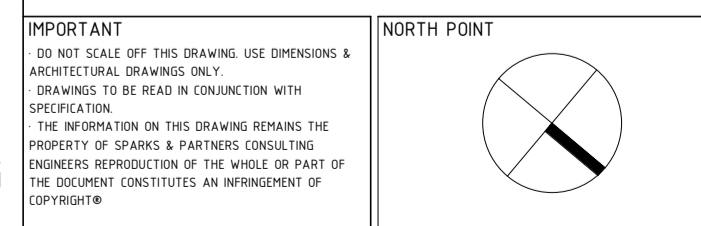
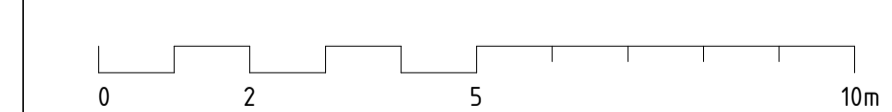
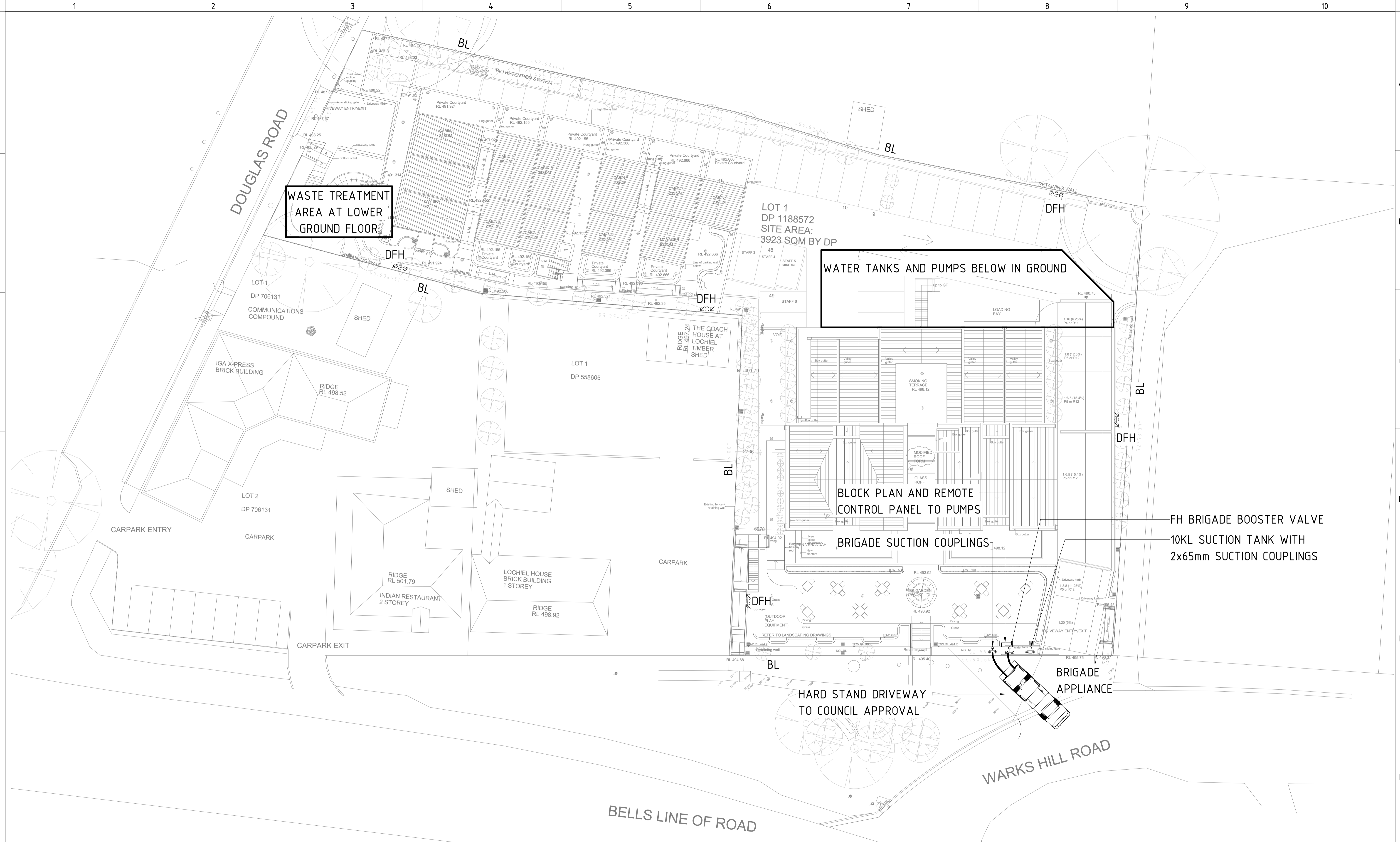
## AUTHORITY

- HAWKESBURY CITY COUNCIL
- NSW RURAL FIRE & RESCUE

DA ISSUE

<p><b>IMPORTANT</b></p> <p>DO NOT SCALE OFF THIS DRAWING. USE DIMENSIONS &amp; ARCHITECTURAL DRAWINGS ONLY.</p> <p>BEFORE TO BE READ IN CONJUNCTION WITH SPECIFICATION.</p> <p>THE INFORMATION ON THIS DRAWING REMAINS THE PROPERTY OF SPARKS &amp; PARTNERS CONSULTING ENGINEERS. REPRODUCTION OF THE WHOLE OR PART OF THIS DOCUMENT CONSTITUTES AN INFRINGEMENT OF COPYRIGHT.</p>	<p>NORTH POINT</p>	<table border="1"> <thead> <tr> <th>DATE</th> <th>AMENDMENT</th> <th>INIT</th> <th>REV</th> <th>DATE</th> <th>AMENDMENT</th> <th>INIT</th> <th>REV</th> </tr> </thead> <tbody> <tr> <td>24.03.21</td> <td>PRELIMINARY ISSUE</td> <td>VG</td> <td>P1</td> <td></td> <td></td> <td></td> <td></td> </tr> <tr> <td>07.12.21</td> <td>PRELIMINARY DA ISSUE</td> <td>CA</td> <td>P2</td> <td></td> <td></td> <td></td> <td></td> </tr> <tr> <td>13.12.21</td> <td>DA ISSUE</td> <td>KZ</td> <td>A</td> <td></td> <td></td> <td></td> <td></td> </tr> </tbody> </table>	DATE	AMENDMENT	INIT	REV	DATE	AMENDMENT	INIT	REV	24.03.21	PRELIMINARY ISSUE	VG	P1					07.12.21	PRELIMINARY DA ISSUE	CA	P2					13.12.21	DA ISSUE	KZ	A					<p>CLIENT</p> <p>BALMA PROJECTS PTY LTD</p>	<p>PROJECT</p> <p>PROPOSED HOTEL &amp; ACCOMODATION 27 DOUGLAS ROAD, KURRAJONG HEIGHTS</p>	<p>ARCHITECT</p> <p><b>ARCHEBIOSIS</b> ARCHITECTS</p>	<p>STRUCTURAL</p> <p>MECHANICAL</p> <p>ELECTRICAL</p> <p>CIVIL</p>	<p>ELIANT</p> <p>BALMA PROJECTS PTY LTD</p>	<p>PROJECT</p> <p>PROPOSED HOTEL &amp; ACCOMODATION 27 DOUGLAS ROAD, KURRAJONG HEIGHTS</p>	<p>SPARKS+PARTNERS CONSULTING ENGINEERS HYDRAULIC   CIVIL   FIRE</p> <p>sparksandpartners.com.au Level 1, 91 George Street   Parramatta   NSW 2150 P 02 9891 5033   E admin@sparksandpartners.com.au</p> <p>FPA AUSTRALIA CORPORATE MEMBER</p> <p>DNV-GL ISO 9001</p> <p>HCAA</p>	<p>DRAWING TITLE</p> <p>HYDRAULIC SERVICES COVER PAGE &amp; DRAWING SCHEDULE</p>
		DATE	AMENDMENT	INIT	REV	DATE	AMENDMENT	INIT	REV																																	
24.03.21	PRELIMINARY ISSUE	VG	P1																																							
07.12.21	PRELIMINARY DA ISSUE	CA	P2																																							
13.12.21	DA ISSUE	KZ	A																																							
<p>REFERENCES</p>	<p>ARCHITECT</p> <p><b>ARCHEBIOSIS</b> ARCHITECTS</p>	<p>ELIANT</p> <p>BALMA PROJECTS PTY LTD</p>	<p>PROJECT</p> <p>PROPOSED HOTEL &amp; ACCOMODATION 27 DOUGLAS ROAD, KURRAJONG HEIGHTS</p>	<p>SPARKS+PARTNERS CONSULTING ENGINEERS HYDRAULIC   CIVIL   FIRE</p> <p>sparksandpartners.com.au Level 1, 91 George Street   Parramatta   NSW 2150 P 02 9891 5033   E admin@sparksandpartners.com.au</p> <p>FPA AUSTRALIA CORPORATE MEMBER</p> <p>DNV-GL ISO 9001</p> <p>HCAA</p>	<p>DRAWING TITLE</p> <p>HYDRAULIC SERVICES COVER PAGE &amp; DRAWING SCHEDULE</p>																																					
												<table border="1"> <thead> <tr> <th>DATE</th> <th>DRAWN</th> <th>QH</th> <th>DESIGNED</th> <th>GS</th> <th>CHECKED</th> <th>LD</th> </tr> </thead> <tbody> <tr> <td>MAR 2021</td> <td></td> <td></td> <td></td> <td></td> <td></td> <td></td> </tr> </tbody> </table>		DATE	DRAWN	QH	DESIGNED	GS	CHECKED	LD	MAR 2021																					
DATE	DRAWN	QH	DESIGNED	GS	CHECKED	LD																																				
MAR 2021																																										
												<table border="1"> <thead> <tr> <th>PROJECT No</th> <th>SCALE</th> <th>N.T.S.</th> <th>SIZE</th> <th>A1</th> <th>REVISION</th> </tr> </thead> <tbody> <tr> <td>21078</td> <td></td> <td></td> <td></td> <td></td> <td></td> </tr> </tbody> </table>		PROJECT No	SCALE	N.T.S.	SIZE	A1	REVISION	21078																						
PROJECT No	SCALE	N.T.S.	SIZE	A1	REVISION																																					
21078																																										
												<table border="1"> <thead> <tr> <th>DRAWING No</th> <th>H1101</th> <th>A</th> </tr> </thead> <tbody> <tr> <td></td> <td></td> <td></td> </tr> </tbody> </table>		DRAWING No	H1101	A																										
DRAWING No	H1101	A																																								





DATE	AMENDMENT	INIT	REV	DATE	AMENDMENT	INIT	REV
24.03.21	PRELIMINARY ISSUE	VG	P1				
07.12.21	PRELIMINARY DA ISSUE	CA	P2				
13.12.21	DA ISSUE	KZ	A				
11.07.23	DA ISSUE AMENDED	AD	B				

STRUCTURAL	MECHANICAL	ELECTRICAL	CIVIL

CLIENT	BALMA PROJECTS PTY LTD
BUILDER	

PROJECT	PROPOSED HOTEL & ACCOMODATION 27 DOUGLAS ROAD, KURRAJONG HEIGHTS
ARCHITECT	<b>ARCHEBIOSIS</b> ARCHITECTS

**SPARKS+PARTNERS**  
CONSULTING ENGINEERS  
HYDRAULIC | CIVIL | FIRE

sparksandpartners.com.au  
Level 1, 91 George Street | Parramatta | NSW 2150  
P 02 9891 5033 | E admin@sparksandpartners.com.au

FPA AUSTRALIA  
CORPORATE MEMBER

DNV-GL  
ISO 9001

HCAA

DRAWING TITLE						
HYDRAULIC SERVICES SITE PLAN						
DATE	DRAWN	QH	DESIGNED	GS	CHECKED	LD
MAR 2021	SCALE	1:200	SIZE	A1	REVISION	
PROJECT No	DRAWING No					
21078	H1401		B			

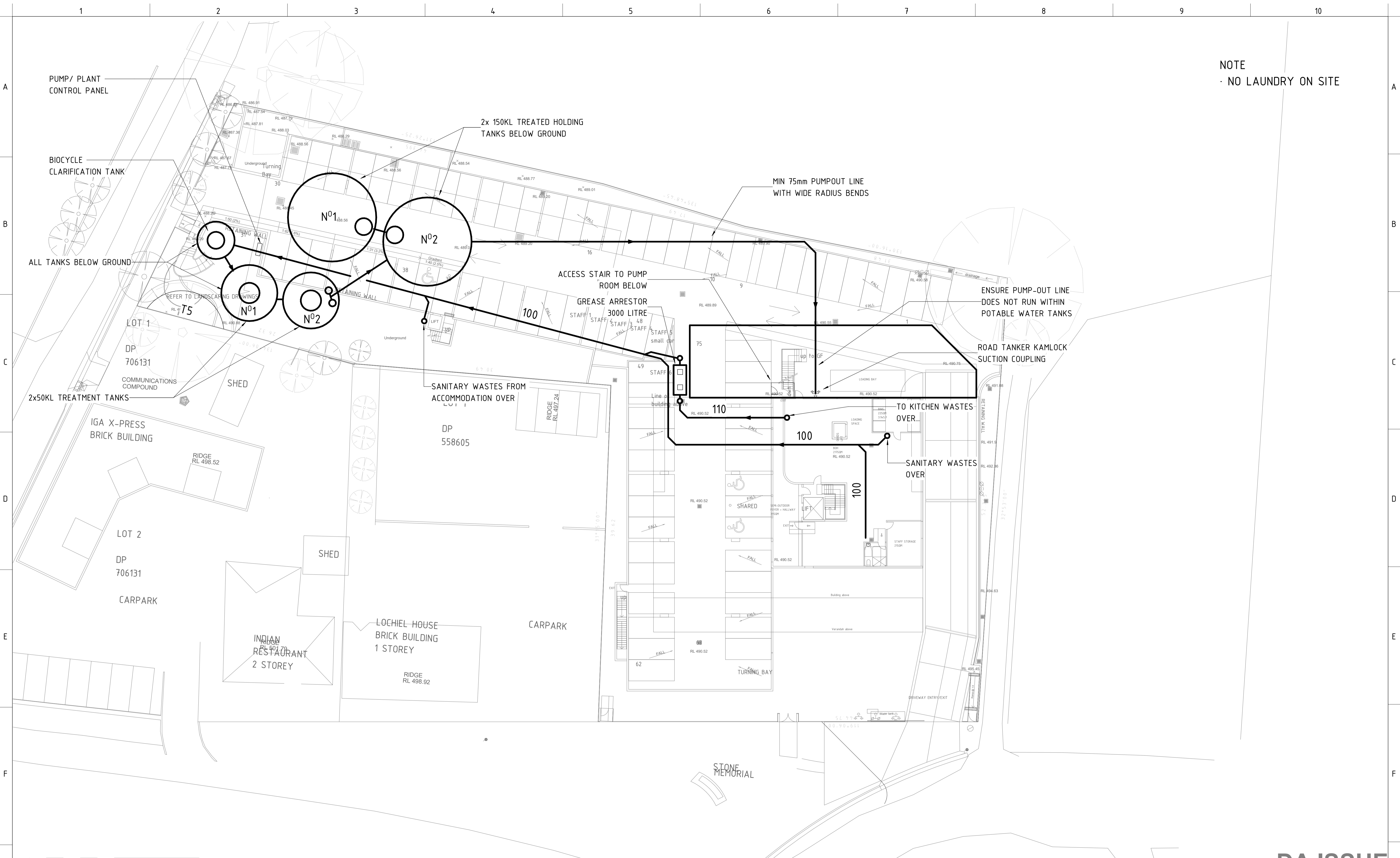
**DA ISSUE**







NOTE  
· NO LAUNDRY ON SITE



DA ISSUE

IMPORTANT  
DO NOT SCALE OFF THIS DRAWING USE DIMENSIONS & ARCHITECTURAL DRAWINGS ONLY.  
DRAWINGS TO BE READ IN CONJUNCTION WITH SPECIFICATION.  
THE INFORMATION ON THIS DRAWING REMAINS THE PROPERTY OF SPARKS & PARTNERS CONSULTING ENGINEERS. REPRODUCTION OF THE WHOLE OR PART OF THIS DOCUMENT CONSTITUTES AN INFRINGEMENT OF COPYRIGHT.

REFERENCES

DATE	AMENDMENT	INIT	REV	DATE	AMENDMENT	INIT	REV
24.03.21	PRELIMINARY ISSUE	VG	P1				
07.12.21	PRELIMINARY DA ISSUE	CA	P2				
13.12.21	DA ISSUE	KZ	A				
11.07.23	DA ISSUE AMENDED	AD	B				
30.10.24	DA ISSUE AMENDED	AB	C				

STRUCTURAL	MECHANICAL	ELECTRICAL	CIVIL

CLIENT	BALMA PROJECTS PTY LTD
BUILDER	

PROJECT	PROPOSED HOTEL & ACCOMODATION 27 DOUGLAS ROAD, KURRAJONG HEIGHTS
ARCHITECT	<b>ARCHEBIOSIS</b> ARCHITECTS

**SPARKS+PARTNERS**  
CONSULTING ENGINEERS  
HYDRAULIC | CIVIL | FIRE

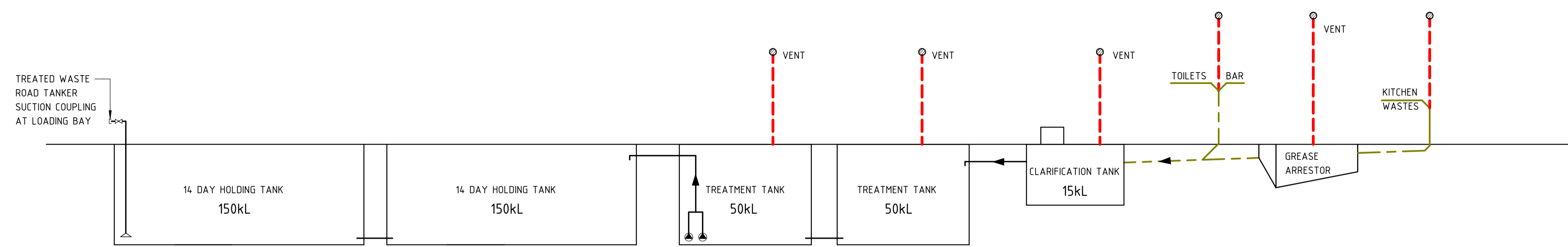
sparksandpartners.com.au  
Level 1, 91 George Street | Parramatta | NSW 2150  
P 02 9891 5033 | E admin@sparksandpartners.com.au

FPA AUSTRALIA  
CORPORATE MEMBER

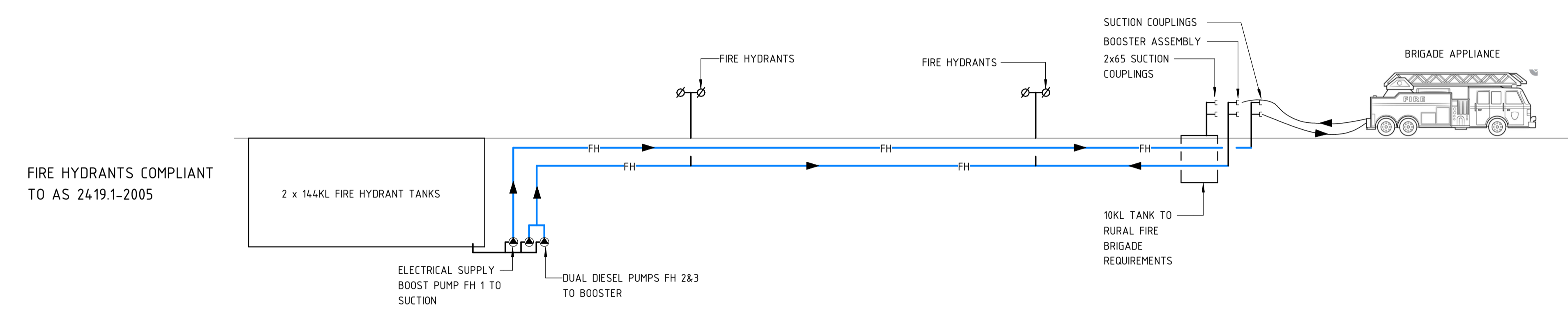
QUALITY SYSTEM CERTIFICATION  
DNV-GL  
ISO 9001

HCAA

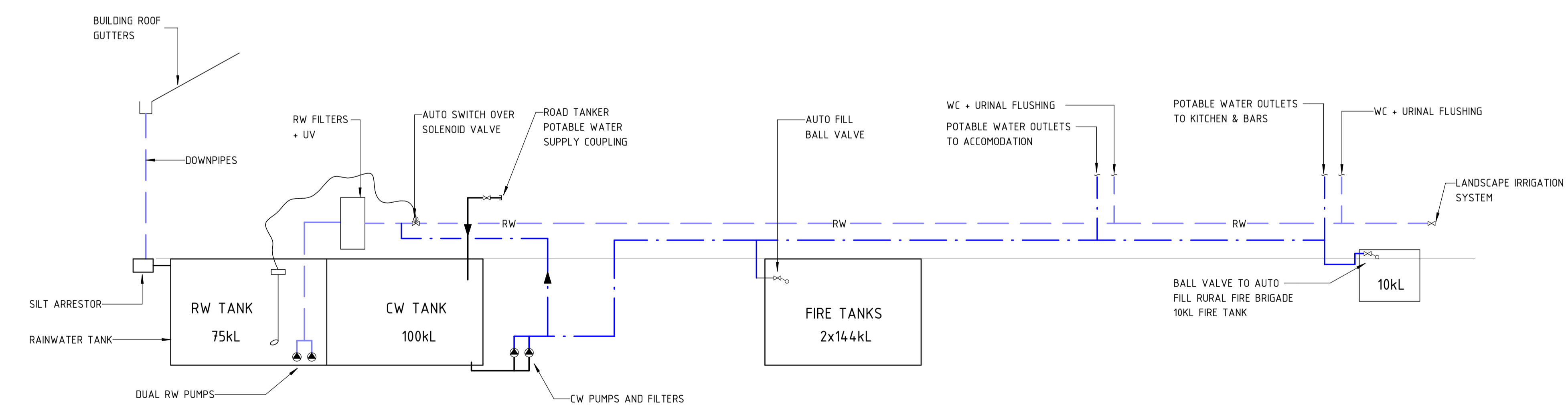
DRAWING TITLE		HYDRAULIC SERVICES GRAVITY SERVICES PLAN - LOWER GROUND				
DATE	DRAWN	QH	DESIGNED	GS	CHECKED	LD
MAR 2021	SCALE	1 : 200	SIZE	A1	REVISION	
PROJECT No	21078	DRAWING No	H2102			C



**WASTE TREATMENT DIAGRAM**  
NOT TO SCALE



**FIRE HYDRANT SERVICE DIAGRAM**  
NOT TO SCALE



**WATER SERVICES DIAGRAM**  
NOT TO SCALE

**DA ISSUE**

IMPORTANT DO NOT SCALE OFF THIS DRAWING. USE DIMENSIONS & ARCHITECTURAL DRAWINGS ONLY. DRAWINGS TO BE READ IN CONJUNCTION WITH SPECIFICATION. THE INFORMATION ON THIS DRAWING REMAINS THE PROPERTY OF SPARKS + PARTNERS CONSULTING ENGINEERS. REPRODUCTION OF THE WHOLE OR PART OF THIS DOCUMENT CONSTITUTES AN INFRINGEMENT OF COPYRIGHT.	NORTH POINT	
	[North Arrow]	

DATE	AMENDMENT	INIT	REV	DATE	AMENDMENT	INIT	REV
24.03.21	PRELIMINARY ISSUE	VG	P1				
07.12.21	PRELIMINARY DA ISSUE	CA	P2				
13.12.21	DA ISSUE	KZ	A				
24.01.22	DA ISSUE	CA	B				
30.10.24	DA ISSUE AMENDED	AB	C				

STRUCTURAL	
MECHANICAL	
ELECTRICAL	
CIVIL	

CLIENT	BALMA PROJECTS PTY LTD
BUILDER	

PROJECT	PROPOSED HOTEL & ACCOMODATION 27 DOUGLAS ROAD, KURRAJONG HEIGHTS
ARCHITECT	<b>ARCHEBIOSIS</b> ARCHITECTS

**SPARKS+PARTNERS**  
CONSULTING ENGINEERS  
HYDRAULIC | CIVIL | FIRE

sparksandpartners.com.au  
Level 1, 91 George Street | Parramatta | NSW 2150  
P 02 9891 5033 | E admin@sparksandpartners.com.au

FPA AUSTRALIA  
CORPORATE MEMBER

DNV-GL  
QUALITY SYSTEM CERTIFICATION  
ISO 9001

HCAA

DRAWING TITLE		HYDRAULIC SERVICES SCHEMATIC DETAIL			
DATE	DRAWN	DESIGNED	CHECKED	LD	
MAR 2021	QH	GS			
PROJECT No	SCALE	SIZE	REVISION		
21078	AS SHOWN	A1			
DRAWING No	H2801				



