

Topographic Features

322 Grose Vale Road, Grose Vale, NSW 2754

Tanks (Areas)

What are the Tank Areas located within the dataset buffer?

Note. The large majority of tank features provided by LPI are derived from aerial imagery & are therefore primarily above ground tanks.

Map Id	Tank Type	Status	Name	Feature Currency	Distance	Direction
N/A	No records in buffer					

Tanks (Points)

What are the Tank Points located within the dataset buffer?

Note. The large majority of tank features provided by LPI are derived from aerial imagery & are therefore primarily above ground tanks.

Map Id	Tank Type	Status	Name	Feature Currency	Distance	Direction
N/A	No records in buffer					

Tanks Data Source: © Land and Property Information (2015)

Creative Commons 3.0 © Commonwealth of Australia <http://creativecommons.org/licenses/by/3.0/au/deed.en>

Major Easements

What Major Easements exist within the dataset buffer?

Note. Easements provided by LPI are not at the detail of local governments. They are limited to major easements such as Right of Carriageway, Electrical Lines (66kVa etc.), Easement to drain water & Significant subterranean pipelines (gas, water etc.).

Map Id	Easement Class	Easement Type	Easement Width	Distance	Direction
120119347	Primary	Undefined		0m	On-site
120115445	Primary	Undefined		181m	North East
163391923	Primary	Right of way		518m	South West
120116335	Primary	Undefined		887m	West
120115346	Primary	Undefined		949m	North West

Easements Data Source: © Land and Property Information (2015)

Creative Commons 3.0 © Commonwealth of Australia <http://creativecommons.org/licenses/by/3.0/au/deed.en>

Topographic Features

322 Grose Vale Road, Grose Vale, NSW 2754

State Forest

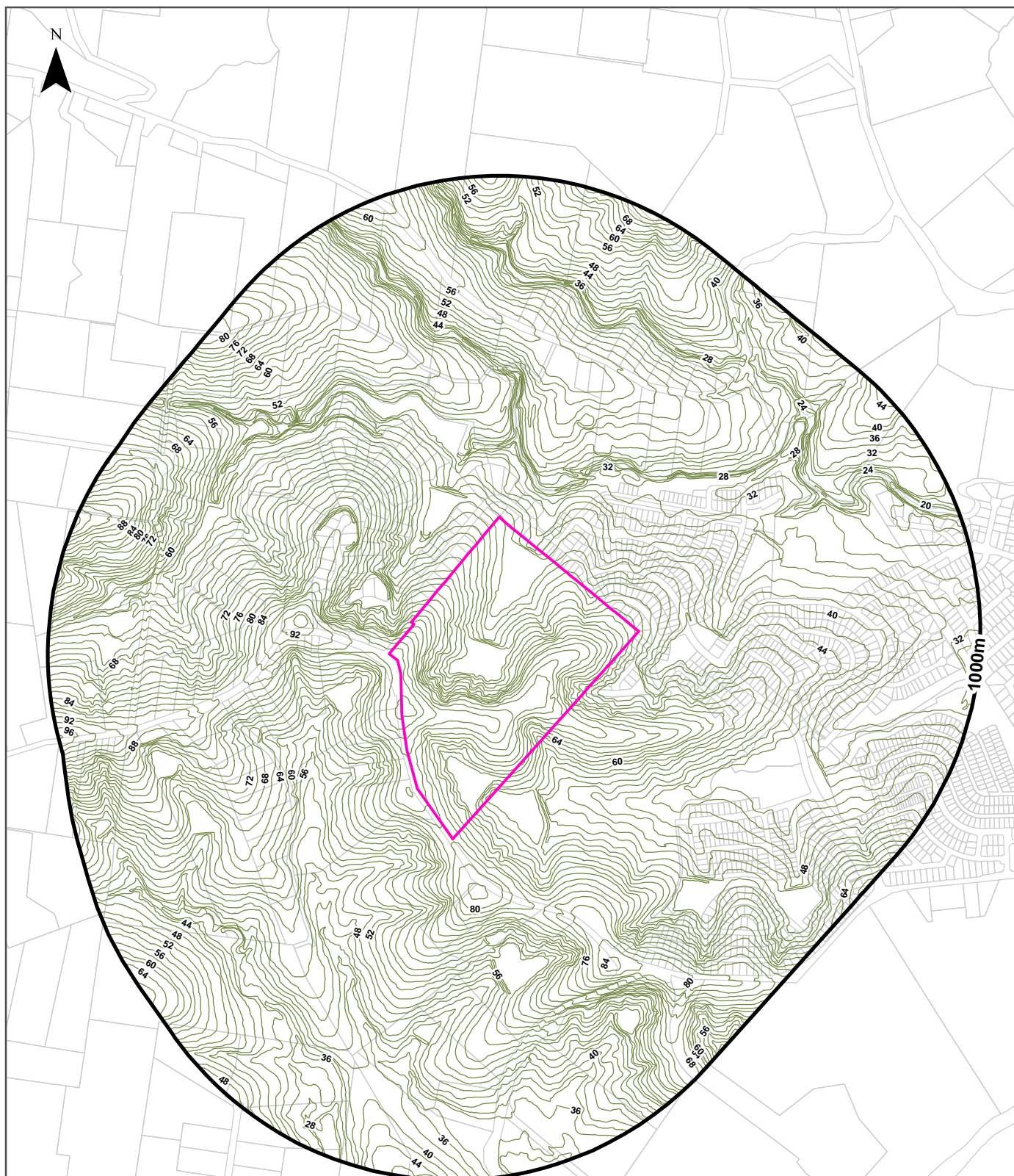
What State Forest exist within the dataset buffer?

State Forest Number	State Forest Name	Distance	Direction
N/A	No records in buffer		

State Forest Data Source: © NSW Department of Finance, Services & Innovation (2018)
Creative Commons 3.0 © Commonwealth of Australia <http://creativecommons.org/licenses/by/3.0/au/deed.en>

Elevation Contours (m AHD)

322 Grose Vale Road, Grose Vale, NSW 2754



Legend

- Elevation Contour (m AHD)
- Site Boundary
- Buffer 1000m
- Property Boundary

Accuracy & Currency: This contour data can be up to 0.4 of the contour interval out in height and must therefore not be used for any design or engineering works, but only as a general guide to topography. Gaps may occur along contour lines due to vertical topography, obscured topography in the source photography such as buildings, dense vegetation or dead ground, or the fact that original buildings have been replaced in the intervening thirty years since the original contour capture.

Scale:

0 100 200 400
Meters

Data Sources: Property Boundaries & Topographic Data:
© Department Finance, Services & Innovation 2024

Coordinate System:
GDA 1994 MGA Zone 56

Date: 22 April 2024

Hydrogeology & Groundwater

322 Grose Vale Road, Grose Vale, NSW 2754

Hydrogeology

Description of aquifers within the dataset buffer:

Description	Distance	Direction
Porous, extensive aquifers of low to moderate productivity	0m	On-site

Hydrogeology Map of Australia : Commonwealth of Australia (Geoscience Australia)
Creative Commons 3.0 © Commonwealth of Australia <http://creativecommons.org/licenses/by/3.0/au/deed.en>

Temporary Water Restriction (Botany Sands Groundwater Source) Order 2018

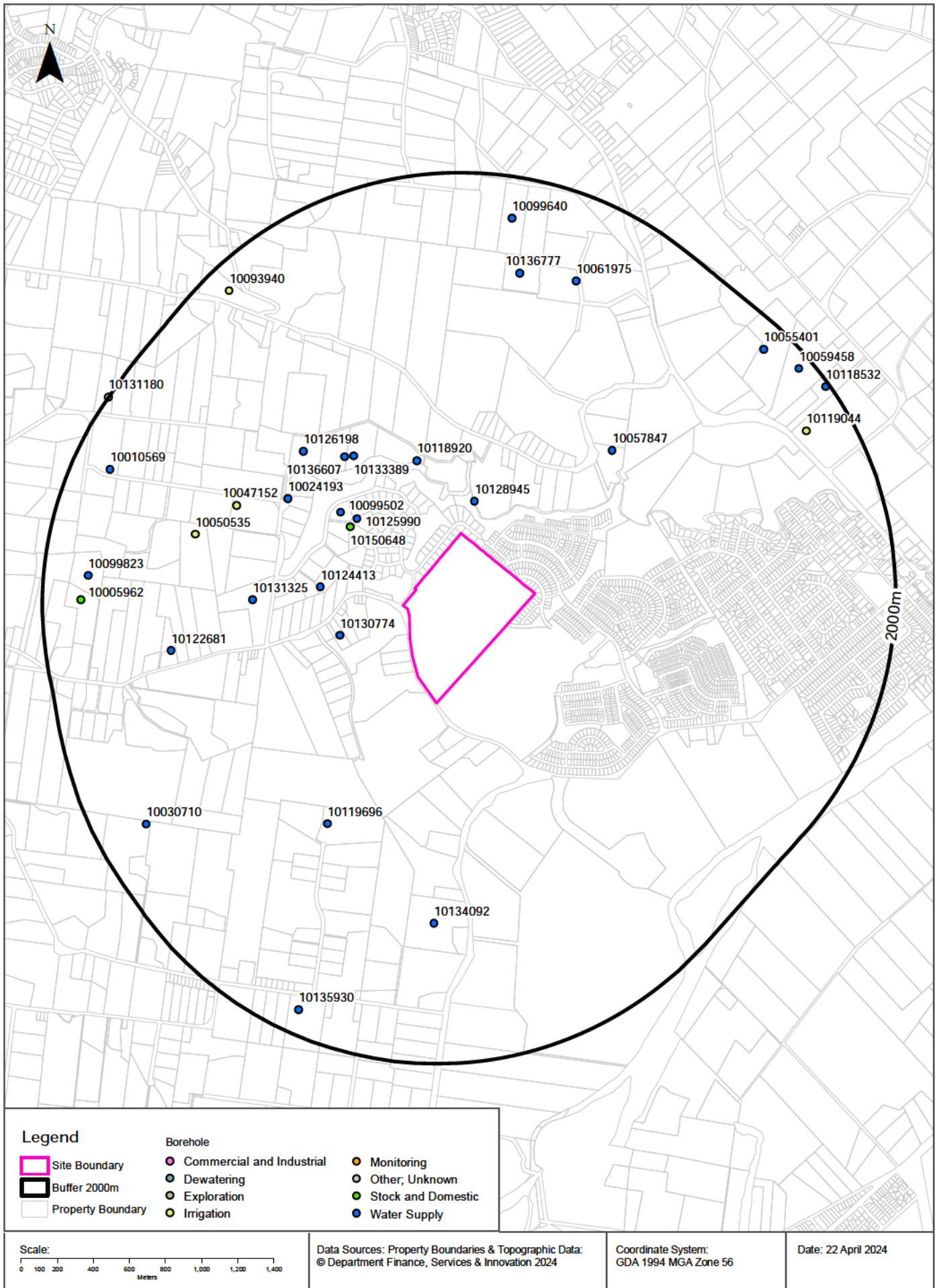
Temporary water restrictions relating to the Botany Sands aquifer within the dataset buffer:

Prohibition Area No.	Prohibition	Distance	Direction
N/A	No records in buffer		

Temporary Water Restriction (Botany Sands Groundwater Source) Order 2018 Data Source : NSW Department of Primary Industries

Groundwater Boreholes

322 Grose Vale Road, Grose Vale, NSW 2754



Hydrogeology & Groundwater

322 Grose Vale Road, Grose Vale, NSW 2754

Groundwater Boreholes

Boreholes within the dataset buffer:

NGIS Bore ID	NSW Bore ID	Bore Type	Status	Drill Date	Bore Depth (m)	Reference Elevation	Height Datum	Salinity (mg/L)	Yield (L/s)	SWL (mbgl)	Distance	Direction
10128945	GW103825	Water Supply	Unknown	02/06/1995	44.00		AHD	Good			194m	North
10130774	GW100128	Water Supply	Unknown	12/10/1991	46.00		AHD	Fair			386m	West
10118920	GW104462	Water Supply	Functioning	14/09/1991	67.00		AHD	Good	2.200	24.00	468m	North
10124413	GW108130	Water Supply	Functioning	01/07/2006	126.00		AHD		3.600	60.00	468m	West
10125990	GW111945	Water Supply	Functioning	29/10/2012	94.00		AHD	650	6.000	14.00	491m	North West
10150648	GW116262	Stock and Domestic	Functioning	31/05/2019	132.00		AHD				492m	North West
10099502	GW107596	Water Supply	Functioning	26/10/2005	78.30		AHD	696	10.000	24.80	583m	North West
10133389	GW104471	Water Supply	Functioning	30/10/2002	48.00		AHD	653	1.000	23.00	729m	North West
10136607	GW104478	Water Supply	Functioning	30/10/2002	90.50		AHD	255	4.200	34.00	765m	North West
10131325	GW071209	Water Supply	Unknown	23/04/1991	120.00	69.00	AHD	580			833m	West
10024193	GW101185	Water Supply	Functioning	22/10/1997	104.00		AHD	Good	0.850	47.00	861m	North West
10057847	GW106930	Water Supply	Functioning	01/02/2005	126.00		AHD	300	6.500	16.00	887m	North East
10119696	GW108126	Water Supply	Functioning	01/08/2006	72.00		AHD		3.500	18.00	902m	South West
10126198	GW104477	Water Supply	Functioning	29/10/2002	102.00		AHD	168	1.600	33.00	961m	North West
10047152	GW047153	Irrigation	Unknown	01/12/1977	88.00		AHD				1075m	North West
10050535	GW047819	Irrigation	Unknown	01/11/1980	106.00		AHD	Poor			1216m	West
10134092	GW072628	Water Supply	Unknown	16/11/1994	28.10		AHD				1221m	South
10122681	GW108131	Water Supply	Functioning	01/07/2006	120.00		AHD		2.900		1309m	West
10136777	GW101552	Water Supply	Unknown	14/10/1997	73.00		AHD	1500	1.200	32.00	1477m	North
10061975	GW101195	Water Supply	Functioning	22/01/1998	108.00		AHD	655	2.000	14.50	1536m	North
10030710	GW109949	Water Supply	Unknown	23/01/2009	126.00		AHD	670	0.400	31.00	1712m	South West
10099823	GW110891	Water Supply	Unknown	22/03/2010	210.00		AHD	300	3.400	70.00	1752m	West
10119044	GW105626	Irrigation	Unknown	20/08/2003	108.00		AHD				1754m	North East
10099640	GW108100	Water Supply	Functioning	07/10/2004	162.00		AHD		2.750	96.00	1769m	North
10005962	GW116163	Stock and Domestic	Unknown	25/01/2019	156.00		AHD				1785m	West
10010569	GW053210	Water Supply	Functioning	01/03/1982	61.00		AHD	0-500 ppm			1789m	West
10055401	GW102491	Water Supply	Unknown	01/06/1995	38.10		AHD	340			1856m	North East
10093940	GW103028	Irrigation	Unknown	13/05/1999	55.00		AHD	400			1858m	North West
10135930	GW100879	Water Supply	Functioning	13/07/1995	91.50		AHD	1100	1.600	63.00	1864m	South
10059458	GW100057	Water Supply	Functioning	26/05/1995	35.10		AHD	280	0.500	7.00	1924m	North East

NGIS Bore ID	NSW Bore ID	Bore Type	Status	Drill Date	Bore Depth (m)	Reference Elevation	Height Datum	Salinity (mg/L)	Yield (L/s)	SWL (mbgl)	Distance	Direction
10118532	GW106346	Water Supply	Functioning	06/09/2004	120.00		AHD	210	9.800	11.00	1979m	North East
10131180	GW042826	Irrigation	Unknown	01/07/1976	66.90		AHD	0-500 ppm			1998m	North West

Borehole Data Source: Bureau of Meteorology; Water NSW. Creative Commons 3.0 © Commonwealth of Australia <http://creativecommons.org/licenses/by/3.0/au/deed.en>

Hydrogeology & Groundwater

322 Grose Vale Road, Grose Vale, NSW 2754

Driller's Logs

Drill log data relevant to the boreholes within the dataset buffer:

NGIS Bore ID	Drillers Log	Distance	Direction
10128945	0.00m-0.60m DIRT/CLAY 0.60m-4.50m SOFT SANDSTONE 4.50m-44.00m SANDSTONE	194m	North
10130774	0.00m-0.30m SOIL 0.30m-27.00m SHALE 27.00m-30.00m SOFT SANDSTONE & SHALE 30.00m-36.40m SHALE 36.40m-42.40m SANDSTONE 42.40m-44.00m SHALE 44.00m-48.80m SHALE & SANDSTONE	386m	West
10118920	0.00m-1.30m SOIL/CLAY 1.30m-4.00m SANDSTONE 4.00m-63.00m SANDSTONE 63.00m-64.00m SHALE 64.00m-67.00m SANDSTONE	468m	North
10124413	0.00m-36.00m shale 36.00m-72.00m sandstone, 72.00m-75.00m mudstone 75.00m-85.00m sandstone, 85.00m-100.00m sandstone, shale 100.00m-108.00m sandstone, 108.00m-126.00m sandstone, quartz	468m	West
10125990	0.00m-5.00m CLAY BROWN SHALE 5.00m-12.00m SHALE 12.00m-82.00m SANDSTONE / SHALE 82.00m-94.00m SANDSTONE / QUARTZ	491m	North West
10099502	0.00m-1.30m clay, brown 1.30m-2.70m sandstone, brown 2.70m-3.70m clay, brown white 3.70m-10.70m sandstone, brown 10.70m-10.80m clay, brown 10.80m-14.50m sandstone, brown 14.50m-14.60m clay, brown 14.60m-22.50m sandstone, grey brown 22.50m-22.70m clay, brown 22.70m-23.80m sandstone, brown 23.80m-24.50m shale, grey 24.50m-25.10m sandstone, grey 25.10m-26.30m shale, grey 26.30m-32.30m sandstone, grey 32.30m-32.40m shale, grey 32.40m-39.80m sandstone, grey 39.80m-42.30m shale, grey brown soft 42.30m-47.30m sandstone, grey 47.30m-47.60m shale, grey 47.60m-57.70m sandstone, grey 57.70m-58.10m sandstone, brown, and quartz, water bearing 58.10m-58.60m sandstone, grey 58.60m-59.60m shale, grey soft 59.60m-71.90m sandstone, grey 71.90m-72.30m sandstone, grey & black jointing, water bearing 72.30m-76.60m sandstone, grey 76.60m-76.90m sandstone, grey, fractured, water bearing 76.90m-78.30m sandstone, grey	583m	North West
10133389	0.00m-1.00m BROWN SHALE 1.00m-27.00m SANDSTONE L/B SOFT 27.00m-44.00m SANDSTONE GREY 44.00m-45.00m SANDSTONE VERY FRACTURED/BIG 45.00m-45.50m SANDSTONE GREY 45.50m-45.80m SANDSTONE FRACTURED 45.80m-48.00m SANDSTONE GREY	729m	North West

NGIS Bore ID	Drillers Log	Distance	Direction
10136607	0.00m-9.00m SHALE 9.00m-34.00m SANDSTONE L/B 34.00m-34.50m SHALE SOFT 34.50m-56.00m SANDSTONE GREY 56.00m-56.50m SANDSTONE FINE QUARTZ 56.50m-65.00m SANDSTONE GREY 65.00m-65.50m SILTSTONE QUARTZ 65.50m-66.00m SHALE 66.00m-68.00m SANDSTONE GREY 68.00m-70.00m SHALE 70.00m-74.00m SANDSTONE GREY 74.00m-75.50m SANDSTONE /W/ FRACTURED 75.50m-81.50m SANDSTONE GREY 81.50m-82.00m SANDSTONE VERY FRACTURED 82.00m-86.00m SANDSTONE 86.00m-86.50m SANDSTONE FRACTURED 86.50m-90.50m SANDSTONE GREY	765m	North West
10131325	0.00m-0.30m soil 0.30m-1.50m Brown Soft Shale 1.50m-3.60m Brown Firm Shale 3.60m-39.40m Blue Shale 39.40m-48.50m sandstone 48.50m-72.70m shale 72.70m-78.80m sandstone 78.80m-103.00m shale 103.00m-122.00m sandstone	833m	West
10024193	0.00m-0.50m soil 0.50m-1.50m clay 1.50m-5.50m shale 5.50m-40.00m shale/sandstone 40.00m-47.00m sandstone 47.00m-52.00m shale 52.00m-104.00m sandstone	861m	North West
10057847	0.00m-2.50m Sand 2.50m-22.00m Sandstone 22.00m-28.00m Shale 28.00m-52.00m Sandstone 52.00m-56.00m Shale 56.00m-95.00m Sandstone/Shale 95.00m-126.00m Sandstone/Quartzite	887m	North East
10119696	0.00m-28.00m sandstone, broken 28.00m-60.00m sandstone, 60.00m-72.00m sandstone, shale	902m	South West
10126198	0.00m-1.00m CLAY 1.00m-7.00m SHALE BROWN 7.00m-27.50m SANDSTONE L/B SOFT 27.50m-31.50m SHALE GREY 31.50m-51.00m SANDSTONE GREY 51.00m-54.00m SANDSTONE WHITE FRACTURED 54.00m-65.50m SANDSTONE L. GREY 65.50m-66.00m SILTSTONE VERY FRACTURED 66.00m-68.00m SHALE 68.00m-70.00m SANDSTONE / FRACTURED 70.00m-81.00m SANDSTONE GREY 81.00m-81.50m SANDSTONE FRACTURED 81.50m-92.00m SANDSTONE GREY 92.00m-93.50m SANDSTONE FRACTURED/QUARTZ 93.50m-102.00m SANDSTONE GREY	961m	North West
10047152	0.00m-10.00m Shale Water Supply 10.00m-11.00m Sandstone Shaley 11.00m-15.00m Sand Grey 15.00m-29.00m Sand 29.00m-33.00m Sand Silty 33.00m-34.00m Sand 34.00m-43.00m Sand 43.00m-58.00m Sand Silty 58.00m-70.00m Sand Shaley Silty 70.00m-75.00m Sand Shale 70.00m-75.00m Clay 75.00m-78.00m Sand Silty 78.00m-88.00m Sand Some Silt	1075m	North West
10050535	0.00m-2.00m Clay 2.00m-5.00m Shale Grey 5.00m-16.00m Shale Black 16.00m-29.00m Sandstone 29.00m-31.00m Sand 31.00m-60.00m Sand Silty Water Supply 60.00m-71.00m Sand Very Silty Water Supply 71.00m-75.00m Sand Shaley Water Supply 75.00m-87.00m Sand Silty Water Supply 87.00m-89.00m Sand Silty Shaley Water Supply 89.00m-106.00m Sand Very Silty Clay Bands Water Supply	1216m	West

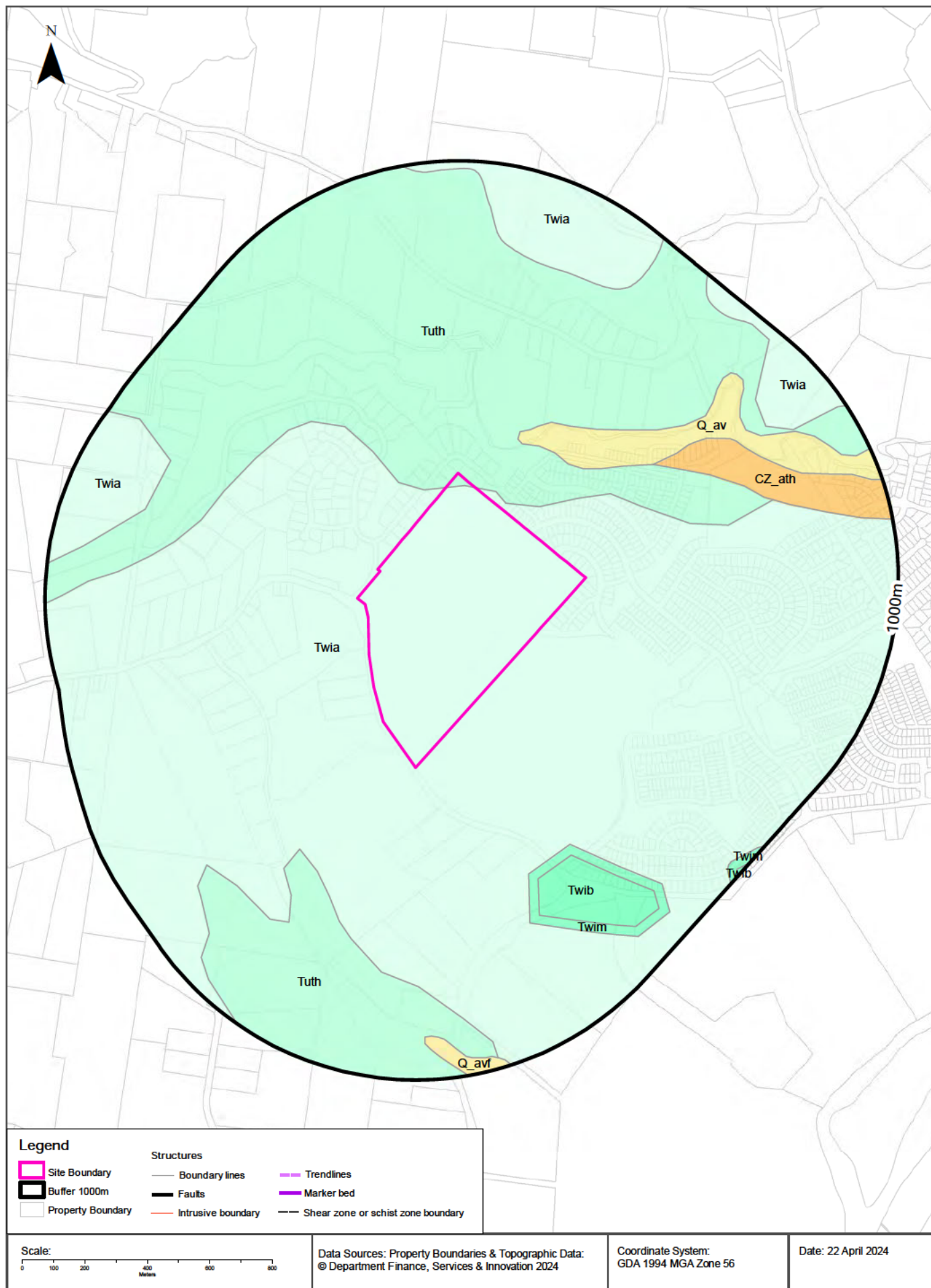
NGIS Bore ID	Drillers Log	Distance	Direction
10134092	0.00m-2.00m CLAY 2.00m-28.10m SANDSTONE	1221m	South
10122681	0.00m-24.00m sandstone, soft 24.00m-66.00m sandstone, 66.00m-96.00m sandstone, shale 96.00m-120.00m sandstone,	1309m	West
10136777	0.00m-0.60m Soil 0.60m-5.00m Soil/Clay 5.00m-18.00m Shale 18.00m-68.00m Sandstone 68.00m-73.00m Soft Sandstone	1477m	North
10061975	0.00m-1.50m clay overburden 1.50m-18.50m sandstone fine grained red 18.50m-19.00m quartz medium grained 19.00m-34.50m sandstone medium grained light grey 34.50m-36.00m sandstone coarse grained grey 36.00m-39.50m quartz (water bearing) 39.50m-45.00m sandstone finegrained dark grey 45.00m-52.00m sandstone medium grain and quartz 52.00m-69.50m sandstone coarse grained brown 69.50m-72.50m sandstone medium grained quartz (water bearing) 72.50m-96.00m sandstone medium grained dark grey 96.00m-97.50m quartz layer (water bearing) 97.50m-108.00m sandstone medium grain white	1536m	North
10030710	0.00m-2.00m CLAY 2.00m-29.00m SANDSTONE YELLOW 29.00m-31.00m SANDSTONE BROWN 31.00m-49.00m SANDSTONE GREY 49.00m-52.00m SANDSTONE QUARTZ 52.00m-57.00m SANDSTONE GREY 57.00m-60.00m SANDSTONE QUARTZ 60.00m-64.00m SANDSTONE GREY 64.00m-71.00m SANDSTONE QUARTZ 71.00m-75.00m SANDSTONE SILTSTONE BANDS 75.00m-79.00m SANDSTONE GREY 79.00m-84.00m SANDSTONE QUARTZ 84.00m-85.50m SILTSTONE 85.50m-87.00m SANDSTONE QUARTZ 87.00m-91.00m SANDSTONE GREY 91.00m-94.00m SANDSTONE QUARTZ 94.00m-104.00m SANDSTONE GREY 104.00m-104.30m CLAY 104.30m-105.00m SANDSTONE GREY 105.00m-108.00m SANDSTONE QUARTZ 108.00m-112.00m SANDSTONE GREY 112.00m-113.50m SANDSTONE QUARTZ 113.50m-118.00m SANDSTONE GREY 118.00m-124.00m SANDSTONE QUARTZ 124.00m-126.00m SANDSTONE GREY	1712m	South West
10099823	0.00m-45.00m SHALE 45.00m-66.00m SANDSTONE 66.00m-90.00m SANDSTONE/ SHALE 90.00m-140.00m SANDSTONE 140.00m-150.00m SHALE 150.00m-165.00m SANDSTONE 165.00m-170.00m SHALE 170.00m-184.00m SANDSTONE/QUARTZ 184.00m-186.00m SHALE 186.00m-210.00m SANDSTONE/QUARTZ	1752m	West
10119044	0.00m-0.30m TOPSOIL 0.30m-3.70m CLAY BROWN 3.70m-16.10m SHALE 16.10m-52.30m SANDSTONE MG GREY LT 52.30m-53.00m SANDSTONE CG GREY LT WB 53.00m-104.10m SANDSTONE MG GREY LT 104.10m-104.90m SANDSTONE CG GREY LT WB 104.90m-108.00m SANDSTONE MG GREY DK	1754m	North East
10099640	0.00m-2.00m clay, brown shale 2.00m-33.00m shale 33.00m-42.00m sandstone, yellow 42.00m-43.00m shale 43.00m-112.00m sandstone, shale seams 112.00m-114.00m shale 114.00m-118.00m sandstone, shale seams 118.00m-121.00m sandstone, quartzite 121.00m-138.00m sandstone, shale 138.00m-141.00m shale 141.00m-162.00m sandstone	1769m	North

NGIS Bore ID	Drillers Log	Distance	Direction
10010569	0.00m-1.00m Topsoil 1.00m-4.00m Shale 4.00m-21.00m Sandstone 21.00m-35.00m Sand Silty Water Bearing 35.00m-44.00m Sand Shaley 44.00m-46.00m Sand Water Bearing 46.00m-49.00m Sand Shaley 49.00m-51.00m Clayshale Sandy 51.00m-53.00m Sand Silty 53.00m-56.00m Sand Water Bearing 56.00m-61.00m Sand Silty	1789m	West
10055401	0.00m-0.60m TOP SOIL 0.60m-6.60m SANDSTONE LOOSE WEATHERED 6.60m-10.80m SANDSTONE SOFT 10.80m-38.10m SANDSTONE MEDIUM	1856m	North East
10093940	0.00m-0.40m SOIL 0.40m-0.80m CLAY 0.80m-1.80m SANDSTONE SOFT 1.80m-4.80m SANDSTONE 4.80m-6.90m SHALE BROWN 6.90m-9.10m SANDSTONE SOFT 9.10m-43.00m SANDSTONE 43.00m-44.00m SHALE 44.00m-55.00m SANDSTONE	1858m	North West
10135930	0.00m-3.00m CLAY/DIRT 3.00m-21.50m SANDSTONE 21.50m-23.00m SHALE 23.00m-66.60m SANDSTONE 66.60m-78.80m SHALE 78.80m-91.50m SANDSTONE	1864m	South
10059458	0.00m-0.60m TOP SOIL 0.60m-10.40m MEDIUM SANDSTONE 10.40m-35.10m HARD SANDSTONE	1924m	North East
10118532	0.00m-5.00m clay 5.00m-42.00m sandstone, broken 42.00m-60.00m shale 60.00m-120.00m sandstone, shale bands	1979m	North East
10131180	0.00m-9.75m Sandstone 9.75m-13.10m Sand Shaley 13.10m-13.70m Sand Water Supply 13.70m-25.00m Sand Silty 25.00m-26.50m Sand Water Supply 26.50m-32.60m Sand Silty 32.60m-39.75m Clay Sand 39.75m-44.30m Sand Shaley 44.30m-51.00m Sand Silty 51.00m-52.25m Sand White Water Supply 52.25m-57.75m Sand Silty 57.75m-64.80m Sand Silty Shaley 64.80m-66.90m Sand Friable Water Supply	1998m	North West

Drill Log Data Source: Bureau of Meteorology; Water NSW. Creative Commons 3.0 © Commonwealth of Australia <http://creativecommons.org/licenses/by/3.0/au/deed.en>

Geology

322 Grose Vale Road, Grose Vale, NSW 2754



Geology

322 Grose Vale Road, Grose Vale, NSW 2754

Geological Units

What are the Geological Units within the dataset buffer?

Unit Code	Unit Name	Description	Unit Stratigraphy	Age	Dominant Lithology	Distance
Twia	Ashfield Shale	Black to light grey shale and laminite.	\Wianamatta Group\ \Ashfield Shale\	Middle Triassic (base) to Middle Triassic (top)	Shale	0m
Tuth	Hawkesbury Sandstone	Medium- to coarse-grained quartz sandstone with minor shale and laminite lenses.	\Ungrouped Triassic units\ \Hawkesbury Sandstone\	Anisian (base) to Anisian (top)	Sandstone	0m
Q_av	Alluvial valley deposits	Silt, clay, (fluvially deposited) lithic to quartz-lithic sand, gravel.	\Alluvium\ \Alluvial valley deposits\	Quaternary (base) to Now (top)	Clastic sediment	203m
CZ_ath	Alluvial terrace deposits - high-stand facies	High-level terrace deposits of sand and gravel.	\Alluvium\ \Alluvial terrace deposits\ \Alluvial terrace deposits - high-stand facies\	Neogene (base) to Now (top)	Sand	417m
Twim	Minchinbury Sandstone	Fine- to medium-grained lithic sandstone.	\Wianamatta Group\ \Minchinbury Sandstone\ \	Middle Triassic (base) to Middle Triassic (top)	Sandstone	497m
Twib	Bringelly Shale	Shale, carbonaceous claystone, laminite, lithic sandstone, rare coal.	\Wianamatta Group\ \Bringelly Shale\	Middle Triassic (base) to Middle Triassic (top)	Shale	530m
Q_avf	Alluvial fan deposits	Fluvially-deposited quartz-lithic sand, silt, gravel, clay.	\Alluvium\ \Alluvial valley deposits\ \Alluvial fan deposits\	Quaternary (base) to Now (top)	Clastic sediment	861m

Linear Geological Structures

What are the Dyke, Sill, Fracture, Lineament and Vein trendlines within the dataset buffer?

Map ID	Feature Description	Map Sheet Name	Distance
No Features			

What are the Faults, Shear zones or Schist zones, Intrusive boundaries & Marker beds within the dataset buffer?

Map ID	Boundary Type	Description	Map Sheet Name	Distance
No Features				

Geological Data Source: Statewide Seamless Geology v2.1, Department of Regional NSW
Creative Commons 4.0 © Commonwealth of Australia <http://creativecommons.org/licenses/by/4.0/au/deed.en>

Naturally Occurring Asbestos Potential

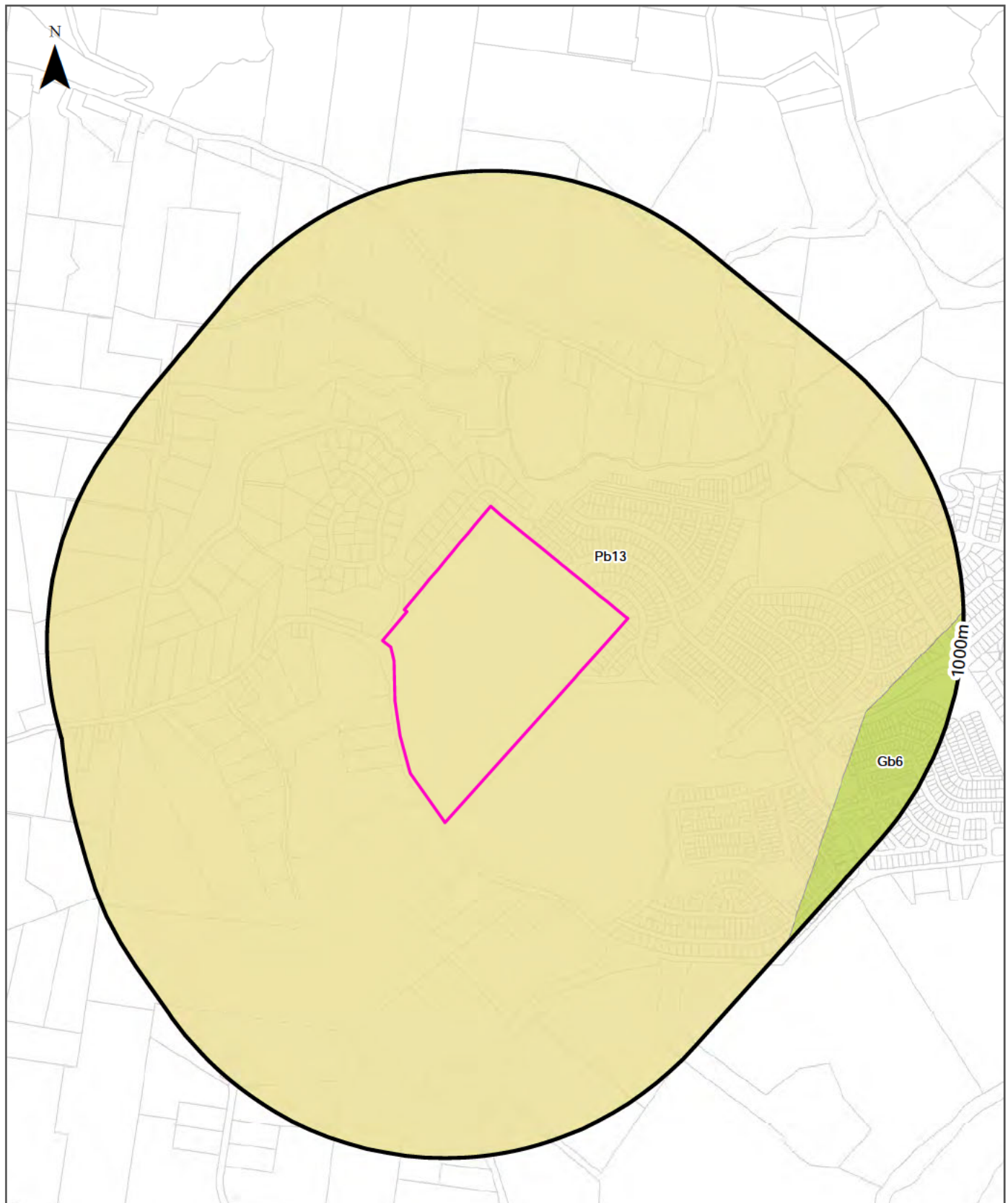
322 Grose Vale Road, Grose Vale, NSW 2754

Naturally Occurring Asbestos Potential

Naturally Occurring Asbestos Potential within the dataset buffer:

Potential	Sym	Strat Name	Group	Formation	Scale	Min Age	Max Age	Rock Type	Dom Lith	Description	Dist	Dir
No records in buffer												

Naturally Occurring Asbestos Potential Data Source: © State of New South Wales through NSW Department of Industry, Resources & Energy



Legend		Australian Soil Classification Orders				
Site Boundary	Anthrosol	Dermosol	Kandosol	Podosol	Tenosol	No Data
Buffer 1000m	Calcarosol	Ferrosol	Kurosol	Rudosol	Vertosol	
Property Boundary	Chromosol	Hydrosol	Organosol	Sodosol	Lake	

Scale: 	Data Sources: Property Boundaries & Topographic Data: © Department Finance, Services & Innovation 2024	Coordinate System: GDA 1994 MGA Zone 56	Date: 22 April 2024
-------------------	---	--	---------------------

Soils

322 Grose Vale Road, Grose Vale, NSW 2754

Atlas of Australian Soils

Soil mapping units and Australian Soil Classification orders within the dataset buffer:

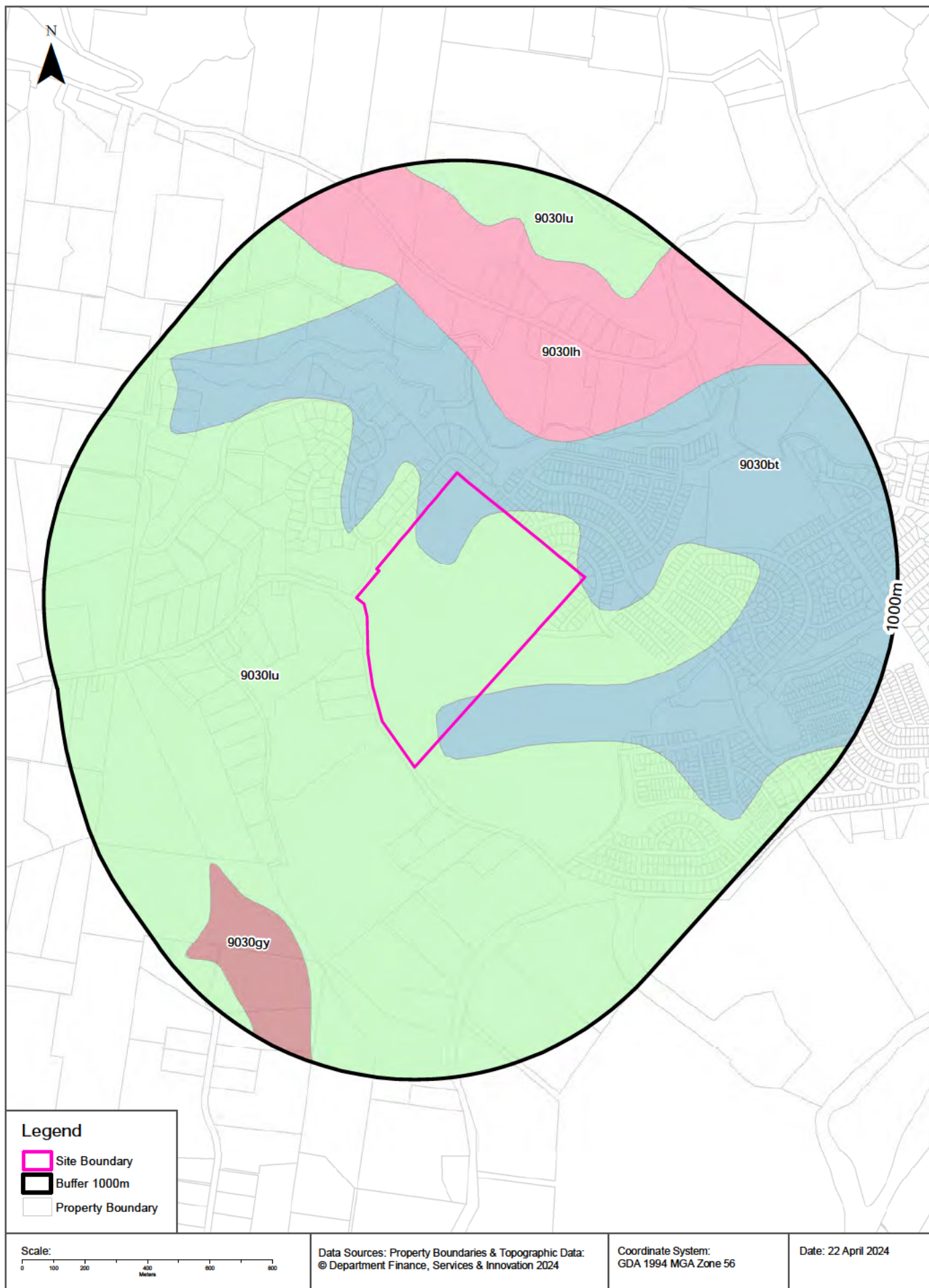
Map Unit Code	Soil Order	Map Unit Description	Distance	Direction
Pb13	Kurosol	Ridge and valley country of gently undulating ridge tops and steep side slopes often with slumping, also rounded hilly to steep hilly areas and relatively narrow valleys: chief soils are hard acidic red soils (Dr2.21) with hard acidic yellow mottled soils (Dy3.41); in places some ironstone gravels occur in both these soils. Associated are hard neutral and alkaline red soils (Dr2.22 and Dr2.23) in saddles and some mid-slope positions; (Dy3.42 and Dy3.43) soils, usually in depressions; and small areas of undescribed soils in wet soaks and valley areas. Small areas of other soils are likely throughout.	0m	On-site
Gb6	Dermosol	Younger river terraces, present flood-plain, and swamps: chief soils are dark friable loamy soils (Um6.11), possibly with some (Gn2.8) soils on the terraces. Associated are various (Um) and (Uc) soils on the flood-plains and swamps. Area is subject to periodic inundation. As mapped, areas of units X9, Mb2, and Sp1 are included.	761m	East

Atlas of Australian Soils Data Source: CSIRO

Creative Commons 4.0 © Commonwealth of Australia <http://creativecommons.org/licenses/by/4.0/au/deed.en>

Soil Landscapes of Central and Eastern NSW

322 Grose Vale Road, Grose Vale, NSW 2754



Soils

322 Grose Vale Road, Grose Vale, NSW 2754

Soil Landscapes of Central and Eastern NSW

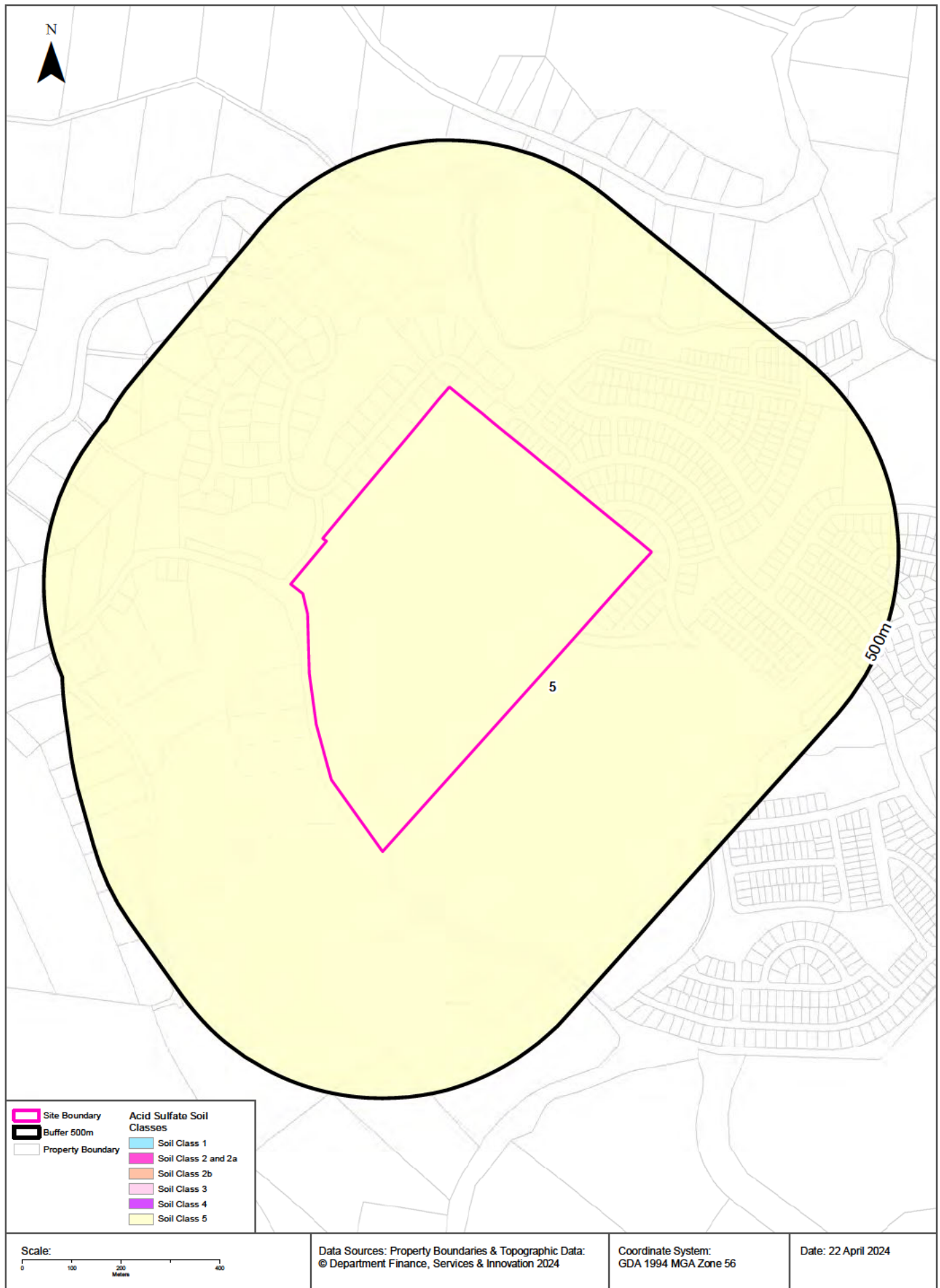
Soil Landscapes of Central and Eastern NSW within the dataset buffer:

Soil Code	Name	Distance	Direction
9030lu	Luddenham	0m	On-site
9030bt	Blacktown	0m	On-site
9030lh	Lucas Heights	240m	North
9030gy	Gynea	641m	South West

Soil Landscapes of Central and Eastern NSW: NSW Department of Planning, Industry and Environment
Creative Commons 4.0 © Commonwealth of Australia <http://creativecommons.org/licenses/by/4.0/au/deed.en>

Acid Sulfate Soils

322 Grose Vale Road, Grose Vale, NSW 2754



Acid Sulfate Soils

322 Grose Vale Road, Grose Vale, NSW 2754

Environmental Planning Instrument - Acid Sulfate Soils

What is the on-site Acid Sulfate Soil Plan Class that presents the largest environmental risk?

Soil Class	Description	EPI Name
5	Works within 500 metres of adjacent Class 1, 2, 3, or 4 land that is below 5 metres AHD and by which the watertable is likely to be lowered below 1 metre AHD on adjacent Class 1, 2, 3 or 4 land, present an environmental risk	Hawkesbury Local Environmental Plan 2012

If the on-site Soil Class is 5, what other soil classes exist within 500m?

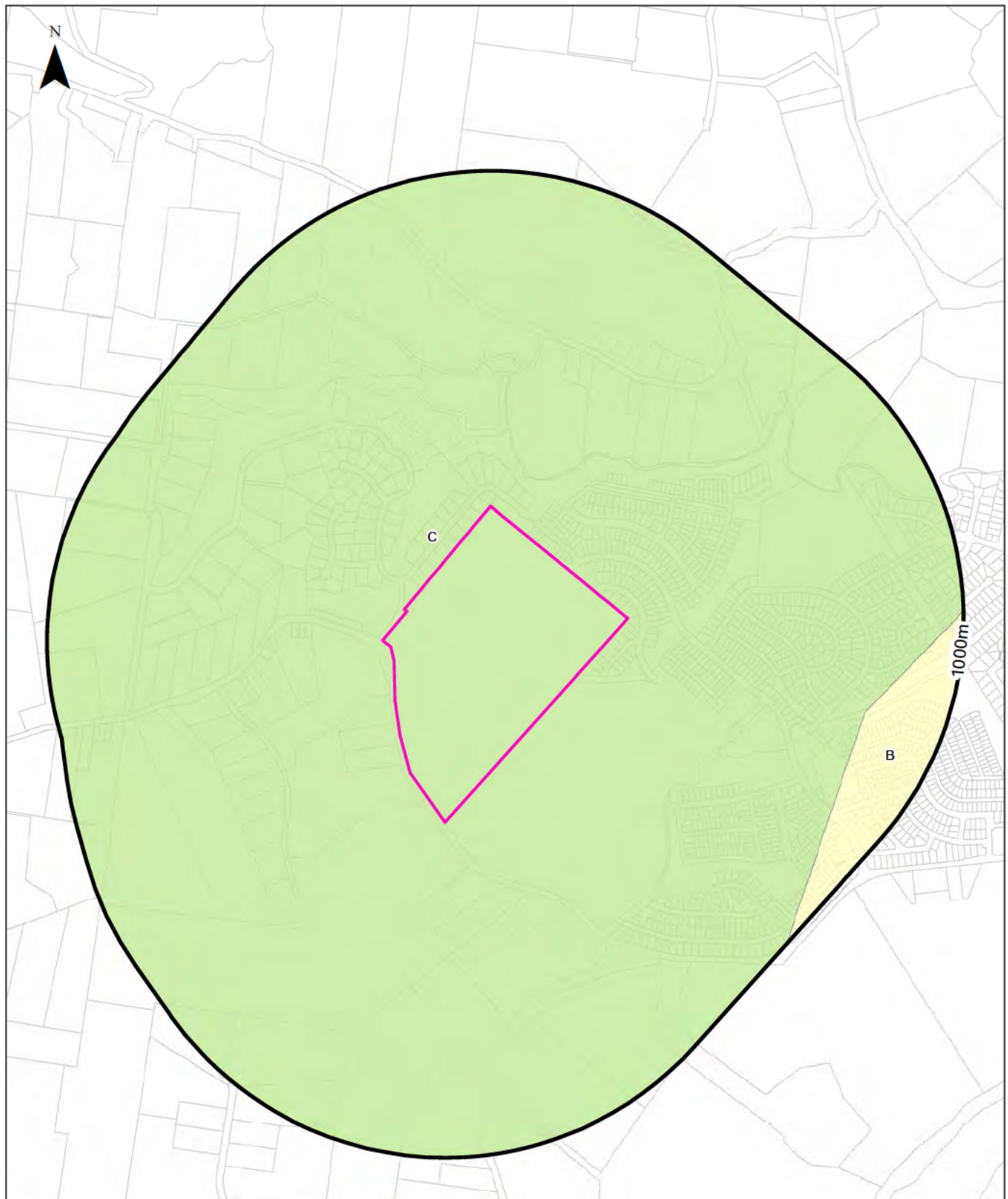
Soil Class	Description	EPI Name	Distance	Direction
None				

NSW Crown Copyright - Planning and Environment

Creative Commons 4.0 © Commonwealth of Australia <https://creativecommons.org/licenses/by/4.0/>

Atlas of Australian Acid Sulfate Soils

322 Grose Vale Road, Grose Vale, NSW 2754



Legend			
Site Boundary	Probability of occurrence of Acid Sulfate Soils		
Buffer 1000m	A. High (>70%)	C. Extremely Low (1-5%)	No Data
Property Boundary	B. Low (6-70%)	D. No Chance (0%)	
Scale: 0 100 200 400 600 800 Meters	Data Sources: Property Boundaries & Topographic Data: © Department Finance, Services & Innovation 2024		Coordinate System: GDA 1994 MGA Zone 56
			Date: 22 April 2024

Acid Sulfate Soils

322 Grose Vale Road, Grose Vale, NSW 2754

Atlas of Australian Acid Sulfate Soils

Atlas of Australian Acid Sulfate Soil categories within the dataset buffer:

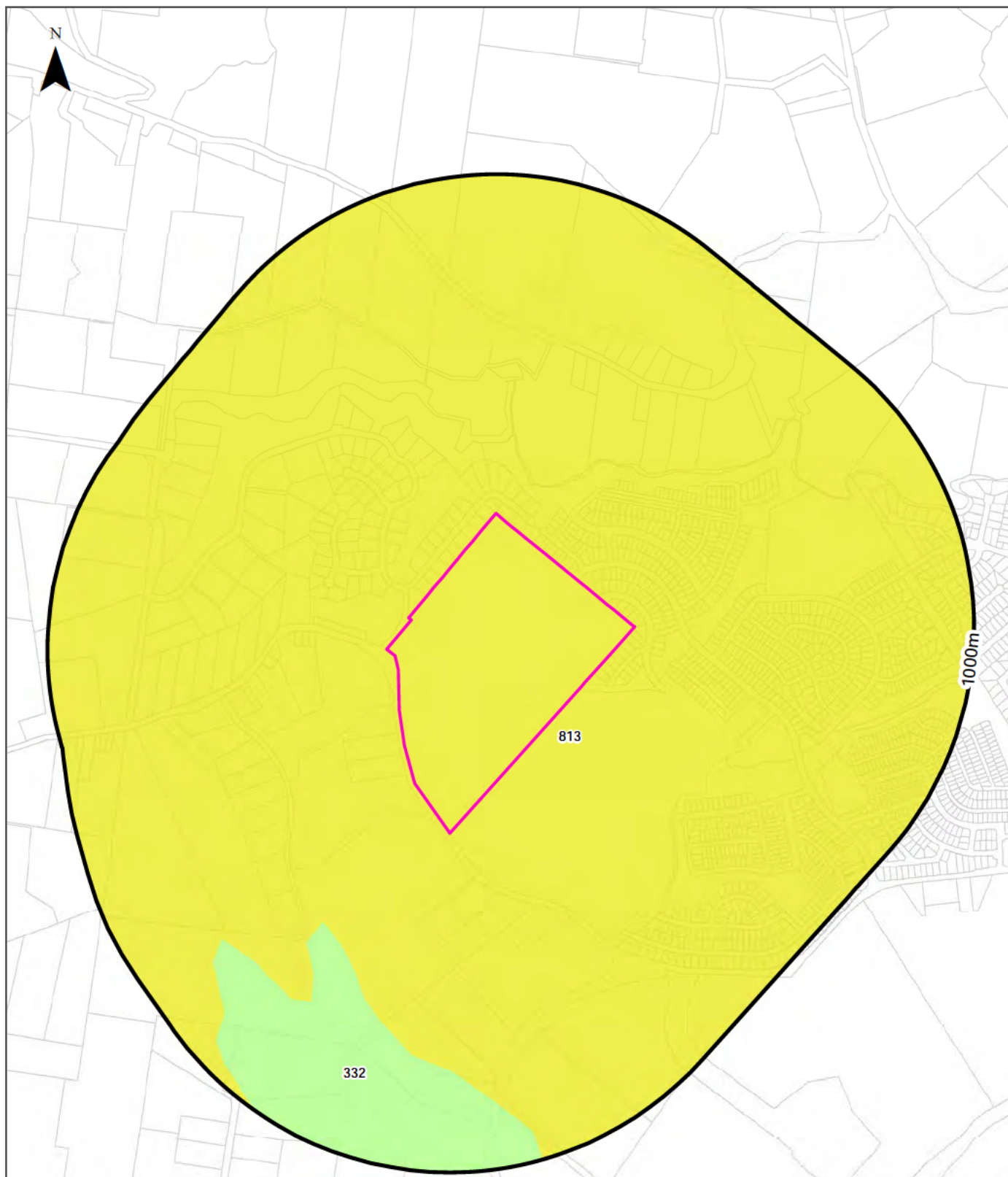
Class	Description	Distance	Direction
C	Extremely low probability of occurrence. 1-5% chance of occurrence with occurrences in small localised areas.	0m	On-site
B	Low Probability of occurrence. 6-70% chance of occurrence.	760m	East

Atlas of Australian Acid Sulfate Soils Data Source: CSIRO

Creative Commons 3.0 © Commonwealth of Australia <http://creativecommons.org/licenses/by/3.0/au/deed.en>

Dryland Salinity

322 Grose Vale Road, Grose Vale, NSW 2754



<p> Site Boundary</p> <p> Buffer 1000m</p> <p> Property Boundary</p>	<p>Dryland Salinity - National Assessment</p> <p> Delineated risk area but no high hazard or risk rating for either 2000, 2020, 2050</p> <p> High hazard or risk in 2050 only</p> <p> High hazard or risk defined for 2050, but no assessment made for 2000 or 2020</p> <p> High hazard or risk in 2020 and 2050</p> <p> High hazard or risk in 2000 and 2050. 2020 not defined as high hazard</p> <p> High hazard or risk defined for all years: 2000, 2020, 2050</p>	<p>Salinity Potential of Western Sydney</p> <p> Area of Known Salinity</p> <p> Area of High Salinity Potential</p> <p> Area of Moderate Salinity Potential</p> <p> Area of Very Low Salinity Potential</p> <p> Area of Water</p>
--	---	---

<p>Scale:</p>	<p>Data Sources: Property Boundaries & Topographic Data: © Department Finance, Services & Innovation 2024</p>	<p>Coordinate System: GDA 1994 MGA Zone 56</p>	<p>Date: 22 April 2024</p>
---------------	---	--	----------------------------

Dryland Salinity

322 Grose Vale Road, Grose Vale, NSW 2754

Dryland Salinity - National Assessment

Is there Dryland Salinity - National Assessment data onsite?

No

Is there Dryland Salinity - National Assessment data within the dataset buffer?

No

What Dryland Salinity assessments are given?

Assessment 2000	Assessment 2020	Assessment 2050	Distance	Direction
N/A	N/A	N/A		

Dryland Salinity Data Source : National Land and Water Resources Audit

The Commonwealth and all suppliers of source data used to derive the maps of "Australia, Forecast Areas Containing Land of High Hazard or Risk of Dryland Salinity from 2000 to 2050" do not warrant the accuracy or completeness of information in this product. Any person using or relying upon such information does so on the basis that the Commonwealth and data suppliers shall bear no responsibility or liability whatsoever for any errors, faults, defects or omissions in the information. Any persons using this information do so at their own risk.

In many cases where a high risk is indicated, less than 100% of the area will have a high hazard or risk.

Dryland Salinity Potential of Western Sydney

Dryland Salinity Potential of Western Sydney within the dataset buffer?

Feature Id	Classification	Description	Distance	Direction
813	MODERATE	Area of Moderate Salinity Potential	0m	On-site
332	LOW	Area of Very Low Salinity Potential	452m	South

Dryland Salinity Potential of Western Sydney Data Source : NSW Office of Environment and Heritage

Creative Commons 3.0 © Commonwealth of Australia <http://creativecommons.org/licenses/by/3.0/au/deed.en>

Mining

322 Grose Vale Road, Grose Vale, NSW 2754

Mining Subsidence Districts

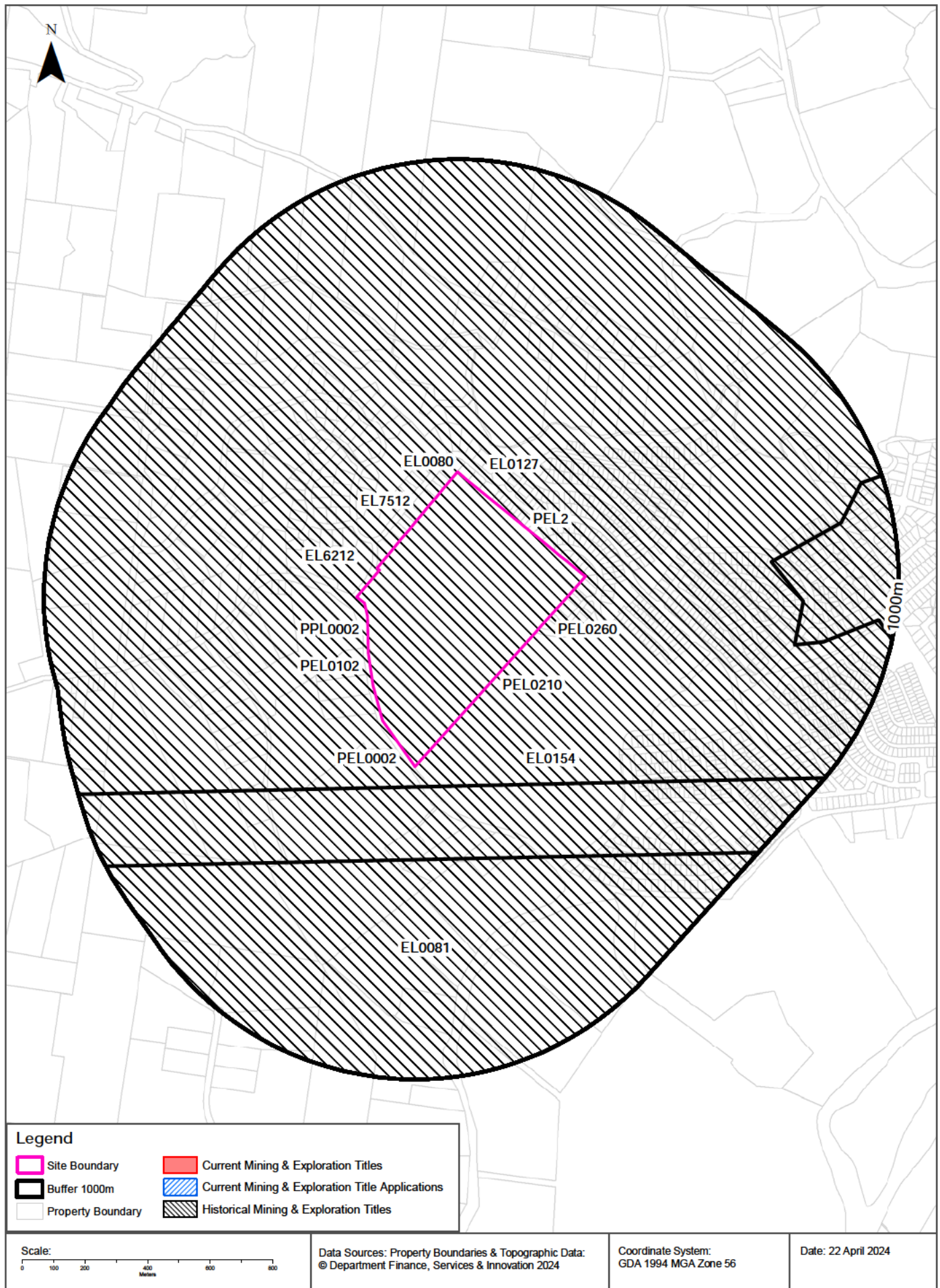
Mining Subsidence Districts within the dataset buffer:

District	Distance	Direction
There are no Mining Subsidence Districts within the report buffer		

Mining Subsidence District Data Source: © Land and Property Information (2016)
Creative Commons 3.0 © Commonwealth of Australia <http://creativecommons.org/licenses/by/3.0/au/deed.en>

Mining & Exploration Titles

322 Grose Vale Road, Grose Vale, NSW 2754



Mining

322 Grose Vale Road, Grose Vale, NSW 2754

Current Mining & Exploration Titles

Current Mining & Exploration Titles within the dataset buffer:

Title Ref	Holder	Grant Date	Expiry Date	Last Renewed	Operation	Resource	Minerals	Dist	Dir
N/A	No records in buffer								

Current Mining & Exploration Titles Data Source: © State of New South Wales through NSW Department of Industry

Current Mining & Exploration Title Applications

Current Mining & Exploration Title Applications within the dataset buffer:

Application Ref	Applicant	Application Date	Operation	Resource	Minerals	Dist	Dir
N/A	No records in buffer						

Current Mining & Exploration Title Applications Data Source: © State of New South Wales through NSW Department of Industry

Mining

322 Grose Vale Road, Grose Vale, NSW 2754

Historical Mining & Exploration Titles

Historical Mining & Exploration Titles within the dataset buffer:

Title Ref	Holder	Start Date	End Date	Resource	Minerals	Dist	Dir
EL7512	GRADIENT ENERGY LIMITED	20100407	20110415	MINERALS	Geothermal	0m	On-site
PEL0210	THE AUSTRALIAN GAS LIGHT COMPANY (AGL), NORTH BULLI COLLIERIES PTY LTD			PETROLEUM	Petroleum	0m	On-site
PEL0260	NORTH BULLI COLLIERIES PTY LTD, AGL PETROLEUM OPERATIONS PTY LTD, THE AUSTRALIAN GAS LIGHT CO.	19810909	19930803	PETROLEUM	Petroleum	0m	On-site
PPL0002	AUSTRALIAN OIL AND GAS CORPORATION, EXON N.L.			PETROLEUM	Petroleum	0m	On-site
PEL0102	AUSTRALIAN OIL AND GAS CORPORATION LTD			PETROLEUM	Petroleum	0m	On-site
EL6212	HOT ROCK ENERGY PTY LTD, LONGREACH OIL LIMITED	20040304	20130303	MINERALS	Geothermal	0m	On-site
PEL2	AGL UPSTREAM INVESTMENTS PTY LIMITED	20000120	20001108	MINERALS		0m	On-site
PEL0002	AGL UPSTREAM INVESTMENTS PTY LIMITED	19950503	20150607	PETROLEUM	Petroleum	0m	On-site
EL0127	PATSON PTY LIMITED	19681201	19691201	MINERALS	P	0m	On-site
EL0154	BRICKWORKS LIMITED	19690501	19700501	MINERALS		0m	On-site
EL0080	CONTINENTAL OIL CO OF AUSTRALIA LIMITED	19670201	19680201	MINERALS		0m	On-site
EL0081	CONTINENTAL OIL CO OF AUSTRALIA LIMITED	19670201	19680201	MINERALS		298m	South

Historical Mining & Exploration Titles Data Source: © State of New South Wales through NSW Department of Industry

State Environmental Planning Policy

322 Grose Vale Road, Grose Vale, NSW 2754

State Significant Precincts

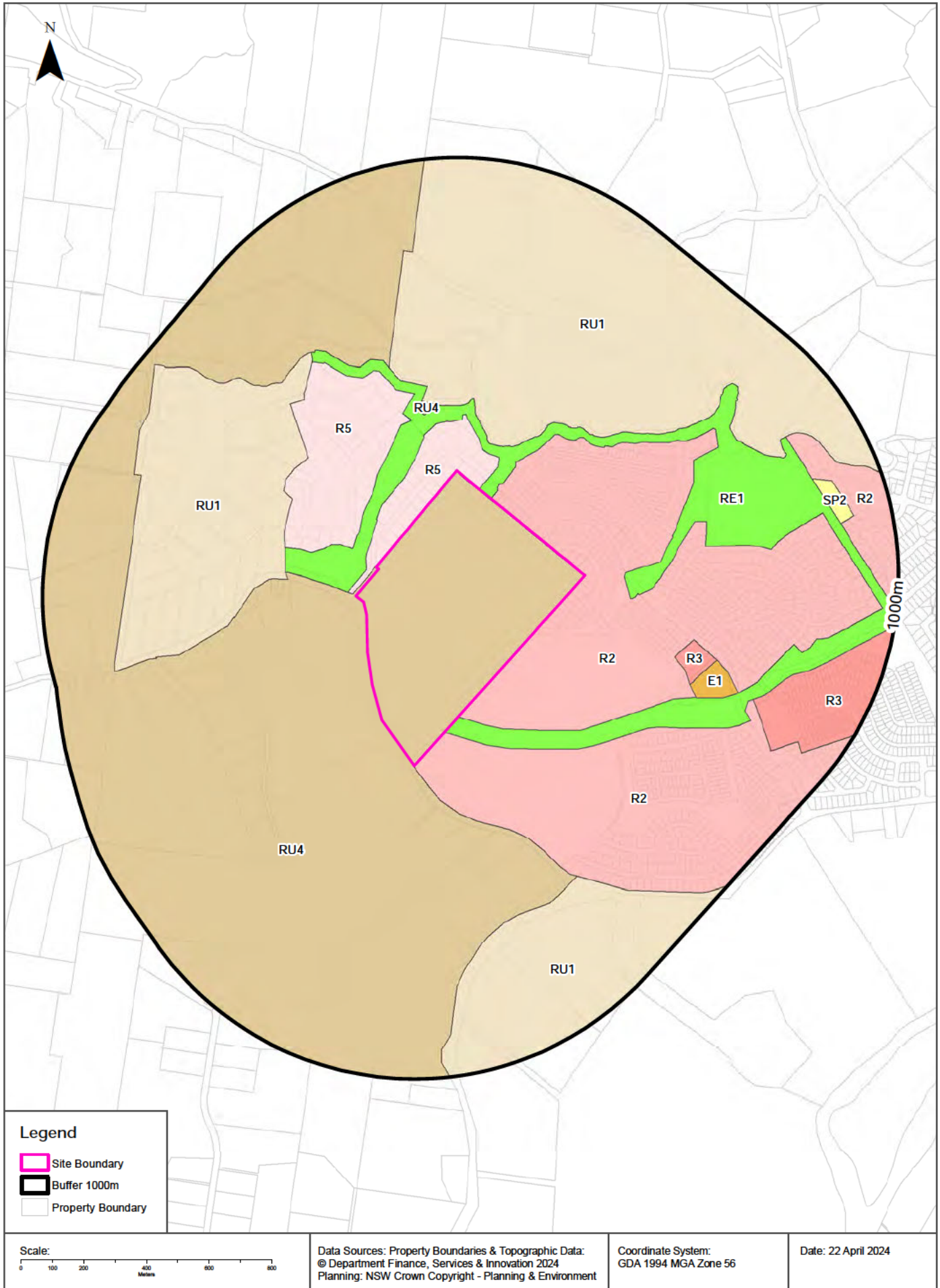
What SEPP State Significant Precincts exist within the dataset buffer?

Map Id	Precinct	EPI Name	Published Date	Commenced Date	Currency Date	Amendment	Distance	Direction
N/A	No records in buffer							

State Environment Planning Policy Data Source: NSW Crown Copyright - Planning & Environment
Creative Commons 4.0 © Commonwealth of Australia <https://creativecommons.org/licenses/by/4.0/>

EPI Planning Zones

322 Grose Vale Road, Grose Vale, NSW 2754



Environmental Planning Instrument

322 Grose Vale Road, Grose Vale, NSW 2754

Land Zoning

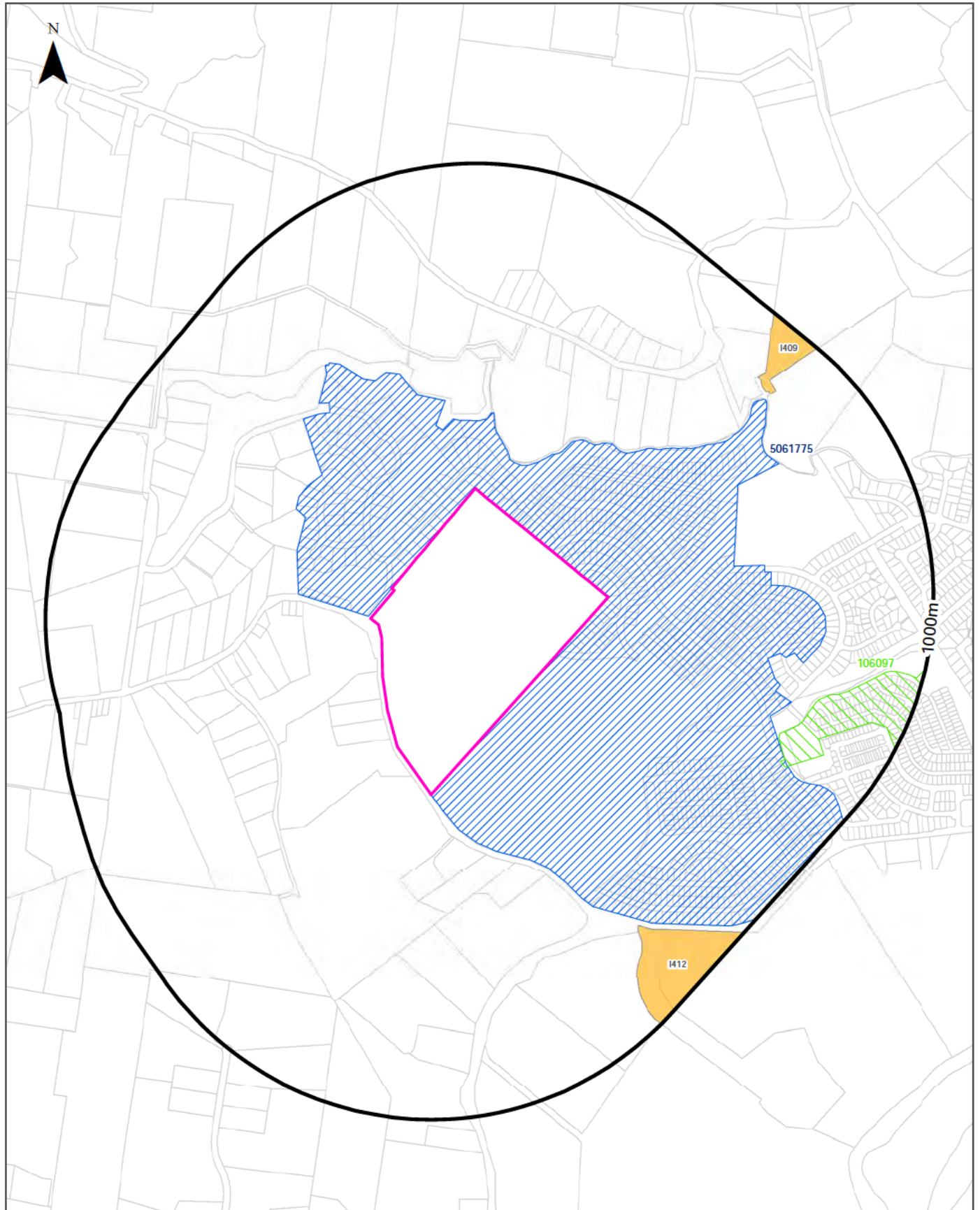
What EPI Land Zones exist within the dataset buffer?

Zone	Description	Purpose	EPI Name	Published Date	Commenced Date	Currency Date	Amendment	Distance	Direction
RU4	Primary Production Small Lots		Hawkesbury Local Environmental Plan 2012	07/07/2023	07/07/2023	12/01/2024	Map Amendment No 4	0m	On-site
RE1	Public Recreation		Hawkesbury Local Environmental Plan 2012	07/07/2023	07/07/2023	12/01/2024	Map Amendment No 4	0m	East
R2	Low Density Residential		Hawkesbury Local Environmental Plan 2012	07/07/2023	07/07/2023	12/01/2024	Map Amendment No 4	0m	South East
R2	Low Density Residential		Hawkesbury Local Environmental Plan 2012	07/07/2023	07/07/2023	12/01/2024	Map Amendment No 4	0m	East
R5	Large Lot Residential		Hawkesbury Local Environmental Plan 2012	07/07/2023	07/07/2023	12/01/2024	Map Amendment No 4	0m	North
R5	Large Lot Residential		Hawkesbury Local Environmental Plan 2012	07/07/2023	07/07/2023	12/01/2024	Map Amendment No 4	93m	North West
RU1	Primary Production		Hawkesbury Local Environmental Plan 2012	07/07/2023	07/07/2023	12/01/2024	Map Amendment No 4	134m	North East
RU4	Primary Production Small Lots		Hawkesbury Local Environmental Plan 2012	07/07/2023	07/07/2023	12/01/2024	Map Amendment No 4	206m	North
RU1	Primary Production		Hawkesbury Local Environmental Plan 2012	07/07/2023	07/07/2023	12/01/2024	Map Amendment No 4	221m	North West
R3	Medium Density Residential		Hawkesbury Local Environmental Plan 2012	07/07/2023	07/07/2023	12/01/2024	Map Amendment No 4	387m	East
E1	Local Centre		Hawkesbury Local Environmental Plan 2012	07/07/2023	07/07/2023	12/01/2024	Map Amendment No 4	481m	East
RU1	Primary Production		Hawkesbury Local Environmental Plan 2012	07/07/2023	07/07/2023	12/01/2024	Map Amendment No 4	577m	South
R3	Medium Density Residential		Hawkesbury Local Environmental Plan 2012	07/07/2023	07/07/2023	12/01/2024	Map Amendment No 4	666m	East
R2	Low Density Residential		Hawkesbury Local Environmental Plan 2012	07/07/2023	07/07/2023	12/01/2024	Map Amendment No 4	779m	East
SP2	Infrastructure	Electricity Generating Works	Hawkesbury Local Environmental Plan 2012	07/07/2023	07/07/2023	12/01/2024	Map Amendment No 4	790m	East

Environmental Planning Instrument Data Source: NSW Crown Copyright - Planning & Environment
Creative Commons 4.0 © Commonwealth of Australia <https://creativecommons.org/licenses/by/4.0/>

Heritage Items

322 Grose Vale Road, Grose Vale, NSW 2754



Legend				
Site Boundary	Commonwealth Heritage List	State Heritage Items		
Property Boundary	Buffer 1000m	National Heritage List	EPI Heritage Items	
Scale: 0 100 200 400 600 800 Metres		Data Sources: Property Boundaries & Topographic Data: © Department Finance, Services & Innovation 2024 Heritage - NSW Crown Copyright - Planning & Environment	Coordinate System: GDA 1994 MGA Zone 56	Date: 22 April 2024

Heritage

322 Grose Vale Road, Grose Vale, NSW 2754

Commonwealth Heritage List

What are the Commonwealth Heritage List Items located within the dataset buffer?

Place Id	Name	Address	Place File No	Class	Status	Register Date	Distance	Direction
N/A	No records in buffer							

Heritage Data Source: Australian Government Department of the Environment and Energy - Heritage Branch
Creative Commons 3.0 © Commonwealth of Australia <https://creativecommons.org/licenses/by/3.0/au/deed.en>

National Heritage List

What are the National Heritage List Items located within the dataset buffer?

Note. Please click on Place Id to activate a hyperlink to online website.

Place Id	Name	Address	Place File No	Class	Status	Register Date	Distance	Direction
106097	Farming Development Site	108 Grose Vale Rd, North Richmond NSW	1/14/051/0022	Historic	Place rejected for Emergency Listing		675m	East

Heritage Data Source: Australian Government Department of the Environment and Energy - Heritage Branch
Creative Commons 3.0 © Commonwealth of Australia <https://creativecommons.org/licenses/by/3.0/au/deed.en>

State Heritage Register - Curtilages

What are the State Heritage Register Items located within the dataset buffer?

Map Id	Name	Address	LGA	Listing Date	Listing No	Plan No	Distance	Direction
5061775	Yobarnie Keyline Farm	Grose Vale Road, Grose Vale	HAWKESBURY	08/03/2013	01826	2291	0m	East

Heritage Data Source: NSW Crown Copyright - Office of Environment & Heritage
Creative Commons 4.0 © Commonwealth of Australia <https://creativecommons.org/licenses/by/4.0/>

Environmental Planning Instrument - Heritage

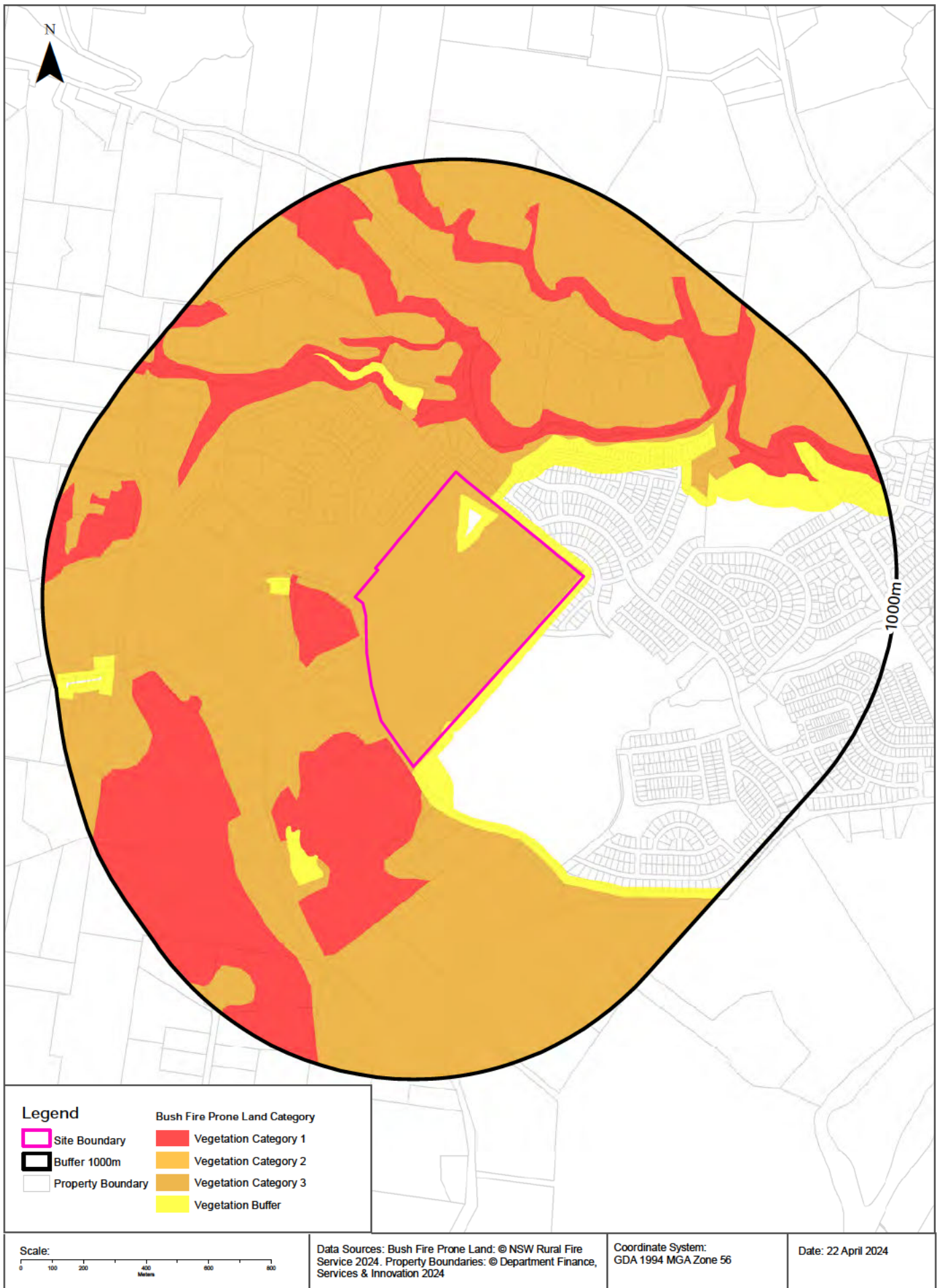
What are the EPI Heritage Items located within the dataset buffer?

Map Id	Name	Classification	Significance	EPI Name	Published Date	Commenced Date	Currency Date	Distance	Direction
I412	St John of God Hospital (former 'Belmont Park', mansion, garden, building, gatehouse and curtilage)	Item - General	Local	Hawkesbury Local Environmental Plan 2012	21/09/2012	21/09/2012	21/07/2023	744m	South East
I409	'Hill Crest'	Item - General	Local	Hawkesbury Local Environmental Plan 2012	21/09/2012	21/09/2012	21/07/2023	800m	North East

Heritage Data Source: NSW Crown Copyright - Planning & Environment
Creative Commons 4.0 © Commonwealth of Australia <https://creativecommons.org/licenses/by/4.0/>

Natural Hazards - Bush Fire Prone Land

322 Grose Vale Road, Grose Vale, NSW 2754



Natural Hazards

322 Grose Vale Road, Grose Vale, NSW 2754

Bush Fire Prone Land

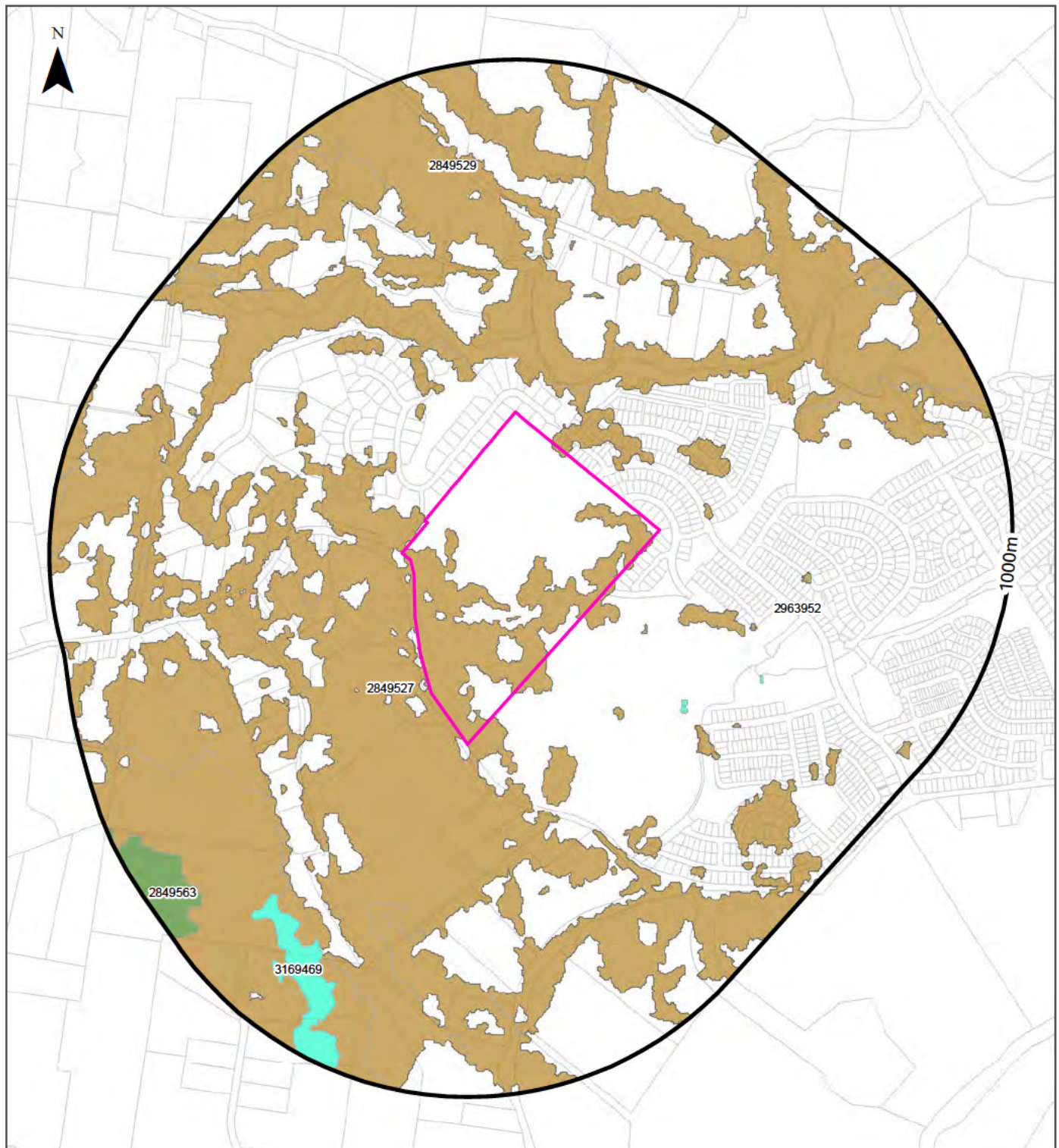
What are the nearest Bush Fire Prone Land Categories that exist within the dataset buffer?

Bush Fire Prone Land Category	Distance	Direction
Vegetation Category 3	0m	On-site
Vegetation Buffer	0m	On-site
Vegetation Category 1	14m	South West

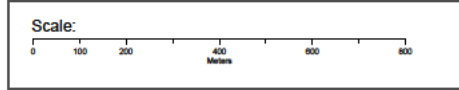
NSW Bush Fire Prone Land - © NSW Rural Fire Service under Creative Commons 4.0 International Licence

Ecological Constraints - Vegetation & Ramsar Wetlands

322 Grose Vale Road, Grose Vale, NSW 2754



Site Boundary	Dry Sclerophyll Forests (Shrub/grass sub-formation)	Semi-arid Woodlands (Grassy sub-formation)
Report Buffer	Dry Sclerophyll Forests (Shrubby sub-formation)	Semi-arid Woodlands (Shrubby sub-formation)
Property Boundary	Forested Wetlands	Wet Sclerophyll Forests (Grassy sub-formation)
Ramsar Wetland	Freshwater Wetlands	Wet Sclerophyll Forests (Shrubby sub-formation)
Native Vegetation		
Alpine Complex	Grasslands	Non vegetated
Arid Shrublands (Acacia sub-formation)	Grassy Woodlands	Unattributed
Arid Shrublands (Chenopod sub-formation)	Heathlands	Not classified
Rainforests	Saline Wetlands	Other



Data Sources: Property Boundaries & Topographic Data.
© Department Finance, Services & Innovation 2024

Coordinate System:
GDA 1994 MGA Zone 56

Date: 22 April 2024

Ecological Constraints

322 Grose Vale Road, Grose Vale, NSW 2754

Native Vegetation

What native vegetation exists within the dataset buffer?

Map ID	Vegetation Formation	Plant Community Type and Vegetation Formation	Vegetation Class	Dist	Dir
2849527	Grassy Woodlands	(Grassy Woodlands) Cumberland Shale Plains Woodland	Coastal Valley Grassy Woodlands	0m	On-site
2963952	Not classified	(Not classified) Not classified	Not classified	0m	On-site
2849529	Grassy Woodlands	(Grassy Woodlands) Cumberland Shale-Sandstone Ironbark Forest	Coastal Valley Grassy Woodlands	83m	North
3169469	Forested Wetlands	(Forested Wetlands) Sydney Hinterland Red Gum Riverflat Forest	Coastal Floodplain Wetlands	369m	South West
2849563	Dry Sclerophyll Forests (Shrubby sub-formation)	(Dry Sclerophyll Forests (Shrubby sub-formation)) Sydney Hinterland Grey Gum Transition Forest	Sydney Hinterland Dry Sclerophyll Forests	846m	South West

Native Vegetation Type Map : NSW Department of Planning and Environment 2022

Creative Commons Attributions 4.0 © Commonwealth of Australia <https://creativecommons.org/licenses/by/4.0/>

Ecological Constraints

322 Grose Vale Road, Grose Vale, NSW 2754

Ramsar Wetlands

What Ramsar Wetland areas exist within the dataset buffer?

Map ID	Ramsar Name	Wetland Name	Designation Date	Source	Distance	Direction
N/A	No records in buffer					

Ramsar Wetlands Data Source: © Commonwealth of Australia - Department of Agriculture, Water and the Environment

Ecological Constraints

322 Grose Vale Road, Grose Vale, NSW 2754

Collaborative Australian Protected Areas Database - Terrestrial

Protected areas in terrestrial environments identified by the CAPAD within the dataset buffer:

Map ID	Area Name	Area Details	Management Category	Authority	Jurisdiction	Dist	Dir
N/A	No records in buffer						

Collaborative Australian Protected Areas Database - Marine

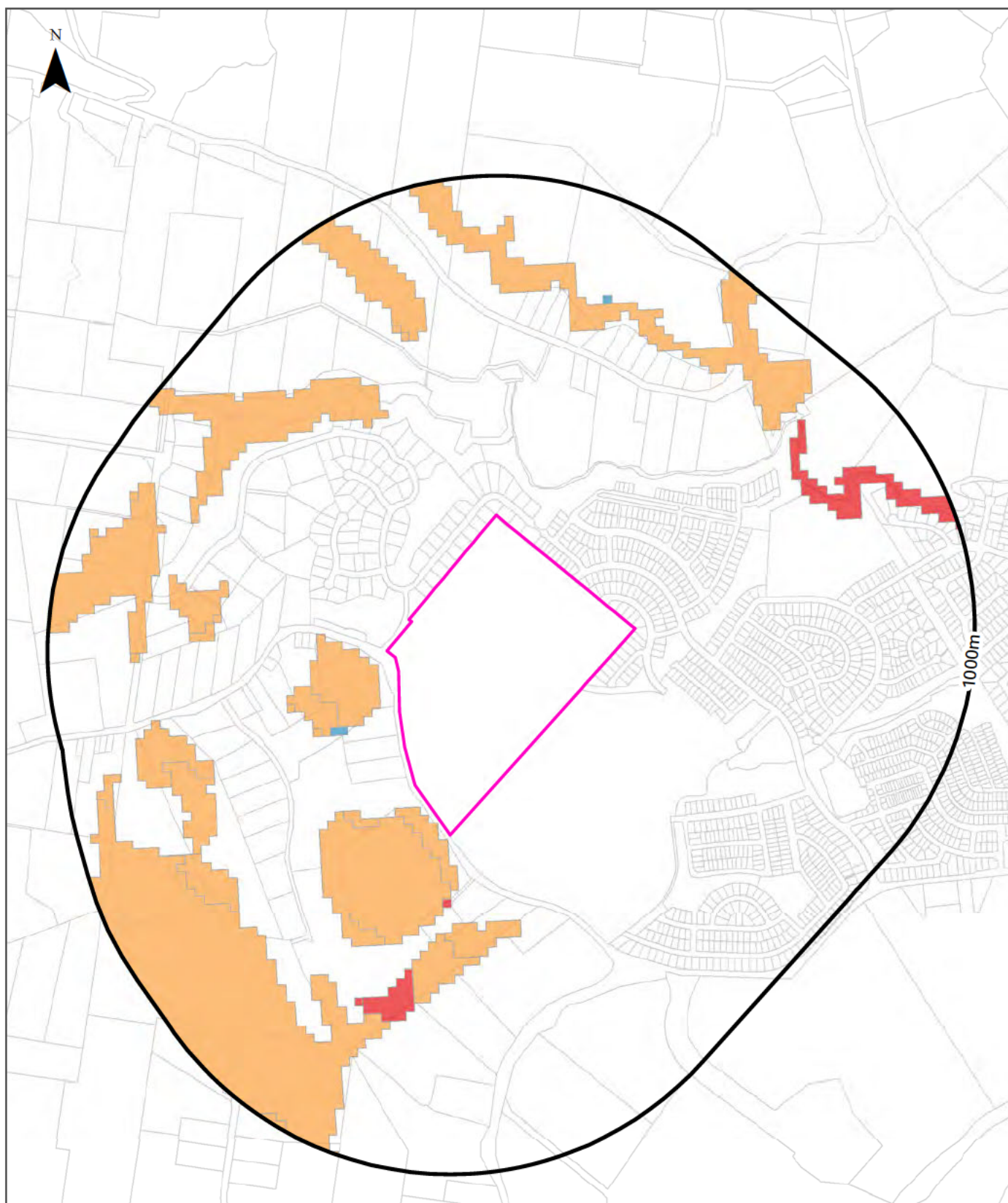
Protected areas in marine environments identified by the CAPAD within the dataset buffer:

Map ID	Area Name	Area Details	Management Category	Authority	Jurisdiction	Dist	Dir
N/A	No records in buffer						

Source: Collaborative Australian Protected Areas Database (CAPAD) 2022
Creative Commons 4.0 © Commonwealth of Australia 2023

Ecological Constraints - Groundwater Dependent Ecosystems Atlas

322 Grose Vale Road, Grose Vale, NSW 2754



Legend	
Site Boundary	High potential GDE - from national assessment
Buffer 1000m	Moderate potential GDE - from national assessment
Property Boundaries	Low potential GDE - from national assessment
High potential GDE - from regional studies	Low potential GDE - from regional studies
Moderate potential GDE - from regional studies	Known GDE - from regional studies
Unclassified potential GDE - from national assessment	Unclassified potential GDE - from national assessment
Unclassified potential GDE - from regional studies	Unclassified potential GDE - from regional studies

<p>Scale:</p>	<p>Data Sources: Property Boundaries & Topographic Data: © Department Finance, Services & Innovation 2024</p>	<p>Coordinate System: GDA 1994 MGA Zone 56</p>	<p>Date: 22 April 2024</p>
---------------	---	--	----------------------------

Ecological Constraints

322 Grose Vale Road, Grose Vale, NSW 2754

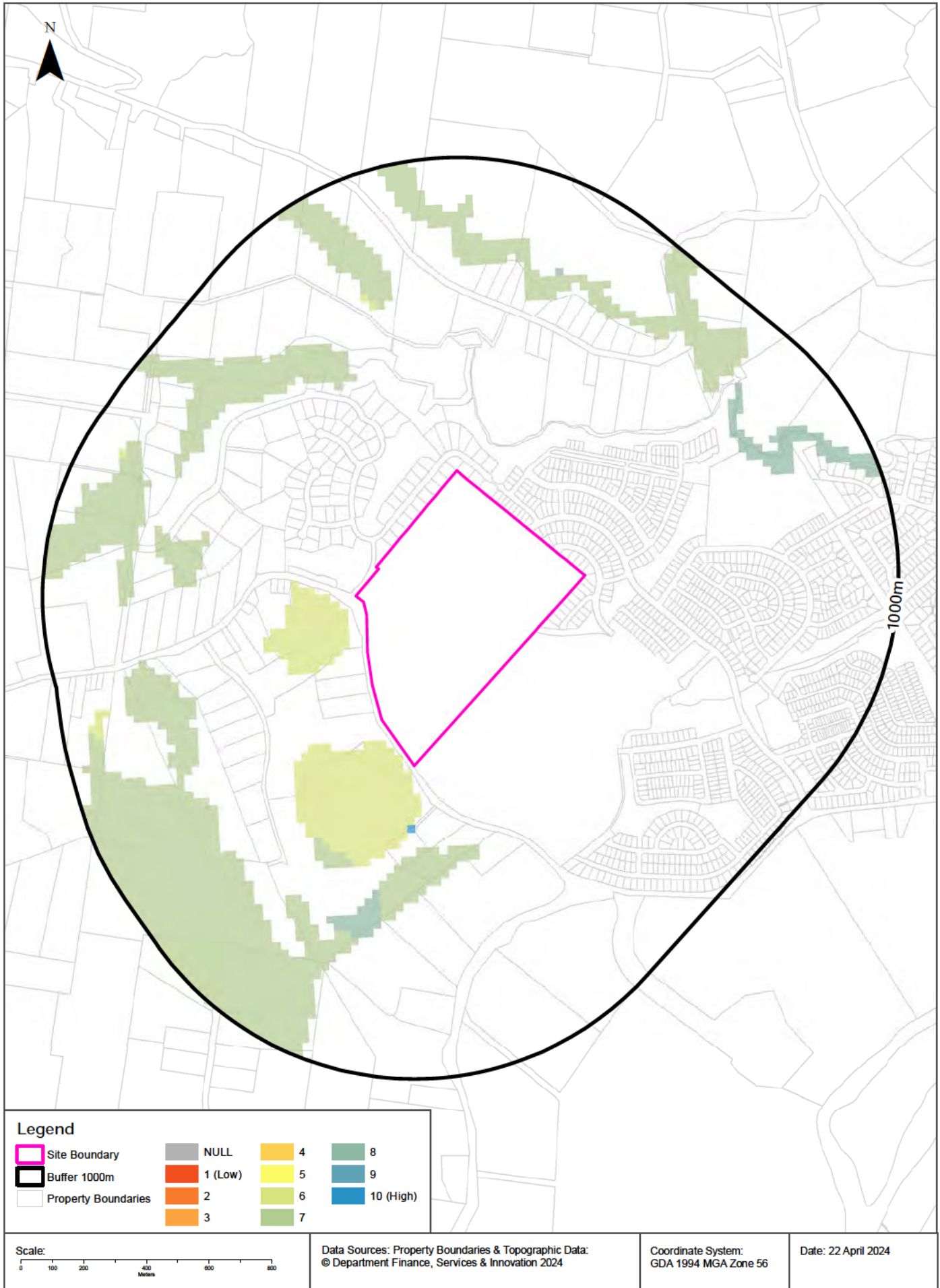
Groundwater Dependent Ecosystems Atlas

Type	GDE Potential	Geomorphology	Ecosystem Type	Aquifer Geology	Distance	Direction
Terrestrial	Moderate potential GDE - from national assessment	Deeply dissected sandstone plateaus.	Vegetation	Consolidated sedimentary	7m	South
Terrestrial	Low potential GDE - from national assessment	Deeply dissected sandstone plateaus.	Vegetation	Consolidated sedimentary	157m	South West
Terrestrial	High potential GDE - from national assessment	Deeply dissected sandstone plateaus.	Vegetation	Consolidated sedimentary	187m	South

Groundwater Dependent Ecosystems Atlas Data Source: The Bureau of Meteorology
Creative Commons 3.0 © Commonwealth of Australia <http://creativecommons.org/licenses/by/3.0/au/deed.en>

Ecological Constraints - Inflow Dependent Ecosystems Likelihood

322 Grose Vale Road, Grose Vale, NSW 2754



Ecological Constraints

322 Grose Vale Road, Grose Vale, NSW 2754

Inflow Dependent Ecosystems Likelihood

Type	IDE Likelihood	Geomorphology	Ecosystem Type	Aquifer Geology	Distance	Direction
Terrestrial	6	Deeply dissected sandstone plateaus.	Vegetation	Consolidated sedimentary	7m	South
Terrestrial	10	Deeply dissected sandstone plateaus.	Vegetation	Consolidated sedimentary	187m	South
Terrestrial	7	Deeply dissected sandstone plateaus.	Vegetation	Consolidated sedimentary	261m	South
Terrestrial	8	Deeply dissected sandstone plateaus.	Vegetation	Consolidated sedimentary	408m	South

Inflow Dependent Ecosystems Likelihood Data Source: The Bureau of Meteorology

Creative Commons 3.0 © Commonwealth of Australia <http://creativecommons.org/licenses/by/3.0/au/deed.en>

Ecological Constraints

322 Grose Vale Road, Grose Vale, NSW 2754

NSW BioNet Atlas

Species on the NSW BioNet Atlas that have a NSW or federal conservation status, a NSW sensitivity status, or are listed under a migratory species agreement, and are within 10km of the site?

Kingdom	Class	Scientific	Common	NSW Conservation Status	NSW Sensitivity Class	Federal Conservation Status	Migratory Species Agreements
Animalia	Amphibia	Heleioporus australiacus	Giant Burrowing Frog	Vulnerable	Not Sensitive	Vulnerable	
Animalia	Amphibia	Litoria aurea	Green and Golden Bell Frog	Endangered	Not Sensitive	Vulnerable	
Animalia	Amphibia	Pseudophryne australis	Red-crowned Toadlet	Vulnerable	Not Sensitive	Not Listed	
Animalia	Aves	Acrocephalus orientalis	Oriental Reed-Warbler	Not Listed	Not Sensitive	Not Listed	ROKAMBA;CAMBA;JAMBA
Animalia	Aves	Actitis hypoleucos	Common Sandpiper	Not Listed	Not Sensitive	Not Listed	ROKAMBA;CAMBA;JAMBA
Animalia	Aves	Anthochaera phrygia	Regent Honeyeater	Critically Endangered	Category 2	Critically Endangered	
Animalia	Aves	Apus pacificus	Fork-tailed Swift	Not Listed	Not Sensitive	Not Listed	ROKAMBA;CAMBA;JAMBA
Animalia	Aves	Ardenna carneipes	Flesh-footed Shearwater	Vulnerable	Not Sensitive	Not Listed	ROKAMBA;JAMBA
Animalia	Aves	Ardenna tenuirostris	Short-tailed Shearwater	Not Listed	Not Sensitive	Not Listed	ROKAMBA;CAMBA;JAMBA
Animalia	Aves	Artamus cyanopterus cyanopterus	Dusky Woodswallow	Vulnerable	Not Sensitive	Not Listed	
Animalia	Aves	Botaurus poiciloptilus	Australasian Bittern	Endangered	Not Sensitive	Endangered	
Animalia	Aves	Calidris acuminata	Sharp-tailed Sandpiper	Not Listed	Not Sensitive	Not Listed	ROKAMBA;CAMBA;JAMBA
Animalia	Aves	Calidris ferruginea	Curlew Sandpiper	Endangered	Not Sensitive	Critically Endangered	ROKAMBA;CAMBA;JAMBA
Animalia	Aves	Calidris melanotos	Pectoral Sandpiper	Not Listed	Not Sensitive	Not Listed	ROKAMBA;JAMBA
Animalia	Aves	Calidris ruficollis	Red-necked Stint	Not Listed	Not Sensitive	Not Listed	ROKAMBA;CAMBA;JAMBA
Animalia	Aves	Callocephalon fimbriatum	Gang-gang Cockatoo	Vulnerable	Category 3	Endangered	
Animalia	Aves	Calyptorhynchus banksii samueli	Red-tailed Black-Cockatoo (inland subspecies)	Vulnerable	Category 2	Not Listed	
Animalia	Aves	Calyptorhynchus lathami lathami	South-eastern Glossy Black-Cockatoo	Vulnerable	Category 2	Vulnerable	
Animalia	Aves	Chlidonias leucopterus	White-winged Black Tern	Not Listed	Not Sensitive	Not Listed	ROKAMBA;CAMBA;JAMBA
Animalia	Aves	Chthonicola sagittata	Speckled Warbler	Vulnerable	Not Sensitive	Not Listed	
Animalia	Aves	Circus assimilis	Spotted Harrier	Vulnerable	Not Sensitive	Not Listed	
Animalia	Aves	Climacteris picumnus victoriae	Brown Treecreeper (eastern subspecies)	Vulnerable	Not Sensitive	Not Listed	
Animalia	Aves	Daphoenositta chrysoptera	Varied Sittella	Vulnerable	Not Sensitive	Not Listed	
Animalia	Aves	Ephippiorhynchus asiaticus	Black-necked Stork	Endangered	Not Sensitive	Not Listed	
Animalia	Aves	Epthianura albifrons	White-fronted Chat	Vulnerable	Not Sensitive	Not Listed	
Animalia	Aves	Falco subniger	Black Falcon	Vulnerable	Not Sensitive	Not Listed	

Kingdom	Class	Scientific	Common	NSW Conservation Status	NSW Sensitivity Class	Federal Conservation Status	Migratory Species Agreements
Animalia	Aves	Gallinago hardwickii	Latham's Snipe	Not Listed	Not Sensitive	Not Listed	ROKAMBA;JAMBA
Animalia	Aves	Gelochelidon nilotica	Gull-billed Tern	Not Listed	Not Sensitive	Not Listed	CAMBA
Animalia	Aves	Glareola maldivarum	Oriental Pratincole	Not Listed	Not Sensitive	Not Listed	ROKAMBA;CAMBA;JAMBA
Animalia	Aves	Glossopsitta pusilla	Little Lorikeet	Vulnerable	Not Sensitive	Not Listed	
Animalia	Aves	Grantiella picta	Painted Honeyeater	Vulnerable	Not Sensitive	Vulnerable	
Animalia	Aves	Haliaeetus leucogaster	White-bellied Sea-Eagle	Vulnerable	Not Sensitive	Not Listed	
Animalia	Aves	Hieraaetus morphnoides	Little Eagle	Vulnerable	Not Sensitive	Not Listed	
Animalia	Aves	Hirundapus caudacutus	White-throated Needletail	Not Listed	Not Sensitive	Vulnerable	ROKAMBA;CAMBA;JAMBA
Animalia	Aves	Hydroprogne caspia	Caspian Tern	Not Listed	Not Sensitive	Not Listed	JAMBA
Animalia	Aves	Irediparra gallinacea	Comb-crested Jacana	Vulnerable	Not Sensitive	Not Listed	
Animalia	Aves	Ixobrychus flavicollis	Black Bittern	Vulnerable	Not Sensitive	Not Listed	
Animalia	Aves	Lathamus discolor	Swift Parrot	Endangered	Not Sensitive	Critically Endangered	
Animalia	Aves	Limosa limosa	Black-tailed Godwit	Vulnerable	Not Sensitive	Not Listed	ROKAMBA;CAMBA;JAMBA
Animalia	Aves	Lophoictinia isura	Square-tailed Kite	Vulnerable	Category 3	Not Listed	
Animalia	Aves	Melithreptus gularis gularis	Black-chinned Honeyeater (eastern subspecies)	Vulnerable	Not Sensitive	Not Listed	
Animalia	Aves	Motacilla flava	Yellow Wagtail	Not Listed	Not Sensitive	Not Listed	ROKAMBA;CAMBA;JAMBA
Animalia	Aves	Neochmia ruficauda	Star Finch	Extinct	Not Sensitive	Endangered	
Animalia	Aves	Neophema pulchella	Turquoise Parrot	Vulnerable	Category 3	Not Listed	
Animalia	Aves	Ninox connivens	Barking Owl	Vulnerable	Category 3	Not Listed	
Animalia	Aves	Ninox strenua	Powerful Owl	Vulnerable	Category 3	Not Listed	
Animalia	Aves	Numenius minutus	Little Curlew	Not Listed	Not Sensitive	Not Listed	ROKAMBA;CAMBA;JAMBA
Animalia	Aves	Onychoprion fuscata	Sooty Tern	Vulnerable	Not Sensitive	Not Listed	
Animalia	Aves	Oxyura australis	Blue-billed Duck	Vulnerable	Not Sensitive	Not Listed	
Animalia	Aves	Pachycephala olivacea	Olive Whistler	Vulnerable	Not Sensitive	Not Listed	
Animalia	Aves	Pandion cristatus	Eastern Osprey	Vulnerable	Category 3	Not Listed	
Animalia	Aves	Petroica boodang	Scarlet Robin	Vulnerable	Not Sensitive	Not Listed	
Animalia	Aves	Petroica phoenicea	Flame Robin	Vulnerable	Not Sensitive	Not Listed	
Animalia	Aves	Petroica rodinogaster	Pink Robin	Vulnerable	Not Sensitive	Not Listed	
Animalia	Aves	Pezoporus wallicus wallicus	Eastern Ground Parrot	Vulnerable	Category 3	Not Listed	
Animalia	Aves	Pluvialis fulva	Pacific Golden Plover	Not Listed	Not Sensitive	Not Listed	ROKAMBA;CAMBA;JAMBA
Animalia	Aves	Pluvialis squatarola	Grey Plover	Not Listed	Not Sensitive	Not Listed	ROKAMBA;CAMBA;JAMBA
Animalia	Aves	Polytelis swainsonii	Superb Parrot	Vulnerable	Category 3	Vulnerable	
Animalia	Aves	Pomatostomus temporalis temporalis	Grey-crowned Babbler (eastern subspecies)	Vulnerable	Not Sensitive	Not Listed	

Kingdom	Class	Scientific	Common	NSW Conservation Status	NSW Sensitivity Class	Federal Conservation Status	Migratory Species Agreements
Animalia	Aves	<i>Pycnoptilus floccosus</i>	Pilotbird	Not Listed	Not Sensitive	Vulnerable	
Animalia	Aves	<i>Rostratula australis</i>	Australian Painted Snipe	Endangered	Not Sensitive	Endangered	
Animalia	Aves	<i>Stictonetta naevosa</i>	Freckled Duck	Vulnerable	Not Sensitive	Not Listed	
Animalia	Aves	<i>Tringa glareola</i>	Wood Sandpiper	Not Listed	Not Sensitive	Not Listed	ROKAMBA;CAMBA; JAMBA
Animalia	Aves	<i>Tringa nebularia</i>	Common Greenshank	Not Listed	Not Sensitive	Not Listed	ROKAMBA;CAMBA; JAMBA
Animalia	Aves	<i>Tringa stagnatilis</i>	Marsh Sandpiper	Not Listed	Not Sensitive	Not Listed	ROKAMBA;CAMBA; JAMBA
Animalia	Aves	<i>Tyto novaehollandiae</i>	Masked Owl	Vulnerable	Category 3	Not Listed	
Animalia	Aves	<i>Tyto tenebricosa</i>	Sooty Owl	Vulnerable	Category 3	Not Listed	
Animalia	Gastropoda	<i>Meridolum corneovirens</i>	Cumberland Plain Land Snail	Endangered	Not Sensitive	Not Listed	
Animalia	Gastropoda	<i>Pommerhelix duralensis</i>	Dural Land Snail	Endangered	Not Sensitive	Endangered	
Animalia	Insecta	<i>Petalura gigantea</i>	Giant Dragonfly	Endangered	Not Sensitive	Not Listed	
Animalia	Mammalia	<i>Cercartetus nanus</i>	Eastern Pygmy-possum	Vulnerable	Not Sensitive	Not Listed	
Animalia	Mammalia	<i>Chalinolobus dwyeri</i>	Large-eared Pied Bat	Vulnerable	Not Sensitive	Vulnerable	
Animalia	Mammalia	<i>Dasyurus maculatus</i>	Spotted-tailed Quoll	Vulnerable	Not Sensitive	Endangered	
Animalia	Mammalia	<i>Falsistrellus tasmaniensis</i>	Eastern False Pipistrelle	Vulnerable	Not Sensitive	Not Listed	
Animalia	Mammalia	<i>Micronomus norfolkensis</i>	Eastern Coastal Free-tailed Bat	Vulnerable	Not Sensitive	Not Listed	
Animalia	Mammalia	<i>Miniopterus australis</i>	Little Bent-winged Bat	Vulnerable	Not Sensitive	Not Listed	
Animalia	Mammalia	<i>Miniopterus orianae oceanensis</i>	Large Bent-winged Bat	Vulnerable	Not Sensitive	Not Listed	
Animalia	Mammalia	<i>Myotis macropus</i>	Southern Myotis	Vulnerable	Not Sensitive	Not Listed	
Animalia	Mammalia	<i>Petauroides volans</i>	Southern Greater Glider	Endangered	Not Sensitive	Endangered	
Animalia	Mammalia	<i>Petaurus australis</i>	Yellow-bellied Glider	Vulnerable	Not Sensitive	Vulnerable	
Animalia	Mammalia	<i>Petaurus australis</i>	Yellow-bellied Glider	Vulnerable	Not Sensitive	Not Listed	
Animalia	Mammalia	<i>Petaurus norfolkensis</i>	Squirrel Glider	Vulnerable	Not Sensitive	Not Listed	
Animalia	Mammalia	<i>Petrogale penicillata</i>	Brush-tailed Rock-wallaby	Endangered	Not Sensitive	Vulnerable	
Animalia	Mammalia	<i>Phascolarctos cinereus</i>	Koala	Endangered	Not Sensitive	Endangered	
Animalia	Mammalia	<i>Pteropus poliocephalus</i>	Grey-headed Flying-fox	Vulnerable	Not Sensitive	Vulnerable	
Animalia	Mammalia	<i>Saccolaimus flaviventris</i>	Yellow-bellied Sheath-tail-bat	Vulnerable	Not Sensitive	Not Listed	
Animalia	Mammalia	<i>Scoteanax rueppellii</i>	Greater Broad-nosed Bat	Vulnerable	Not Sensitive	Not Listed	
Animalia	Mammalia	<i>Vespadelus troughtoni</i>	Eastern Cave Bat	Vulnerable	Not Sensitive	Not Listed	
Animalia	Reptilia	<i>Caretta caretta</i>	Loggerhead Turtle	Endangered	Not Sensitive	Endangered	
Animalia	Reptilia	<i>Chelonia mydas</i>	Green Turtle	Vulnerable	Not Sensitive	Vulnerable	
Animalia	Reptilia	<i>Hoplocephalus bungaroides</i>	Broad-headed Snake	Endangered	Category 2	Vulnerable	
Animalia	Reptilia	<i>Tiliqua occipitalis</i>	Western Blue-tongued Lizard	Vulnerable	Not Sensitive	Not Listed	
Plantae	Flora	<i>Acacia bynoeana</i>	Bynoe's Wattle	Endangered	Not Sensitive	Vulnerable	

Kingdom	Class	Scientific	Common	NSW Conservation Status	NSW Sensitivity Class	Federal Conservation Status	Migratory Species Agreements
Plantae	Flora	Acacia flocktoniae	Flockton Wattle	Vulnerable	Not Sensitive	Vulnerable	
Plantae	Flora	Acacia meiantha		Endangered	Not Sensitive	Endangered	
Plantae	Flora	Acacia pubescens	Downy Wattle	Vulnerable	Not Sensitive	Vulnerable	
Plantae	Flora	Acrophyllum australe		Vulnerable	Not Sensitive	Vulnerable	
Plantae	Flora	Allocasuarina glareicola		Endangered	Not Sensitive	Endangered	
Plantae	Flora	Cymbidium canaliculatum	Tiger Orchid	Not Listed	Category 2	Not Listed	
Plantae	Flora	Cynanchum elegans	White-flowered Wax Plant	Endangered	Not Sensitive	Endangered	
Plantae	Flora	Dillwynia tenuifolia		Vulnerable	Not Sensitive	Not Listed	
Plantae	Flora	Epacris sparsa	Sparse Heath	Vulnerable	Not Sensitive	Vulnerable	
Plantae	Flora	Eucalyptus benthamii	Camden White Gum	Critically Endangered	Not Sensitive	Vulnerable	
Plantae	Flora	Grammitis stenophylla	Narrow-leaf Finger Fern	Endangered	Category 3	Not Listed	
Plantae	Flora	Grevillea juniperina subsp. juniperina	Juniper-leaved Grevillea	Vulnerable	Not Sensitive	Not Listed	
Plantae	Flora	Grevillea parviflora subsp. parviflora	Small-flower Grevillea	Vulnerable	Not Sensitive	Vulnerable	
Plantae	Flora	Hibbertia fumana		Critically Endangered	Not Sensitive	Not Listed	
Plantae	Flora	Hibbertia sp. Bankstown		Critically Endangered	Not Sensitive	Critically Endangered	
Plantae	Flora	Isotoma fluviatilis subsp. fluviatilis		Not Listed	Category 3	Extinct	
Plantae	Flora	Leucopogon exolasius	Woronora Beard-heath	Vulnerable	Not Sensitive	Vulnerable	
Plantae	Flora	Leucopogon fletcheri subsp. fletcheri		Endangered	Not Sensitive	Not Listed	
Plantae	Flora	Marsdenia viridiflora subsp. viridiflora	Native Pear	Endangered Population	Not Sensitive	Not Listed	
Plantae	Flora	Micromyrtus minutiflora		Endangered	Not Sensitive	Vulnerable	
Plantae	Flora	Persoonia nutans	Nodding Geebung	Endangered	Not Sensitive	Endangered	
Plantae	Flora	Pimelea curviflora var. curviflora		Vulnerable	Not Sensitive	Vulnerable	
Plantae	Flora	Pimelea spicata	Spiked Rice-flower	Endangered	Not Sensitive	Endangered	
Plantae	Flora	Pterostylis saxicola	Sydney Plains Greenhood	Endangered	Category 2	Endangered	
Plantae	Flora	Pultenaea parviflora		Endangered	Not Sensitive	Vulnerable	
Plantae	Flora	Pultenaea villifera		Endangered Population	Not Sensitive	Not Listed	
Plantae	Flora	Rhodamnia rubescens	Scrub Turpentine	Critically Endangered	Not Sensitive	Critically Endangered	
Plantae	Flora	Syzygium paniculatum	Magenta Lilly Pilly	Endangered	Not Sensitive	Vulnerable	
Plantae	Flora	Tetradlea glandulosa		Vulnerable	Not Sensitive	Not Listed	
Plantae	Flora	Tylophora woollsii	Cryptic Forest Twiner	Endangered	Not Sensitive	Endangered	
Plantae	Flora	Zieria involucreta		Endangered	Not Sensitive	Vulnerable	

Data does not include NSW category 1 sensitive species.

NSW BioNet: © State of NSW and Office of Environment and Heritage

Location Confidences

Where Lotsearch has had to georeference features from supplied addresses, a location confidence has been assigned to the data record. This indicates a confidence to the positional accuracy of the feature. Where applicable, a code is given under the field heading "LC" or "LocConf". These codes lookup to the following location confidences:

LC Code	Location Confidence
Premise Match	Georeferenced to the site location / premise or part of site
Area Match	Georeferenced to an approximate or general area
Road Match	Georeferenced to a road or rail corridor
Road Intersection	Georeferenced to a road intersection
Buffered Point	A point feature buffered to x metres
Adjacent Match	Land adjacent to a georeferenced feature
Network of Features	Georeferenced to a network of features
Suburb Match	Georeferenced to a suburb boundary
As Supplied	Spatial data supplied by provider

USE OF REPORT - APPLICABLE TERMS

The following terms apply to any person (End User) who is given the Report by the person who purchased the Report from Lotsearch Pty Ltd (ABN: 89 600 168 018) (Lotsearch) or who otherwise has access to the Report (Terms). The contract terms that apply between Lotsearch and the purchaser of the Report are specified in the order form pursuant to which the Report was ordered and the terms set out below are of no effect as between Lotsearch and the purchaser of the Report.

1. End User acknowledges and agrees that:
 - (a) the Report is compiled from or using content (**Third Party Content**) which is comprised of:
 - (i) content provided to Lotsearch by third party content suppliers with whom Lotsearch has contractual arrangements or content which is freely available or methodologies licensed to Lotsearch by third parties with whom Lotsearch has contractual arrangements (**Third Party Content Suppliers**); and
 - (ii) content which is derived from content described in paragraph (i);
 - (b) Neither Lotsearch nor Third Party Content Suppliers takes any responsibility for or give any warranty in relation to the accuracy or completeness of any Third Party Content included in the Report including any contaminated land assessment or other assessment included as part of a Report;
 - (c) the Third Party Content Suppliers do not constitute an exhaustive set of all repositories or sources of information available in relation to the property which is the subject of the Report (**Property**) and accordingly neither Lotsearch nor Third Party Content Suppliers gives any warranty in relation to the accuracy or completeness of the Third Party Content incorporated into the report including any contaminated land assessment or other assessment included as part of a Report;
 - (d) Reports are generated at a point in time (as specified by the date/time stamp appearing on the Report) and accordingly the Report is based on the information available at that point in time and Lotsearch is not obliged to undertake any additional reporting to take into consideration any information that may become available between the point in time specified by the date/time stamp and the date on which the Report was provided by Lotsearch to the purchaser of the Report;
 - (e) Reports must be used or reproduced in their entirety and End User must not reproduce or make available to other persons only parts of the Report;
 - (f) Lotsearch has not undertaken any physical inspection of the property;
 - (g) neither Lotsearch nor Third Party Content Suppliers warrants that all land uses or features whether past or current are identified in the Report;
 - (h) the Report does not include any information relating to the actual state or condition of the Property;
 - (i) the Report should not be used or taken to indicate or exclude actual fitness or unfitness of Land or Property for any particular purpose
 - (j) the Report should not be relied upon for determining saleability or value or making any other decisions in relation to the Property and in particular should not be taken to be a rating or assessment of the desirability or market value of the property or its features; and
 - (k) the End User should undertake its own inspections of the Land or Property to satisfy itself that there are no defects or failures
2. The End User may not make the Report or any copies or extracts of the report or any part of it available to any other person. If End User wishes to provide the Report to any other person or make extracts or copies of the Report, it must contact the purchaser of the Report before doing so to ensure the proposed use is consistent with the contract terms between Lotsearch and the purchaser.
3. Neither Lotsearch (nor any of its officers, employees or agents) nor any of its Third Party Content Suppliers will have any liability to End User or any person to whom End User provides the Report and End User must not represent that Lotsearch or any of its Third Party Content Suppliers accepts liability to any such person or make any other representation to any such person on behalf of Lotsearch or any Third Party Content Supplier.
4. The End User hereby to the maximum extent permitted by law:
 - (a) acknowledges that the Lotsearch (nor any of its officers, employees or agents), nor any of its Third Party Content Supplier have any liability to it under or in connection with the

- Report or these Terms;
- (b) waives any right it may have to claim against Third Party Content Supplier in connection with the Report, or the negotiation of, entry into, performance of, or termination of these Terms; and
 - (c) releases each Third Party Content Supplier from any claim it may have otherwise had in connection with the Report, or the negotiation of, entry into, performance of, or termination of these Terms.
5. The End User acknowledges that any Third Party Supplier shall be entitled to plead the benefits conferred on it under clause 4, despite not being a party to these terms.
 6. End User must not remove any copyright notices, trade marks, digital rights management information, other embedded information, disclaimers or limitations from the Report or authorise any person to do so.
 7. End User acknowledges and agrees that Lotsearch and Third Party Content Suppliers retain ownership of all copyright, patent, design right (registered or unregistered), trade marks (registered or unregistered), database right or other data right, moral right or know how or any other intellectual property right in any Report or any other item, information or data included in or provided as part of a Report.
 8. To the extent permitted by law and subject to paragraph 9, all implied terms, representations and warranties whether statutory or otherwise relating to the subject matter of these Terms other than as expressly set out in these Terms are excluded.
 9. Subject to paragraph 6, Lotsearch excludes liability to End User for loss or damage of any kind, however caused, due to Lotsearch's negligence, breach of contract, breach of any law, in equity, under indemnities or otherwise, arising out of all acts, omissions and events whenever occurring.
 10. Lotsearch acknowledges that if, under applicable State, Territory or Commonwealth law, End User is a consumer certain rights may be conferred on End User which cannot be excluded, restricted or modified. If so, and if that law applies to Lotsearch, then, Lotsearch's liability is limited to the greater of an amount equal to the cost of resupplying the Report and the maximum extent permitted under applicable laws.
 11. Subject to paragraph 9, neither Lotsearch nor the End User is liable to the other for:
 - (a) any indirect, incidental, consequential, special or exemplary damages arising out of or in relation to the Report or these Terms; or
 - (b) any loss of profit, loss of revenue, loss of interest, loss of data, loss of goodwill or loss of business opportunities, business interruption arising directly or indirectly out of or in relation to the Report or these Terms,irrespective of how that liability arises including in contract or tort, liability under indemnity or for any other common law, equitable or statutory cause of action or otherwise.
 12. These Terms are subject to New South Wales law.