

Figure I.1.4.1

**Emergency Response Classifications
1 in 500 AEP event
North Richmond
Overview**

Legend

- Study area
- Emergency Response Classification**
- Flooded with overland escape
- Flooded with rising road
- Flood-affected, isolated and elevated (High flood island)
- Flood-affected, isolated and submerged (Low flood island)
- Not directly flood-affected

Report MHL3008

Redbank Creek Flood Study



**Manly
Hydraulics
Laboratory**



Figure I.1.4.3

**Emergency Response Classifications
1 in 500 AEP event
West of North Richmond**

Legend

- Study area
- Emergency Response Classification**
- Flooded with overland escape
- Flooded with rising road
- Flood-affected, isolated and elevated (High flood island)
- Flood-affected, isolated and submerged (Low flood island)
- Not directly flood-affected



Report MHL3008

Redbank Creek Flood Study



**Manly
Hydraulics
Laboratory**

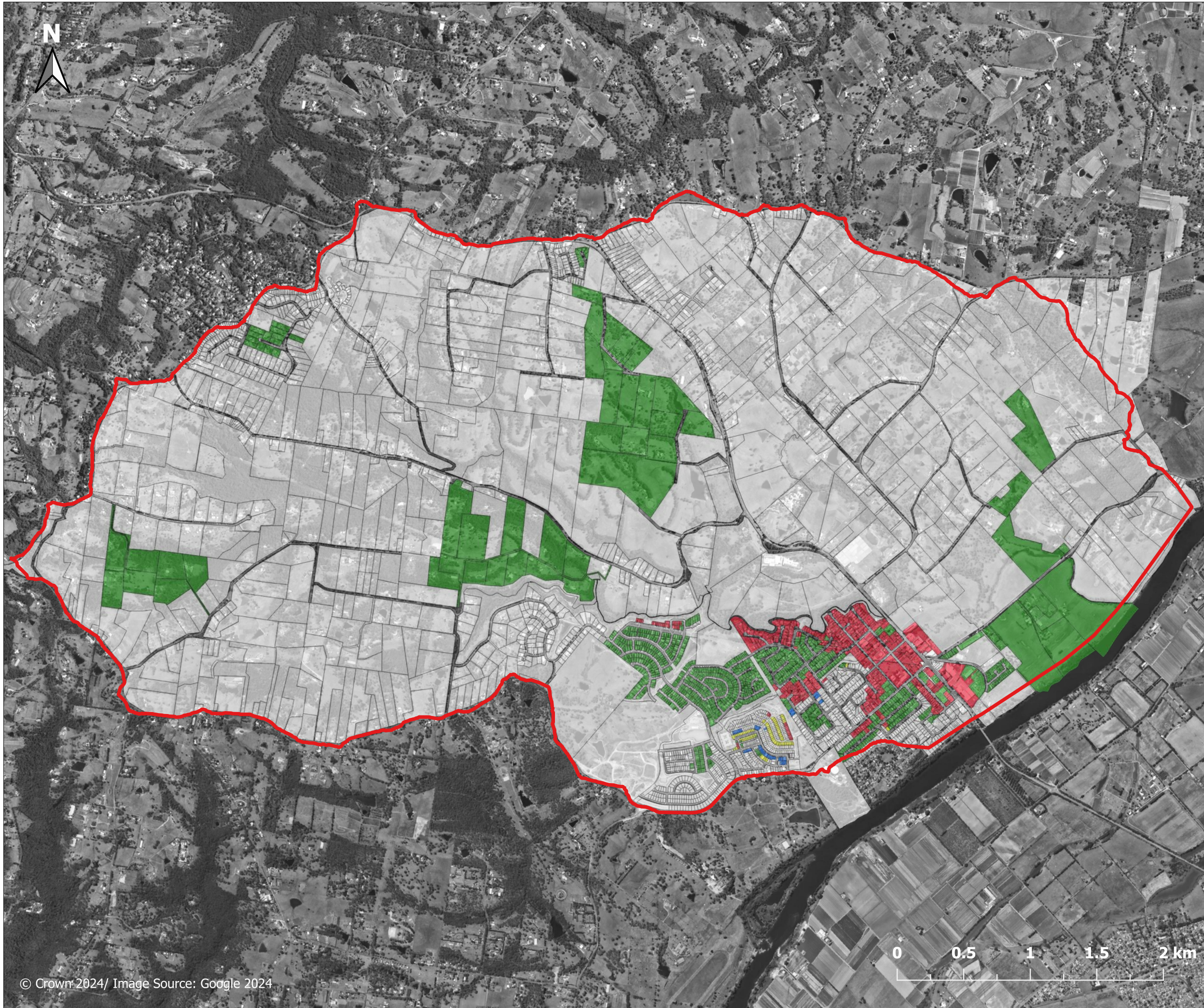


Figure I.1.5.1

**Emergency Response Classifications
PMF event
North Richmond
Overview**

Legend

- Study area
- Emergency Response Classification**
- Flooded with overland escape
- Flooded with rising road
- Flood-affected, isolated and elevated (High flood island)
- Flood-affected, isolated and submerged (Low flood island)
- Not directly flood-affected

Report MHL3008

Redbank Creek Flood Study



**Manly
Hydraulics
Laboratory**

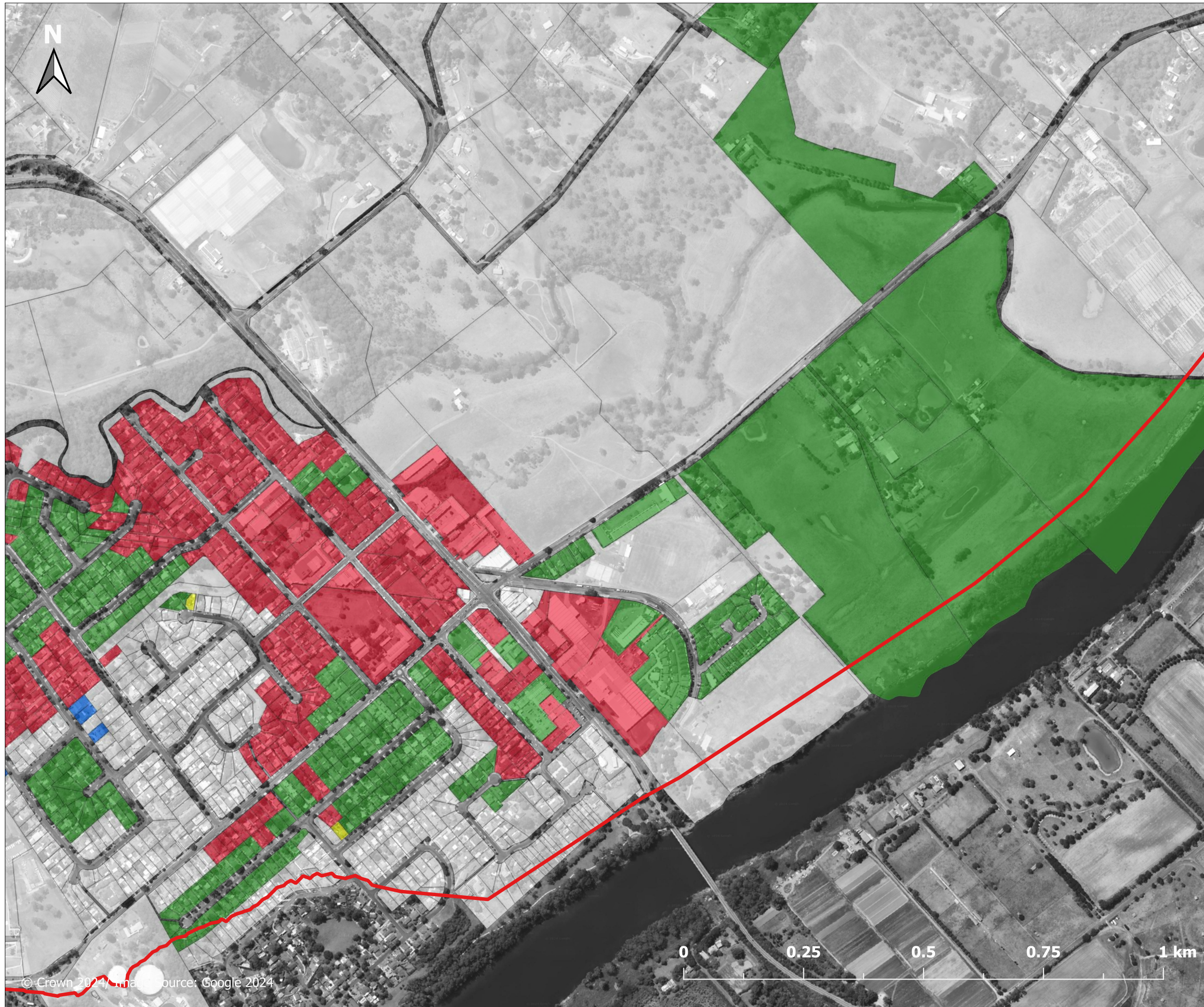
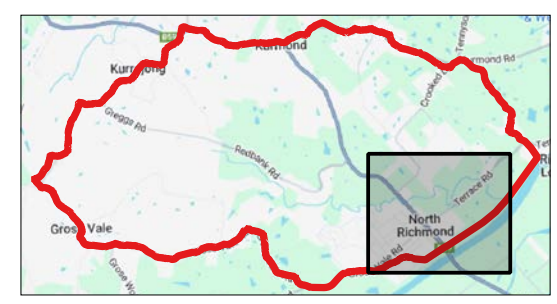


Figure I.1.5.2

**Emergency Response Classifications
PMF event
East of North Richmond**

Legend

- Study area
- Emergency Response Classification**
- Flooded with overland escape
- Flooded with rising road
- Flood-affected, isolated and elevated (High flood island)
- Flood-affected, isolated and submerged (Low flood island)
- Not directly flood-affected



Report MHL3008

Redbank Creek Flood Study



**Manly
Hydraulics
Laboratory**

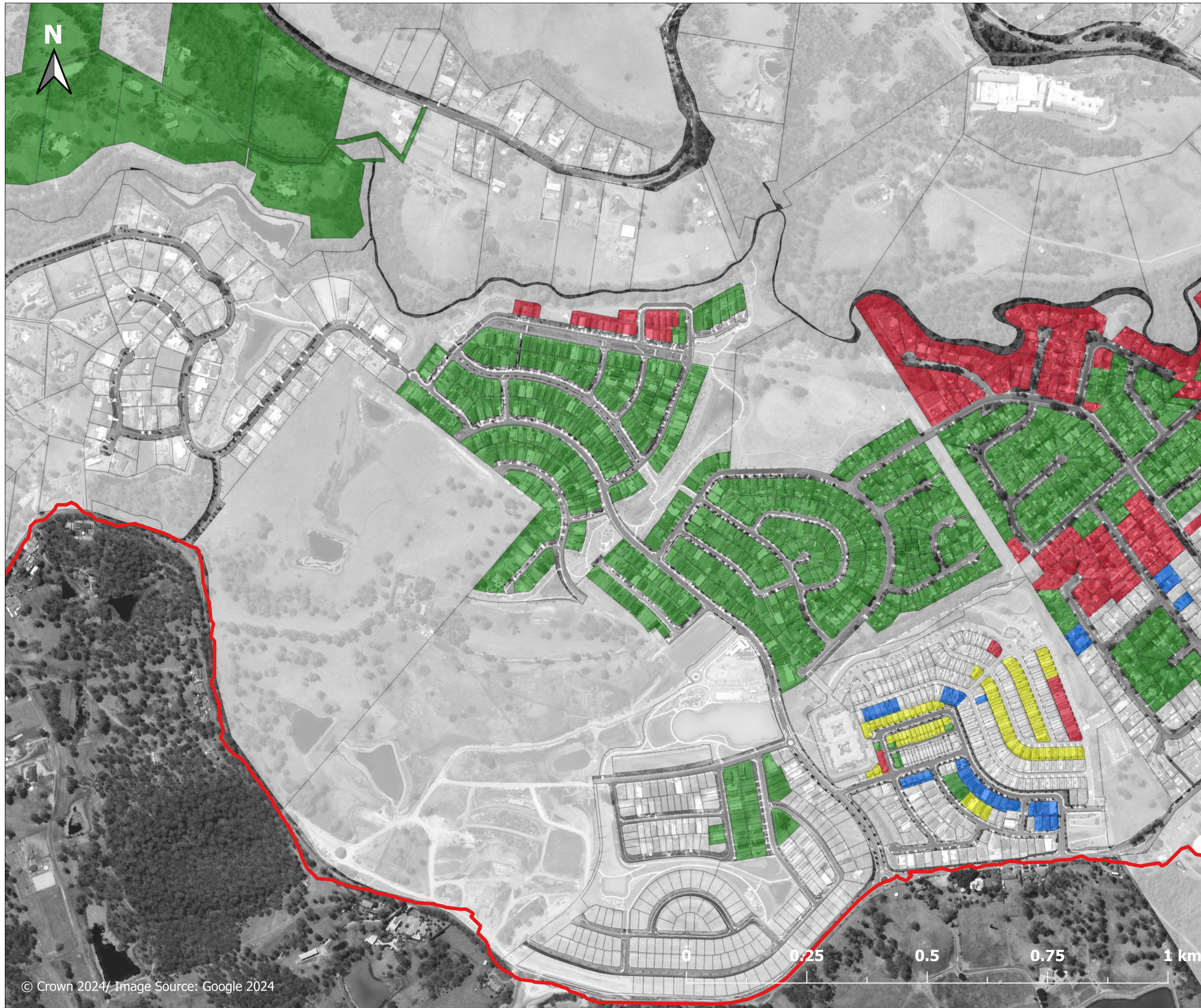


Figure I.1.5.3

**Emergency Response Classifications
PMF event
West of North Richmond**

Legend

- Study area
- Emergency Response Classification**
- Flooded with overland escape
- Flooded with rising road
- Flood-affected, isolated and elevated (High flood island)
- Flood-affected, isolated and submerged (Low flood island)
- Not directly flood-affected



Report MHL3008

Redbank Creek Flood Study



**Manly
Hydraulics
Laboratory**

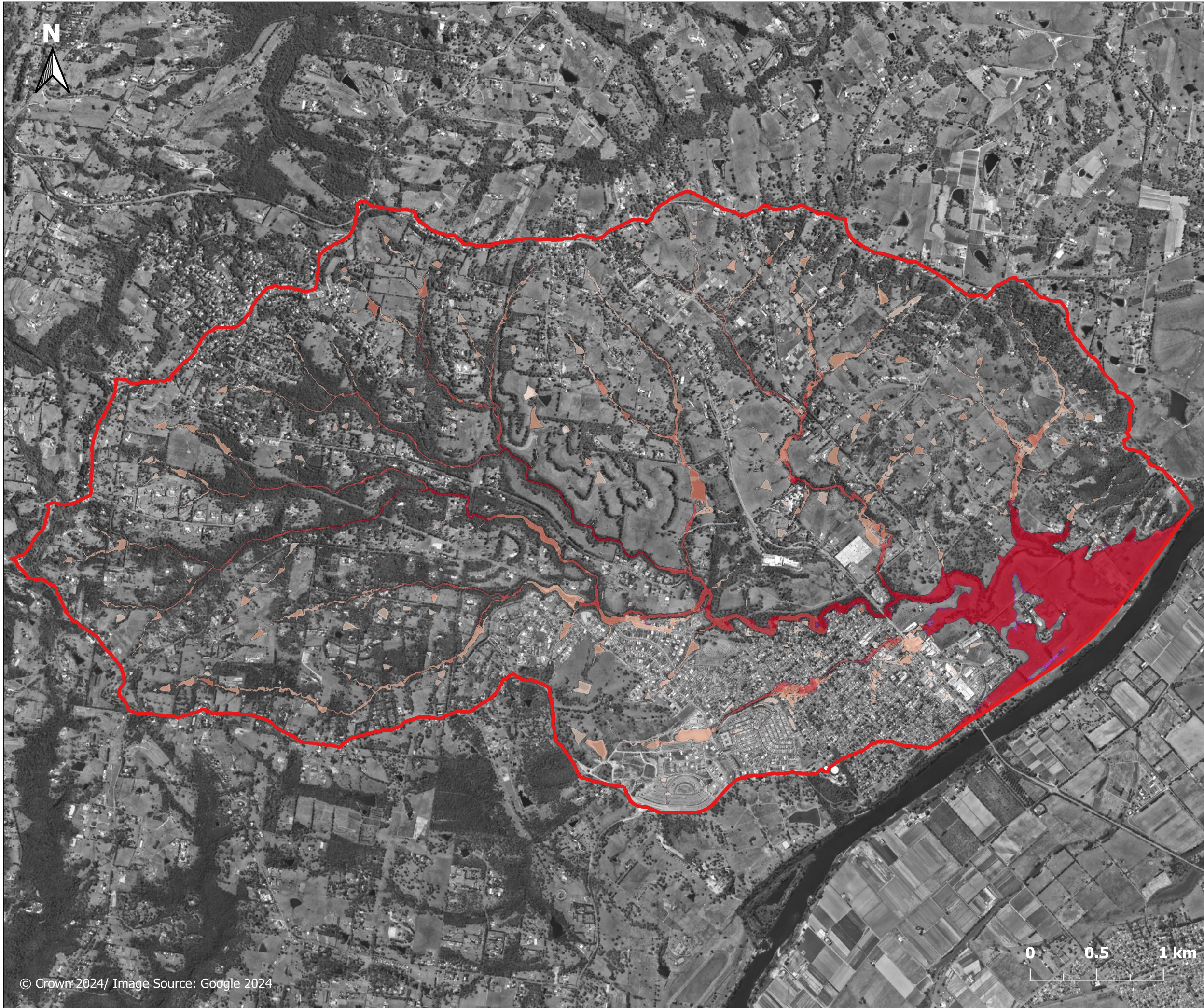


Figure J.1.1
Climate change sensitivity - 2040
North Richmond
Overview

- Legend**
- Study area
 - Afflux (m)**
 - < -0.50
 - 0.50 to -0.20
 - 0.20 to -0.10
 - 0.10 to -0.05
 - 0.05 to -0.02
 - 0.02 to -0.01
 - 0.01 to 0.01
 - 0.01 to 0.02
 - 0.02 to 0.05
 - 0.05 to 0.10
 - 0.10 to 0.20
 - 0.20 to 0.50
 - > 0.50
 - Was wet now dry
 - Was dry now wet

© Crown 2024/ Image Source: Google 2024

0 0.5 1 km

Report MHL3008
Redbank Creek Flood
Study



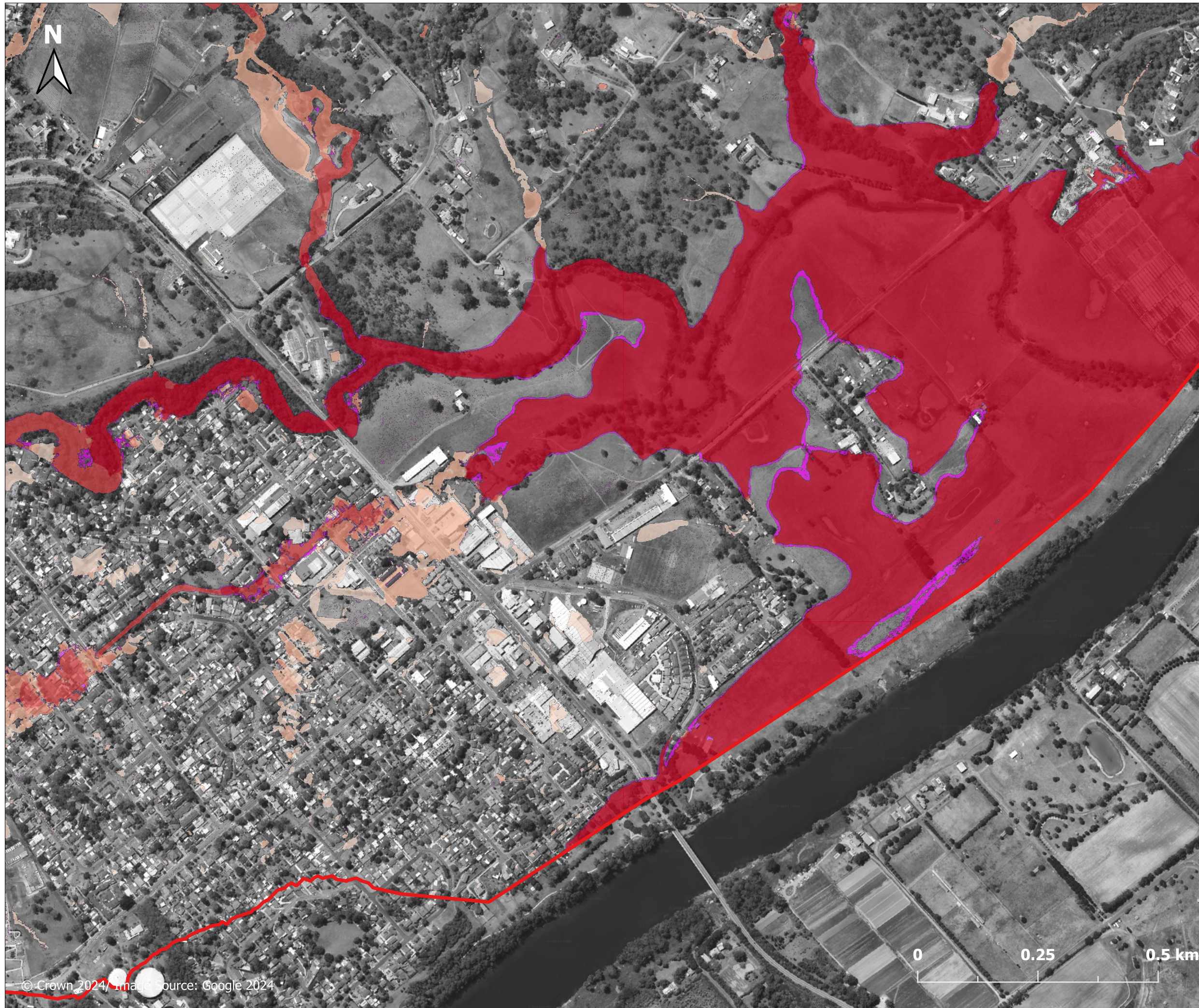
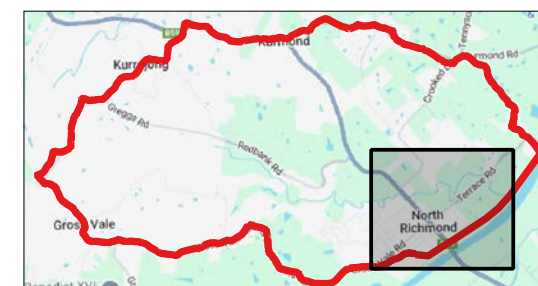


Figure J.1.2

**Climate change sensitivity - 2040
East of North Richmond**

Legend

- Study area
- Afflux (m)**
- < -0.50
- 0.50 to -0.20
- 0.20 to -0.10
- 0.10 to -0.05
- 0.05 to -0.02
- 0.02 to -0.01
- 0.01 to 0.01
- 0.01 to 0.02
- 0.02 to 0.05
- 0.05 to 0.10
- 0.10 to 0.20
- 0.20 to 0.50
- > 0.50
- Was wet now dry
- Was dry now wet



Report MHL3008

Redbank Creek Flood Study



**Manly
Hydraulics
Laboratory**



Figure J.1.3
Climate change sensitivity - 2040
West of North Richmond

- Legend**
- Study area
 - Afflux (m)**
 - < -0.50
 - 0.50 to -0.20
 - 0.20 to -0.10
 - 0.10 to -0.05
 - 0.05 to -0.02
 - 0.02 to -0.01
 - 0.01 to 0.01
 - 0.01 to 0.02
 - 0.02 to 0.05
 - 0.05 to 0.10
 - 0.10 to 0.20
 - 0.20 to 0.50
 - > 0.50
 - Was wet now dry
 - Was dry now wet



Report MHL3008
Redbank Creek Flood Study



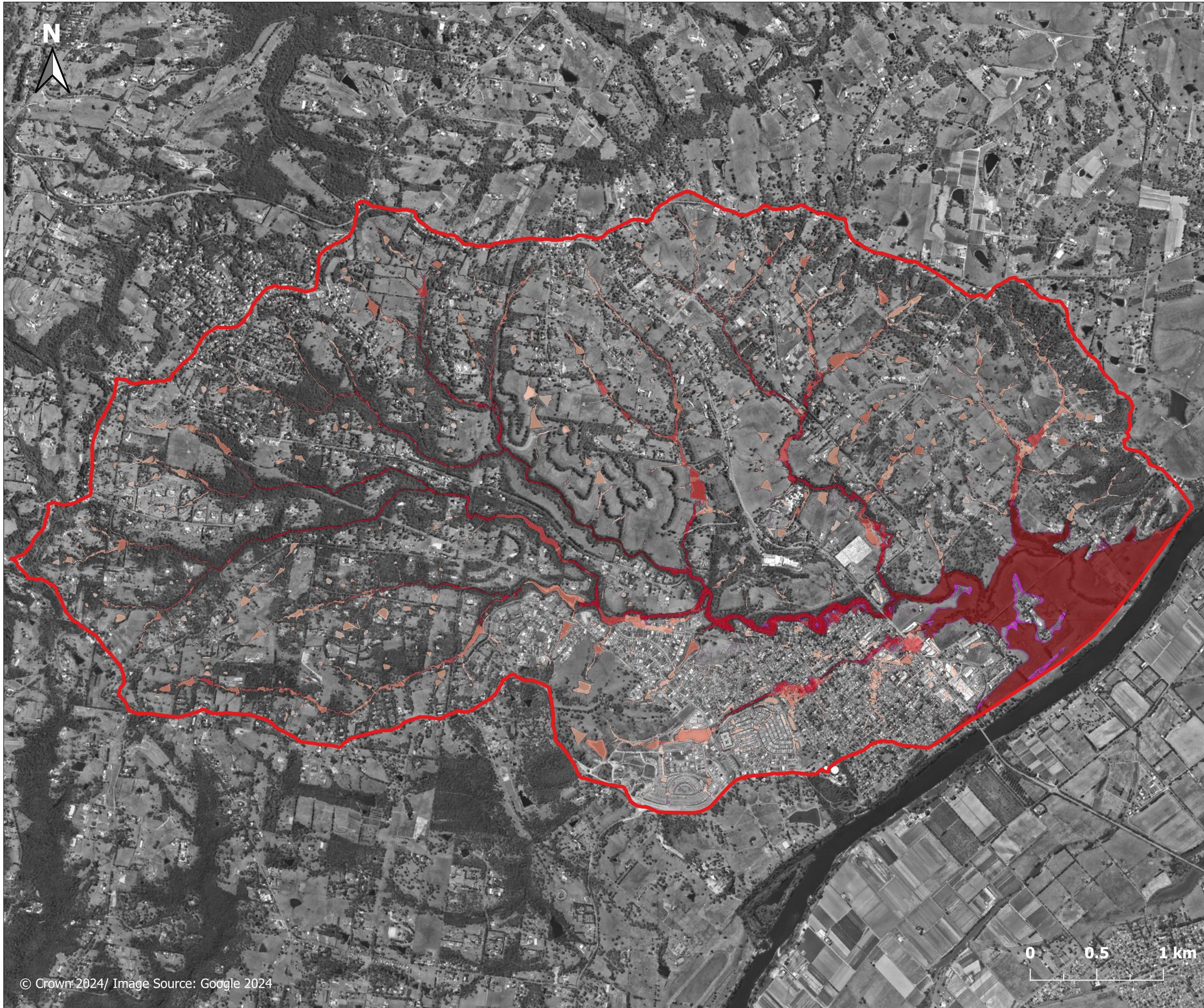


Figure J.2.1
Climate change sensitivity - 2090
North Richmond
Overview

- Legend**
- Study area
 - Afflux (m)**
 - < -0.50
 - 0.50 to -0.20
 - 0.20 to -0.10
 - 0.10 to -0.05
 - 0.05 to -0.02
 - 0.02 to -0.01
 - 0.01 to 0.01
 - 0.01 to 0.02
 - 0.02 to 0.05
 - 0.05 to 0.10
 - 0.10 to 0.20
 - 0.20 to 0.50
 - > 0.50
 - Was wet now dry
 - Was dry now wet

© Crown 2024/ Image Source: Google 2024

0 0.5 1 km

Report MHL3008
Redbank Creek Flood
Study



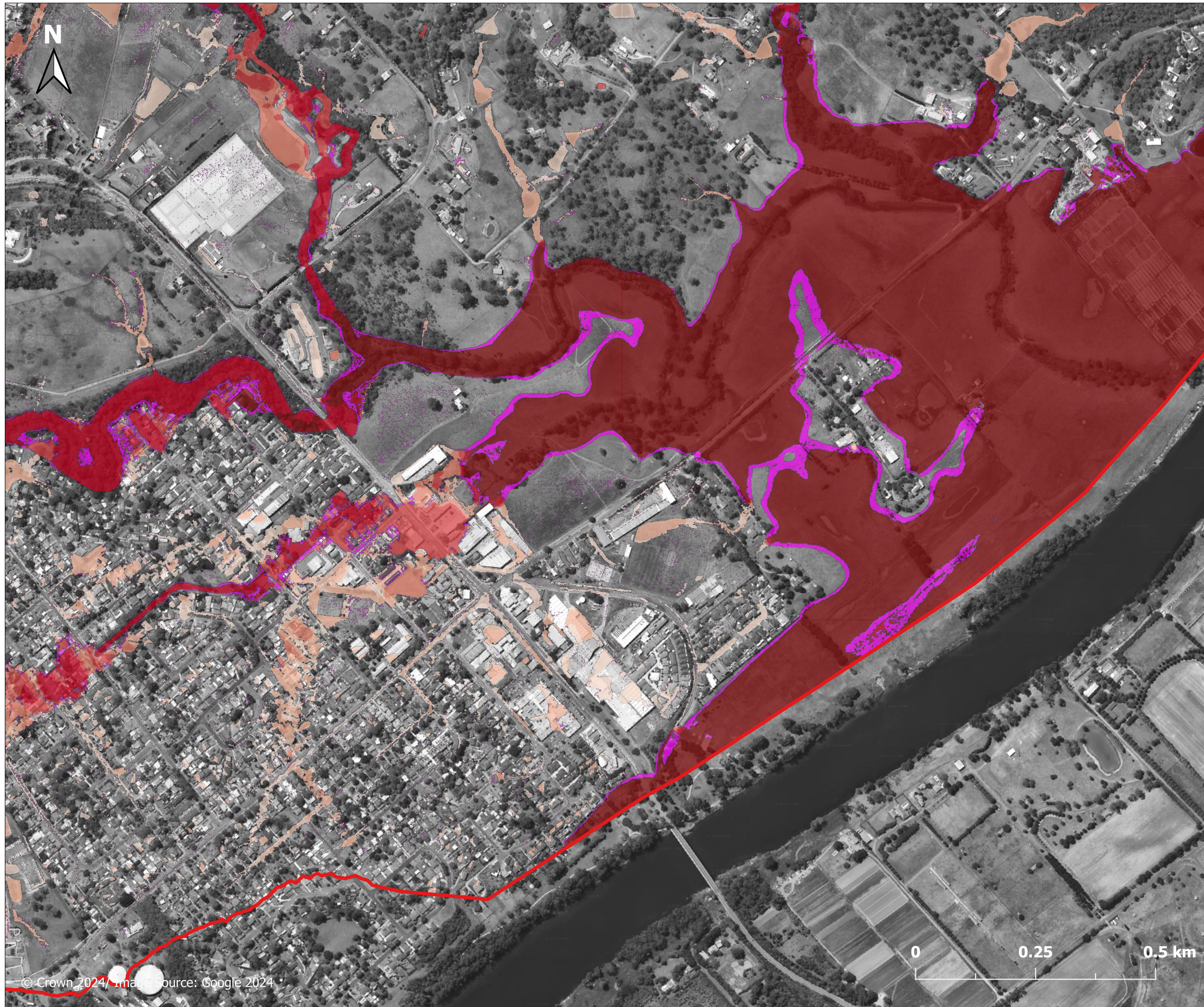
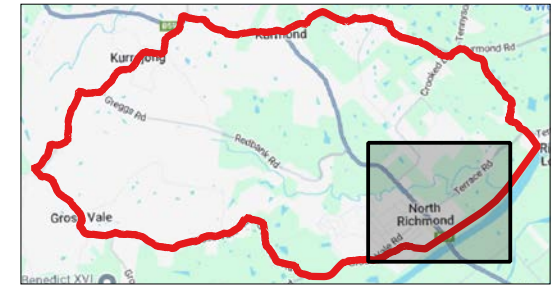


Figure J.2.2
Climate change sensitivity - 2090
East of North Richmond

- Legend**
- Study area
 - Afflux (m)**
 - < -0.50
 - 0.50 to -0.20
 - 0.20 to -0.10
 - 0.10 to -0.05
 - 0.05 to -0.02
 - 0.02 to -0.01
 - 0.01 to 0.01
 - 0.01 to 0.02
 - 0.02 to 0.05
 - 0.05 to 0.10
 - 0.10 to 0.20
 - 0.20 to 0.50
 - > 0.50
 - Was wet now dry
 - Was dry now wet



Report MHL3008
Redbank Creek Flood Study



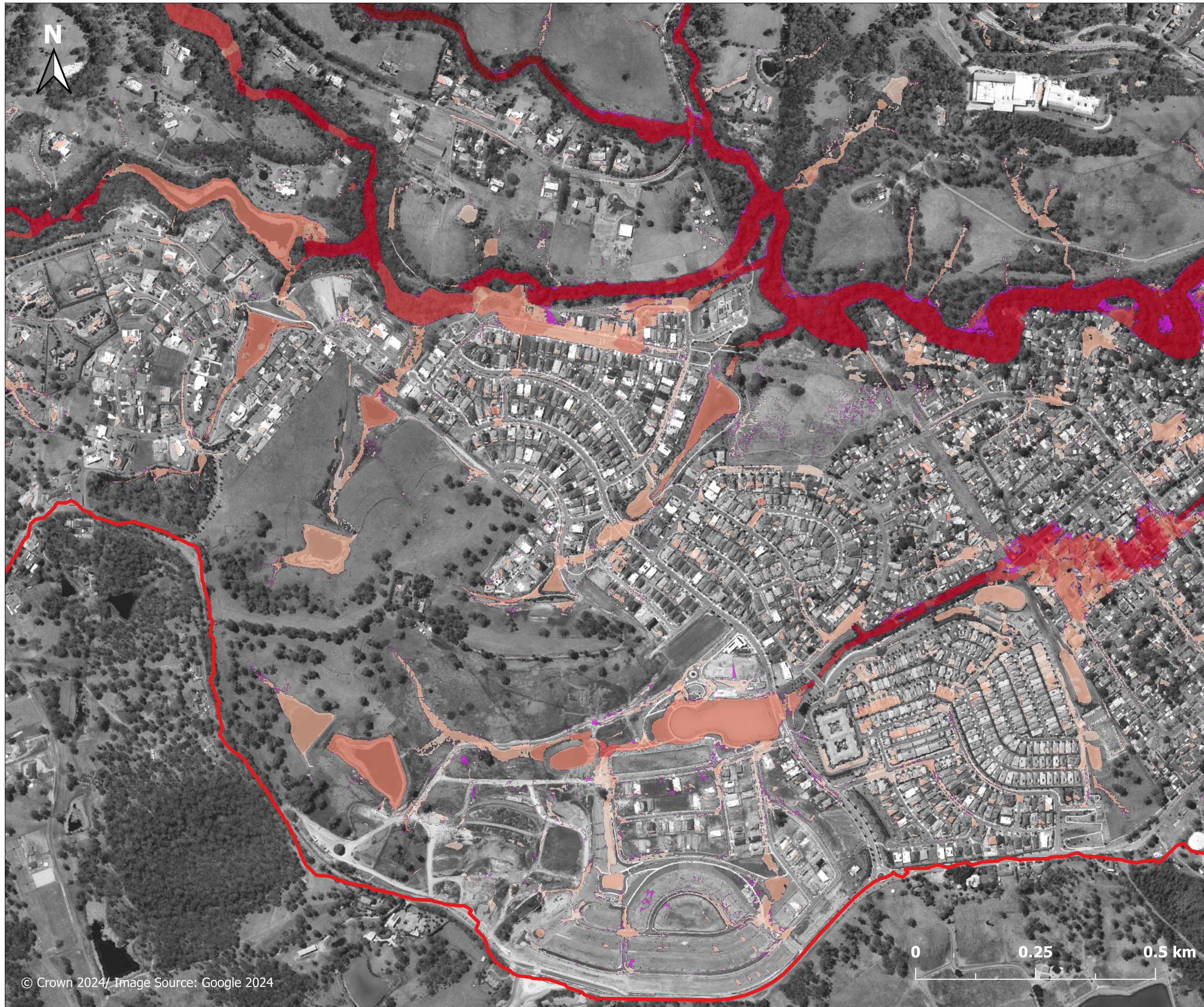


Figure J.2.3
Climate change sensitivity - 2090
West of North Richmond

- Legend**
- Study area
 - Afflux (m)**
 - < -0.50
 - 0.50 to -0.20
 - 0.20 to -0.10
 - 0.10 to -0.05
 - 0.05 to -0.02
 - 0.02 to -0.01
 - 0.01 to 0.01
 - 0.01 to 0.02
 - 0.02 to 0.05
 - 0.05 to 0.10
 - 0.10 to 0.20
 - 0.20 to 0.50
 - > 0.50
 - Was wet now dry
 - Was dry now wet



Report MHL3008
Redbank Creek Flood Study



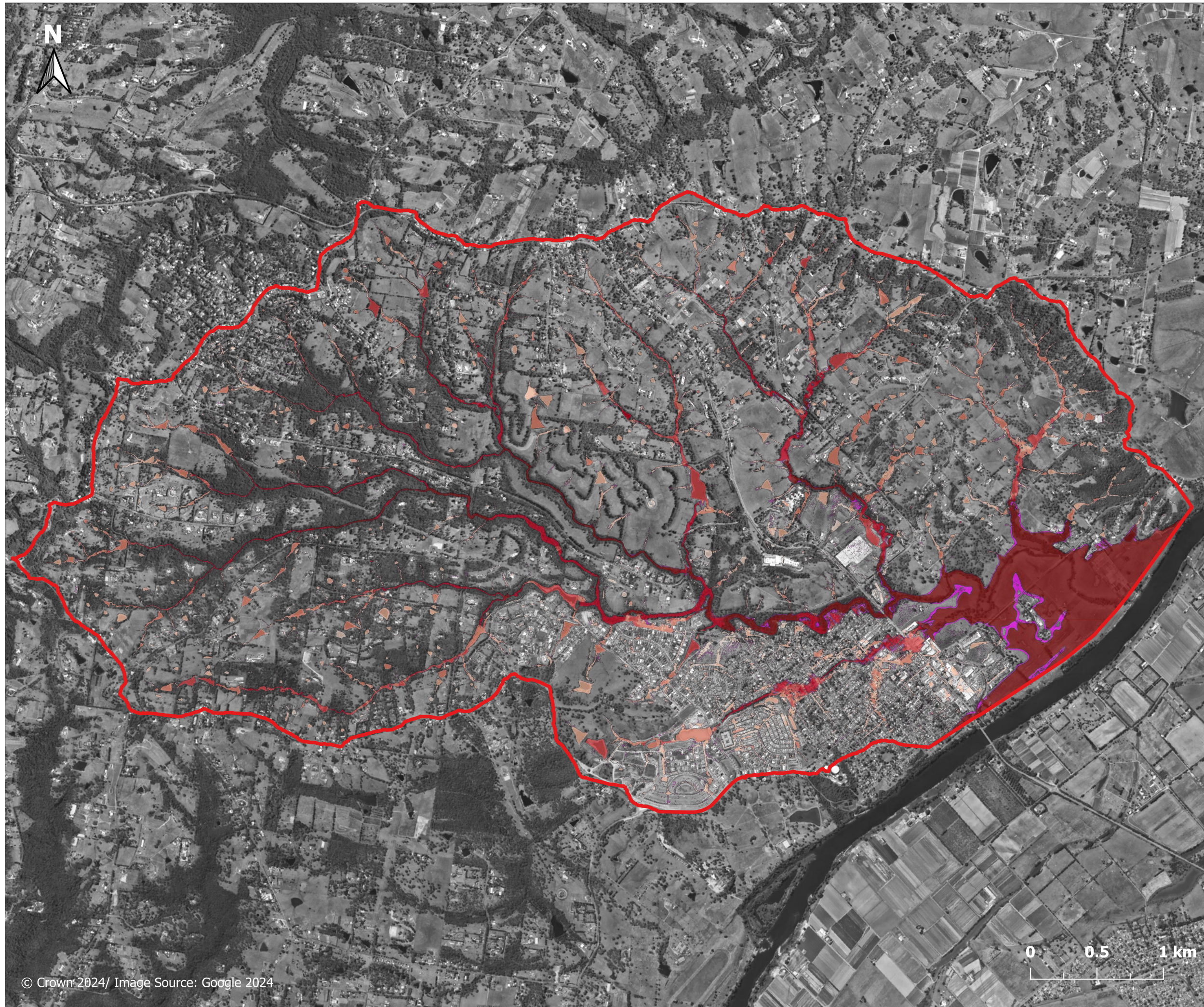


Figure J.3.1
Climate change sensitivity - 2100
North Richmond
Overview

- Legend**
- Study area
 - Afflux (m)**
 - < -0.50
 - 0.50 to -0.20
 - 0.20 to -0.10
 - 0.10 to -0.05
 - 0.05 to -0.02
 - 0.02 to -0.01
 - 0.01 to 0.01
 - 0.01 to 0.02
 - 0.02 to 0.05
 - 0.05 to 0.10
 - 0.10 to 0.20
 - 0.20 to 0.50
 - > 0.50
 - Was wet now dry
 - Was dry now wet

© Crown 2024/ Image Source: Google 2024

0 0.5 1 km

Report MHL3008
Redbank Creek Flood
Study



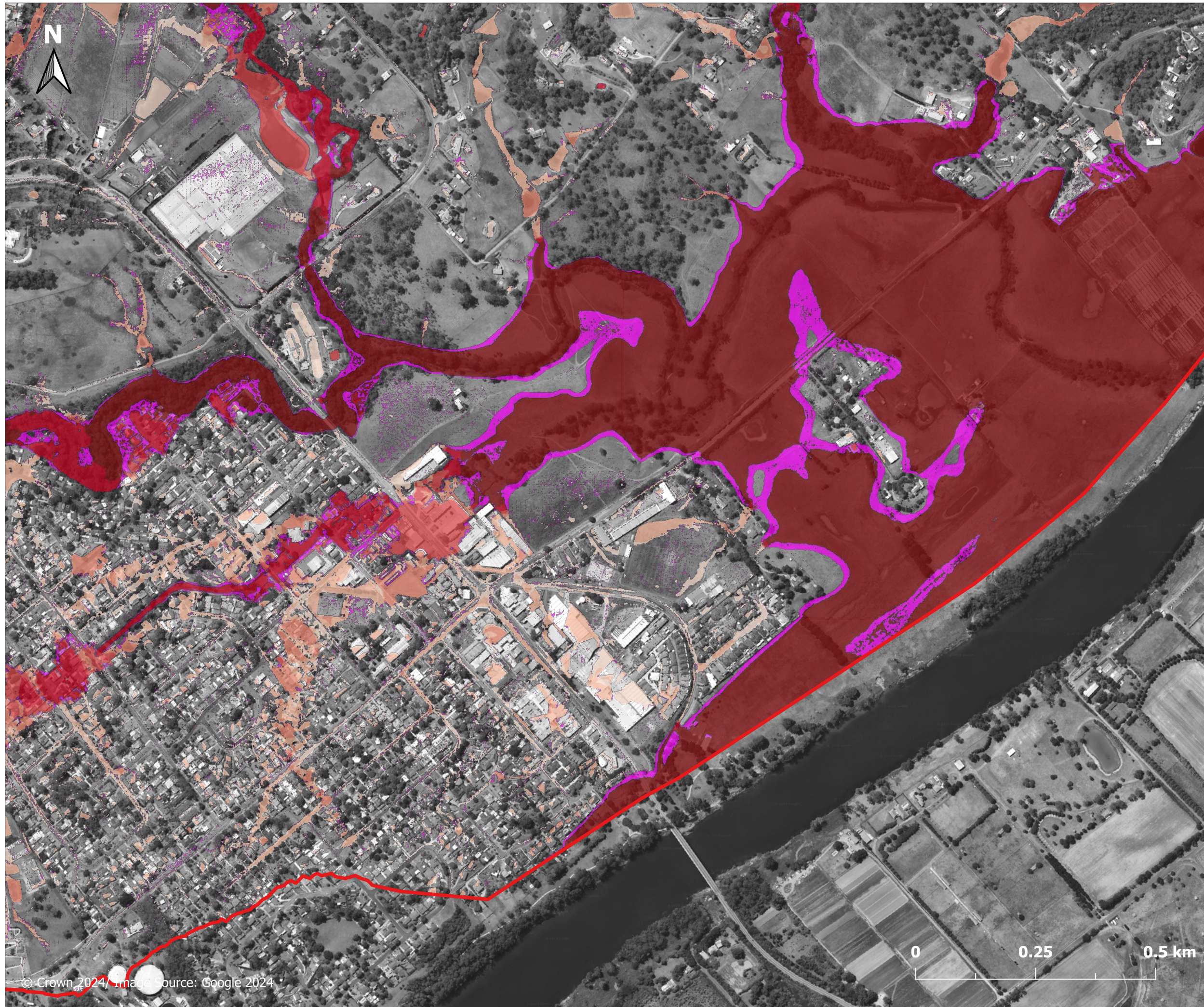
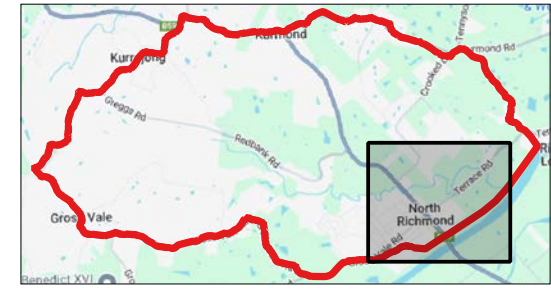


Figure J.3.2
Climate change sensitivity - 2100
East of North Richmond

- Legend**
- Study area
 - Afflux (m)**
 - < -0.50
 - 0.50 to -0.20
 - 0.20 to -0.10
 - 0.10 to -0.05
 - 0.05 to -0.02
 - 0.02 to -0.01
 - 0.01 to 0.01
 - 0.01 to 0.02
 - 0.02 to 0.05
 - 0.05 to 0.10
 - 0.10 to 0.20
 - 0.20 to 0.50
 - > 0.50
 - Was wet now dry
 - Was dry now wet



Report MHL3008
Redbank Creek Flood Study



© Crown 2024. Image source: Google 2024

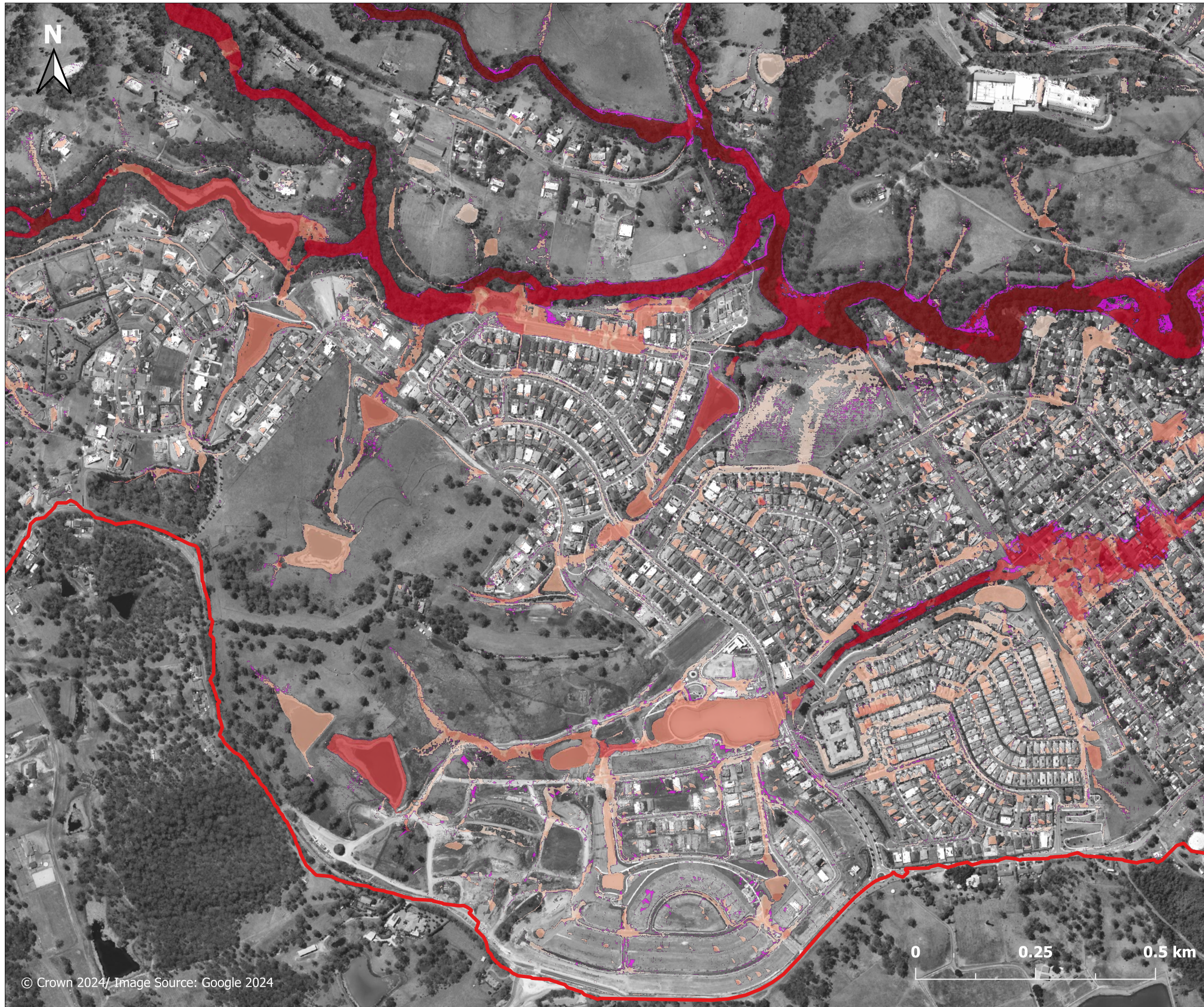


Figure J.3.3
Climate change sensitivity - 2100
West of North Richmond

- Legend**
- Study area
 - Afflux (m)**
 - < -0.50
 - 0.50 to -0.20
 - 0.20 to -0.10
 - 0.10 to -0.05
 - 0.05 to -0.02
 - 0.02 to -0.01
 - 0.01 to 0.01
 - 0.01 to 0.02
 - 0.02 to 0.05
 - 0.05 to 0.10
 - 0.10 to 0.20
 - 0.20 to 0.50
 - > 0.50
 - Was wet now dry
 - Was dry now wet



Report MHL3008
Redbank Creek Flood Study



