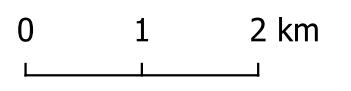




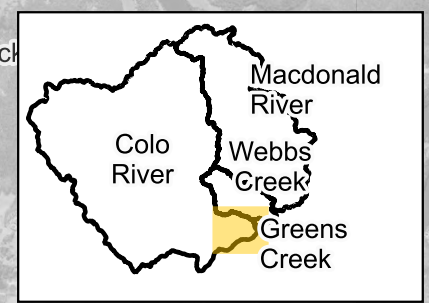
RG-00-502
Colo River
High Blockage
Sensitivity 1%AEP
Map 2 of 5

- Study Area
- Watercourse

- Water Level Difference (m)
- <= -0.2
 - 0.2 - -0.1
 - 0.1 - -0.05
 - 0.05 - -0.01
 - 0.01 - 0.01
 - 0.01 - 0.05
 - 0.05 - 0.1
 - 0.1 - 0.2
 - > 0.2
 - Was wet, now dry
 - Was dry now wet



Job Number: J1382
Scale : 1:65000@A3
Date : 20/11/2024
Revision : 01
Created by : PC
Coordinate System : GDA2020 /
MGA zone 56

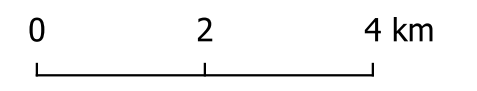




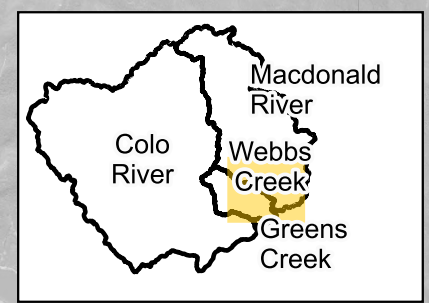
**RG-00-502
Macdonald River
High Blockage
Sensitivity 1%AEP
Map 3 of 5**

- Study Area
- Watercourse

- Water Level Difference (m)
- <= -0.2
 - 0.2 - -0.1
 - 0.1 - -0.05
 - 0.05 - -0.01
 - 0.01 - 0.01
 - 0.01 - 0.05
 - 0.05 - 0.1
 - 0.1 - 0.2
 - > 0.2
 - Was wet, now dry
 - Was dry now wet



Job Number: J1382
Scale : 1:90000@A3
Date : 20/11/2024
Revision : 01
Created by : PC
Coordinate System : GDA2020 /
MGA zone 56

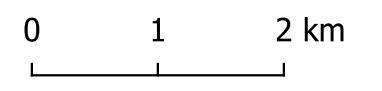




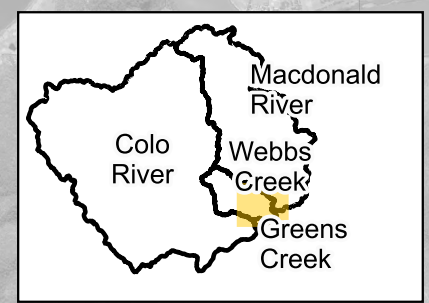
RG-00-502
Webbs Creek
High Blockage
Sensitivity 1%AEP
Map 4 of 5

- Study Area
- Watercourse

- Water Level Difference (m)
- <= -0.2
 - 0.2 - -0.1
 - 0.1 - -0.05
 - 0.05 - -0.01
 - 0.01 - 0.01
 - 0.01 - 0.05
 - 0.05 - 0.1
 - 0.1 - 0.2
 - > 0.2
 - Was wet, now dry
 - Was dry now wet



Job Number: J1382
Scale : 1:60000@A3
Date : 20/11/2024
Revision : 01
Created by : PC
Coordinate System : GDA2020 /
MGA zone 56

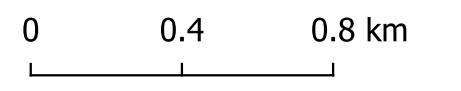




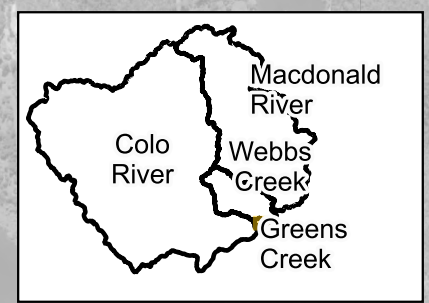
**RG-00-502
Greens Creek
High Blockage
Sensitivity 1%AEP
Map 5 of 5**

- Study Area
- Watercourse

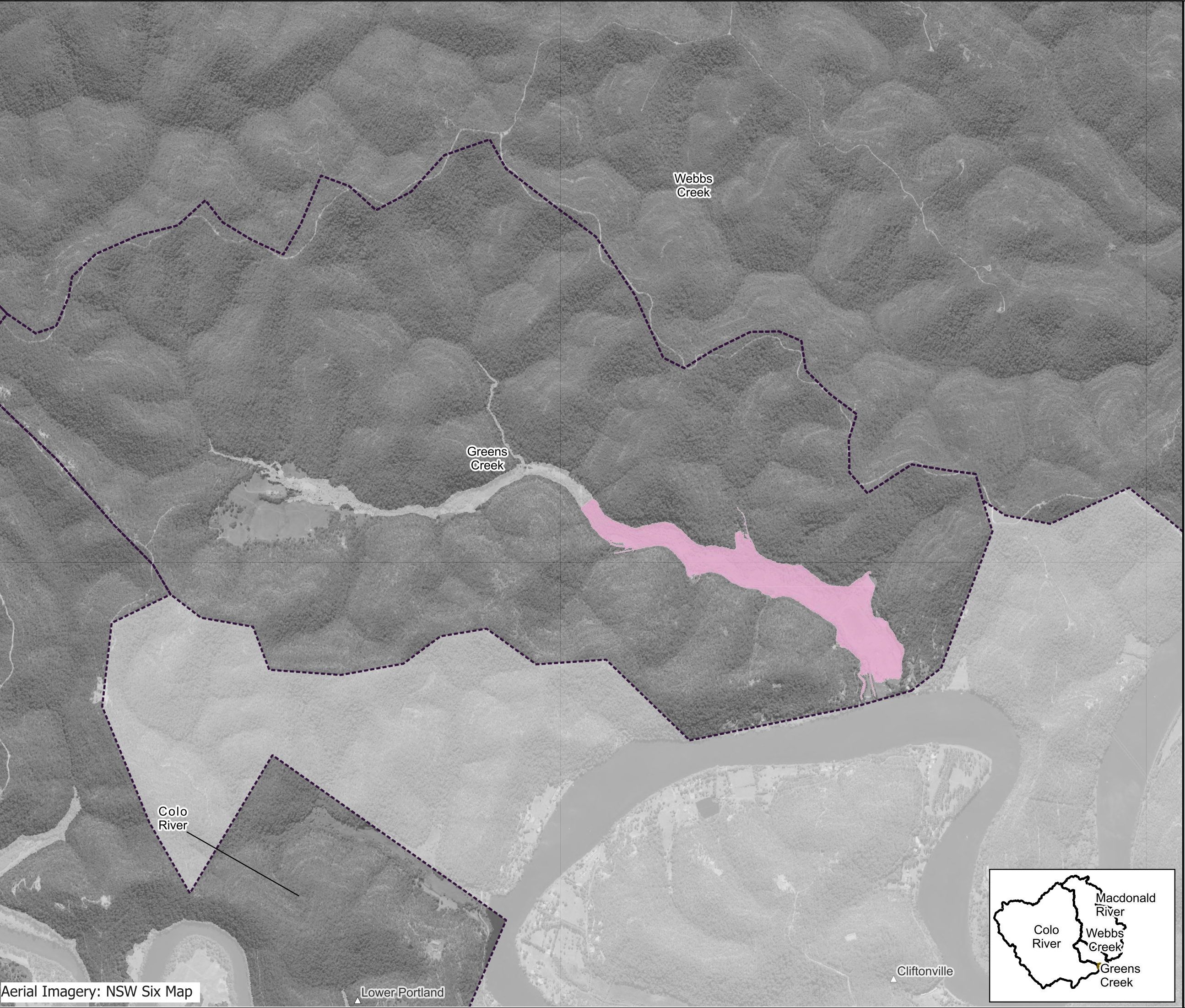
- Water Level Difference (m)
- <= -0.2
 - 0.2 - -0.1
 - 0.1 - -0.05
 - 0.05 - -0.01
 - 0.01 - 0.01
 - 0.01 - 0.05
 - 0.05 - 0.1
 - 0.1 - 0.2
 - > 0.2
 - Was wet, now dry
 - Was dry now wet



Job Number: J1382
Scale : 1:20000@A3
Date : 20/11/2024
Revision : 01
Created by : PC
Coordinate System : GDA2020 /
MGA zone 56



Aerial Imagery: NSW Six Map





RG-00-503
Study Area
Low Blockage
Sensitivity 20%AEP
Map 1 of 5

Study Area
 Watercourse

Water Level Difference (m)

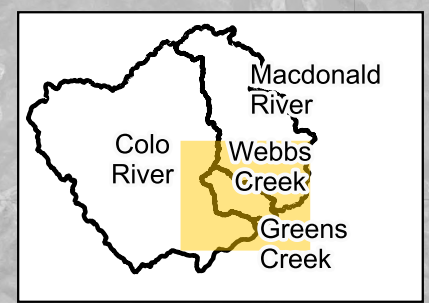
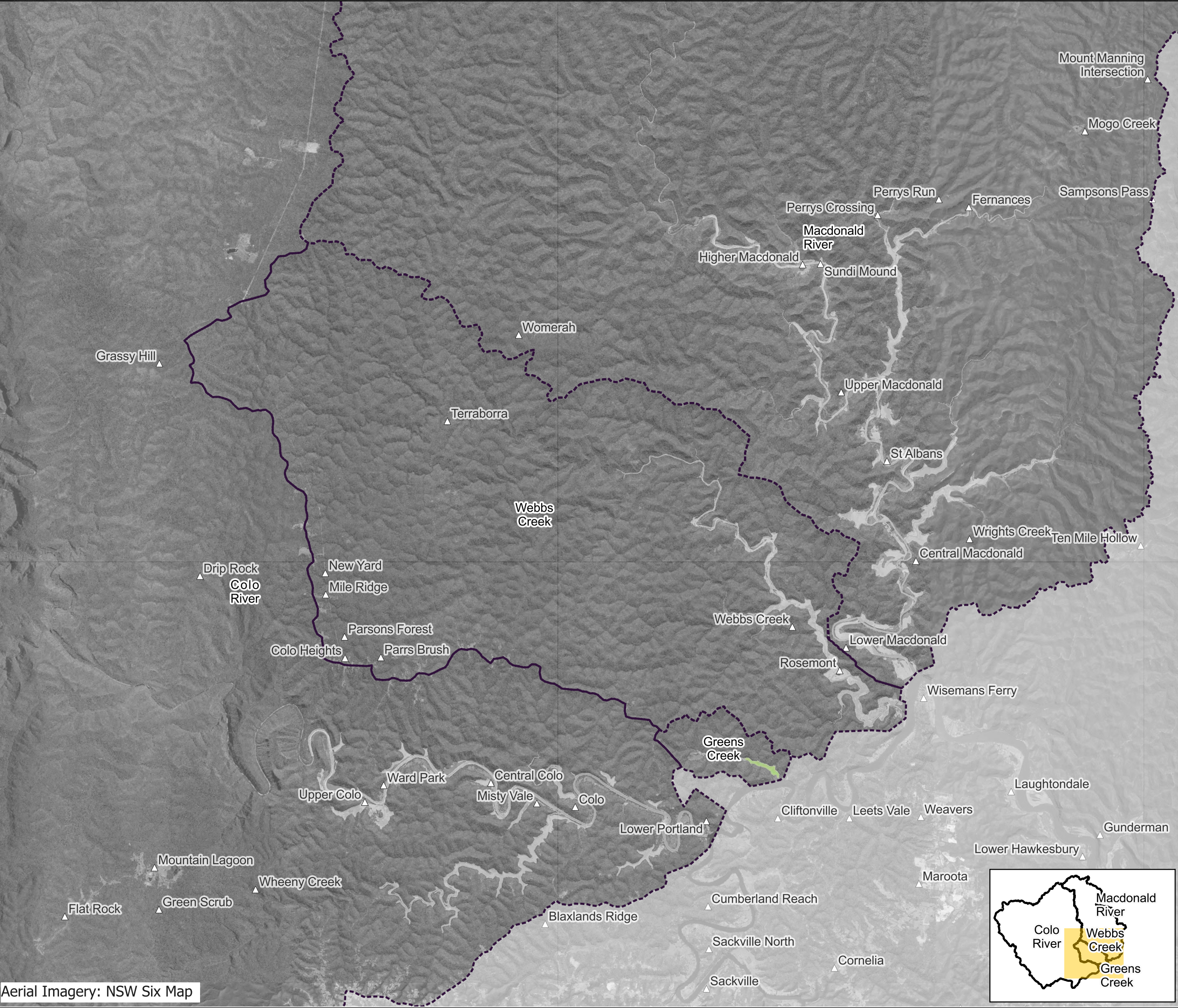
	<= -0.2
	-0.2 - -0.1
	-0.1 - -0.05
	-0.05 - -0.01
	-0.01 - 0.01
	0.01 - 0.05
	0.05 - 0.1
	0.1 - 0.2
	> 0.2
	Was wet, now dry
	Was dry now wet

0 3 6 km

Job Number: J1382
Scale : 1:150000@A3
Date : 20/11/2024
Revision : 01
Created by : PC
Coordinate System : GDA2020 /
MGA zone 56



Aerial Imagery: NSW Six Map





RG-00-503
Colo River
Low Blockage
Sensitivity 20%AEP
Map 2 of 5

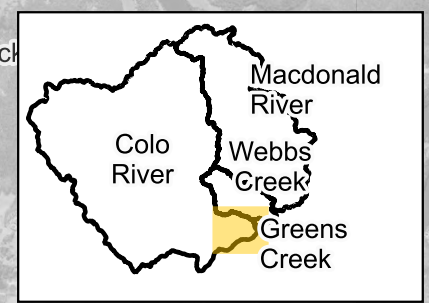
Study Area
 Watercourse

Water Level Difference (m)

- <= -0.2
- 0.2 - -0.1
- 0.1 - -0.05
- 0.05 - -0.01
- 0.01 - 0.01
- 0.01 - 0.05
- 0.05 - 0.1
- 0.1 - 0.2
- > 0.2
- Was wet, now dry
- Was dry now wet

0 1 2 km

Job Number: J1382
Scale : 1:65000@A3
Date : 20/11/2024
Revision : 01
Created by : PC
Coordinate System : GDA2020 /
MGA zone 56

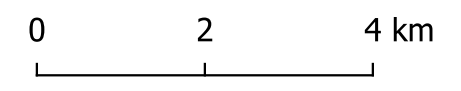




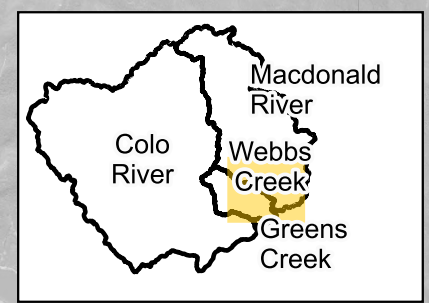
RG-00-503
Macdonald River
Low Blockage
Sensitivity 20%AEP
Map 3 of 5

- Study Area
- Watercourse

- Water Level Difference (m)
- <= -0.2
 - 0.2 - -0.1
 - 0.1 - -0.05
 - 0.05 - -0.01
 - 0.01 - 0.01
 - 0.01 - 0.05
 - 0.05 - 0.1
 - 0.1 - 0.2
 - > 0.2
 - Was wet, now dry
 - Was dry now wet



Job Number: J1382
Scale : 1:90000@A3
Date : 20/11/2024
Revision : 01
Created by : PC
Coordinate System : GDA2020 /
MGA zone 56

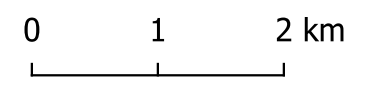




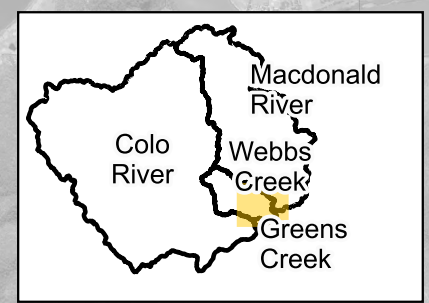
RG-00-503
Webbs Creek
Low Blockage
Sensitivity 20%AEP
Map 4 of 5

- Study Area
- Watercourse

- Water Level Difference (m)
- <= -0.2
 - 0.2 - -0.1
 - 0.1 - -0.05
 - 0.05 - -0.01
 - 0.01 - 0.01
 - 0.01 - 0.05
 - 0.05 - 0.1
 - 0.1 - 0.2
 - > 0.2
 - Was wet, now dry
 - Was dry now wet



Job Number: J1382
Scale : 1:60000@A3
Date : 20/11/2024
Revision : 01
Created by : PC
Coordinate System : GDA2020 /
MGA zone 56

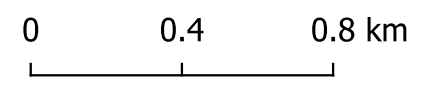




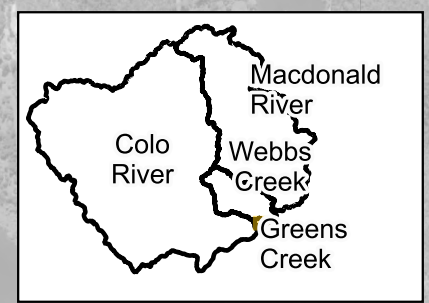
RG-00-503
Greens Creek
Low Blockage
Sensitivity 20%AEP
Map 5 of 5

- Study Area
- Watercourse

- Water Level Difference (m)
- <= -0.2
 - 0.2 - -0.1
 - 0.1 - -0.05
 - 0.05 - -0.01
 - 0.01 - 0.01
 - 0.01 - 0.05
 - 0.05 - 0.1
 - 0.1 - 0.2
 - > 0.2
 - Was wet, now dry
 - Was dry now wet



Job Number: J1382
Scale : 1:20000@A3
Date : 20/11/2024
Revision : 01
Created by : PC
Coordinate System : GDA2020 /
MGA zone 56



Aerial Imagery: NSW Six Map

Lower Portland

Cliftonville

Colo River

Webb's Creek

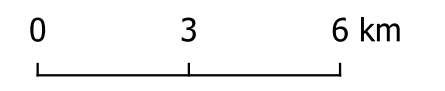
Greens Creek



**RG-00-504
Study Area
Low Blockage
Sensitivity 1% AEP
Map 1 of 5**

- Study Area
- Watercourse

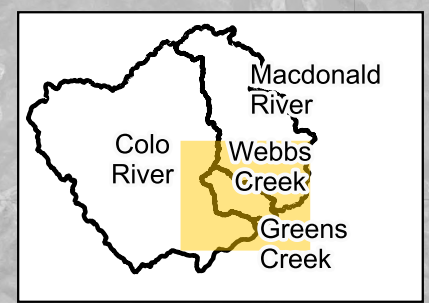
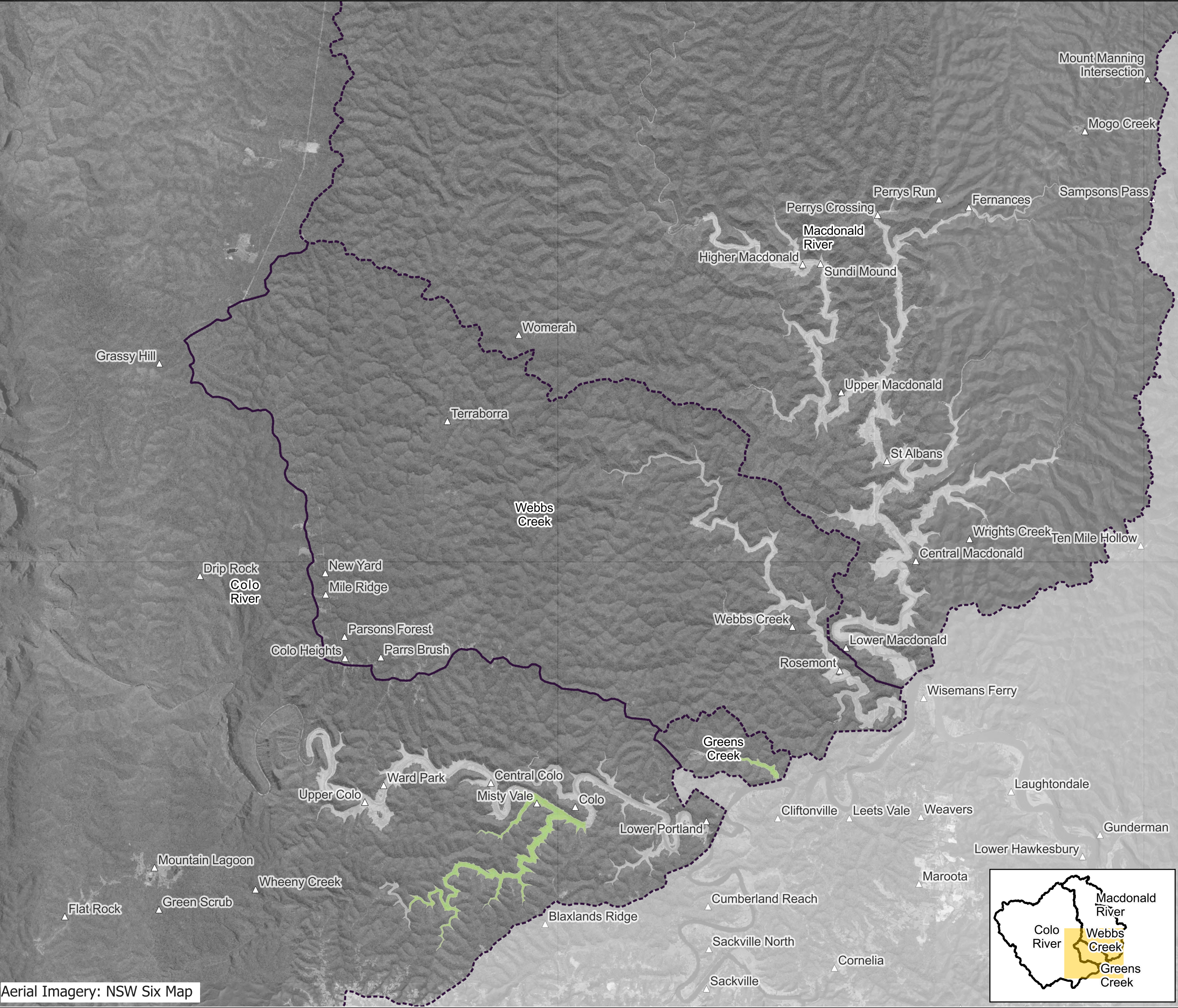
- Water Level Difference (m)
- <= -0.2
 - 0.2 - -0.1
 - 0.1 - -0.05
 - 0.05 - -0.01
 - 0.01 - 0.01
 - 0.01 - 0.05
 - 0.05 - 0.1
 - 0.1 - 0.2
 - > 0.2
 - Was wet, now dry
 - Was dry now wet



Job Number: J1382
Scale : 1:150000@A3
Date : 20/11/2024
Revision : 01
Created by : PC
Coordinate System : GDA2020 /
MGA zone 56



Aerial Imagery: NSW Six Map

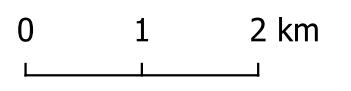




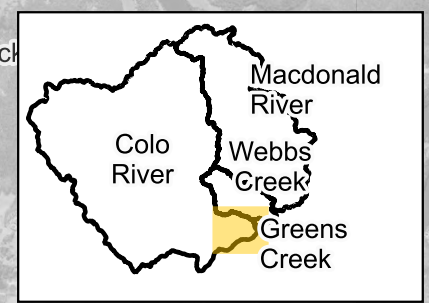
**RG-00-504
Colo River
Low Blockage
Sensitivity 1%AEP
Map 2 of 5**

- Study Area
- Watercourse

- Water Level Difference (m)**
- <= -0.2
 - 0.2 - -0.1
 - 0.1 - -0.05
 - 0.05 - -0.01
 - 0.01 - 0.01
 - 0.01 - 0.05
 - 0.05 - 0.1
 - 0.1 - 0.2
 - > 0.2
 - Was wet, now dry
 - Was dry now wet



Job Number: J1382
Scale : 1:65000@A3
Date : 20/11/2024
Revision : 01
Created by : PC
Coordinate System : GDA2020 /
MGA zone 56

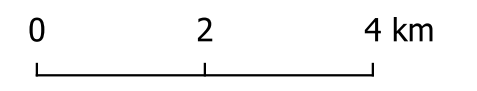




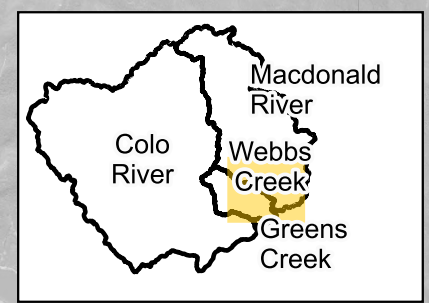
RG-00-504
Macdonald River
Low Blockage
Sensitivity 1%AEP
Map 3 of 5

- Study Area
- Watercourse

- Water Level Difference (m)
- <= -0.2
 - 0.2 - -0.1
 - 0.1 - -0.05
 - 0.05 - -0.01
 - 0.01 - 0.01
 - 0.01 - 0.05
 - 0.05 - 0.1
 - 0.1 - 0.2
 - > 0.2
 - Was wet, now dry
 - Was dry now wet



Job Number: J1382
Scale : 1:90000@A3
Date : 20/11/2024
Revision : 01
Created by : PC
Coordinate System : GDA2020 /
MGA zone 56

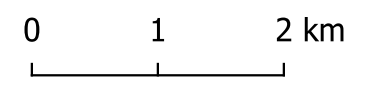




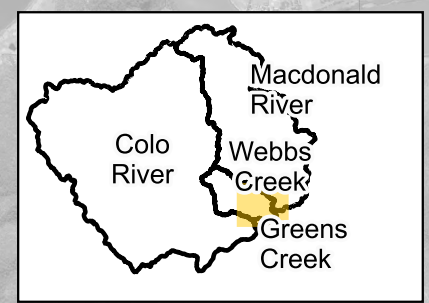
RG-00-504
Webbs Creek
Low Blockage
Sensitivity 1%AEP
Map 4 of 5

- Study Area
- Watercourse

- Water Level Difference (m)
- <= -0.2
 - 0.2 - -0.1
 - 0.1 - -0.05
 - 0.05 - -0.01
 - 0.01 - 0.01
 - 0.01 - 0.05
 - 0.05 - 0.1
 - 0.1 - 0.2
 - > 0.2
 - Was wet, now dry
 - Was dry now wet



Job Number: J1382
Scale : 1:60000@A3
Date : 20/11/2024
Revision : 01
Created by : PC
Coordinate System : GDA2020 /
MGA zone 56

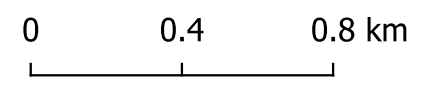




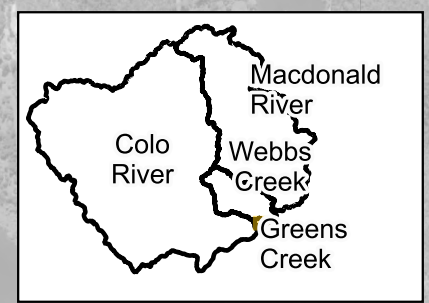
RG-00-504
Greens Creek
Low Blockage
Sensitivity 1%AEP
Map 5 of 5

- Study Area
- Watercourse

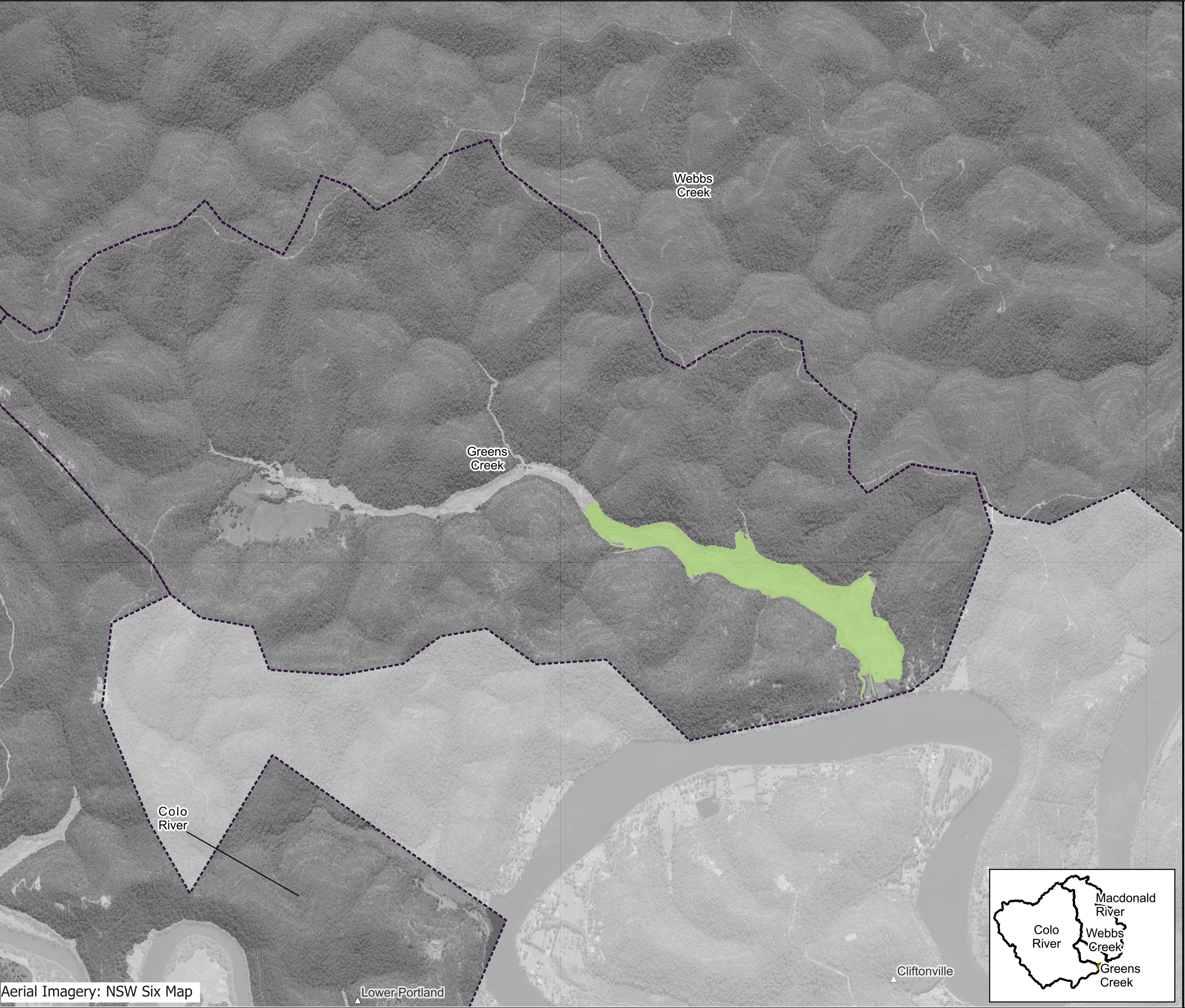
- Water Level Difference (m)
- <= -0.2
 - 0.2 - -0.1
 - 0.1 - -0.05
 - 0.05 - -0.01
 - 0.01 - 0.01
 - 0.01 - 0.05
 - 0.05 - 0.1
 - 0.1 - 0.2
 - > 0.2
 - Was wet, now dry
 - Was dry now wet



Job Number: J1382
Scale : 1:20000@A3
Date : 20/11/2024
Revision : 01
Created by : PC
Coordinate System : GDA2020 /
MGA zone 56



Aerial Imagery: NSW Six Map

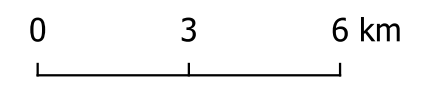




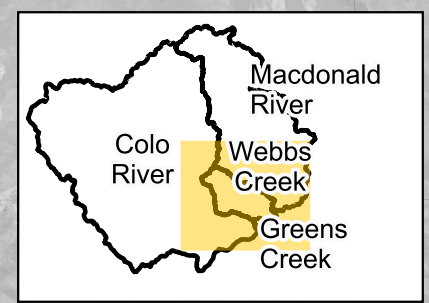
RG-00-505
Study Area
Increased Roughness
Sensitivity 20%AEP
Map 1 of 5

- Study Area
- Watercourse

- Water Level Difference (m)
- <= -2
 - 2 - -1
 - 1 - -0.5
 - 0.5 - -0.1
 - 0.1 - 0.1
 - 0.1 - 0.5
 - 0.5 - 1
 - 1 - 2
 - > 2
 - Was wet, now dry
 - Was dry now wet



Job Number: J1382
Scale : 1:150000@A3
Date : 04/12/2024
Revision : 01
Created by : PC
Coordinate System : GDA2020 /
MGA zone 56

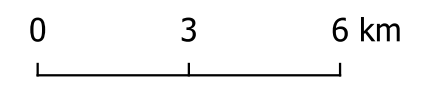




**RG-00-505
Study Area
Increased Roughness
Sensitivity 20% AEP
Map 1 of 5**

- Study Area
- Watercourse

- Water Level Difference (m)**
- <= -2
 - 2 - -1
 - 1 - -0.5
 - 0.5 - -0.1
 - 0.1 - 0.1
 - 0.1 - 0.5
 - 0.5 - 1
 - 1 - 2
 - > 2
 - Was wet, now dry
 - Was dry now wet



Job Number: J1382
 Scale : 1:150000@A3
 Date : 04/12/2024
 Revision : 01
 Created by : PC
 Coordinate System : GDA2020 /
 MGA zone 56

