

Hawkesbury Waste Management Facility - Yearly Summary for 2022/2023

Licence number - 5293

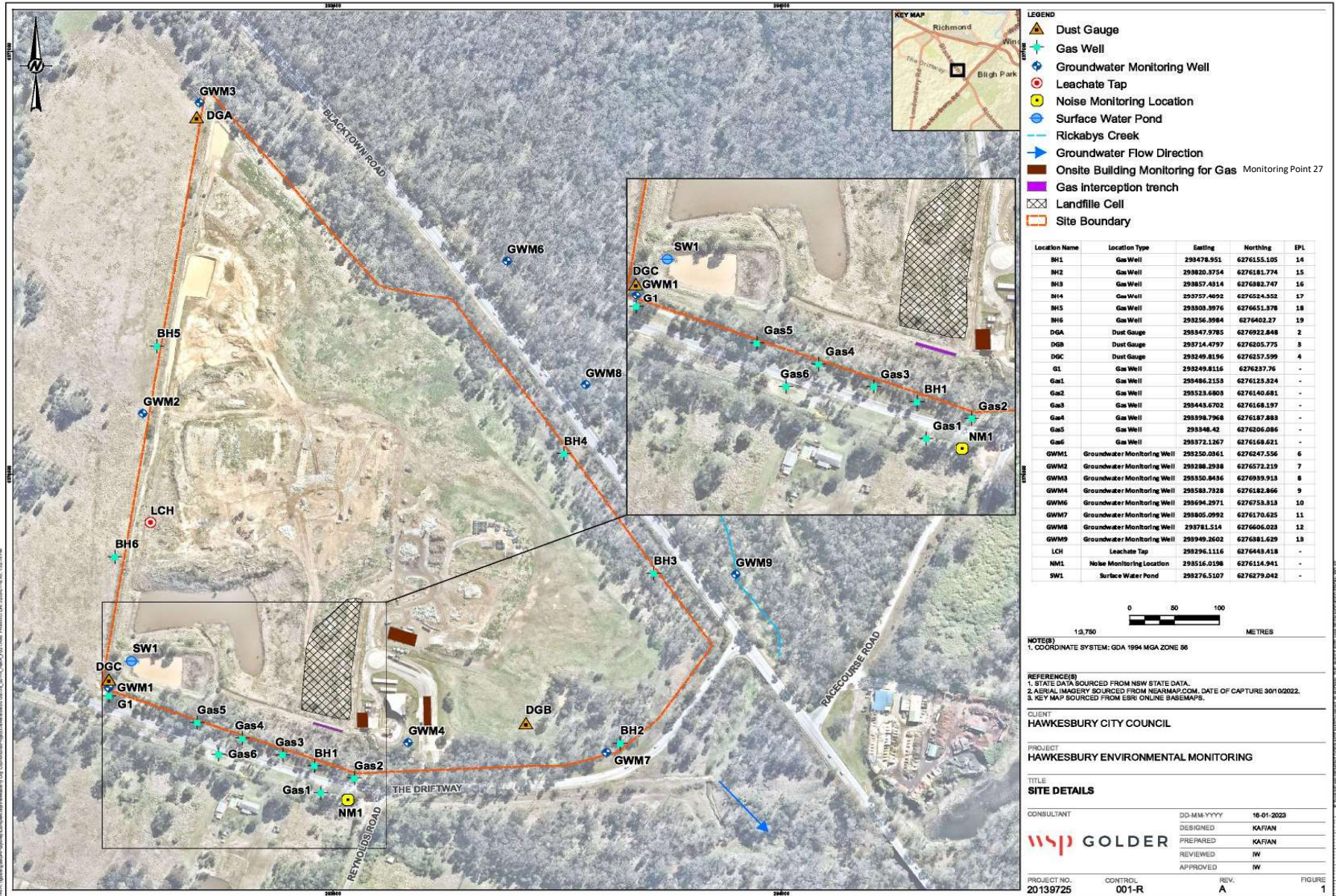
Hawkesbury Waste Management Facility - The Driftway, South WindsorNSW 2756 Licencee - Hawkesbury City Council

Public Register : <https://www.epa.nsw.gov.au/licensing-and-regulation/public-registers>

Licence Period - 25th July - 24th July

LOR = Limit of Reporting

NT = Not Tested



Waste Management Facility - 5293

Monitoring Point 14 - BH1

Pollutant	Unit	Monitoring Frequency	Date Sampled	Date Sampled	Date Sampled	Date Sampled	Date Sampled	Date Sampled
			26/07/2022	1/08/2022	26/09/2022	31/10/2022	7/11/2022	20/12/2022
			Date Obtained	Date Obtained	Date Obtained	Date Obtained	Date Obtained	Date Obtained
Sample Code	Sample Code	Sample Code	Sample Code	Sample Code	Sample Code			
Carbon Dioxide	% v/v	Monthly	1.2	1.2	1.3	2	18	1.2
Methane	% v/v	Monthly	0.2	0	0.5	0.5	1.3	0.3

Pollutant	Unit	Monitoring Frequency	Date Sampled	Date Sampled	Date Sampled	Date Sampled	Date Sampled	Date Sampled
			30/01/2023	28/02/2023	28/03/2023	24/04/2023	22/05/2023	29/06/2023
			Date Obtained	Date Obtained	Date Obtained	Date Obtained	Date Obtained	Date Obtained
				25/05/2023	4/04/2023		15/07/2023	26/06/2023
Sample Code	Sample Code	Sample Code	Sample Code	Sample Code	Sample Code			
Carbon Dioxide	% v/v	Monthly	1	18.9	14	15.1	12.1	10.7
Methane	% v/v	Monthly	0.1	0	0	0	0.1	0.1

Monitoring Point 15 - BH2

Pollutant	Unit	Monitoring Frequency	Date Sampled	Date Sampled
			7/11/2022	22/05/2023
			Date Obtained	Date Obtained
Sample Code	Sample Code			
Carbon Dioxide	% v/v	Every 6 Months	0.1	0.6
Methane	% v/v	Every 6 Months	0	0

Monitoring Point 16 - BH3

Pollutant	Unit	Monitoring Frequency	Date Sampled	Date Sampled
			7/11/2022	22/05/2023
			Date Obtained	Date Obtained
Sample Code	Sample Code			
Carbon Dioxide	% v/v	Every 6 Months	28.8	1.7
Methane	% v/v	Every 6 Months	0	0

Waste Management Facility - 5293

Monitoring Point 17 - BH4

Pollutant	Unit	Monitoring Frequency	Date Sampled	Date Sampled
			7/11/2022	22/05/2023
			Date Obtained	Date Obtained
Sample Code	Sample Code			
Carbon Dioxide	% v/v	Every 6 Months	0.1	0.3
Methane	% v/v	Every 6 Months	0	0

Monitoring Point 18 - BH5

Pollutant	Unit	Monitoring Frequency	Date Sampled	Date Sampled	Date Sampled	Date Sampled	Date Sampled	Date Sampled
			26/07/2022	1/08/2022	26/09/2022	31/10/2022	7/11/2022	20/12/2022
			Date Obtained	Date Obtained	Date Obtained	Date Obtained	Date Obtained	Date Obtained
Sample Code	Sample Code	Sample Code	Sample Code	Sample Code	Sample Code			
Carbon Dioxide	% v/v	Monthly	1.4	5.1	1.4	2.4	0.1	1.2
Methane	% v/v	Monthly	0.9	0	0.8	1.5	0	0.5

Pollutant	Unit	Monitoring Frequency	Date Sampled	Date Sampled	Date Sampled	Date Sampled	Date Sampled	Date Sampled
			30/01/2023	28/02/2023	28/03/2023	24/04/2023	22/05/2023	29/06/2023
			Date Obtained	Date Obtained	Date Obtained	Date Obtained	Date Obtained	Date Obtained
				25/05/2023	4/04/2023		15/07/2023	26/06/2023
Sample Code	Sample Code	Sample Code	Sample Code	Sample Code	Sample Code			
Carbon Dioxide	% v/v	Monthly	1.1	2.2	1.3	1.9	2.7	2.1
Methane	% v/v	Monthly	0.9	0.6	0.3	0.1	0.1	0.1

Monitoring Point 19 - BH6

Pollutant	Unit	Monitoring Frequency	Date Sampled	Date Sampled	Date Sampled	Date Sampled	Date Sampled	Date Sampled
			26/07/2022	1/08/2022	26/09/2022	31/10/2022	7/11/2022	20/12/2022
			Date Obtained	Date Obtained	Date Obtained	Date Obtained	Date Obtained	Date Obtained
Sample Code	Sample Code	Sample Code	Sample Code	Sample Code	Sample Code			
Carbon Dioxide	% v/v	Monthly	6.5	21.1	6.9	8.8	28	4.1
Methane	% v/v	Monthly	20.1	0	17.1	18.1	0.5	15.9

Waste Management Facility - 5293

			Date Sampled	Date Sampled	Date Sampled	Date Sampled	Date Sampled	Date Sampled
			30/01/2023	28/02/2023	28/03/2023	24/04/2023	22/05/2023	29/06/2023
			Date Obtained	Date Obtained	Date Obtained	Date Obtained	Date Obtained	Date Obtained
				25/05/2023	4/04/2023		15/07/2023	26/06/2023
			Sample Code	Sample Code	Sample Code	Sample Code	Sample Code	Sample Code
Carbon Dioxide	% v/v	Monthly	6.2	23.9	15.7	9.7	10.1	12.1
Methane	% v/v	Monthly	11.2	25.1	16.1	10.7	15.1	17.1

Monitoring Point 20 - G1

Pollutant	Unit	Monitoring Frequency	Date Sampled	Date Sampled	Date Sampled	Date Sampled	Date Sampled	Date Sampled
			26/07/2022	1/08/2022	26/09/2022	31/10/2022	7/11/2022	20/12/2022
			Date Obtained	Date Obtained	Date Obtained	Date Obtained	Date Obtained	Date Obtained
			Sample Code	Sample Code	Sample Code	Sample Code	Sample Code	Sample Code
Carbon Dioxide	% v/v	Monthly	0.1	8.9	0.1	0.2	0.3	0.1
Methane	% v/v	Monthly	0	0	0	0	0	0

			Date Sampled	Date Sampled	Date Sampled	Date Sampled	Date Sampled	Date Sampled
			30/01/2023	28/02/2023	28/03/2023	24/04/2023	22/05/2023	29/06/2023
			Date Obtained	Date Obtained	Date Obtained	Date Obtained	Date Obtained	Date Obtained
				25/05/2023	4/04/2023		15/07/2023	26/06/2023
			Sample Code	Sample Code	Sample Code	Sample Code	Sample Code	Sample Code
Carbon Dioxide	% v/v	Monthly	0.1	0.1	0.1	0.1	0.1	0.2
Methane	% v/v	Monthly	0	0	0	0	0	0

Point 21 - Gas2

Pollutant	Unit	Monitoring Frequency	Date Sampled	Date Sampled	Date Sampled	Date Sampled	Date Sampled	Date Sampled
			26/07/2022	1/08/2022	26/09/2022	31/10/2022	7/11/2022	20/12/2022
			Date Obtained	Date Obtained	Date Obtained	Date Obtained	Date Obtained	Date Obtained
			Sample Code	Sample Code	Sample Code	Sample Code	Sample Code	Sample Code
Carbon Dioxide	% v/v	Monthly	<i>Well not installed</i>					
Methane	% v/v	Monthly	<i>Well not installed</i>					

Waste Management Facility - 5293

			Date Sampled	Date Sampled	Date Sampled	Date Sampled	Date Sampled	Date Sampled	
			30/01/2023	28/02/2023	28/03/2023	24/04/2023	22/05/2023	29/06/2023	
			Date Obtained	Date Obtained	Date Obtained	Date Obtained	Date Obtained	Date Obtained	
				25/05/2023	4/04/2023		15/07/2023	26/06/2023	
			Sample Code	Sample Code	Sample Code	Sample Code	Sample Code	Sample Code	
Carbon Dioxide	% v/v	Monthly	<i>Well not installed</i>					0.7	0.6
Methane	% v/v	Monthly						0	0

Point 22 - Gas3

Pollutant	Unit	Monitoring Frequency	Date Sampled	Date Sampled	Date Sampled	Date Sampled	Date Sampled	Date Sampled	
			26/07/2022	1/08/2022	26/09/2022	31/10/2022	7/11/2022	20/12/2022	
			Date Obtained	Date Obtained	Date Obtained	Date Obtained	Date Obtained	Date Obtained	
			Sample Code	Sample Code	Sample Code	Sample Code	Sample Code	Sample Code	
Carbon Dioxide	% v/v	Monthly	<i>Well not installed</i>						
Methane	% v/v	Monthly							

			Date Sampled	Date Sampled	Date Sampled	Date Sampled	Date Sampled	Date Sampled	
			30/01/2023	28/02/2023	28/03/2023	24/04/2023	22/05/2023	29/06/2023	
			Date Obtained	Date Obtained	Date Obtained	Date Obtained	Date Obtained	Date Obtained	
				25/05/2023	4/04/2023		15/07/2023	26/06/2023	
			Sample Code	Sample Code	Sample Code	Sample Code	Sample Code	Sample Code	
Carbon Dioxide	% v/v	Monthly	<i>Well not installed</i>					0.3	0.5
Methane	% v/v	Monthly						0	0

Point 23 - Gas4

Pollutant	Unit	Monitoring Frequency	Date Sampled	Date Sampled	Date Sampled	Date Sampled	Date Sampled	Date Sampled	
			26/07/2022	1/08/2022	26/09/2022	31/10/2022	7/11/2022	20/12/2022	
			Date Obtained	Date Obtained	Date Obtained	Date Obtained	Date Obtained	Date Obtained	
			Sample Code	Sample Code	Sample Code	Sample Code	Sample Code	Sample Code	
Carbon Dioxide	% v/v	Monthly	<i>Well not installed</i>						
Methane	% v/v	Monthly							

Waste Management Facility - 5293

			Date Sampled	Date Sampled	Date Sampled	Date Sampled	Date Sampled	Date Sampled	
			30/01/2023	28/02/2023	28/03/2023	24/04/2023	22/05/2023	29/06/2023	
			Date Obtained	Date Obtained	Date Obtained	Date Obtained	Date Obtained	Date Obtained	
				25/05/2023	4/04/2023		15/07/2023	26/06/2023	
			Sample Code	Sample Code	Sample Code	Sample Code	Sample Code	Sample Code	
Carbon Dioxide	% v/v	Monthly	<i>Well not installed</i>					1.1	0.4
Methane	% v/v	Monthly						0	0

Point 24- Gas 6

Pollutant	Unit	Monitoring Frequency	Date Sampled	Date Sampled	Date Sampled	Date Sampled	Date Sampled	Date Sampled	
			26/07/2022	1/08/2022	26/09/2022	31/10/2022	7/11/2022	20/12/2022	
			Date Obtained	Date Obtained	Date Obtained	Date Obtained	Date Obtained	Date Obtained	
			Sample Code	Sample Code	Sample Code	Sample Code	Sample Code	Sample Code	
Carbon Dioxide	% v/v	Monthly	<i>Well not installed</i>						
Methane	% v/v	Monthly							

			Date Sampled	Date Sampled	Date Sampled	Date Sampled	Date Sampled	Date Sampled	
			30/01/2023	28/02/2023	28/03/2023	24/04/2023	22/05/2023	29/06/2023	
			Date Obtained	Date Obtained	Date Obtained	Date Obtained	Date Obtained	Date Obtained	
				25/05/2023	4/04/2023		15/07/2023	26/06/2023	
			Sample Code	Sample Code	Sample Code	Sample Code	Sample Code	Sample Code	
Carbon Dioxide	% v/v	Monthly	<i>Well not installed</i>					0.6	0.3
Methane	% v/v	Monthly						0	0

Point 25 - Gas interception trench

Pollutant	Unit	Monitoring Frequency	Date Sampled	Date Sampled	Date Sampled	Date Sampled	Date Sampled	Date Sampled	
			26/07/2022	1/08/2022	26/09/2022	31/10/2022	7/11/2022	20/12/2022	
			Date Obtained	Date Obtained	Date Obtained	Date Obtained	Date Obtained	Date Obtained	
			Sample Code	Sample Code	Sample Code	Sample Code	Sample Code	Sample Code	
Carbon Dioxide	% v/v	Monthly	<i>Well not installed</i>						
Methane	% v/v	Monthly							

Waste Management Facility - 5293

			Date Sampled	Date Sampled	Date Sampled	Date Sampled	Date Sampled	Date Sampled	
			30/01/2023	28/02/2023	28/03/2023	24/04/2023	22/05/2023	29/06/2023	
			Date Obtained	Date Obtained	Date Obtained	Date Obtained	Date Obtained	Date Obtained	
				25/05/2023	4/04/2023		15/07/2023	26/06/2023	
			Sample Code	Sample Code	Sample Code	Sample Code	Sample Code	Sample Code	
Carbon Dioxide	% v/v	Monthly	<i>Well not installed</i>					0.9	0.5
Methane	% v/v	Monthly						0.1	0.1

RW1

Pollutant	Unit	Monitoring Frequency	Date Sampled	Date Sampled	Date Sampled	Date Sampled	Date Sampled	Date Sampled
			26/07/2022	1/08/2022	26/09/2022	31/10/2022	7/11/2022	20/12/2022
			Date Obtained	Date Obtained	Date Obtained	Date Obtained	Date Obtained	Date Obtained
			Sample Code	Sample Code	Sample Code	Sample Code	Sample Code	Sample Code
Carbon Dioxide	% v/v	Monthly	<i>Well not installed</i>					
Methane	% v/v	Monthly						

			Date Sampled	Date Sampled	Date Sampled	Date Sampled	Date Sampled	Date Sampled
			30/01/2023	28/02/2023	28/03/2023	24/04/2023	22/05/2023	29/06/2023
			Date Obtained	Date Obtained	Date Obtained	Date Obtained	Date Obtained	Date Obtained
				25/05/2023	4/04/2023		15/07/2023	26/06/2023
			Sample Code	Sample Code	Sample Code	Sample Code	Sample Code	Sample Code
Carbon Dioxide	% v/v	Monthly	<i>Well not installed</i>					
Methane	% v/v	Monthly						

Monitoring Point 26 - Surface Methane

Pollutant	Unit	Monitoring Frequency	Date Sampled	Date Sampled	Date Sampled
			Aug-22	Nov-22	Feb-23
			Date Obtained	Date Obtained	Date Obtained
			Sample Code	Sample Code	Sample Code
Methane	% v/v	Quarterly	<0.05%	<0.05%	<0.05%

Date Sampled	Date Sampled	Date Sampled
May-23		
Date Obtained	Date Obtained	Date Obtained
Sample Code	Sample Code	Sample Code
-		

Waste Management Facility - 5293

Monitoring Point 2 - DGA

Pollutant	Unit	Monitoring Frequency	Start Date	Start Date	Start Date	Start Date
			24/05/2022	29/08/2022	8/11/2022	27/02/2023
			Data Collection Date	Data Collection Date	Data Collection Date	Data Collection Date
			29/08/2022	8/11/2022	27/02/2023	24/05/2023
Sample Code	Sample Code	Sample Code	Sample Code			
Particulates deposited Matter	g/m ² /month	Quarterly	0.1	0.1	0.1	0.1

Monitoring Point 3 - DGB

Pollutant	Unit	Monitoring Frequency	Start Date	Start Date	Start Date	Start Date
			24/05/2022	29/08/2022	8/11/2022	27/02/2023
			Data Collection Date	Data Collection Date	Data Collection Date	Data Collection Date
			29/08/2022	8/11/2022	27/02/2023	24/05/2023
Sample Code	Sample Code	Sample Code	Sample Code			
Particulates deposited Matter	g/m ² /month	Quarterly	0.3	0.4	1.1	0.9

Monitoring Point 4 - DGC

Pollutant	Unit	Monitoring Frequency	Start Date	Start Date	Start Date	Start Date
			24/05/2022	29/08/2022	8/11/2022	27/02/2023
			Data Collection Date	Data Collection Date	Data Collection Date	Data Collection Date
			29/08/2022	8/11/2022	27/02/2023	24/05/2023
Sample Code	Sample Code	Sample Code	Sample Code			
Particulates deposited Matter	g/m ² /month	Quarterly	0.2	0.5	0.1	1.6

Waste Management Facility - 5293

Monitoring Point 1 - LCH

Pollutant	Unit	Monitoring Frequency	Date Sampled	Date Sampled	Date Sampled	Date Sampled
			29/08/2022	7/11/2022	27/02/2023	24/05/2023
			Date Data Obtained	Date Data Obtained	Date Data Obtained	Date Data Obtained
					25/05/2023	15/07/2023
Sample Code	Sample Code	Sample Code	Sample Code			
	SE238805.009					
Alkalinity (as calcium carbonate)	mg/L	Quarterly	490	630	1300	1400
Aluminium	mg/L	Yearly				2.1
Arsenic	mg/L	Yearly				0.019
Barium	mg/L	Yearly				0.45
Benzene	mg/L	Yearly				NT
Biochemical oxygen demand	mg/L	Yearly				10
Cadmium	mg/L	Yearly				0.00001
Calcium	mg/L	Quarterly	28	27	58	64
Chemical oxygen demand	mg/L	Yearly				15
Chloride	mg/L	Quarterly	140	180	520	790
Chromium (hexavalent)	mg/L	Yearly				0.01
Cobalt	mg/L	Yearly				0.015
Conductivity	µS/cm	Quarterly	1,511	1,959	3,419	5264
Copper	mg/L	Yearly				0.05
Ethyl benzene	mg/L	Yearly				NT
Fluoride	mg/L	Yearly				6
Lead	mg/L	Yearly				0.02
Magnesium	mg/L	Quarterly	20	23	62	83
Manganese	mg/L	Yearly				0.3
Mercury	mg/L	Yearly				0.0001
Nitrate	mg/L	Quarterly	<0.005	<0.005	0.005	0.005
Nitrite	mg/L	Quarterly	<0.005	<0.005	0.005	0.005
Nitrogen (ammonia)	mg/L	Quarterly	152	60		150
Organochlorine pesticides	mg/L	Yearly				NT
Orgnochlorine pesticides	mg/L	Yearly				NT
pH	pH	Quarterly	7.22	7.09	6.66	7.03
Phosphate	mg/L	Yearly				5.4
Phosphorus (total)	mg/L	Quarterly	2.6	1.7	5.5	1.5
Potassium	mg/L	Quarterly	44	53	100	110
Sodium	mg/L	Quarterly	140	200	460	660
Sulfate	mg/L	Quarterly	2.1	3.2	5.6	16
Toluene	mg/L	Yearly				NT
Total chromium	mg/L	Yearly				0.035
Total dissolved solids	mg/L	Quarterly	650	850	1800	2400
Total Iron	mg/L	Yearly				7.5
Total organic carbon	mg/L	Yearly				120
Total petroleum hydrocarbons C6-C9	mg/L	Yearly				NT
C10-C14	mg/L	Yearly				NT
C15-C28	mg/L	Yearly				NT
C29-C36	mg/L	Yearly				NT
C10-C36 (Sum)	mg/L	Yearly				NT
Total Phenolics	mg/L	Yearly				NT
Xylene	mg/L	Yearly				NT
Zinc	mg/L	Yearly				0.081

Waste Management Facility - 5293

Monitoring Point 5 - SW1

Pollutant	Unit	Monitoring Frequency	Date Sampled	Date Sampled	Date Sampled	Date Sampled
			29/08/2022	7/11/2022	27/02/2023	24/05/2023
			Date Data Obtained	Date Data Obtained	Date Data Obtained	Date Data Obtained
					25/05/2023	15/07/2023
			Sample Code	Sample Code	Sample Code	Sample Code
		SE238805.010				
Alkalinity (as calcium carbonate)	mg/L	Quarterly	32	42	17	24
Ammonia	mg/L	Quarterly	0.14	0.04	0.01	2.6
Biochemical oxygen demand	mg/L	Quarterly	<5	<5	5	5
Sulfate	mg/L	Quarterly	33	24	96	340
Total Phenolics	mg/L	Yearly				NT*

Waste Management Facility - 5293

Monitoring Point 6 - GWM1

Pollutant	Unit	Monitoring frequency	Date Sampled	Date Sampled	Date Sampled	Date Sampled
			29/08/2022	7/11/2022	27/02/2023	22/05/2023
			Date Data Obtained	Date Data Obtained	Date Data Obtained	Date Data Obtained
			Sample Code	Sample Code	Sample Code	Sample Code
				SE238805.001		SE247868
Alkalinity (as calcium carbonate)	mg/L	Quarterly	280	270	330	270
Aluminium	mg/L	Yearly				6.26
Ammonia	mg/L	Quarterly	<0.05	<0.05	0.01	0.15
Arsenic	mg/L	Yearly				0.002
Barium	mg/L	Yearly				0.103
Benzene	mg/L	Yearly				<0.0005
Biochemical oxygen demand	mg/L	Yearly				5
Cadmium	mg/L	Yearly				0.0004
Calcium	mg/L	Quarterly	97	91	89	89
Carbonate	mg/L	Quarterly	<1	<1	<1	NT
Chemical oxygen demand	mg/L	Yearly				10
Chloride	mg/L	Quarterly	4200	4300	2.9	4100
Chlorinated volatile compound	mg/L	Yearly				<LOR
Chromium (hexavalent)	mg/L	Yearly				0.01
Cobalt	mg/L	Yearly				0.008
Conductivity	µS/cm	Quarterly	10588	11076	9879	10948
Copper	mg/L	Yearly				0.011
Ethyl benzene	mg/L	Yearly				<0.0005
Fluoride	mg/L	Yearly				8
Lead	mg/L	Yearly				0.012
Magnesium	mg/L	Quarterly	320	290	300	300
Manganese	mg/L	Yearly				0.108
Mercury	mg/L	Yearly				0.0001
Nitrogen Oxides	mg/L	Yearly				0.005
Organochlorine pesticides	mg/L	Yearly				NT
Organophosphate pesticides	mg/L	Yearly				NT
pH	pH	Quarterly	6.32	6.3	5.45	6.36
Phosphate	mg/L	Yearly				0.01
Phosphorus (Total)	mg/L	Quarterly	1.3	0.95	0.17	0.05
Potassium	mg/L	Quarterly	3	2.6	2.9	3
Salinity	mg/L	Quarterly	8100	8000	8000	7800
Sodium	mg/L	Quarterly	2200	2100	2000	1900
Sulfate	mg/L	Quarterly	290	300	280	270
Toluene	mg/L	Yearly				<0.0005
Total chromium	mg/L	Yearly				0.008
Total dissolved solids	mg/L	Quarterly	8000	8100	7400	7300
Total organic carbon	mg/L	Yearly				1.3
Total petroleum hydrocarbons C6-C9	mg/L	Yearly				NT
C10-C14	mg/L	Yearly				NT
C15-C28	mg/L	Yearly				NT
C29-C36	mg/L	Yearly				NT
C10-C36 (Sum)	mg/L	Yearly				NT
Total Phenolics	mg/L	Yearly				NT
Xylene	mg/L	Yearly				<0.0015
Zinc	mg/L	Yearly				0.038

Waste Management Facility - 5293

Monitoring Point 7 - GWM2

Pollutant	Unit	Monitoring frequency	Date Sampled	Date Sampled	Date Sampled	Date Sampled
			29/08/2022	7/11/2022	27/02/2023	22/05/2023
			Date Data Obtained	Date Data Obtained	Date Data Obtained	Date Data Obtained
					25/05/2023	15/07/2023
Sample Code	Sample Code	Sample Code	Sample Code			
	SE238805.002		SE247868			
Alkalinity (as calcium carbonate)	mg/L	Quarterly	320	300	330	290
Aluminium	mg/L	Yearly				5.6
Ammonia	mg/L	Quarterly	<0.05	<0.05	<0.01	0.18
Arsenic	mg/L	Yearly				0.001
Barium	mg/L	Yearly				0.11
Benzene	mg/L	Yearly				<0.0005
Biochemical oxygen demand	mg/L	Yearly				5
Cadmium	mg/L	Yearly				0.0005
Calcium	mg/L	Quarterly	120	110	110	110.00
Carbonate	mg/L	Quarterly	<1	<1	<1	NT
Chemical oxygen demand	mg/L	Yearly				10
Chloride	mg/L	Quarterly	4900	5000	4700	4600
Chlorinated volatile compound	mg/L	Yearly				<LOR
Chromium (hexavalent)	mg/L	Yearly				0.01
Cobalt	mg/L	Yearly				0.01
Conductivity	µS/cm	Quarterly	12912	14560	12113	12422
Copper	mg/L	Yearly				NT
Ethyl benzene	mg/L	Yearly				<0.0005
Fluoride	mg/L	Yearly				5
Lead	mg/L	Yearly				0.01
Magnesium	mg/L	Quarterly	320	310	310	310
Manganese	mg/L	Yearly				0.12
Mercury	mg/L	Yearly				0.0001
Nitrogen Oxides	mg/L	Yearly				0.005
Organochlorine pesticides	mg/L	Yearly				NT
Organophosphate pesticides	mg/L	Yearly				NT
pH	pH	Quarterly	5.98	6.31	4.15	6.01
Phosphate	mg/L	Yearly				0.01
Phosphorus (Total)	mg/L	Quarterly	2.5	0.76	3.6	1.2
Potassium	mg/L	Quarterly	1.3	1	1.40	1.50
Salinity	mg/L	Quarterly	8000	8900	8900	8400
Sodium	mg/L	Quarterly	2500	2300	2300	2300.00
Sulfate	mg/L	Quarterly	280	300	290	270
Toluene	mg/L	Yearly				<0.0005
Total chromium	mg/L	Yearly				0.01
Total dissolved solids	mg/L	Quarterly	8200	9000	7900	7400
Total organic carbon	mg/L	Yearly				1.3
Total petroleum hydrocarbons C6-C9	mg/L	Yearly				NT
C10-C14	mg/L	Yearly				NT
C15-C28	mg/L	Yearly				NT
C29-C36	mg/L	Yearly				NT
C10-C36 (Sum)	mg/L	Yearly				NT
Total Phenolics	mg/L	Yearly				NT
Xylene	mg/L	Yearly				<0.0015
Zinc	mg/L	Yearly				0.041

Waste Management Facility - 5293

Monitoring Point 8 - GWM3

Pollutant	Unit	Monitoring frequency	Date Sampled	Date Sampled	Date Sampled	Date Sampled
			29/08/2022	7/11/2022	27/02/2023	22/05/2023
			Date Data Obtained	Date Data Obtained	Date Data Obtained	Date Data Obtained
			Sample Code	Sample Code	Sample Code	Sample Code
				SE238805.003		SE247868
Alkalinity (as calcium carbonate)	mg/L	Quarterly	520	490	500	480
Aluminium	mg/L	Yearly				13.8
Ammonia	mg/L	Quarterly	<0.05	<0.05	0.03	<0.05
Arsenic	mg/L	Yearly				0.003
Barium	mg/L	Yearly				0.019
Benzene	mg/L	Yearly				<0.0005
Biochemical oxygen demand	mg/L	Yearly				5
Cadmium	mg/L	Yearly				0.0002
Calcium	mg/L	Quarterly	140	120	130	130
Carbonate	mg/L	Quarterly	<1	<1	<1	NT
Chemical oxygen demand	mg/L	Yearly				10
Chloride	mg/L	Quarterly	7500	7500	7400	7600
Chlorinated volatile compound	mg/L	Yearly				<LOR
Chromium (hexavalent)	mg/L	Yearly				0.01
Cobalt	mg/L	Yearly				0.014
Conductivity	µS/cm	Quarterly	19053	18899	18071	15729
Copper	mg/L	Yearly				0.012
Ethyl benzene	mg/L	Yearly				<0.0005
Fluoride	mg/L	Yearly				4
Lead	mg/L	Yearly				0.009
Magnesium	mg/L	Quarterly	610	540	570	560
Manganese	mg/L	Yearly				0.109
Mercury	mg/L	Yearly				0.0001
Nitrogen Oxides	mg/L	Yearly				0.005
Organochlorine pesticides	mg/L	Yearly				NT
Organophosphate pesticides	mg/L	Yearly				NT
pH	pH	Quarterly	6.61	6.48	5.9	5.85
Phosphate	mg/L	Yearly				0.01
Phosphorus (Total)	mg/L	Quarterly	0.22	0.2	0.59	0.11
Potassium	mg/L	Quarterly	3.2	2.9	3.2	3.3
Salinity	mg/L	Quarterly	13900	14100	14000	14000
Sodium	mg/L	Quarterly	3800	3400	3500	3300
Sulfate	mg/L	Quarterly	550	580	580	550
Toluene	mg/L	Yearly				<0.0005
Total chromium	mg/L	Yearly				0.012
Total dissolved solids	mg/L	Quarterly	15000	13000	14000	11000
Total organic carbon	mg/L	Yearly				1.9
Total petroleum hydrocarbons C6-C9	mg/L	Yearly				NT
C10-C14	mg/L	Yearly				NT
C15-C28	mg/L	Yearly				NT
C29-C36	mg/L	Yearly				NT
C10-C36 (Sum)	mg/L	Yearly				NT
Total Phenolics	mg/L	Yearly				NT
Xylene	mg/L	Yearly				<0.0015
Zinc	mg/L	Yearly				0.022

Waste Management Facility - 5293

Monitoring Point 9 - GWM4

Pollutant	Unit	Monitoring frequency	Date Sampled	Date Sampled	Date Sampled	Date Sampled
			29/08/2022	7/11/2022	27/02/2023	22/05/2023
			Date Data Obtained	Date Data Obtained	Date Data Obtained	Date Data Obtained
					25/05/2023	15/07/2023
Sample Code	Sample Code	Sample Code	Sample Code			
			SE238805.004			SE247868
Alkalinity (as calcium carbonate)	mg/L	Quarterly	96	98	100	91
Aluminium	mg/L	Yearly				13.2
Ammonia	mg/L	Quarterly	<0.05	<0.05	<0.01	0.22
Arsenic	mg/L	Yearly				0.004
Barium	mg/L	Yearly				0.012
Benzene	mg/L	Yearly				<0.0005
Biochemical oxygen demand	mg/L	Yearly				5
Cadmium	mg/L	Yearly				0.0002
Calcium	mg/L	Quarterly	24	22	22	20
Carbonate	mg/L	Quarterly	<1	<1	<1	NT
Chemical oxygen demand	mg/L	Yearly				10
Chloride	mg/L	Quarterly	4100	3800	4100	3900
Chlorinated volatile compound	mg/L	Yearly				<LOR
Chromium (hexavalent)	mg/L	Yearly				0.01
Cobalt	mg/L	Yearly				0.006
Conductivity	µS/cm	Quarterly	9,730	10,778	9,932	10464
Copper	mg/L	Yearly				0.006
Ethyl benzene	mg/L	Yearly				<0.0005
Fluoride	mg/L	Yearly				5
Lead	mg/L	Yearly				0.008
Magnesium	mg/L	Quarterly	320	290	300	310
Manganese	mg/L	Yearly				0.234
Mercury	mg/L	Yearly				0.0001
Nitrogen Oxides	mg/L	Yearly				0.005
Organochlorine pesticides	mg/L	Yearly				NT
Organophosphate pesticides	mg/L	Yearly				NT
pH	pH	Quarterly	6.65	7.06	5.77	5.74
Phosphate	mg/L	Yearly				0.01
Phosphorus (Total)	mg/L	Quarterly	0.36	0.07	0.03	0.11
Potassium	mg/L	Quarterly	1	0.8	1.1	1.1
Salinity	mg/L	Quarterly	7100	7200	7500	7100
Sodium	mg/L	Quarterly	2100	1800	1800	1800
Sulfate	mg/L	Quarterly	140	130	140	130
Toluene	mg/L	Yearly				<0.0005
Total chromium	mg/L	Yearly				0.012
Total dissolved solids	mg/L	Quarterly	7800	7000	6900	6700
Total organic carbon	mg/L	Yearly				4.1
Total petroleum hydrocarbons C6-C9	mg/L	Yearly				NT
C10-C14	mg/L	Yearly				NT
C15-C28	mg/L	Yearly				NT
C29-C36	mg/L	Yearly				NT
C10-C36 (Sum)	mg/L	Yearly				NT
Total Phenolics	mg/L	Yearly				NT
Xylene	mg/L	Yearly				<0.0015
Zinc	mg/L	Yearly	0.032			0.032

Waste Management Facility - 5293

Monitoring Point 10 - GWM6

Pollutant	Unit	Monitoring frequency	Date Sampled	Date Sampled	Date Sampled	Date Sampled
			29/08/2022	7/11/2022	27/02/2023	22/05/2023
			Date Data Obtained	Date Data Obtained	Date Data Obtained	Date Data Obtained
					25/05/2023	15/07/2023
		Sample Code	Sample Code	Sample Code	Sample Code	
			SE238805.005		SE247868	
Alkalinity (as calcium carbonate)	mg/L	Quarterly	200	200	120	95
Aluminium	mg/L	Yearly				7.11
Ammonia	mg/L	Quarterly	0.01	0.13	<0.01	0.08
Arsenic	mg/L	Yearly				0.002
Barium	mg/L	Yearly				0.01
Benzene	mg/L	Yearly				<0.0005
Biochemical oxygen demand	mg/L	Yearly				5
Cadmium	mg/L	Yearly				0.0003
Calcium	mg/L	Quarterly	42	42	18	18
Carbonate	mg/L	Quarterly	<1	<1	<1	NT
Chemical oxygen demand	mg/L	Yearly				10
Chloride	mg/L	Quarterly	64	40	29	65
Chlorinated volatile compound	mg/L	Yearly				<LOR
Chromium (hexavalent)	mg/L	Yearly				0.01
Cobalt	mg/L	Yearly				0.008
Conductivity	µS/cm	Quarterly	723	515	549	577
Copper	mg/L	Yearly				0.01
Ethyl benzene	mg/L	Yearly				<0.0005
Fluoride	mg/L	Yearly				6
Lead	mg/L	Yearly				0.01
Magnesium	mg/L	Quarterly	17	15	7.3	8
Manganese	mg/L	Yearly				0.11
Mercury	mg/L	Yearly				0.0001
Nitrogen Oxides	mg/L	Yearly				0.005
Organochlorine pesticides	mg/L	Yearly				NT
Organophosphate pesticides	mg/L	Yearly				NT
pH	pH	Quarterly	5.87	6.62	6.54	4.8
Phosphate	mg/L	Yearly				0.02
Phosphorus (Total)	mg/L	Quarterly	1.9	0.11	0.29	1.8
Potassium	mg/L	Quarterly	0.4	0.4	0.2	0.3
Salinity	mg/L	Quarterly	230	290	200	280
Sodium	mg/L	Quarterly	67	48	42	44
Sulfate	mg/L	Quarterly	20	12	17	17
Toluene	mg/L	Yearly				<0.0005
Total chromium	mg/L	Yearly				0.001
Total dissolved solids	mg/L	Quarterly	400	330	380	700
Total organic carbon	mg/L	Yearly				13
Total petroleum hydrocarbons C6-C9	mg/L	Yearly				NT
C10-C14	mg/L	Yearly				NT
C15-C28	mg/L	Yearly				NT
C29-C36	mg/L	Yearly				NT
C10-C36 (Sum)	mg/L	Yearly				NT
Total Phenolics	mg/L	Yearly				NT
Xylene	mg/L	Yearly				<0.0015
Zinc	mg/L	Yearly	0.04			0.04

Waste Management Facility - 5293

Monitoring Point 11 - GWM7

Pollutant	Unit	Monitoring frequency	Date Sampled	Date Sampled	Date Sampled	Date Sampled
			29/08/2022	7/11/2022	27/02/2023	22/05/2023
			Date Data Obtained	Date Data Obtained	Date Data Obtained	Date Data Obtained
					25/05/2023	15/07/2023
		Sample Code	Sample Code	Sample Code	Sample Code	
			SE238805.006		SE247868	
Alkalinity (as calcium carbonate)	mg/L	Quarterly	220	300	220	200
Aluminium	mg/L	Yearly				5.45
Ammonia	mg/L	Quarterly	0.01	0.02	<0.01	<0.01
Arsenic	mg/L	Yearly				0.003
Barium	mg/L	Yearly				0.1
Benzene	mg/L	Yearly				<0.0005
Biochemical oxygen demand	mg/L	Yearly				5
Cadmium	mg/L	Yearly				0.0004
Calcium	mg/L	Quarterly	54	48	37	37
Carbonate	mg/L	Quarterly	<1	<1	<1	NT
Chemical oxygen demand	mg/L	Yearly				10
Chloride	mg/L	Quarterly	3800	3600	3600	3200
Chlorinated volatile compound	mg/L	Yearly				<LOR
Chromium (hexavalent)	mg/L	Yearly				0.01
Cobalt	mg/L	Yearly				0.005
Conductivity	µS/cm	Quarterly	9,948	10,138	8,363	9842
Copper	mg/L	Yearly				0.013
Ethyl benzene	mg/L	Yearly				<0.0005
Fluoride	mg/L	Yearly				3
Lead	mg/L	Yearly				0.01
Magnesium	mg/L	Quarterly	210	190	160	170
Manganese	mg/L	Yearly				0.14
Mercury	mg/L	Yearly				0.0001
Nitrogen Oxides	mg/L	Yearly				0.005
Organochlorine pesticides	mg/L	Yearly				NT
Organophosphate pesticides	mg/L	Yearly				NT
pH	pH	Quarterly	6.39	6.01	5.76	5.84
Phosphate	mg/L	Yearly				0.01
Phosphorus (Total)	mg/L	Quarterly	0.28	0.03	0.1	0.11
Potassium	mg/L	Quarterly	1.1	0.9	0.9	0.9
Salinity	mg/L	Quarterly	6900	7000	7100	6900
Sodium	mg/L	Quarterly	2000	1900	1800	1900
Sulfate	mg/L	Quarterly	120	140	100	81
Toluene	mg/L	Yearly				<0.0005
Total chromium	mg/L	Yearly				0.005
Total dissolved solids	mg/L	Quarterly	6500	7000	6100	5700
Total organic carbon	mg/L	Yearly				1.3
Total petroleum hydrocarbons C6-C9	mg/L	Yearly				NT
C10-C14	mg/L	Yearly				NT
C15-C28	mg/L	Yearly				NT
C29-C36	mg/L	Yearly				NT
C10-C36 (Sum)	mg/L	Yearly				NT
Total Phenolics	mg/L	Yearly				NT
Xylene	mg/L	Yearly				<0.0015
Zinc	mg/L	Yearly				0.04

Waste Management Facility - 5293

Monitoring Point 12 - GWM8

Pollutant	Unit	Monitoring frequency	Date Sampled	Date Sampled	Date Sampled	Date Sampled
			29/08/2022	7/11/2022	27/02/2023	22/05/2023
			Date Data Obtained	Date Data Obtained	Date Data Obtained	Date Data Obtained
					25/05/2023	15/07/2023
Sample Code	Sample Code	Sample Code	Sample Code			
	SE238805.007		SE247868			
Alkalinity (as calcium carbonate)	mg/L	Quarterly	300	250	180	130
Aluminium	mg/L	Yearly				9.9
Ammonia	mg/L	Quarterly	0.52	0.26	0.04	0.43
Arsenic	mg/L	Yearly				0.001
Barium	mg/L	Yearly				0.1
Benzene	mg/L	Yearly				<0.0005
Biochemical oxygen demand	mg/L	Yearly				5
Cadmium	mg/L	Yearly				0.0005
Calcium	mg/L	Quarterly	87	98	34	89
Carbonate	mg/L	Quarterly	<1	<1	<1	NT
Chemical oxygen demand	mg/L	Yearly				10
Chloride	mg/L	Quarterly	3500	3800	1800	4900
Chlorinated volatile compound	mg/L	Yearly				<LOR
Chromium (hexavalent)	mg/L	Yearly				0.01
Cobalt	mg/L	Yearly				NT
Conductivity	µS/cm	Quarterly	8,960	4,124	9,762	11759
Copper	mg/L	Yearly				0.013
Ethyl benzene	mg/L	Yearly				<0.0005
Fluoride	mg/L	Yearly				1
Lead	mg/L	Yearly				0.09
Magnesium	mg/L	Quarterly	230	270	96	290
Manganese	mg/L	Yearly				0.11
Mercury	mg/L	Yearly				0.0001
Nitrogen Oxides	mg/L	Yearly				0.01
Organochlorine pesticides	mg/L	Yearly				NT
Organophosphate pesticides	mg/L	Yearly				NT
pH	pH	Quarterly	6.32	6.35	6.61	6.33
Phosphate	mg/L	Yearly				0.02
Phosphorus (Total)	mg/L	Quarterly	1.7	0.28	0.27	6.6
Potassium	mg/L	Quarterly	10	8.2	6.8	5.4
Salinity	mg/L	Quarterly	5400	5100	4000	8900
Sodium	mg/L	Quarterly	1900	2000	730	2300
Sulfate	mg/L	Quarterly	140	180	81	200
Toluene	mg/L	Yearly				<0.0005
Total chromium	mg/L	Yearly				0.0005
Total dissolved solids	mg/L	Quarterly	5800	7500	3400	7600
Total organic carbon	mg/L	Yearly				14
Total petroleum hydrocarbons C6-C9	mg/L	Yearly				NT
C10-C14	mg/L	Yearly				NT
C15-C28	mg/L	Yearly				NT
C29-C36	mg/L	Yearly				NT
C10-C36 (Sum)	mg/L	Yearly				NT
Total Phenolics	mg/L	Yearly				NT
Xylene	mg/L	Yearly				<0.0015
Zinc	mg/L	Yearly				0.05

Waste Management Facility - 5293

Monitoring Point 13 - GWM9

Pollutant	Unit	Monitoring frequency	Date Sampled	Date Sampled	Date Sampled	Date Sampled
			29/08/2022	7/11/2022	27/02/2023	22/05/2023
			Date Data Obtained	Date Data Obtained	Date Data Obtained	Date Data Obtained
			Sample Code	Sample Code	Sample Code	Sample Code
				SE238805.008		SE247868
Alkalinity (as calcium carbonate)	mg/L	Quarterly	77	130	140	190
Aluminium	mg/L	Yearly				13.9
Ammonia	mg/L	Quarterly	0.06	0.55	0.56	0.94
Arsenic	mg/L	Yearly				0.003
Barium	mg/L	Yearly				0.01
Benzene	mg/L	Yearly				<0.0005
Biochemical oxygen demand	mg/L	Yearly				5
Cadmium	mg/L	Yearly				0.0004
Calcium	mg/L	Quarterly	7.2	7.5	7.1	11
Carbonate	mg/L	Quarterly	<1	<1	<1	NT
Chemical oxygen demand	mg/L	Yearly				10.1
Chloride	mg/L	Quarterly	130	280	360	1000
Chlorinated volatile compound	mg/L	Yearly				<LOR
Chromium (hexavalent)	mg/L	Yearly				0.01
Cobalt	mg/L	Yearly				0.008
Conductivity	µS/cm	Quarterly	1,043	640	1,716	2371
Copper	mg/L	Yearly				0.011
Ethyl benzene	mg/L	Yearly				<0.0005
Fluoride	mg/L	Yearly				1.5
Lead	mg/L	Yearly				0.034
Magnesium	mg/L	Quarterly	6	8.3	9.8	19
Manganese	mg/L	Yearly				0.15
Mercury	mg/L	Yearly				0.0001
Nitrogen Oxides	mg/L	Yearly				0.01
Organochlorine pesticides	mg/L	Yearly				NT
Organophosphate pesticides	mg/L	Yearly				NT
pH	pH	Quarterly	7.21	7.11	7.12	6.87
Phosphate	mg/L	Yearly				0.01
Phosphorus (Total)	mg/L	Quarterly	1.3	3.3	1.4	18
Potassium	mg/L	Quarterly	5.9	5.9	5.7	7.8
Salinity	mg/L	Quarterly	1500	1700	930	2300
Sodium	mg/L	Quarterly	100	220	250	400
Sulfate	mg/L	Quarterly	9.5	15	14	47
Toluene	mg/L	Yearly				<0.0005
Total chromium	mg/L	Yearly				0.001
Total dissolved solids	mg/L	Quarterly	370	690	750	1900
Total organic carbon	mg/L	Yearly				28
Total petroleum hydrocarbons C6-C9	mg/L	Yearly				NT
C10-C14	mg/L	Yearly				NT
C15-C28	mg/L	Yearly				NT
C29-C36	mg/L	Yearly				NT
C10-C36 (Sum)	mg/L	Yearly				NT
Total Phenolics	mg/L	Yearly				NT
Xylene	mg/L	Yearly				<0.0015
Zinc	mg/L	Yearly				0.03

Pollutant Monitoring - Correction Log

EPL No: 5293

Sample Point	Pollutant	Sample Date and Time	Original Data	Corrected Data	Date Originally Published	Reason
Monitoring Point 26	Methane	2022-2023	-	Refer to table.	Jul-24	Data not originally published.

Pollutant Monitoring - notes

EPL No: 5293

Sample Point	Pollutant	Note
5 - SW1	Total Phenolic	*Surface monitoring point had limited volume (due to construction of new landfill cell), therefore not enough water volume was available to conduct the Total Phenolic analysis.

Monitoring Point 26 - Further Detail

Reporting Year	Monitoring Date	Methane Concentration (ppm)	%	GPS Coordinates	
				Southing	Easting
2022	Aug-22	<500	<0.05%	N/A	N/A
	Nov-22	<500	<0.05%	N/A	N/A
2023	Feb-23	<500	<0.05%	N/A	N/A
	May-23	-		-	-

Comments

N/A

N/A

N/A

-

