

Disclaimer:
 1. Dams were assumed full of water at the start of the event.
 2. Filtering Criteria: Extent has been kept when:
 - Depth > 0.10 m; OR
 - Depth > 0.05 m AND (Velocity * Depth) > 0.025 m²/s; OR
 - Velocity > 2 m/s.
 Further to these criteria, "puddles" of less than 100 m² were removed from the extent.

Figure E.1.9.2
Peak flood level
1 in 2000 AEP event
East of North
Richmond

Legend

Study area
 — 1 m contour

Peak water level (m AHD)

 <= 5	 50 - 55
 5 - 10	 55 - 60
 10 - 15	 60 - 65
 15 - 20	 65 - 70
 20 - 25	 70 - 75
 25 - 30	 75 - 80
 30 - 35	 80 - 85
 35 - 40	 85 - 90
 40 - 45	 90 - 95
 45 - 50	 > 95



Report MHL3008
Redbank Creek Flood
Study



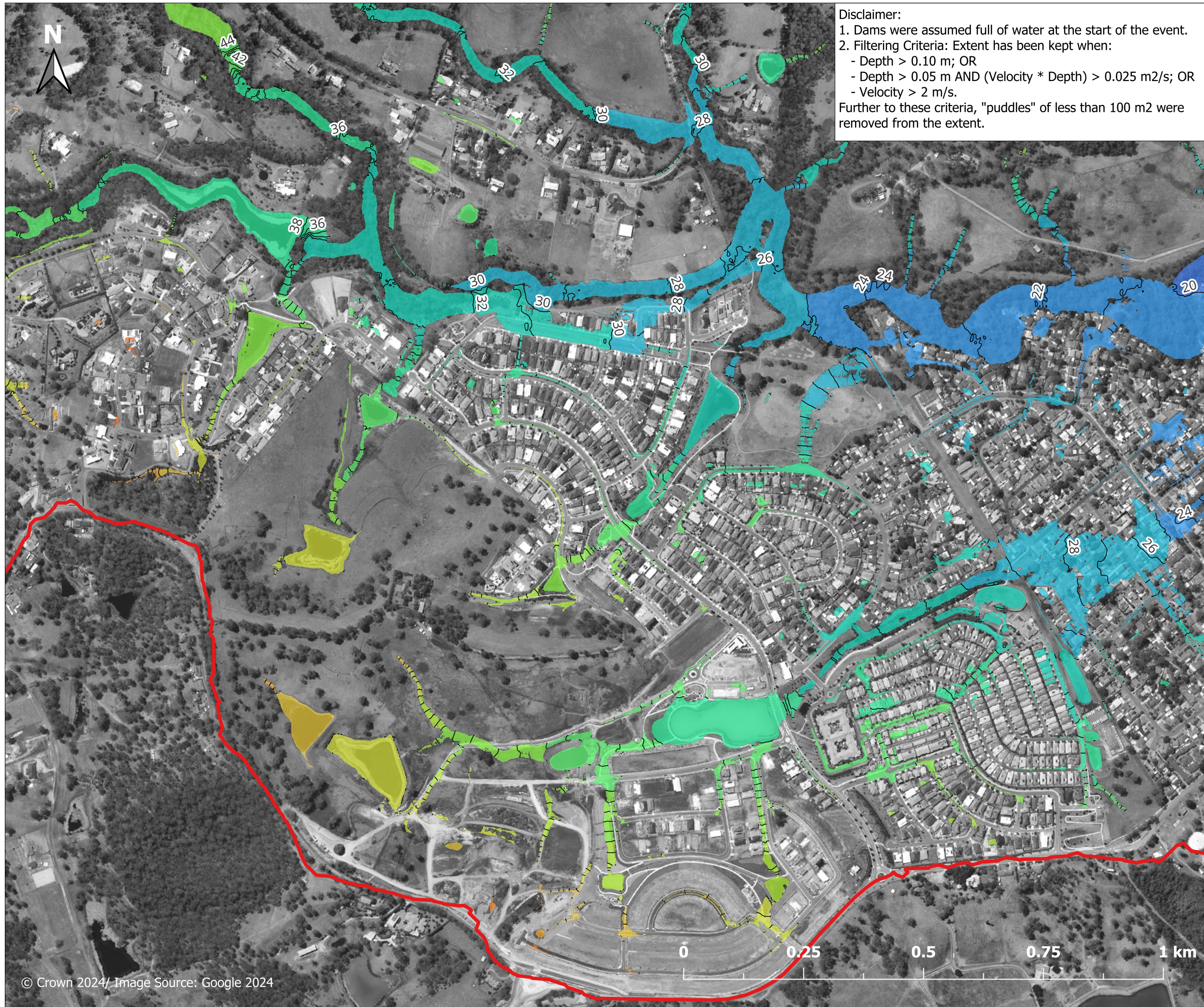


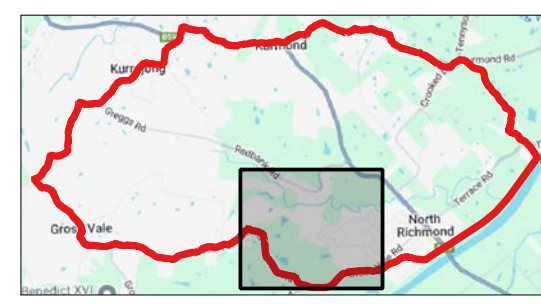
Figure E.1.9.3
Peak flood level
1 in 2000 AEP event
West of North
Richmond

Legend

- Study area
- 1 m contour

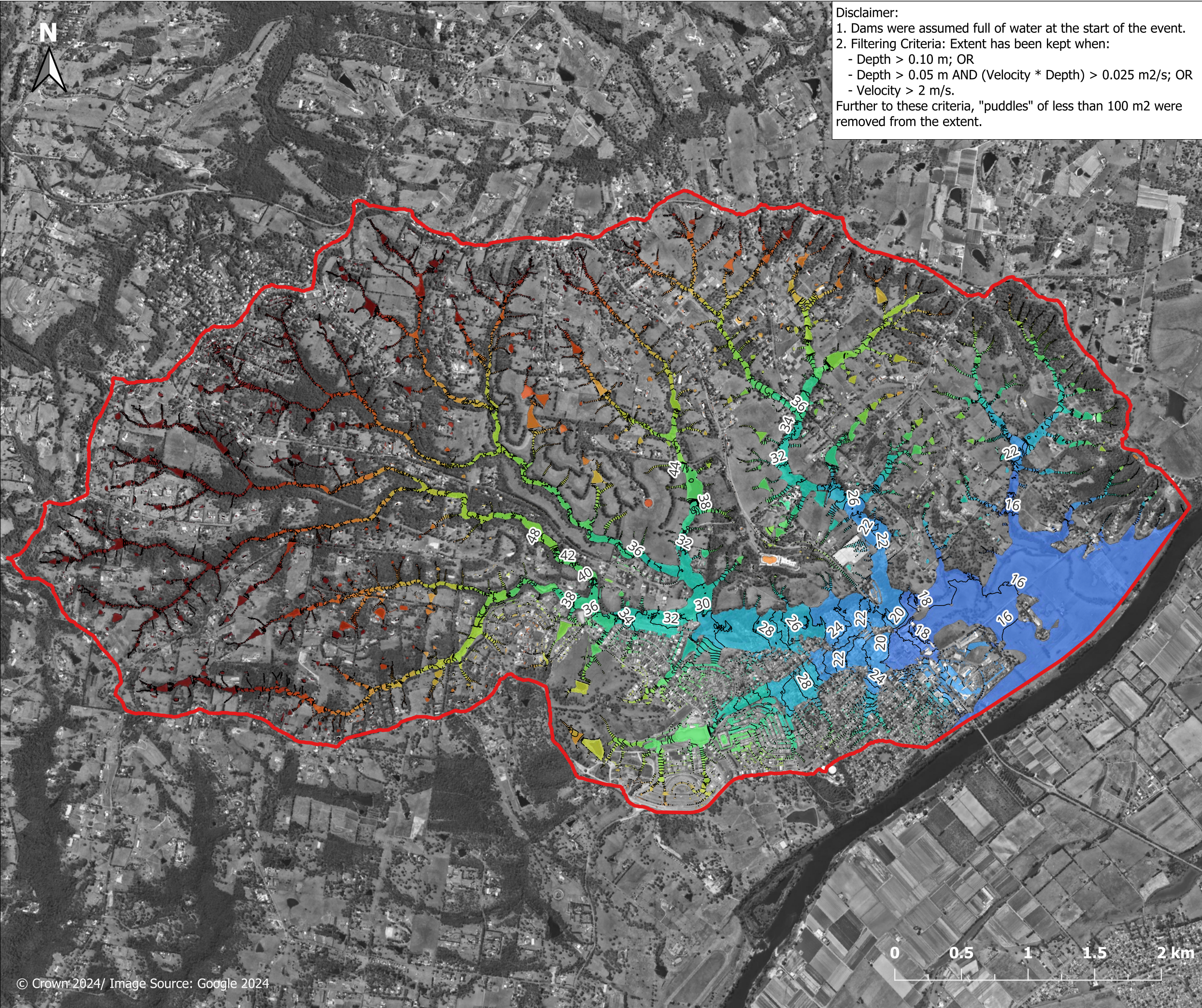
Peak water level (m AHD)

<= 5	50 - 55
5 - 10	55 - 60
10 - 15	60 - 65
15 - 20	65 - 70
20 - 25	70 - 75
25 - 30	75 - 80
30 - 35	80 - 85
35 - 40	85 - 90
40 - 45	90 - 95
45 - 50	> 95



Report MHL3008
Redbank Creek Flood
Study





Disclaimer:

1. Dams were assumed full of water at the start of the event.
 2. Filtering Criteria: Extent has been kept when:
 - Depth > 0.10 m; OR
 - Depth > 0.05 m AND (Velocity * Depth) > 0.025 m²/s; OR
 - Velocity > 2 m/s.
- Further to these criteria, "puddles" of less than 100 m² were removed from the extent.

Figure E.1.10.1

**Peak flood level
1 in 5000 AEP event
North Richmond
Overview**

Legend

- Study area
- 1 m contour

Peak water level (m AHD)

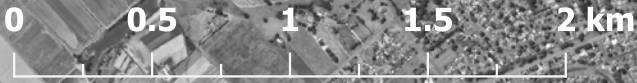
<ul style="list-style-type: none"> <= 5 5 - 10 10 - 15 15 - 20 20 - 25 25 - 30 30 - 35 35 - 40 40 - 45 45 - 50 	<ul style="list-style-type: none"> 50 - 55 55 - 60 60 - 65 65 - 70 70 - 75 75 - 80 80 - 85 85 - 90 90 - 95 > 95
---	--

Report MHL3008

**Redbank Creek Flood
Study**



**Manly
Hydraulics
Laboratory**



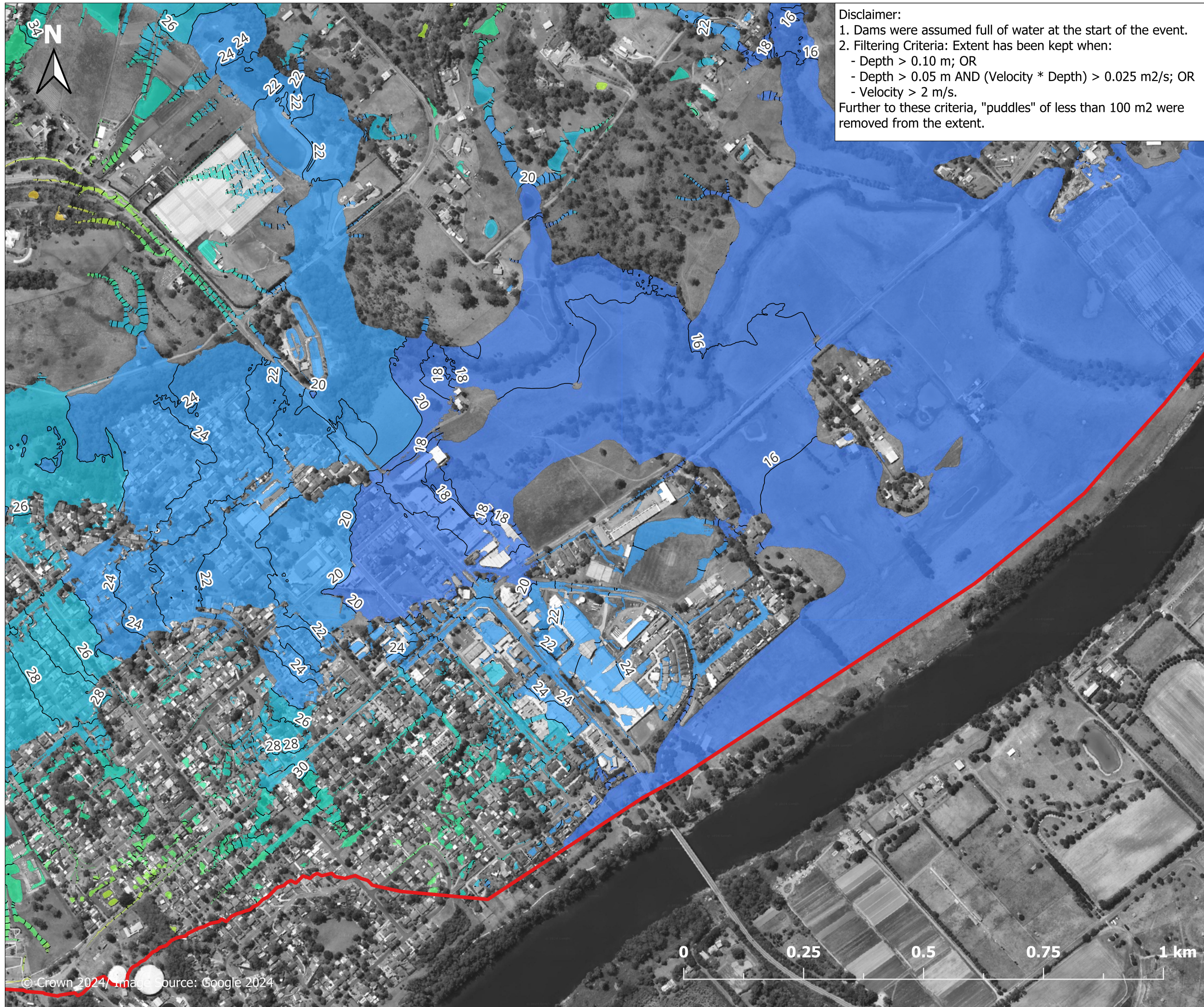


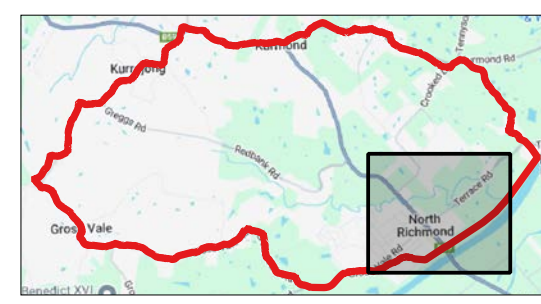
Figure E.1.10.2
Peak flood level
1 in 5000 AEP event
East of North
Richmond

Legend

Study area (red outline)
 1 m contour (black line)

Peak water level (m AHD)

≤ 5	50 - 55
5 - 10	55 - 60
10 - 15	60 - 65
15 - 20	65 - 70
20 - 25	70 - 75
25 - 30	75 - 80
30 - 35	80 - 85
35 - 40	85 - 90
40 - 45	90 - 95
45 - 50	> 95



Report MHL3008
Redbank Creek Flood
Study



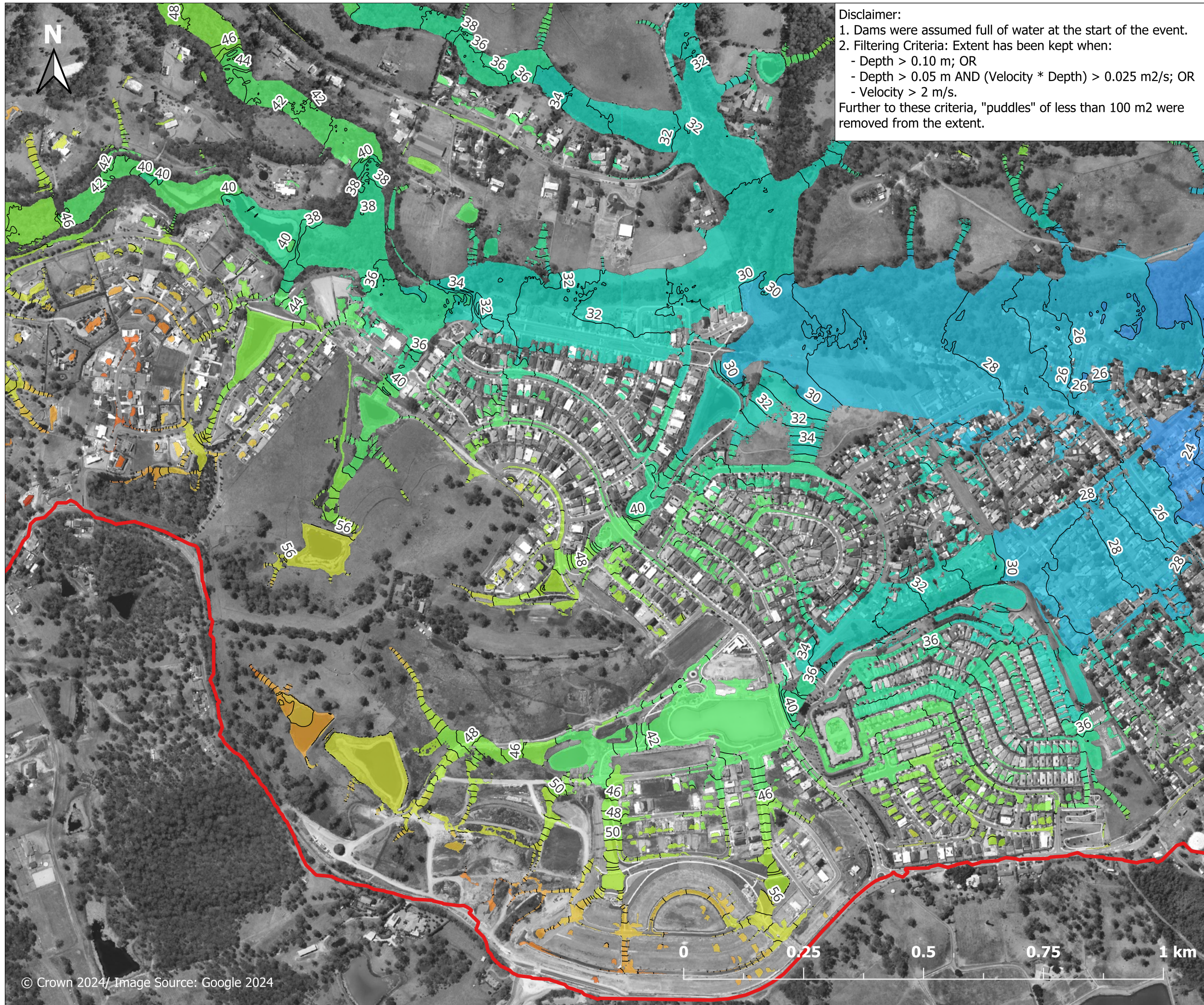


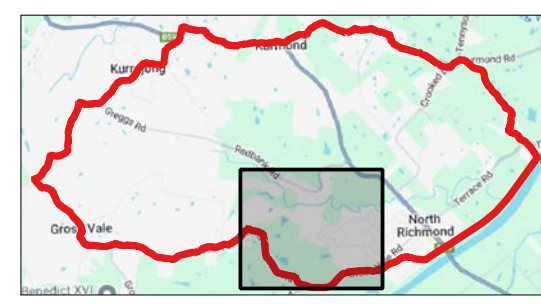
Figure E.1.10.3
Peak flood level
1 in 5000 AEP event
West of North
Richmond

Legend

- Study area
- 1 m contour

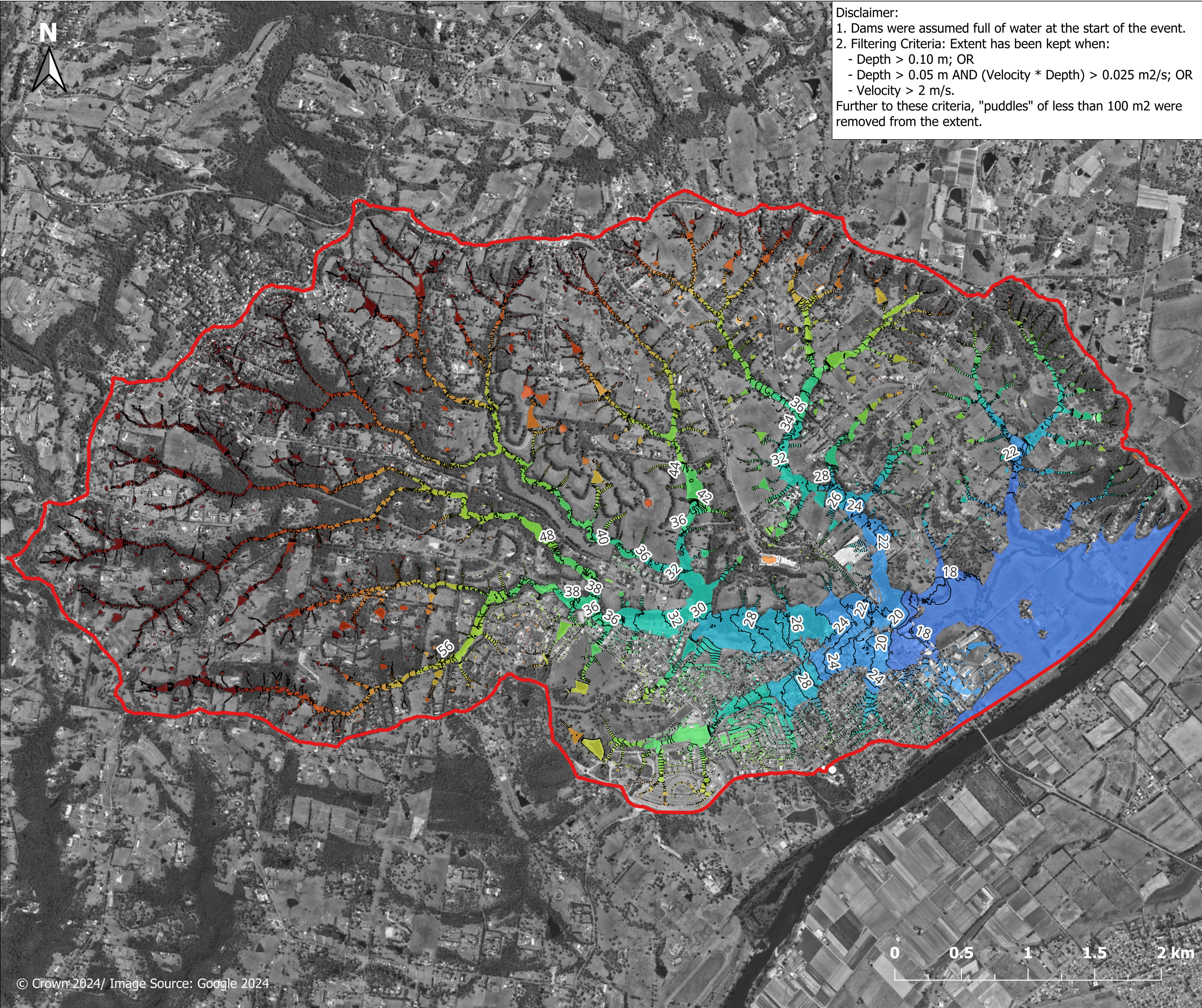
Peak water level (m AHD)

 <= 5	 50 - 55
 5 - 10	 55 - 60
 10 - 15	 60 - 65
 15 - 20	 65 - 70
 20 - 25	 70 - 75
 25 - 30	 75 - 80
 30 - 35	 80 - 85
 35 - 40	 85 - 90
 40 - 45	 90 - 95
 45 - 50	 > 95



Report MHL3008
Redbank Creek Flood
Study





Disclaimer:
 1. Dams were assumed full of water at the start of the event.
 2. Filtering Criteria: Extent has been kept when:
 - Depth > 0.10 m; OR
 - Depth > 0.05 m AND (Velocity * Depth) > 0.025 m²/s; OR
 - Velocity > 2 m/s.
 Further to these criteria, "puddles" of less than 100 m² were removed from the extent.

Figure E.1.11.1
Peak flood level
PMF event
North Richmond
Overview

Legend

Study area
 1 m contour

Peak water level (m AHD)

<ul style="list-style-type: none"> <= 5 5 - 10 10 - 15 15 - 20 20 - 25 25 - 30 30 - 35 35 - 40 40 - 45 45 - 50 	<ul style="list-style-type: none"> 50 - 55 55 - 60 60 - 65 65 - 70 70 - 75 75 - 80 80 - 85 85 - 90 90 - 95 > 95
---	--