

Hawkesbury Waste Management Facility - Yearly Summary for 2019/2020

Licence number - 5293

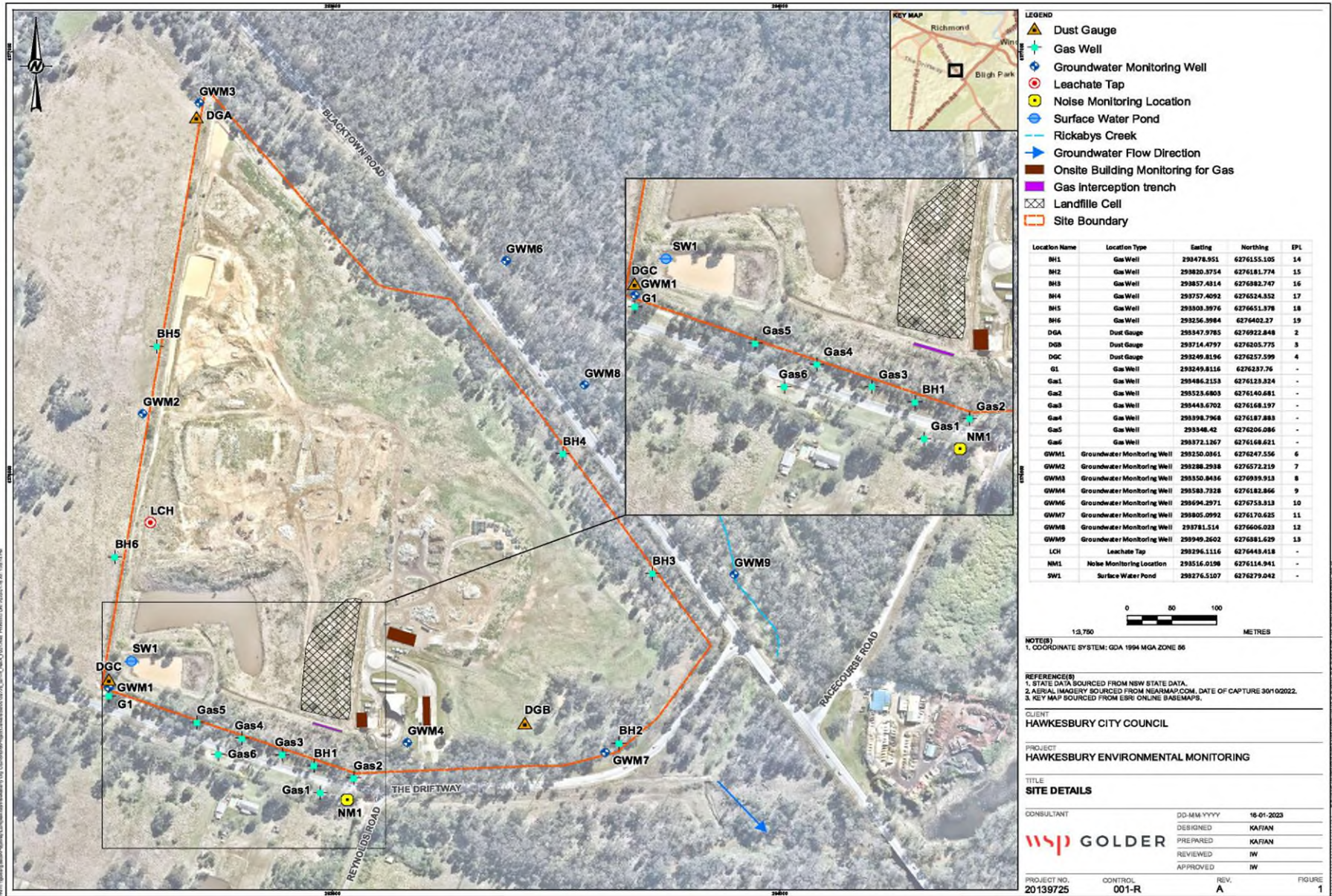
Hawkesbury Waste Management Facility - The Driftway, South WindsorNSW 2756 Licencee - Hawkesbury City Council

Public Register : <https://www.epa.nsw.gov.au/licensing-and-regulation/public-registers>

Licence Period - 25th July - 24th July

LOR = Limit of Reporting

NT = Not Tested



Waste Management Facility - 5293

Monitoring Point 14 - BH1

Pollutant	Unit	Monitoring Frequency	Date Sampled	Date Sampled	Date Sampled	Date Sampled	Date Sampled	Date Sampled
			12/08/2019	12/09/2019	11/10/2019	11/11/2019	9/12/2019	10/01/2020
			Date Obtained	Date Obtained	Date Obtained	Date Obtained	Date Obtained	Date Obtained
Sample Code	Sample Code	Sample Code	Sample Code	Sample Code	Sample Code			
Carbon Dioxide	% v/v	Monthly	2.9	27.8	26.1	26.8	26.2	24.9
Methane	% v/v	Monthly	0	14.2	12.6	13.8	12.4	9.3

Date Sampled	Date Sampled	Date Sampled	Date Sampled	Date Sampled	Date Sampled			
11/02/2020	9/03/2020	7/04/2020	11/05/2020	10/06/2020	17/07/2020			
Date Obtained	Date Obtained	Date Obtained	Date Obtained	Date Obtained	Date Obtained			
Sample Code	Sample Code	Sample Code	Sample Code	Sample Code	Sample Code			
Carbon Dioxide	% v/v	Monthly	8.5	9.9	19	11.1	2.9	0.4
Methane	% v/v	Monthly	0.1	10.2	3.9	0.6	<0.1	<0.1

Monitoring Point 15 - BH2

Pollutant	Unit	Monitoring Frequency	Date Sampled	Date Sampled
			11/10/2019	11/05/2020
			Date Obtained	Date Obtained
Sample Code	Sample Code			
Carbon Dioxide	% v/v	Every 6 Months	4.3	6.3
Methane	% v/v	Every 6 Months	0	0

Monitoring Point 16 - BH3

Pollutant	Unit	Monitoring Frequency	Date Sampled	Date Sampled
			11/10/2019	11/05/2020
			Date Obtained	Date Obtained
Sample Code	Sample Code			
Carbon Dioxide	% v/v	Every 6 Months	5.2	7.5
Methane	% v/v	Every 6 Months	0	0

Waste Management Facility - 5293

Monitoring Point 17 - BH4

Pollutant	Unit	Monitoring Frequency	Date Sampled	Date Sampled
			11/10/2019	11/05/2020
			Date Obtained	Date Obtained
Sample Code	Sample Code			
Carbon Dioxide	% v/v	Every 6 Months	6.7	16.3
Methane	% v/v	Every 6 Months	0	0.1

Monitoring Point 18 - BH5

Pollutant	Unit	Monitoring Frequency	Date Sampled	Date Sampled	Date Sampled	Date Sampled	Date Sampled	Date Sampled
			12/08/2019	12/09/2019	11/10/2019	11/11/2019	9/12/2019	10/01/2020
			Date Obtained	Date Obtained	Date Obtained	Date Obtained	Date Obtained	Date Obtained
Sample Code	Sample Code	Sample Code	Sample Code	Sample Code	Sample Code			
Carbon Dioxide	% v/v	Monthly	7.3	3.7	15.7	5.8	4.2	7.8
Methane	% v/v	Monthly	0	0.3	1.2	0.1	0	0.3

Pollutant	Unit	Monitoring Frequency	Date Sampled	Date Sampled	Date Sampled	Date Sampled	Date Sampled	Date Sampled
			11/02/2020	9/03/2020	7/04/2020	11/05/2020	10/06/2020	17/07/2020
			Date Obtained	Date Obtained	Date Obtained	Date Obtained	Date Obtained	Date Obtained
Sample Code	Sample Code	Sample Code	Sample Code	Sample Code	Sample Code			
Carbon Dioxide	% v/v	Monthly	22.6	15.3	16.9	0.4	0.1	19
Methane	% v/v	Monthly	17.4	11.4	15.8	0	<0.1	19.4

Monitoring Point 19 - BH6

Pollutant	Unit	Monitoring Frequency	Date Sampled	Date Sampled	Date Sampled	Date Sampled	Date Sampled	Date Sampled
			12/08/2019	12/09/2019	11/10/2019	11/11/2019	9/12/2019	10/01/2020
			Date Obtained	Date Obtained	Date Obtained	Date Obtained	Date Obtained	Date Obtained
Sample Code	Sample Code	Sample Code	Sample Code	Sample Code	Sample Code			
Carbon Dioxide	% v/v	Monthly	4.1	3.7	6.1	5.4	2.8	2.1
Methane	% v/v	Monthly	0	0	0	0	0	0

Waste Management Facility - 5293

			Date Sampled	Date Sampled	Date Sampled	Date Sampled	Date Sampled	Date Sampled
			11/02/2020	9/03/2020	7/04/2020	11/05/2020	10/06/2020	17/07/2020
			Date Obtained	Date Obtained	Date Obtained	Date Obtained	Date Obtained	Date Obtained
			Sample Code	Sample Code	Sample Code	Sample Code	Sample Code	Sample Code
Carbon Dioxide	% v/v	Monthly	3.6	1.4	9.9	1.2	11.8	15.1
Methane	% v/v	Monthly	0	0	0	0	<0.1	2.8

Monitoring Point 20 - G1

Pollutant	Unit	Monitoring Frequency	Date Sampled	Date Sampled	Date Sampled	Date Sampled	Date Sampled	Date Sampled
			12/08/2019	12/09/2019	11/10/2019	11/11/2019	9/12/2019	10/01/2020
			Date Obtained	Date Obtained	Date Obtained	Date Obtained	Date Obtained	Date Obtained
			Sample Code	Sample Code	Sample Code	Sample Code	Sample Code	Sample Code
Carbon Dioxide	% v/v	Monthly	<i>Well not installed</i>					
Methane	% v/v	Monthly						

			Date Sampled	Date Sampled	Date Sampled	Date Sampled	Date Sampled	Date Sampled
			11/02/2020	9/03/2020	7/04/2020	11/05/2020	10/06/2020	17/07/2020
			Date Obtained	Date Obtained	Date Obtained	Date Obtained	Date Obtained	Date Obtained
			Sample Code	Sample Code	Sample Code	Sample Code	Sample Code	Sample Code
Carbon Dioxide	% v/v	Monthly	<i>Well not installed</i>					
Methane	% v/v	Monthly						

Point 21 - Gas2

Pollutant	Unit	Monitoring Frequency	Date Sampled	Date Sampled	Date Sampled	Date Sampled	Date Sampled	Date Sampled
			12/08/2019	12/09/2019	11/10/2019	11/11/2019	9/12/2019	10/01/2020
			Date Obtained	Date Obtained	Date Obtained	Date Obtained	Date Obtained	Date Obtained
			Sample Code	Sample Code	Sample Code	Sample Code	Sample Code	Sample Code
Carbon Dioxide	% v/v	Monthly	<i>Well not installed</i>					
Methane	% v/v	Monthly						

Waste Management Facility - 5293

Date Sampled	Date Sampled	Date Sampled	Date Sampled	Date Sampled	Date Sampled
11/02/2020	9/03/2020	7/04/2020	11/05/2020	10/06/2020	17/07/2020
Date Obtained	Date Obtained	Date Obtained	Date Obtained	Date Obtained	Date Obtained
Sample Code	Sample Code	Sample Code	Sample Code	Sample Code	Sample Code

Carbon Dioxide	% v/v	Monthly
Methane	% v/v	Monthly

Well not installed

Point 22 - Gas3

Pollutant	Unit	Monitoring Frequency	Date Sampled	Date Sampled	Date Sampled	Date Sampled	Date Sampled	Date Sampled
			12/08/2019	12/09/2019	11/10/2019	11/11/2019	9/12/2019	10/01/2020
			Date Obtained	Date Obtained	Date Obtained	Date Obtained	Date Obtained	Date Obtained
			Sample Code	Sample Code	Sample Code	Sample Code	Sample Code	Sample Code
Carbon Dioxide	% v/v	Monthly	<i>Well not installed</i>					
Methane	% v/v	Monthly						

Date Sampled	Date Sampled	Date Sampled	Date Sampled	Date Sampled	Date Sampled
11/02/2020	9/03/2020	7/04/2020	11/05/2020	10/06/2020	17/07/2020
Date Obtained	Date Obtained	Date Obtained	Date Obtained	Date Obtained	Date Obtained
Sample Code	Sample Code	Sample Code	Sample Code	Sample Code	Sample Code

Carbon Dioxide	% v/v	Monthly
Methane	% v/v	Monthly

Well not installed

Point 23 - Gas4

Pollutant	Unit	Monitoring Frequency	Date Sampled	Date Sampled	Date Sampled	Date Sampled	Date Sampled	Date Sampled
			12/08/2019	12/09/2019	11/10/2019	11/11/2019	9/12/2019	10/01/2020
			Date Obtained	Date Obtained	Date Obtained	Date Obtained	Date Obtained	Date Obtained
			11/02/2020	9/03/2020	7/04/2020	11/05/2020	10/06/2020	17/07/2020
			Sample Code	Sample Code	Sample Code	Sample Code	Sample Code	
Carbon Dioxide	% v/v	Monthly	<i>Well not installed</i>					
Methane	% v/v	Monthly						

Well not installed

Waste Management Facility - 5293

Date Sampled	Date Sampled	Date Sampled	Date Sampled	Date Sampled	Date Sampled
11/02/2020	9/03/2020	7/04/2020	11/05/2020	10/06/2020	17/07/2020
Date Obtained	Date Obtained	Date Obtained	Date Obtained	Date Obtained	Date Obtained
Sample Code	Sample Code	Sample Code	Sample Code	Sample Code	Sample Code

Carbon Dioxide	% v/v	Monthly
Methane	% v/v	Monthly

Well not installed

Point 24- Gas 6

Pollutant	Unit	Monitoring Frequency						
			Date Sampled	Date Sampled	Date Sampled	Date Sampled	Date Sampled	Date Sampled
			12/08/2019	12/09/2019	11/10/2019	11/11/2019	9/12/2019	10/01/2020
			Date Obtained	Date Obtained	Date Obtained	Date Obtained	Date Obtained	Date Obtained
Sample Code	Sample Code	Sample Code	Sample Code	Sample Code	Sample Code			
Carbon Dioxide	% v/v	Monthly						
Methane	% v/v	Monthly						

Date Sampled	Date Sampled	Date Sampled	Date Sampled	Date Sampled	Date Sampled
12/08/2019	12/09/2019	11/10/2019	11/11/2019	9/12/2019	10/01/2020
Date Obtained	Date Obtained	Date Obtained	Date Obtained	Date Obtained	Date Obtained
Sample Code	Sample Code	Sample Code	Sample Code	Sample Code	Sample Code

Well not installed

Date Sampled	Date Sampled	Date Sampled	Date Sampled	Date Sampled	Date Sampled
11/02/2020	9/03/2020	7/04/2020	11/05/2020	10/06/2020	17/07/2020
Date Obtained	Date Obtained	Date Obtained	Date Obtained	Date Obtained	Date Obtained
Sample Code	Sample Code	Sample Code	Sample Code	Sample Code	Sample Code

Carbon Dioxide	% v/v	Monthly
Methane	% v/v	Monthly

Well not installed

Point 25 - Gas interception trench

Pollutant	Unit	Monitoring Frequency						
			Date Sampled	Date Sampled	Date Sampled	Date Sampled	Date Sampled	Date Sampled
			12/08/2019	12/09/2019	11/10/2019	11/11/2019	9/12/2019	10/01/2020
			Date Obtained	Date Obtained	Date Obtained	Date Obtained	Date Obtained	Date Obtained
Sample Code	Sample Code	Sample Code	Sample Code	Sample Code	Sample Code			
Carbon Dioxide	% v/v	Monthly						
Methane	% v/v	Monthly						

Date Sampled	Date Sampled	Date Sampled	Date Sampled	Date Sampled	Date Sampled
12/08/2019	12/09/2019	11/10/2019	11/11/2019	9/12/2019	10/01/2020
Date Obtained	Date Obtained	Date Obtained	Date Obtained	Date Obtained	Date Obtained
Sample Code	Sample Code	Sample Code	Sample Code	Sample Code	Sample Code

Well not installed

Waste Management Facility - 5293

Date Sampled	Date Sampled	Date Sampled	Date Sampled	Date Sampled	Date Sampled
11/02/2020	9/03/2020	7/04/2020	11/05/2020	10/06/2020	17/07/2020
Date Obtained	Date Obtained	Date Obtained	Date Obtained	Date Obtained	Date Obtained
Sample Code	Sample Code	Sample Code	Sample Code	Sample Code	Sample Code

Carbon Dioxide	% v/v	Monthly
Methane	% v/v	Monthly

Well not installed

RW1

Pollutant	Unit	Monitoring Frequency						
			Date Sampled	Date Sampled	Date Sampled	Date Sampled	Date Sampled	Date Sampled
			12/08/2019	12/09/2019	11/10/2019	11/11/2019	9/12/2019	10/01/2020
			Date Obtained	Date Obtained	Date Obtained	Date Obtained	Date Obtained	Date Obtained
Sample Code	Sample Code	Sample Code	Sample Code	Sample Code	Sample Code			
Carbon Dioxide	% v/v	Monthly						
Methane	% v/v	Monthly						

Date Sampled	Date Sampled	Date Sampled	Date Sampled	Date Sampled	Date Sampled
12/08/2019	12/09/2019	11/10/2019	11/11/2019	9/12/2019	10/01/2020
Date Obtained	Date Obtained	Date Obtained	Date Obtained	Date Obtained	Date Obtained
Sample Code	Sample Code	Sample Code	Sample Code	Sample Code	Sample Code

Well not installed

Date Sampled	Date Sampled	Date Sampled	Date Sampled	Date Sampled	Date Sampled
11/02/2020	9/03/2020	7/04/2020	11/05/2020	10/06/2020	17/07/2020
Date Obtained	Date Obtained	Date Obtained	Date Obtained	Date Obtained	Date Obtained
Sample Code	Sample Code	Sample Code	Sample Code	Sample Code	Sample Code

Carbon Dioxide	% v/v	Monthly
Methane	% v/v	Monthly

Well not installed

Waste Management Facility - 5293

Monitoring Point 2 - DGA

Pollutant	Unit	Monitoring Frequency	Start Date	Start Date	Start Date	Start Date
			12/07/2019	15/10/2019	18/01/2020	7/04/2020
			Data Collection Date	Data Collection Date	Data Collection Date	Data Collection Date
			12/08/2019	11/11/2019	14/02/2020	11/05/2020
Sample Code	Sample Code	Sample Code	Sample Code			
Particules deposited Matter	g/m ² /month	Quarterly	0.5	1.9	8	0.9

Monitoring Point 3 - DGB

Pollutant	Unit	Monitoring Frequency	Start Date	Start Date	Start Date	Start Date
			12/07/2019	15/10/2019	18/01/2020	7/04/2020
			Data Collection Date	Data Collection Date	Data Collection Date	Data Collection Date
			12/08/2019	11/11/2019	14/02/2020	11/05/2020
Sample Code	Sample Code	Sample Code	Sample Code			
Particules deposited Matter	g/m ² /month	Quarterly	1.2	2.1	6.4	0.9

Monitoring Point 4 - DGC

Pollutant	Unit	Monitoring Frequency	Start Date	Start Date	Start Date	Start Date
			12/07/2019	15/10/2019	18/01/2020	7/04/2020
			Data Collection Date	Data Collection Date	Data Collection Date	Data Collection Date
			12/08/2019	11/11/2019	14/02/2020	11/05/2020
Sample Code	Sample Code	Sample Code	Sample Code			
Particules deposited Matter	g/m ² /month	Quarterly	0.7	1.5	6.7	1.4

Waste Management Facility - 5293

Monitoring Point 1 - LCH

Pollutant	Unit	Monitoring Frequency	Date Sampled	Date Sampled	Date Sampled	Date Sampled
			13/08/2019	13/11/2019	14/02/2020	11/05/2020
			Date Data Obtained	Date Data Obtained	Date Data Obtained	Date Data Obtained
			Sample Code	Sample Code	Sample Code	Sample Code
Alkalinity (as calcium carbonate)	mg/L	Quarterly	4440	4110	3130	1580
Aluminium	mg/L	Yearly				<0.1
Arsenic	mg/L	Yearly				<0.01
Barium	mg/L	Yearly				0.39
Benzene	mg/L	Yearly				0.002
Biochemical oxygen demand	mg/L	Yearly				21
Cadmium	mg/L	Yearly				<0.0002
Calcium	mg/L	Quarterly	76	71	55	38
Chemical oxygen demand	mg/L	Yearly				500
Chloride	mg/L	Quarterly	2290	2110	1640	820
Chromium (hexavalent)	mg/L	Yearly				<0.01
Cobalt	mg/L	Yearly				<0.01
Conductivity	µS/cm	Quarterly	14,600	13,100	10,700	5150
Copper	mg/L	Yearly				0.015
Ethyl benzene	mg/L	Yearly				<0.002
Fluoride	mg/L	Yearly	0.81	0.56	0.44	0.19
Lead	mg/L	Yearly				<0.001
Magnesium	mg/L	Quarterly	300	265	210	100
Manganese	mg/L	Yearly				0.27
Mercury	mg/L	Yearly				<0.0001
Nitrate	mg/L	Quarterly	<0.1	<0.1	<0.1	0.4
Nitrite	mg/L	Quarterly	0.32	<0.1	<0.1	<0.1
Nitrogen (ammonia)	mg/L	Quarterly	400	330	310	125
Organochlorine pesticides	mg/L	Yearly				<LOR
Orgnochlorine pesticides	mg/L	Yearly				<LOR
pH	pH	Quarterly	7.50	7.50	7.40	7.6
Phosphate	mg/L	Yearly	8.7	8	5.5	0.52
Phosphorus (total)	mg/L	Quarterly	3.9	3.8	3.6	8.4
Potassium	mg/L	Quarterly	350	285	220	97
Sodium	mg/L	Quarterly	2080	2010	1480	785
Sulfate	mg/L	Quarterly	85	125	105	57
Toluene	mg/L	Yearly				<0.002
Total chromium	mg/L	Yearly				<0.01
Total dissolved solids	mg/L	Quarterly	8410	7750	6120	3010
Total Iron	mg/L	Yearly				0.61
Total organic carbon	mg/L	Yearly				240
Total petroleum hydrocarbons C6-C9	mg/L	Yearly				NT
C10-C14	mg/L	Yearly				NT
C15-C28	mg/L	Yearly				NT
C29-C36	mg/L	Yearly				NT
C10-C36 (Sum)	mg/L	Yearly				NT
Total Phenolics	mg/L	Yearly				<0.01
Xylene	mg/L	Yearly				<0.002
Zinc	mg/L	Yearly				0.035

Waste Management Facility - 5293

Monitoring Point 5 - SW1

Pollutant	Unit	Monitoring Frequency	Date Sampled	Date Sampled	Date Sampled	Date Sampled
			13/08/2019	13/11/2019	14/02/2020	11/05/2020
			Date Data Obtained	Date Data Obtained	Date Data Obtained	Date Data Obtained
			Sample Code	Sample Code	Sample Code	Sample Code
Alkalinity (as calcium carbonate)	mg/L	Quarterly	550	11	11	295
Ammonia	mg/L	Quarterly	0.3	0.6	0.6	1.2
Biochemical oxygen demand	mg/L	Quarterly	4	<2	<2	4
Sulfate	mg/L	Quarterly	170	110	110	73
Total Phenolics	mg/L	Yearly				NT

Waste Management Facility - 5293

Monitoring Point 6 - GWM1

Pollutant	Unit	Monitoring frequency	Date Sampled	Date Sampled	Date Sampled	Date Sampled
			13/08/2019	13/11/2019	14/02/2020	11/05/2020
			Date Data Obtained	Date Data Obtained	Date Data Obtained	Date Data Obtained
			13/08/2019	13/11/2019	14/02/2020	11/05/2020
Sample Code	Sample Code	Sample Code	Sample Code			
Alkalinity (as calcium carbonate)	mg/L	Quarterly	360	345	335	330
Aluminium	mg/L	Yearly				<0.1
Ammonia	mg/L	Quarterly	<0.1	<0.1	<0.1	<0.1
Arsenic	mg/L	Yearly				<0.1
Barium	mg/L	Yearly				0.06
Benzene	mg/L	Yearly				<0.001
Biochemical oxygen demand	mg/L	Yearly				<2
Cadmium	mg/L	Yearly				<0.0002
Calcium	mg/L	Quarterly	95	88	83	82
Carbonate	mg/L	Quarterly	NT	NT	NT	NT
Chemical oxygen demand	mg/L	Yearly				<2
Chloride	mg/L	Quarterly	4430	4350	4390	4320
Chlorinated volatile compound	mg/L	Yearly				NT
Chromium (hexavalent)	mg/L	Yearly				<0.01
Cobalt	mg/L	Yearly				<0.01
Conductivity	µS/cm	Quarterly	12200	12300	12400	12300
Copper	mg/L	Yearly				<0.001
Ethyl benzene	mg/L	Yearly				<0.002
Fluoride	mg/L	Yearly	0.49	0.46	0.45	0.47
Lead	mg/L	Yearly				<0.001
Magnesium	mg/L	Quarterly	355	370	335	350
Manganese	mg/L	Yearly				0.14
Mercury	mg/L	Yearly				<0.0001
Nitrogen Oxides	mg/L	Yearly				<0.1
Organochlorine pesticides	mg/L	Yearly				<LOR
Organophosphate pesticides	mg/L	Yearly				<LOR
pH	pH	Quarterly	6.2	6.4	6.5	6.4
Phosphate	mg/L	Yearly	0.12	0.15	0.18	0.12
Phosphorus (Total)	mg/L	Quarterly	0.27	0.17	0.48	0.18
Potassium	mg/L	Quarterly	14	15	25	19
Salinity	mg/L	Quarterly	7810	7880	7940	7880
Sodium	mg/L	Quarterly	2430	2390	2350	2410
Sulfate	mg/L	Quarterly	285	280	295	285
Toluene	mg/L	Yearly				<0.002
Total chromium	mg/L	Yearly				<0.01
Total dissolved solids	mg/L	Quarterly	7720	7650	7770	7640
Total organic carbon	mg/L	Yearly				<1
Total petroleum hydrocarbons C6-C9	mg/L	Yearly				NT
C10-C14	mg/L	Yearly				NT
C15-C28	mg/L	Yearly				NT
C29-C36	mg/L	Yearly				NT
C10-C36 (Sum)	mg/L	Yearly				NT
Total Phenolics	mg/L	Yearly				<0.01
Xylene	mg/L	Yearly				<0.002
Zinc	mg/L	Yearly				0.013

Waste Management Facility - 5293

Monitoring Point 7 - GWM2

Pollutant	Unit	Monitoring frequency	Date Sampled	Date Sampled	Date Sampled	Date Sampled
			13/08/2019	13/11/2019	14/02/2020	11/05/2020
			Date Data Obtained	Date Data Obtained	Date Data Obtained	Date Data Obtained
			Sample Code	Sample Code	Sample Code	Sample Code
Alkalinity (as calcium carbonate)	mg/L	Quarterly	350	345	340	335
Aluminium	mg/L	Yearly				<0.1
Ammonia	mg/L	Quarterly	<0.1	<0.1	<0.1	<0.1
Arsenic	mg/L	Yearly				<0.01
Barium	mg/L	Yearly				0.06
Benzene	mg/L	Yearly				<0.001
Biochemical oxygen demand	mg/L	Yearly				3
Cadmium	mg/L	Yearly				<0.0002
Calcium	mg/L	Quarterly	98	100	96	105.00
Carbonate	mg/L	Quarterly	NT	NT	NT	NT
Chemical oxygen demand	mg/L	Yearly				12
Chloride	mg/L	Quarterly	4750	4690	4770	4660
Chlorinated volatile compound	mg/L	Yearly				NT
Chromium (hexavalent)	mg/L	Yearly				<0.01
Cobalt	mg/L	Yearly				<0.01
Conductivity	µS/cm	Quarterly	13100	13200	12800	13000
Copper	mg/L	Yearly				<0.01
Ethyl benzene	mg/L	Yearly				<0.002
Fluoride	mg/L	Yearly	0.4	0.38	0.37	0.37
Lead	mg/L	Yearly				<0.001
Magnesium	mg/L	Quarterly	340	350	325	340
Manganese	mg/L	Yearly				0.25
Mercury	mg/L	Yearly				<0.0001
Nitrogen Oxides	mg/L	Yearly				<0.1
Organochlorine pesticides	mg/L	Yearly				<LOR
Organophosphate pesticides	mg/L	Yearly				<LOR
pH	pH	Quarterly	6.3	6.3	6.3	6.4
Phosphate	mg/L	Yearly	0.13	0.16	0.2	0.17
Phosphorus (Total)	mg/L	Quarterly	<0.1	<0.1	0.21	<0.1
Potassium	mg/L	Quarterly	10	12	16.00	12.00
Salinity	mg/L	Quarterly	8430	8500	8220	8.36
Sodium	mg/L	Quarterly	2630	2610	2480	2550.00
Sulfate	mg/L	Quarterly	265	260	275	265
Toluene	mg/L	Yearly				<0.002
Total chromium	mg/L	Yearly				<0.01
Total dissolved solids	mg/L	Quarterly	8250	8240	7920	8070
Total organic carbon	mg/L	Yearly				<1
Total petroleum hydrocarbons C6-C9	mg/L	Yearly				NT
C10-C14	mg/L	Yearly				NT
C15-C28	mg/L	Yearly				NT
C29-C36	mg/L	Yearly				NT
C10-C36 (Sum)	mg/L	Yearly				NT
Total Phenolics	mg/L	Yearly				<0.01
Xylene	mg/L	Yearly				<0.002
Zinc	mg/L	Yearly				0.015

Waste Management Facility - 5293

Monitoring Point 8 - GWM3

Pollutant	Unit	Monitoring frequency	Date Sampled	Date Sampled	Date Sampled	Date Sampled
			Date Data Obtained	Date Data Obtained	Date Data Obtained	Date Data Obtained
			Sample Code	Sample Code	Sample Code	Sample Code
Alkalinity (as calcium carbonate)	mg/L	Quarterly	560	560	560	555
Aluminium	mg/L	Yearly				<0.1
Ammonia	mg/L	Quarterly	<0.1	<0.1	<0.1	<0.1
Arsenic	mg/L	Yearly				<0.01
Barium	mg/L	Yearly				0.086
Benzene	mg/L	Yearly				<0.001
Biochemical oxygen demand	mg/L	Yearly				2
Cadmium	mg/L	Yearly				<0.0002
Calcium	mg/L	Quarterly	84	78	75	74
Carbonate	mg/L	Quarterly	NT	NT	NT	NT
Chemical oxygen demand	mg/L	Yearly				22
Chloride	mg/L	Quarterly	7270	7150	7350	7100
Chlorinated volatile compound	mg/L	Yearly				NT
Chromium (hexavalent)	mg/L	Yearly				<0.01
Cobalt	mg/L	Yearly				<0.01
Conductivity	µS/cm	Quarterly	20800	20500	21500	20500
Copper	mg/L	Yearly				0.001
Ethyl benzene	mg/L	Yearly				<0.002
Fluoride	mg/L	Yearly	0.3	0.29	0.26	0.28
Lead	mg/L	Yearly				<0.001
Magnesium	mg/L	Quarterly	580	600	560	595
Manganese	mg/L	Yearly				0.02
Mercury	mg/L	Yearly				<0.0001
Nitrogen Oxides	mg/L	Yearly				<0.1
Organochlorine pesticides	mg/L	Yearly				Under detection limit
Organophosphate pesticides	mg/L	Yearly				Under detection limit
pH	pH	Quarterly	6.4	6.5	6.4	6.4
Phosphate	mg/L	Yearly	<0.1	<0.1	<0.1	<0.1
Phosphorus (Total)	mg/L	Quarterly	<0.1	<0.1	0.2	0.11
Potassium	mg/L	Quarterly	13	15	23	18
Salinity	mg/L	Quarterly	13900	13700	14400	13700
Sodium	mg/L	Quarterly	3940	3900	4040	4070
Sulfate	mg/L	Quarterly	570	605	590	570
Toluene	mg/L	Yearly				<0.002
Total chromium	mg/L	Yearly				<0.01
Total dissolved solids	mg/L	Quarterly	13000	12800	13200	12800
Total organic carbon	mg/L	Yearly				<1
Total petroleum hydrocarbons C6-C9	mg/L	Yearly				NT
C10-C14	mg/L	Yearly				NT
C15-C28	mg/L	Yearly				NT
C29-C36	mg/L	Yearly				NT
C10-C36 (Sum)	mg/L	Yearly				NT
Total Phenolics	mg/L	Yearly				<0.01
Xylene	mg/L	Yearly				<0.002
Zinc	mg/L	Yearly				0.016

Waste Management Facility - 5293

Monitoring Point 9 - GWM4

Pollutant	Unit	Monitoring frequency	Date Sampled	Date Sampled	Date Sampled	Date Sampled
			13/08/2019	13/11/2019	14/02/2020	11/05/2020
			Date Data Obtained	Date Data Obtained	Date Data Obtained	Date Data Obtained
			Sample Code	Sample Code	Sample Code	Sample Code
Alkalinity (as calcium carbonate)	mg/L	Quarterly	100	98	100	82
Aluminium	mg/L	Yearly				<0.1
Ammonia	mg/L	Quarterly	<0.1	<0.1	<0.1	<0.1
Arsenic	mg/L	Yearly				<0.01
Barium	mg/L	Yearly				0.06
Benzene	mg/L	Yearly				<0.001
Biochemical oxygen demand	mg/L	Yearly				3
Cadmium	mg/L	Yearly				<0.0002
Calcium	mg/L	Quarterly	30	26	27	24
Carbonate	mg/L	Quarterly	NT	NT	NT	NT
Chemical oxygen demand	mg/L	Yearly				23
Chloride	mg/L	Quarterly	4160	4090	4240	4070
Chlorinated volatile compound	mg/L	Yearly				NT
Chromium (hexavalent)	mg/L	Yearly				<0.01
Cobalt	mg/L	Yearly				<0.01
Conductivity	µS/cm	Quarterly	11,200	11,100	11,400	11100
Copper	mg/L	Yearly				0.001
Ethyl benzene	mg/L	Yearly				<0.002
Fluoride	mg/L	Yearly	0.16	0.13	0.13	0.12
Lead	mg/L	Yearly				<0.001
Magnesium	mg/L	Quarterly	355	365	345	360
Manganese	mg/L	Yearly				1.5
Mercury	mg/L	Yearly				<0.0001
Nitrogen Oxides	mg/L	Yearly				<0.1
Organochlorine pesticides	mg/L	Yearly				<LOR
Organophosphate pesticides	mg/L	Yearly				<LOR
pH	pH	Quarterly	5.80	5.90	5.80	5.8
Phosphate	mg/L	Yearly	<0.1	<0.1	<0.1	<0.1
Phosphorus (Total)	mg/L	Quarterly	<0.1	<0.1	0.17	<0.1
Potassium	mg/L	Quarterly	8.1	8.7	11	8.6
Salinity	mg/L	Quarterly	7120	7050	7260	7050
Sodium	mg/L	Quarterly	2040	2090	2140	2010
Sulfate	mg/L	Quarterly	145	140	155	140
Toluene	mg/L	Yearly				<0.002
Total chromium	mg/L	Yearly				<0.01
Total dissolved solids	mg/L	Quarterly	6740	6760	6900	6650
Total organic carbon	mg/L	Yearly				<1
Total petroleum hydrocarbons C6-C9	mg/L	Yearly				NT
C10-C14	mg/L	Yearly				NT
C15-C28	mg/L	Yearly				NT
C29-C36	mg/L	Yearly				NT
C10-C36 (Sum)	mg/L	Yearly				NT
Total Phenolics	mg/L	Yearly				<0.01
Xylene	mg/L	Yearly				<0.002
Zinc	mg/L	Yearly				0.025

Waste Management Facility - 5293

Monitoring Point 10 - GWM6

Pollutant	Unit	Monitoring frequency	Date Sampled	Date Sampled	Date Sampled	Date Sampled
			13/08/2019	13/11/2019	14/02/2020	11/05/2020
			Date Data Obtained	Date Data Obtained	Date Data Obtained	Date Data Obtained
			Sample Code	Sample Code	Sample Code	Sample Code
Alkalinity (as calcium carbonate)	mg/L	Quarterly	360	220	160	185
Aluminium	mg/L	Yearly				<0.1
Ammonia	mg/L	Quarterly	<0.1	<0.1	<0.1	<0.1
Arsenic	mg/L	Yearly				<0.01
Barium	mg/L	Yearly				0.15
Benzene	mg/L	Yearly				<0.001
Biochemical oxygen demand	mg/L	Yearly				3
Cadmium	mg/L	Yearly				<0.0002
Calcium	mg/L	Quarterly	160	87	26	100
Carbonate	mg/L	Quarterly	NT	NT	NT	NT
Chemical oxygen demand	mg/L	Yearly				28
Chloride	mg/L	Quarterly	4600	2330	83	1660
Chlorinated volatile compound	mg/L	Yearly				NT
Chromium (hexavalent)	mg/L	Yearly				<0.01
Cobalt	mg/L	Yearly				<0.01
Conductivity	µS/cm	Quarterly	13,600	6,950	520	4620
Copper	mg/L	Yearly				<0.01
Ethyl benzene	mg/L	Yearly				<0.002
Fluoride	mg/L	Yearly	0.27	0.2	0.23	0.14
Lead	mg/L	Yearly				<0.001
Magnesium	mg/L	Quarterly	365	250	13	170
Manganese	mg/L	Yearly				0.07
Mercury	mg/L	Yearly				<0.0001
Nitrogen Oxides	mg/L	Yearly				0.2
Organochlorine pesticides	mg/L	Yearly				<LOR
Organophosphate pesticides	mg/L	Yearly				<LOR
pH	pH	Quarterly	6.20	6.40	6.40	6.5
Phosphate	mg/L	Yearly	0.12	0.12	<0.1	<0.1
Phosphorus (Total)	mg/L	Quarterly	2.4	0.77	2.4	1.1
Potassium	mg/L	Quarterly	13	7.1	3.8	6.2
Salinity	mg/L	Quarterly	8780	4260	280	2760
Sodium	mg/L	Quarterly	2410	1150	80	760
Sulfate	mg/L	Quarterly	205	105	17	71
Toluene	mg/L	Yearly				<0.002
Total chromium	mg/L	Yearly				<0.01
Total dissolved solids	mg/L	Quarterly	7960	4100	325	2900
Total organic carbon	mg/L	Yearly				3
Total petroleum hydrocarbons C6-C9	mg/L	Yearly				NT
C10-C14	mg/L	Yearly				NT
C15-C28	mg/L	Yearly				NT
C29-C36	mg/L	Yearly				NT
C10-C36 (Sum)	mg/L	Yearly				NT
Total Phenolics	mg/L	Yearly				<0.01
Xylene	mg/L	Yearly				<0.002
Zinc	mg/L	Yearly				0.017

Waste Management Facility - 5293

Monitoring Point 11 - GWM7

Pollutant	Unit	Monitoring frequency	Date Sampled	Date Sampled	Date Sampled	Date Sampled
			13/08/2019	13/11/2019	14/02/2020	11/05/2020
			Date Data Obtained	Date Data Obtained	Date Data Obtained	Date Data Obtained
			Sample Code	Sample Code	Sample Code	Sample Code
Alkalinity (as calcium carbonate)	mg/L	Quarterly	185	175	185	150
Aluminium	mg/L	Yearly				<0.1
Ammonia	mg/L	Quarterly	<0.1	<0.1	<0.1	<0.1
Arsenic	mg/L	Yearly				<0.01
Barium	mg/L	Yearly				0.2
Benzene	mg/L	Yearly				<0.001
Biochemical oxygen demand	mg/L	Yearly				<2
Cadmium	mg/L	Yearly				<0.0002
Calcium	mg/L	Quarterly	63	62	59	64
Carbonate	mg/L	Quarterly	NT	NT	NT	NT
Chemical oxygen demand	mg/L	Yearly				3
Chloride	mg/L	Quarterly	3420	3580	3490	3570
Chlorinated volatile compound	mg/L	Yearly				NT
Chromium (hexavalent)	mg/L	Yearly				<0.01
Cobalt	mg/L	Yearly				<0.01
Conductivity	µS/cm	Quarterly	9,550	9,730	9,620	9650
Copper	mg/L	Yearly				<0.001
Ethyl benzene	mg/L	Yearly				<0.002
Fluoride	mg/L	Yearly	0.25	0.22	0.22	0.21
Lead	mg/L	Yearly				<0.001
Magnesium	mg/L	Quarterly	260	265	245	255
Manganese	mg/L	Yearly				0.39
Mercury	mg/L	Yearly				<0.0001
Nitrogen Oxides	mg/L	Yearly				<0.1
Organochlorine pesticides	mg/L	Yearly				<LOR
Organophosphate pesticides	mg/L	Yearly				<LOR
pH	pH	Quarterly	5.90	6.20	6.00	6.1
Phosphate	mg/L	Yearly	0.15	0.17	0.18	0.15
Phosphorus (Total)	mg/L	Quarterly	<0.1	<0.1	0.23	<0.1
Potassium	mg/L	Quarterly	5.7	6.3	8.7	6.6
Salinity	mg/L	Quarterly	6000	6120	6040	6060
Sodium	mg/L	Quarterly	1820	1910	1810	1930
Sulfate	mg/L	Quarterly	105	100	98	96
Toluene	mg/L	Yearly				<0.002
Total chromium	mg/L	Yearly				<0.01
Total dissolved solids	mg/L	Quarterly	5860	5910	5890	6000
Total organic carbon	mg/L	Yearly				<1
Total petroleum hydrocarbons C6-C9	mg/L	Yearly				NT
C10-C14	mg/L	Yearly				NT
C15-C28	mg/L	Yearly				NT
C29-C36	mg/L	Yearly				NT
C10-C36 (Sum)	mg/L	Yearly				NT
Total Phenolics	mg/L	Yearly				<0.01
Xylene	mg/L	Yearly				<0.002
Zinc	mg/L	Yearly				0.016

Waste Management Facility - 5293

Monitoring Point 12 - GWM8

Pollutant	Unit	Monitoring frequency	Date Sampled	Date Sampled	Date Sampled	Date Sampled
			13/08/2019	13/11/2019	14/02/2020	11/05/2020
			Date Data Obtained	Date Data Obtained	Date Data Obtained	Date Data Obtained
			Sample Code	Sample Code	Sample Code	Sample Code
Alkalinity (as calcium carbonate)	mg/L	Quarterly	445	445	415	430
Aluminium	mg/L	Yearly				<0.1
Ammonia	mg/L	Quarterly	<0.1	<0.1	<0.1	<0.1
Arsenic	mg/L	Yearly				<0.01
Barium	mg/L	Yearly				0.16
Benzene	mg/L	Yearly				<0.001
Biochemical oxygen demand	mg/L	Yearly				<2
Cadmium	mg/L	Yearly				<0.0002
Calcium	mg/L	Quarterly	140	155	125	125
Carbonate	mg/L	Quarterly	NT	NT	NT	NT
Chemical oxygen demand	mg/L	Yearly				19
Chloride	mg/L	Quarterly	5270	5390	5070	5250
Chlorinated volatile compound	mg/L	Yearly				NT
Chromium (hexavalent)	mg/L	Yearly				<0.01
Cobalt	mg/L	Yearly				<0.01
Conductivity	µS/cm	Quarterly	14,400	15,000	14,200	14400
Copper	mg/L	Yearly				0.002
Ethyl benzene	mg/L	Yearly				<0.002
Fluoride	mg/L	Yearly	0.33	0.31	0.29	0.31
Lead	mg/L	Yearly				<0.001
Magnesium	mg/L	Quarterly	415	425	385	405
Manganese	mg/L	Yearly				1.2
Mercury	mg/L	Yearly				<0.0001
Nitrogen Oxides	mg/L	Yearly				<0.1
Organochlorine pesticides	mg/L	Yearly				<LOR
Organophosphate pesticides	mg/L	Yearly				<LOR
pH	pH	Quarterly	6.30	6.50	6.30	6.5
Phosphate	mg/L	Yearly	<0.1	<0.1	<0.1	<0.1
Phosphorus (Total)	mg/L	Quarterly	0.1	<0.1	0.24	<0.1
Potassium	mg/L	Quarterly	7.5	9.2	7.1	5.9
Salinity	mg/L	Quarterly	9340	9760	9200	9340
Sodium	mg/L	Quarterly	2700	2740	2620	2820
Sulfate	mg/L	Quarterly	200	195	195	190
Toluene	mg/L	Yearly				<0.002
Total chromium	mg/L	Yearly				<0.01
Total dissolved solids	mg/L	Quarterly	8920	9130	8790	9040
Total organic carbon	mg/L	Yearly				<1
Total petroleum hydrocarbons C6-C9	mg/L	Yearly				NT
C10-C14	mg/L	Yearly				NT
C15-C28	mg/L	Yearly				NT
C29-C36	mg/L	Yearly				NT
C10-C36 (Sum)	mg/L	Yearly				NT
Total Phenolics	mg/L	Yearly				NT
Xylene	mg/L	Yearly				<0.002
Zinc	mg/L	Yearly				0.02

Waste Managment Facility - 5293

Monitoring Point 13 - GWM9

Pollutant	Unit	Monitoring frequency	Date Sampled	Date Sampled	Date Sampled	Date Sampled
			13/08/2019	13/11/2019	14/02/2020	11/05/2020
			Date Data Obtained	Date Data Obtained	Date Data Obtained	Date Data Obtained
			Sample Code	Sample Code	Sample Code	Sample Code
Alkalinity (as calcium carbonate)	mg/L	Quarterly	750	760	740	760
Aluminium	mg/L	Yearly				<0.1
Ammonia	mg/L	Quarterly	<0.1	<0.1	<0.1	<0.1
Arsenic	mg/L	Yearly				<0.01
Barium	mg/L	Yearly				0.09
Benzene	mg/L	Yearly				<0.001
Biochemical oxygen demand	mg/L	Yearly				3
Cadmium	mg/L	Yearly				<0.0002
Calcium	mg/L	Quarterly	92	93	110	115
Carbonate	mg/L	Quarterly	NT	NT	NT	NT
Chemical oxygen demand	mg/L	Yearly				<2
Chloride	mg/L	Quarterly	6240	6640	6500	6810
Chlorinated volatile compound	mg/L	Yearly				NT
Chromium (hexavalent)	mg/L	Yearly				<0.01
Cobalt	mg/L	Yearly				<0.01
Conductivity	µS/cm	Quarterly	18,000	18,700	18,700	19200
Copper	mg/L	Yearly				0.002
Ethyl benzene	mg/L	Yearly				<0.002
Fluoride	mg/L	Yearly	0.57	0.54	0.51	0.56
Lead	mg/L	Yearly				<0.001
Magnesium	mg/L	Quarterly	420	440	430	440
Manganese	mg/L	Yearly				0.21
Mercury	mg/L	Yearly				<0.0001
Nitrogen Oxides	mg/L	Yearly				<0.1
Organochlorine pesticides	mg/L	Yearly				<LOR
Organophosphate pesticides	mg/L	Yearly				<LOR
pH	pH	Quarterly	6.60	6.70	6.60	6.6
Phosphate	mg/L	Yearly	0.31	0.34	0.31	0.31
Phosphorus (Total)	mg/L	Quarterly	1.2	0.5	1.7	0.76
Potassium	mg/L	Quarterly	14	18	18	17
Salinity	mg/L	Quarterly	11900	12400	12400	12800
Sodium	mg/L	Quarterly	3720	3840	3810	3980
Sulfate	mg/L	Quarterly	355	360	375	360
Toluene	mg/L	Yearly				<0.002
Total chromium	mg/L	Yearly				<0.01
Total dissolved solids	mg/L	Quarterly	11300	11900	11600	12200
Total organic carbon	mg/L	Yearly				<1
Total petroleum hydrocarbons C6-C9	mg/L	Yearly				NT
C10-C14	mg/L	Yearly				NT
C15-C28	mg/L	Yearly				NT
C29-C36	mg/L	Yearly				NT
C10-C36 (Sum)	mg/L	Yearly				NT
Total Phenolics	mg/L	Yearly				<0.01
Xylene	mg/L	Yearly				<0.002
Zinc	mg/L	Yearly				0.027

