

Disclaimer:  
 1. Dams were assumed full of water at the start of the event.  
 2. Filtering Criteria: Extent has been kept when:  
 - Depth > 0.10 m; OR  
 - Depth > 0.05 m AND (Velocity \* Depth) > 0.025 m<sup>2</sup>/s; OR  
 - Velocity > 2 m/s.  
 Further to these criteria, "puddles" of less than 100 m<sup>2</sup> were removed from the extent.

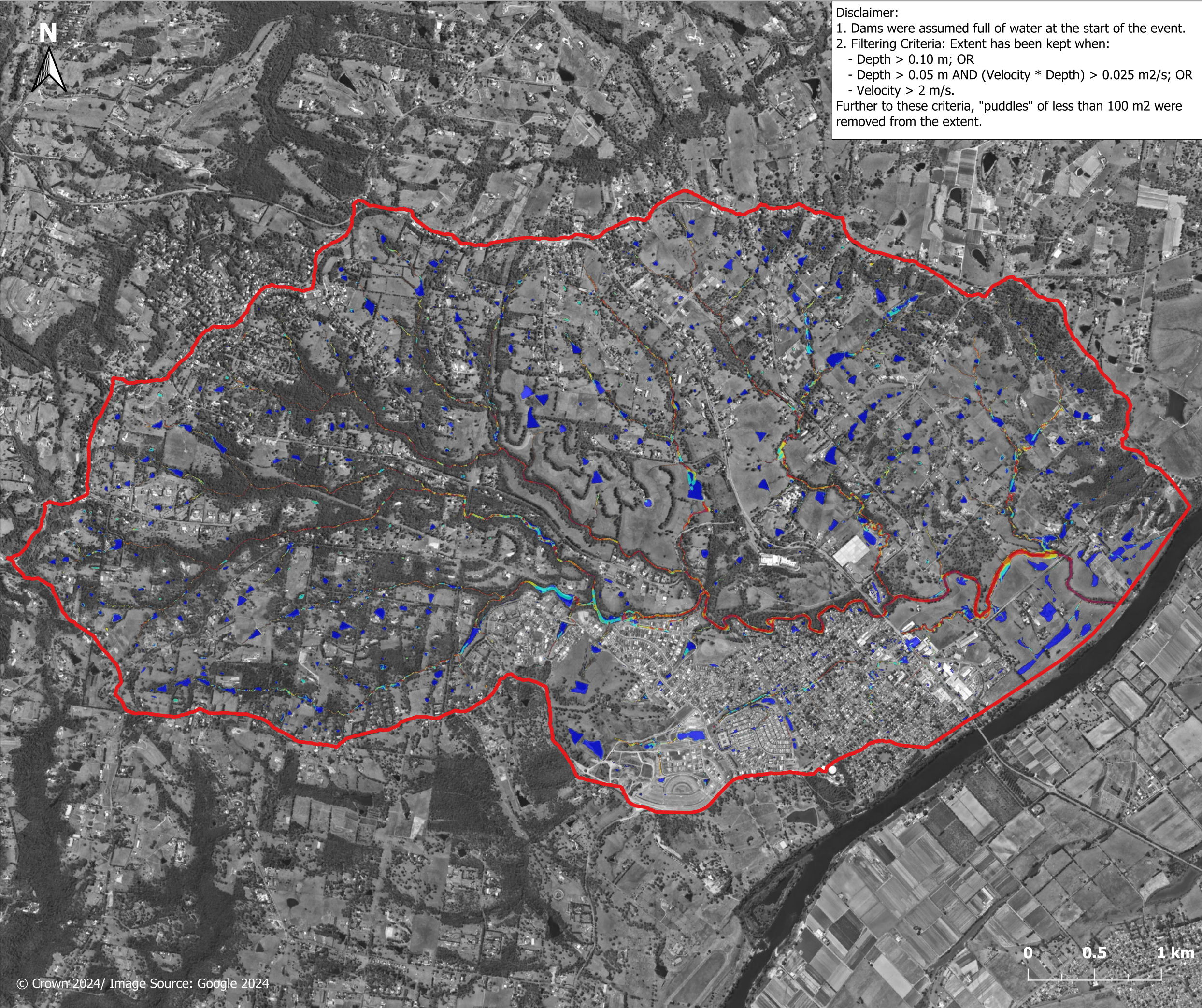
**Figure E.3.1.3**  
**Peak flow velocity**  
**20% AEP event**  
**West of North**  
**Richmond**

- Legend**
- Study area
  - Flow velocity (m/s)**
  - 0.00-0.25
  - 0.25-0.50
  - 0.50-0.75
  - 0.75-1.00
  - 1.00-1.50
  - >1.50



**Report MHL3008**  
**Redbank Creek Flood**  
**Study**

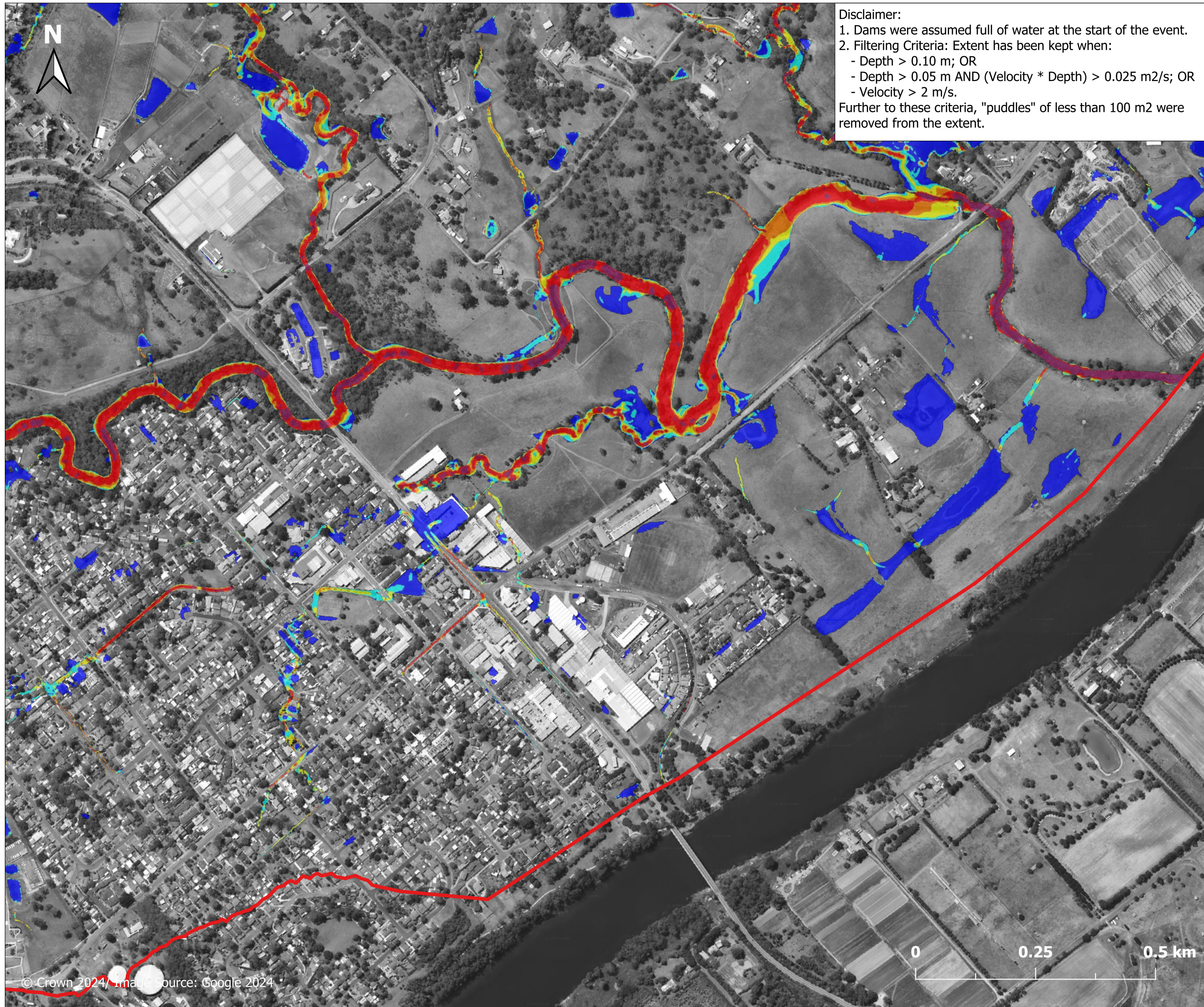




Disclaimer:  
 1. Dams were assumed full of water at the start of the event.  
 2. Filtering Criteria: Extent has been kept when:  
 - Depth > 0.10 m; OR  
 - Depth > 0.05 m AND (Velocity \* Depth) > 0.025 m<sup>2</sup>/s; OR  
 - Velocity > 2 m/s.  
 Further to these criteria, "puddles" of less than 100 m<sup>2</sup> were removed from the extent.

**Figure E.3.2.1**  
**Peak flow velocity**  
**10% AEP event**  
**North Richmond**  
**Overview**

- Legend**
- Study area
  - Flow velocity (m/s)**
  - 0.00-0.25
  - 0.25-0.50
  - 0.50-0.75
  - 0.75-1.00
  - 1.00-1.50
  - >1.50



Disclaimer:  
 1. Dams were assumed full of water at the start of the event.  
 2. Filtering Criteria: Extent has been kept when:  
 - Depth > 0.10 m; OR  
 - Depth > 0.05 m AND (Velocity \* Depth) > 0.025 m<sup>2</sup>/s; OR  
 - Velocity > 2 m/s.  
 Further to these criteria, "puddles" of less than 100 m<sup>2</sup> were removed from the extent.

**Figure E.3.2.2**

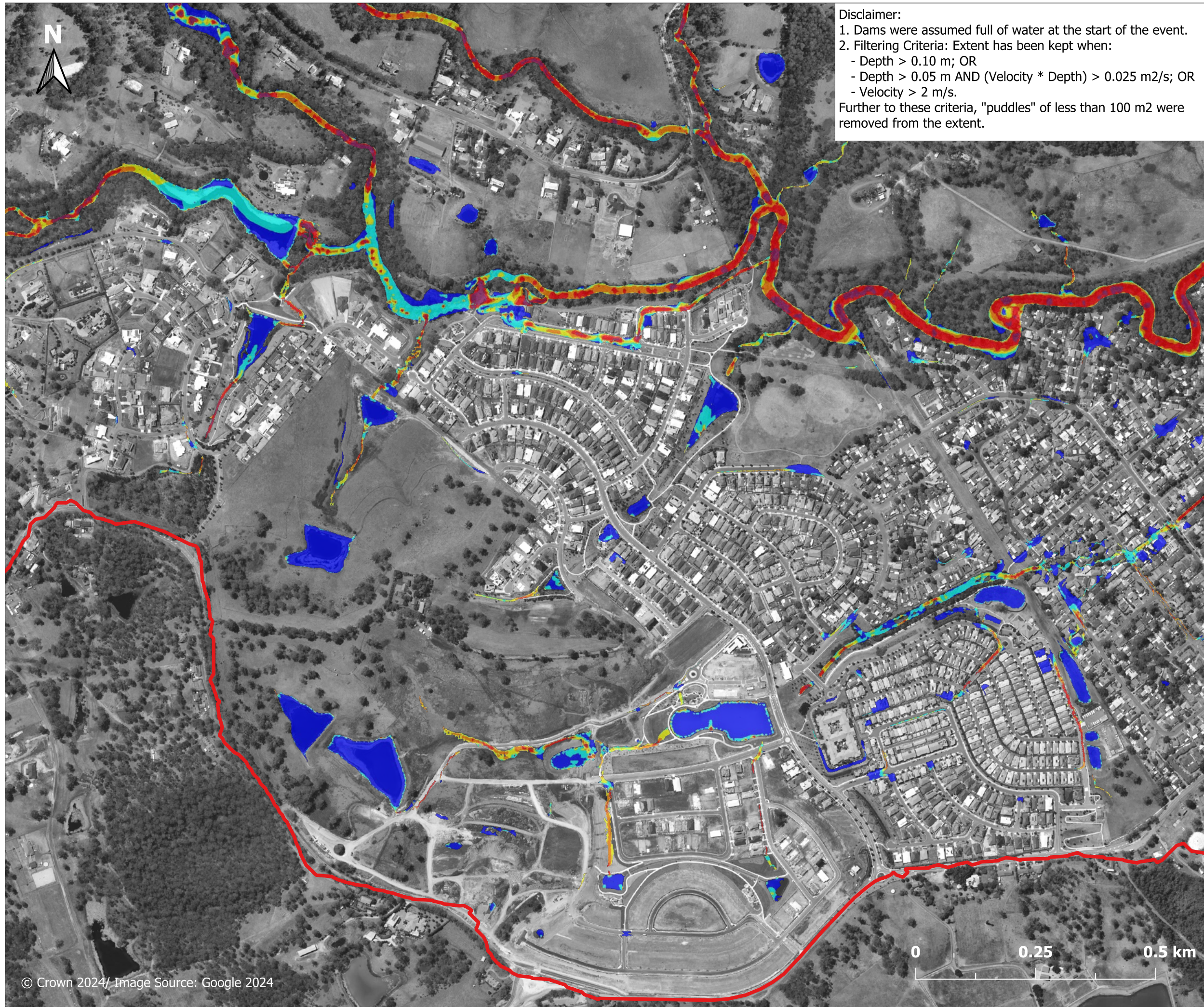
**Peak flow velocity  
 10% AEP event  
 East of North  
 Richmond**

- Legend**
- Study area
  - Flow velocity (m/s)**
  - 0.00-0.25
  - 0.25-0.50
  - 0.50-0.75
  - 0.75-1.00
  - 1.00-1.50
  - >1.50



**Report MHL3008**  
**Redbank Creek Flood  
 Study**





Disclaimer:  
 1. Dams were assumed full of water at the start of the event.  
 2. Filtering Criteria: Extent has been kept when:  
 - Depth > 0.10 m; OR  
 - Depth > 0.05 m AND (Velocity \* Depth) > 0.025 m<sup>2</sup>/s; OR  
 - Velocity > 2 m/s.  
 Further to these criteria, "puddles" of less than 100 m<sup>2</sup> were removed from the extent.

# Figure E.3.2.3

## Peak flow velocity 10% AEP event West of North Richmond

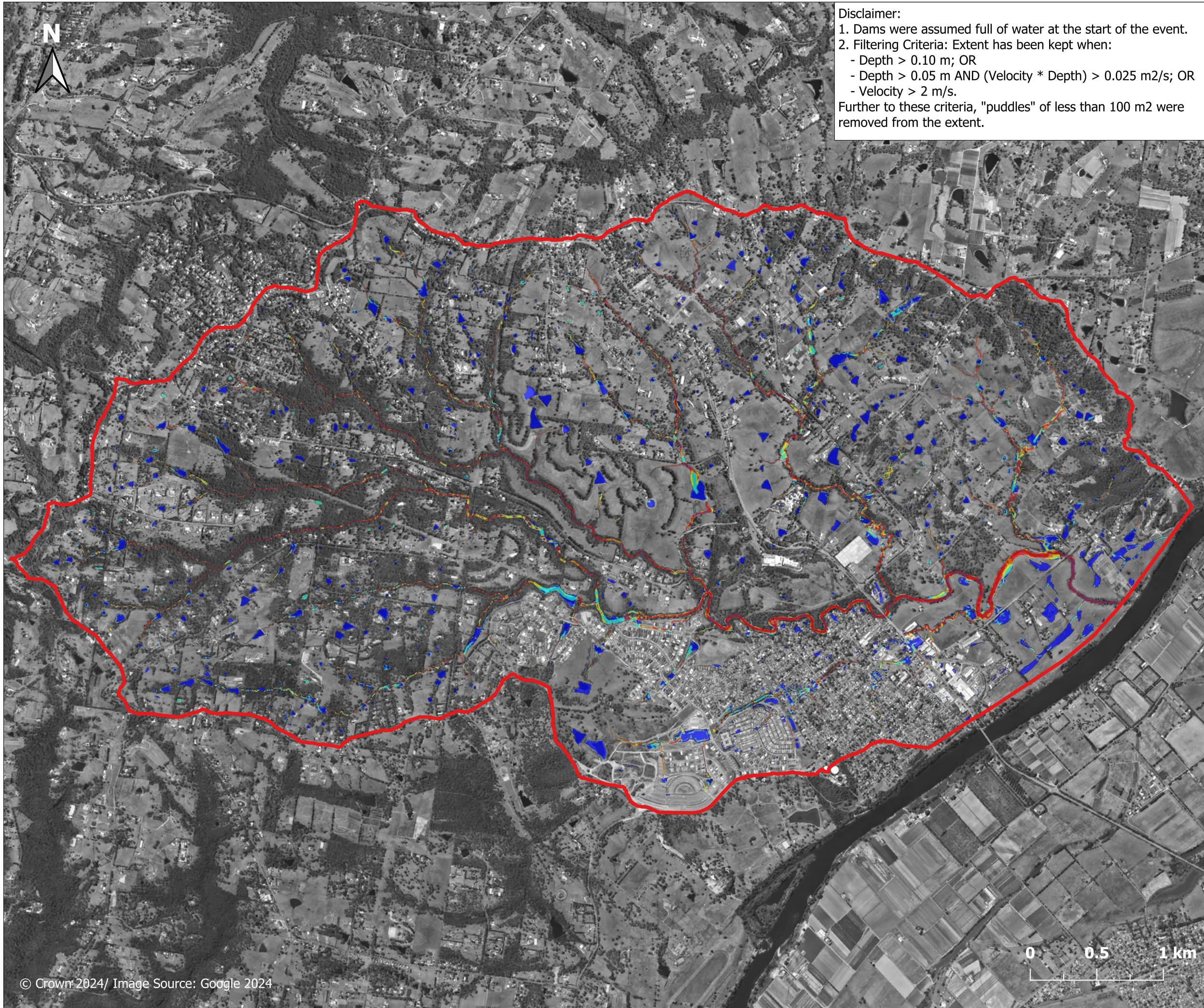
- Legend**
- Study area
  - Flow velocity (m/s)**
  - 0.00-0.25
  - 0.25-0.50
  - 0.50-0.75
  - 0.75-1.00
  - 1.00-1.50
  - >1.50



**Report MHL3008**

**Redbank Creek Flood  
Study**





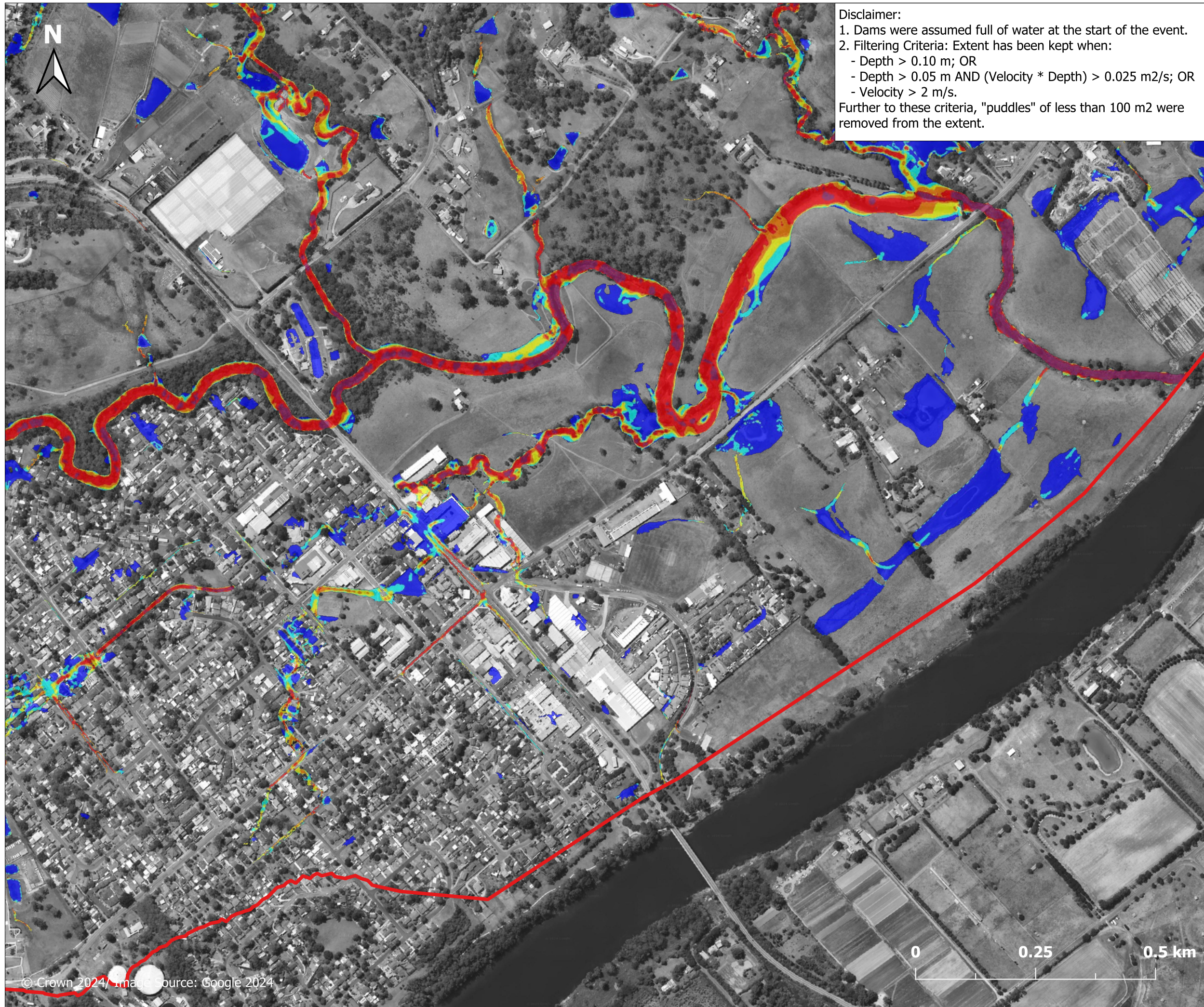
Disclaimer:  
 1. Dams were assumed full of water at the start of the event.  
 2. Filtering Criteria: Extent has been kept when:  
 - Depth > 0.10 m; OR  
 - Depth > 0.05 m AND (Velocity \* Depth) > 0.025 m<sup>2</sup>/s; OR  
 - Velocity > 2 m/s.  
 Further to these criteria, "puddles" of less than 100 m<sup>2</sup> were removed from the extent.

**Figure E.3.3.1**  
**Peak flow velocity**  
**5% AEP event**  
**North Richmond**  
**Overview**

- Legend**
- Study area
  - Flow velocity (m/s)**
  - 0.00-0.25
  - 0.25-0.50
  - 0.50-0.75
  - 0.75-1.00
  - 1.00-1.50
  - >1.50

**Report MHL3008**  
**Redbank Creek Flood**  
**Study**





Disclaimer:  
 1. Dams were assumed full of water at the start of the event.  
 2. Filtering Criteria: Extent has been kept when:  
 - Depth > 0.10 m; OR  
 - Depth > 0.05 m AND (Velocity \* Depth) > 0.025 m<sup>2</sup>/s; OR  
 - Velocity > 2 m/s.  
 Further to these criteria, "puddles" of less than 100 m<sup>2</sup> were removed from the extent.

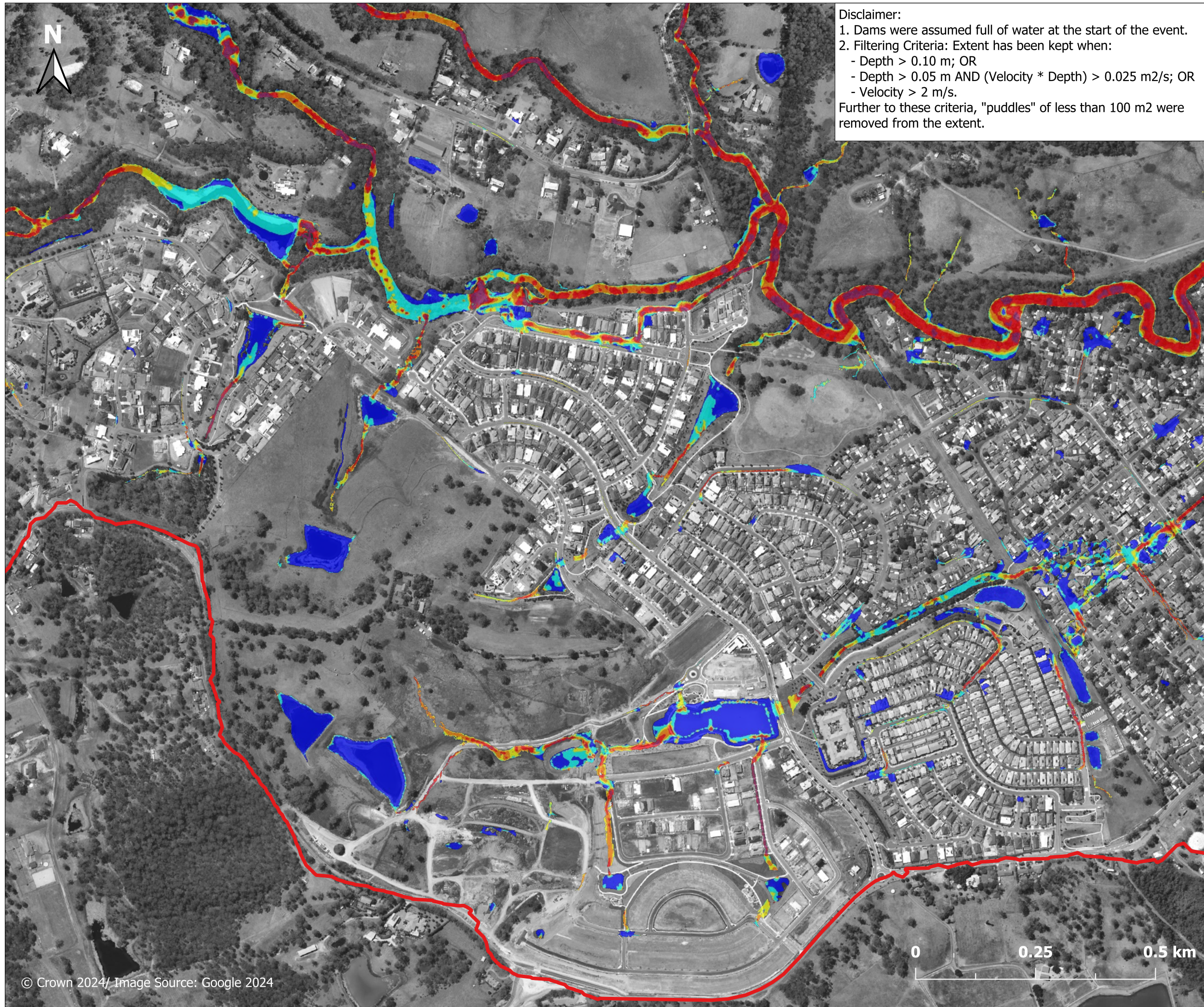
**Figure E.3.3.2**  
**Peak flow velocity**  
**5% AEP event**  
**East of North**  
**Richmond**

- Legend**
- Study area
  - Flow velocity (m/s)**
  - 0.00-0.25
  - 0.25-0.50
  - 0.50-0.75
  - 0.75-1.00
  - 1.00-1.50
  - >1.50



**Report MHL3008**  
**Redbank Creek Flood**  
**Study**





Disclaimer:  
 1. Dams were assumed full of water at the start of the event.  
 2. Filtering Criteria: Extent has been kept when:  
 - Depth > 0.10 m; OR  
 - Depth > 0.05 m AND (Velocity \* Depth) > 0.025 m<sup>2</sup>/s; OR  
 - Velocity > 2 m/s.  
 Further to these criteria, "puddles" of less than 100 m<sup>2</sup> were removed from the extent.

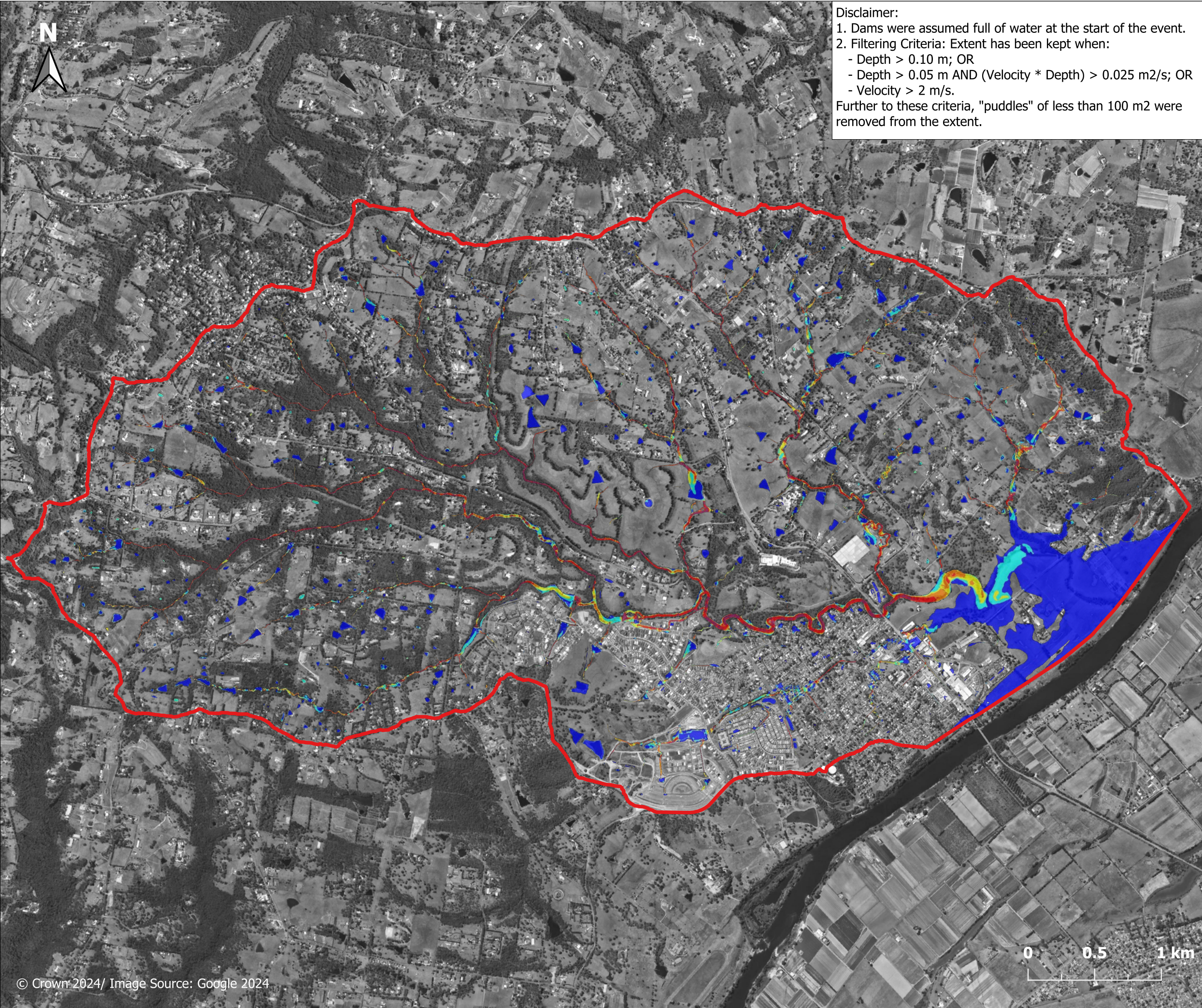
**Figure E.3.3.3**  
**Peak flow velocity**  
**5% AEP event**  
**West of North**  
**Richmond**

- Legend**
- Study area
  - Flow velocity (m/s)**
  - 0.00-0.25
  - 0.25-0.50
  - 0.50-0.75
  - 0.75-1.00
  - 1.00-1.50
  - >1.50



**Report MHL3008**  
**Redbank Creek Flood**  
**Study**



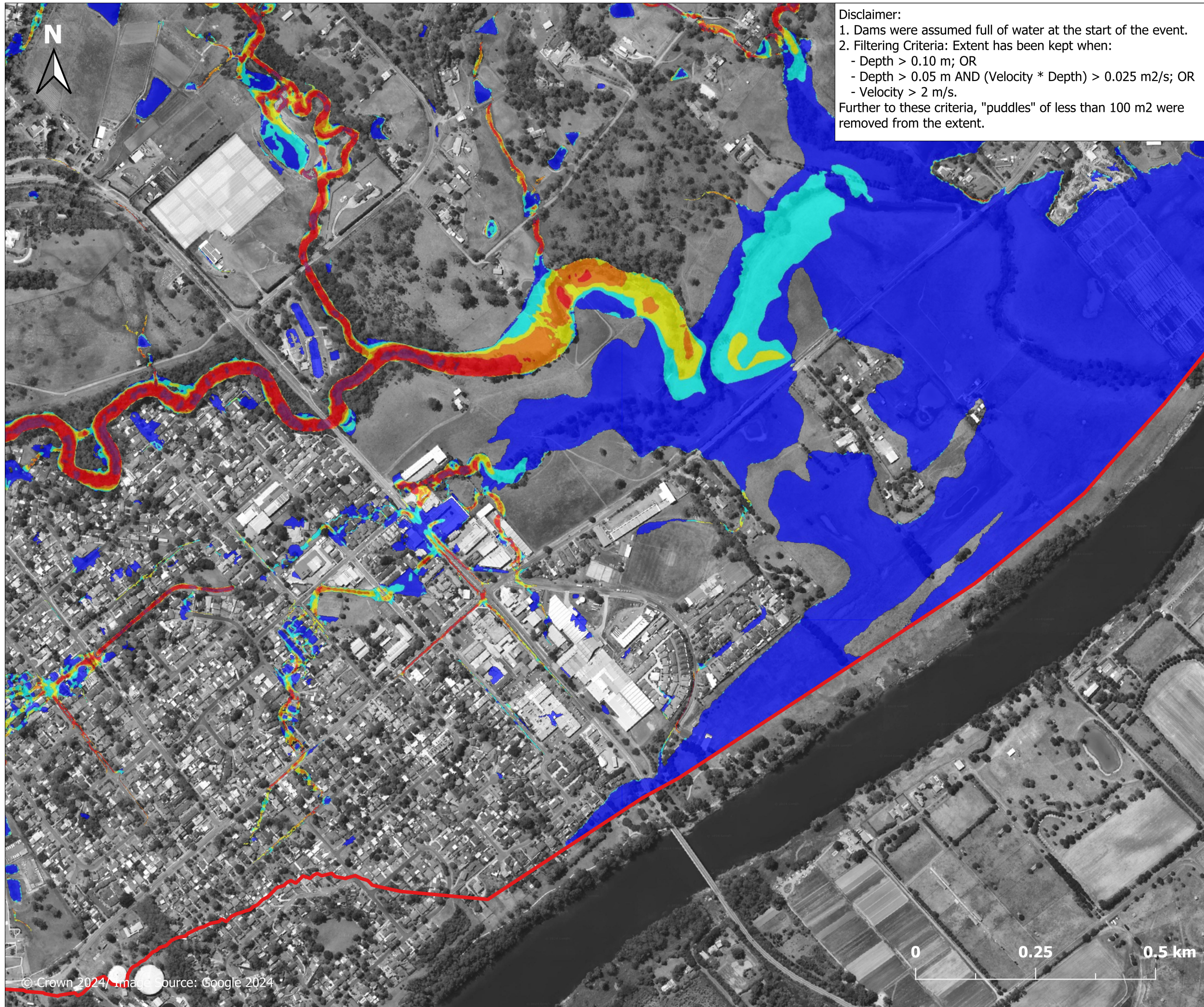


Disclaimer:  
 1. Dams were assumed full of water at the start of the event.  
 2. Filtering Criteria: Extent has been kept when:  
 - Depth > 0.10 m; OR  
 - Depth > 0.05 m AND (Velocity \* Depth) > 0.025 m<sup>2</sup>/s; OR  
 - Velocity > 2 m/s.  
 Further to these criteria, "puddles" of less than 100 m<sup>2</sup> were removed from the extent.

**Figure E.3.4.1**  
**Peak flow velocity**  
**2% AEP event**  
**North Richmond**  
**Overview**

- Legend**
- Study area
  - Flow velocity (m/s)**
  - 0.00-0.25
  - 0.25-0.50
  - 0.50-0.75
  - 0.75-1.00
  - 1.00-1.50
  - >1.50





Disclaimer:  
 1. Dams were assumed full of water at the start of the event.  
 2. Filtering Criteria: Extent has been kept when:  
 - Depth > 0.10 m; OR  
 - Depth > 0.05 m AND (Velocity \* Depth) > 0.025 m<sup>2</sup>/s; OR  
 - Velocity > 2 m/s.  
 Further to these criteria, "puddles" of less than 100 m<sup>2</sup> were removed from the extent.

**Figure E.3.4.2**

**Peak flow velocity  
 2% AEP event  
 East of North  
 Richmond**

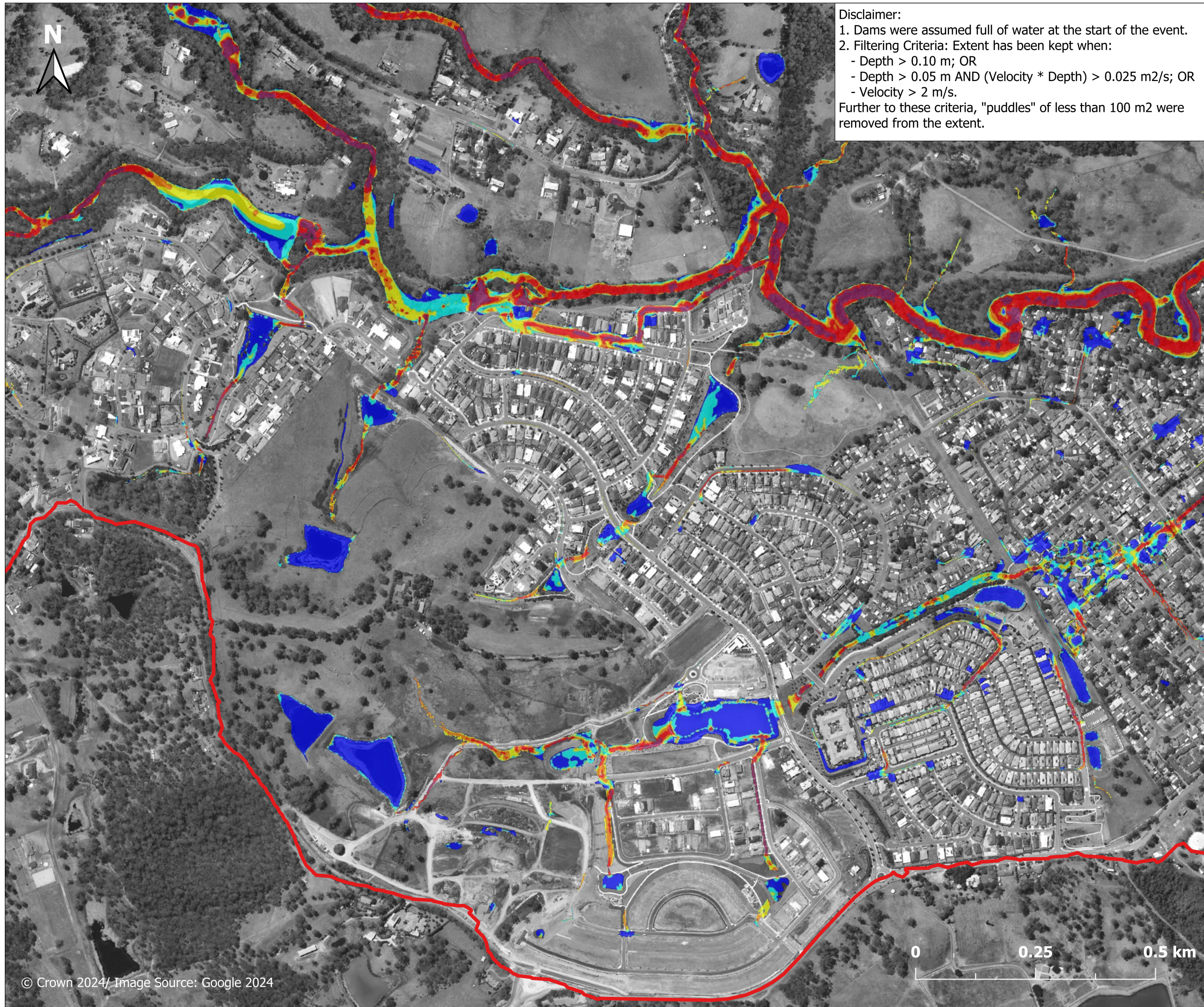
- Legend**
- Study area
  - Flow velocity (m/s)**
  - 0.00-0.25
  - 0.25-0.50
  - 0.50-0.75
  - 0.75-1.00
  - 1.00-1.50
  - >1.50



**Report MHL3008**

**Redbank Creek Flood  
 Study**





Disclaimer:  
 1. Dams were assumed full of water at the start of the event.  
 2. Filtering Criteria: Extent has been kept when:  
 - Depth > 0.10 m; OR  
 - Depth > 0.05 m AND (Velocity \* Depth) > 0.025 m<sup>2</sup>/s; OR  
 - Velocity > 2 m/s.  
 Further to these criteria, "puddles" of less than 100 m<sup>2</sup> were removed from the extent.

**Figure E.3.4.3**

**Peak flow velocity  
 2% AEP event  
 West of North  
 Richmond**

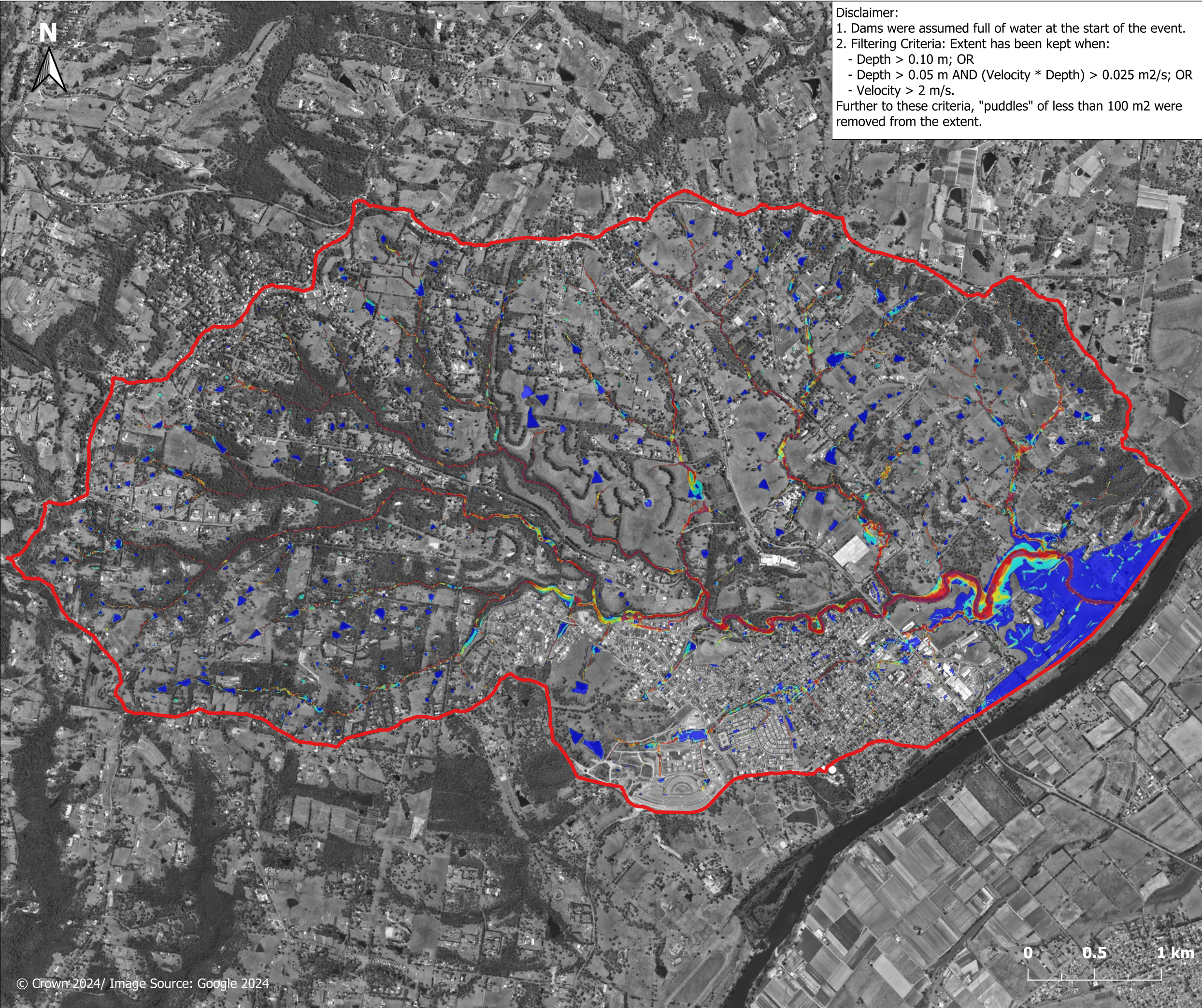
- Legend**
- Study area
  - Flow velocity (m/s)**
  - 0.00-0.25
  - 0.25-0.50
  - 0.50-0.75
  - 0.75-1.00
  - 1.00-1.50
  - >1.50



**Report MHL3008**

**Redbank Creek Flood  
 Study**





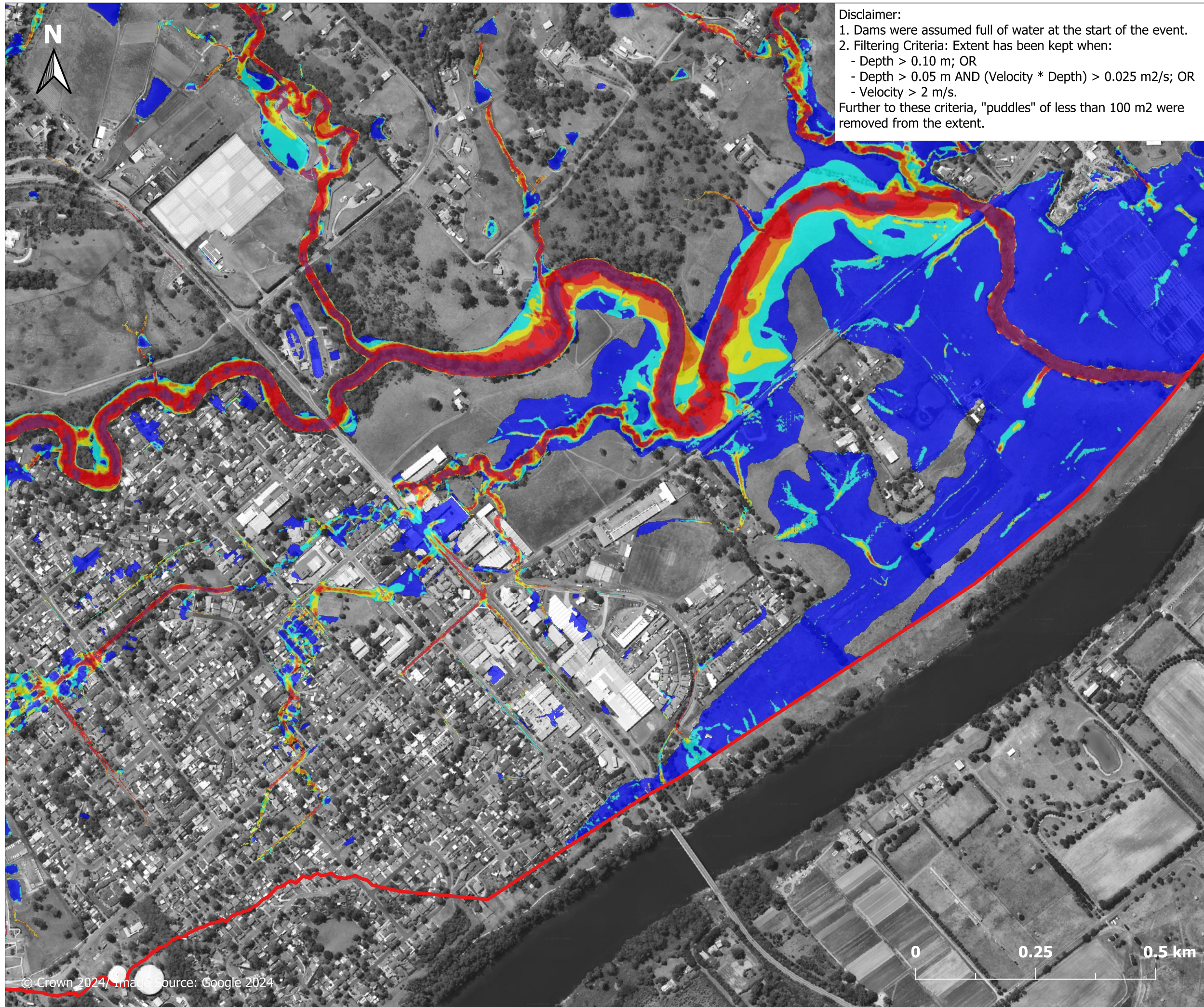
Disclaimer:  
 1. Dams were assumed full of water at the start of the event.  
 2. Filtering Criteria: Extent has been kept when:  
 - Depth > 0.10 m; OR  
 - Depth > 0.05 m AND (Velocity \* Depth) > 0.025 m<sup>2</sup>/s; OR  
 - Velocity > 2 m/s.  
 Further to these criteria, "puddles" of less than 100 m<sup>2</sup> were removed from the extent.

**Figure E.3.5.1**  
**Peak flow velocity**  
**1% AEP event**  
**North Richmond**  
**Overview**

- Legend**
- Study area
  - Flow velocity (m/s)**
  - 0.00-0.25
  - 0.25-0.50
  - 0.50-0.75
  - 0.75-1.00
  - 1.00-1.50
  - >1.50

**Report MHL3008**  
**Redbank Creek Flood**  
**Study**





Disclaimer:  
 1. Dams were assumed full of water at the start of the event.  
 2. Filtering Criteria: Extent has been kept when:  
 - Depth > 0.10 m; OR  
 - Depth > 0.05 m AND (Velocity \* Depth) > 0.025 m<sup>2</sup>/s; OR  
 - Velocity > 2 m/s.  
 Further to these criteria, "puddles" of less than 100 m<sup>2</sup> were removed from the extent.

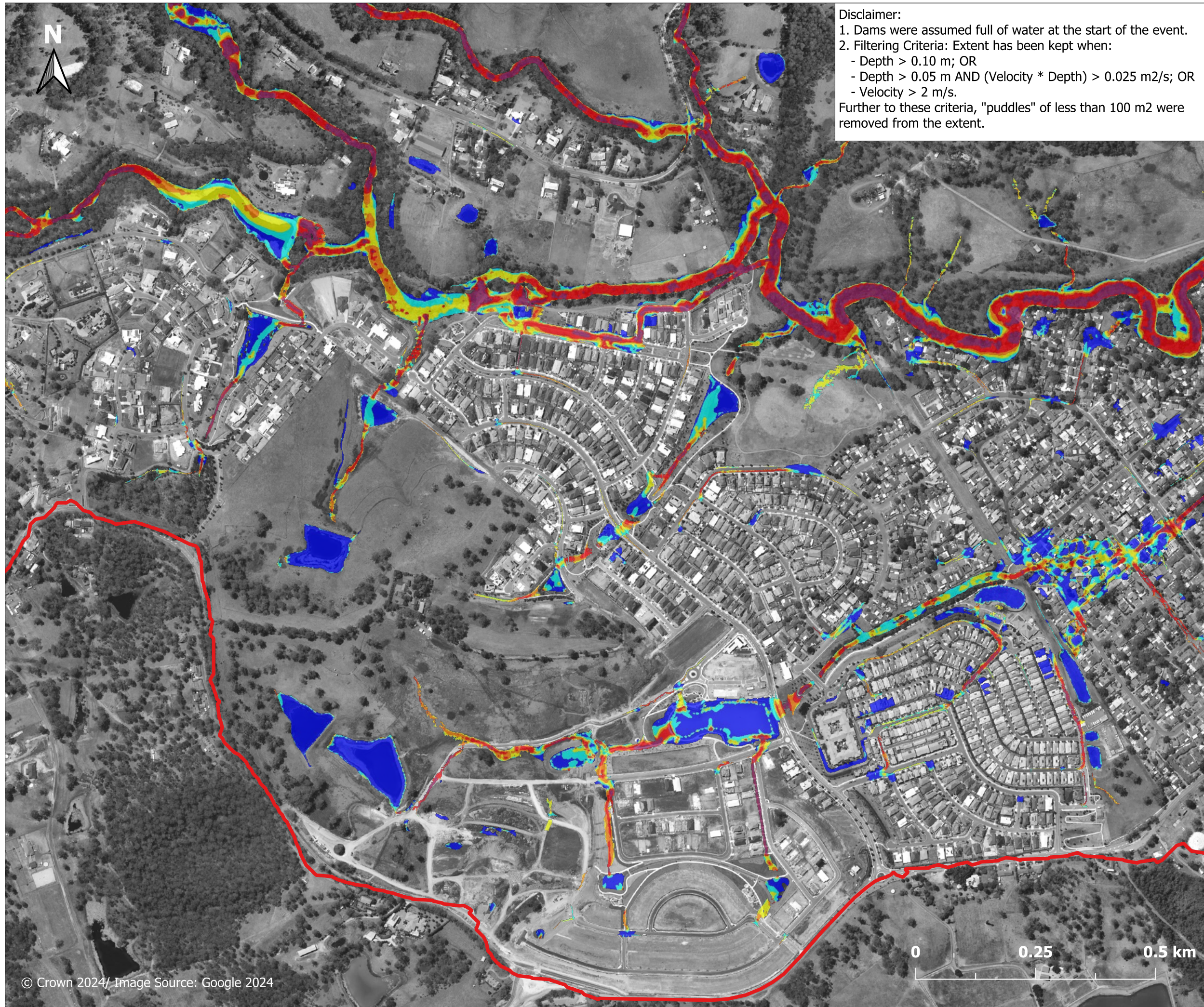
**Figure E.3.5.2**  
**Peak flow velocity**  
**1% AEP event**  
**East of North**  
**Richmond**

- Legend**
- Study area
  - Flow velocity (m/s)**
  - 0.00-0.25
  - 0.25-0.50
  - 0.50-0.75
  - 0.75-1.00
  - 1.00-1.50
  - >1.50



**Report MHL3008**  
**Redbank Creek Flood**  
**Study**





Disclaimer:  
 1. Dams were assumed full of water at the start of the event.  
 2. Filtering Criteria: Extent has been kept when:  
 - Depth > 0.10 m; OR  
 - Depth > 0.05 m AND (Velocity \* Depth) > 0.025 m<sup>2</sup>/s; OR  
 - Velocity > 2 m/s.  
 Further to these criteria, "puddles" of less than 100 m<sup>2</sup> were removed from the extent.

# Figure E.3.5.3

## Peak flow velocity 1% AEP event West of North Richmond

### Legend

- Study area
- Flow velocity (m/s)**
- 0.00-0.25
- 0.25-0.50
- 0.50-0.75
- 0.75-1.00
- 1.00-1.50
- >1.50

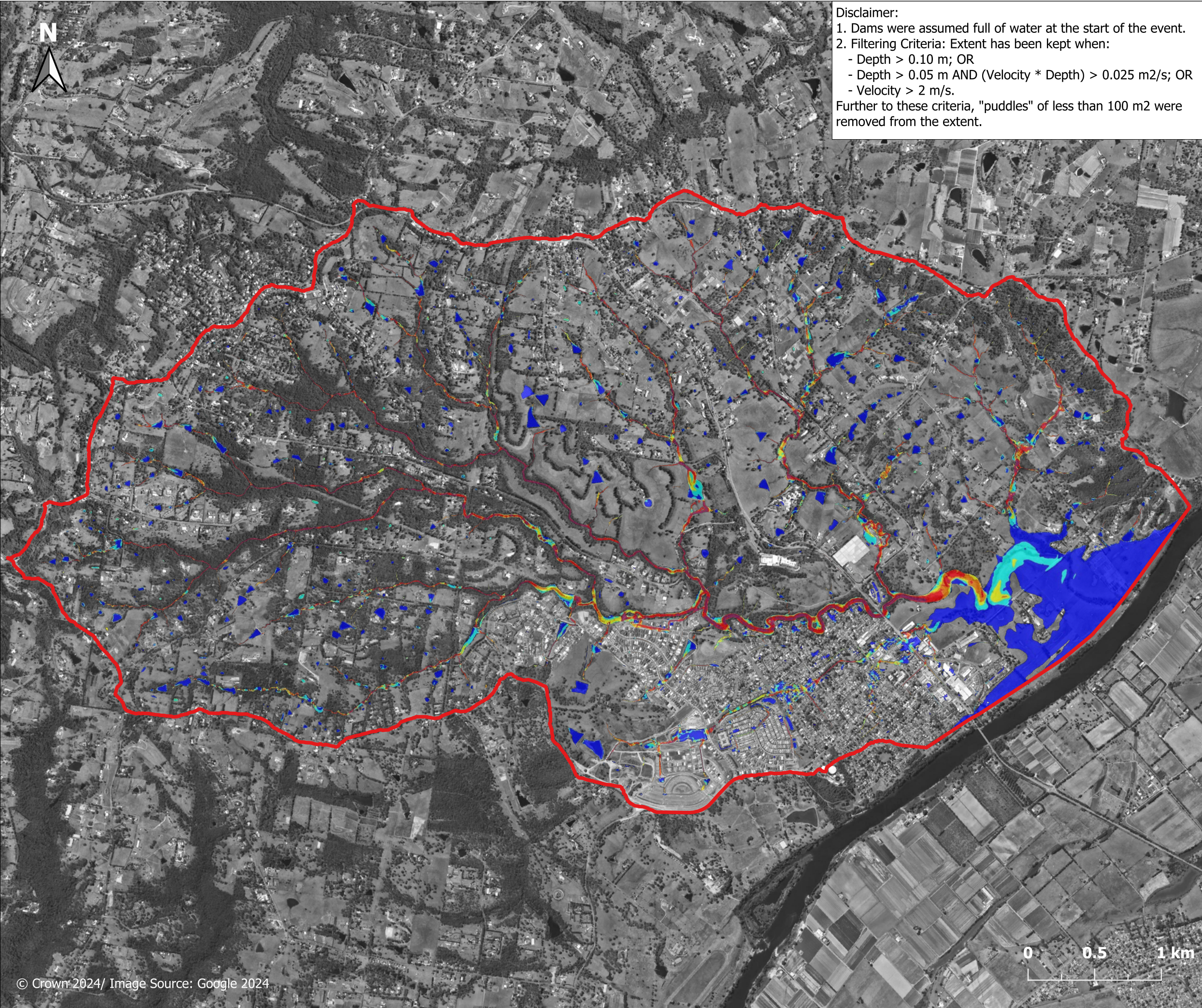


### Report MHL3008

### Redbank Creek Flood Study



**Manly  
Hydraulics  
Laboratory**



**Disclaimer:**

1. Dams were assumed full of water at the start of the event.
  2. Filtering Criteria: Extent has been kept when:
    - Depth > 0.10 m; OR
    - Depth > 0.05 m AND (Velocity \* Depth) > 0.025 m<sup>2</sup>/s; OR
    - Velocity > 2 m/s.
- Further to these criteria, "puddles" of less than 100 m<sup>2</sup> were removed from the extent.

**Figure E.3.6.1**

**Peak flow velocity  
1 in 200 AEP event  
North Richmond  
Overview**

**Legend**

- Study area
- Flow velocity (m/s)**
- 0.00-0.25
- 0.25-0.50
- 0.50-0.75
- 0.75-1.00
- 1.00-1.50
- >1.50

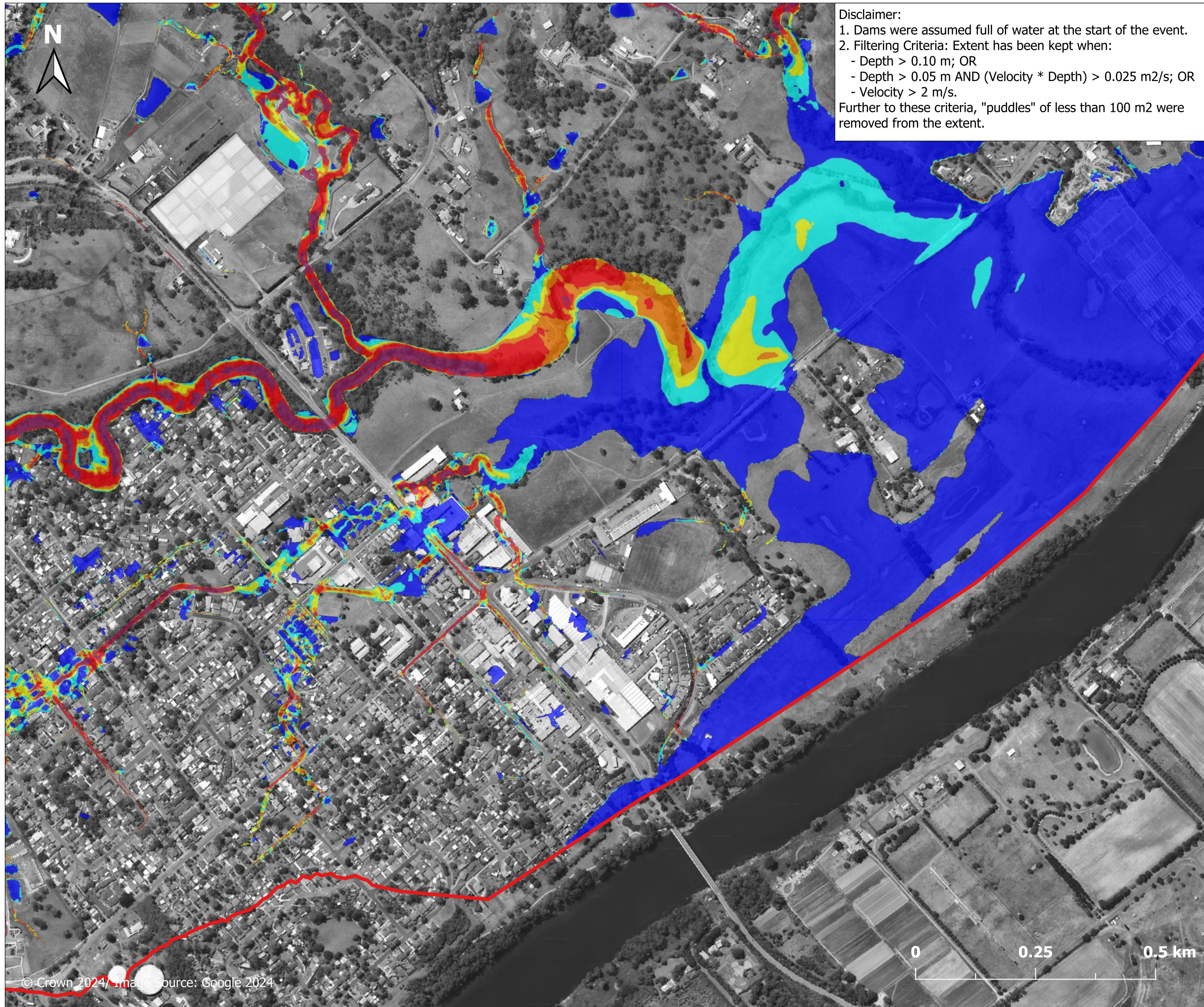
**Report MHL3008**

**Redbank Creek Flood  
Study**



**Manly  
Hydraulics  
Laboratory**





Disclaimer:  
 1. Dams were assumed full of water at the start of the event.  
 2. Filtering Criteria: Extent has been kept when:  
 - Depth > 0.10 m; OR  
 - Depth > 0.05 m AND (Velocity \* Depth) > 0.025 m<sup>2</sup>/s; OR  
 - Velocity > 2 m/s.  
 Further to these criteria, "puddles" of less than 100 m<sup>2</sup> were removed from the extent.

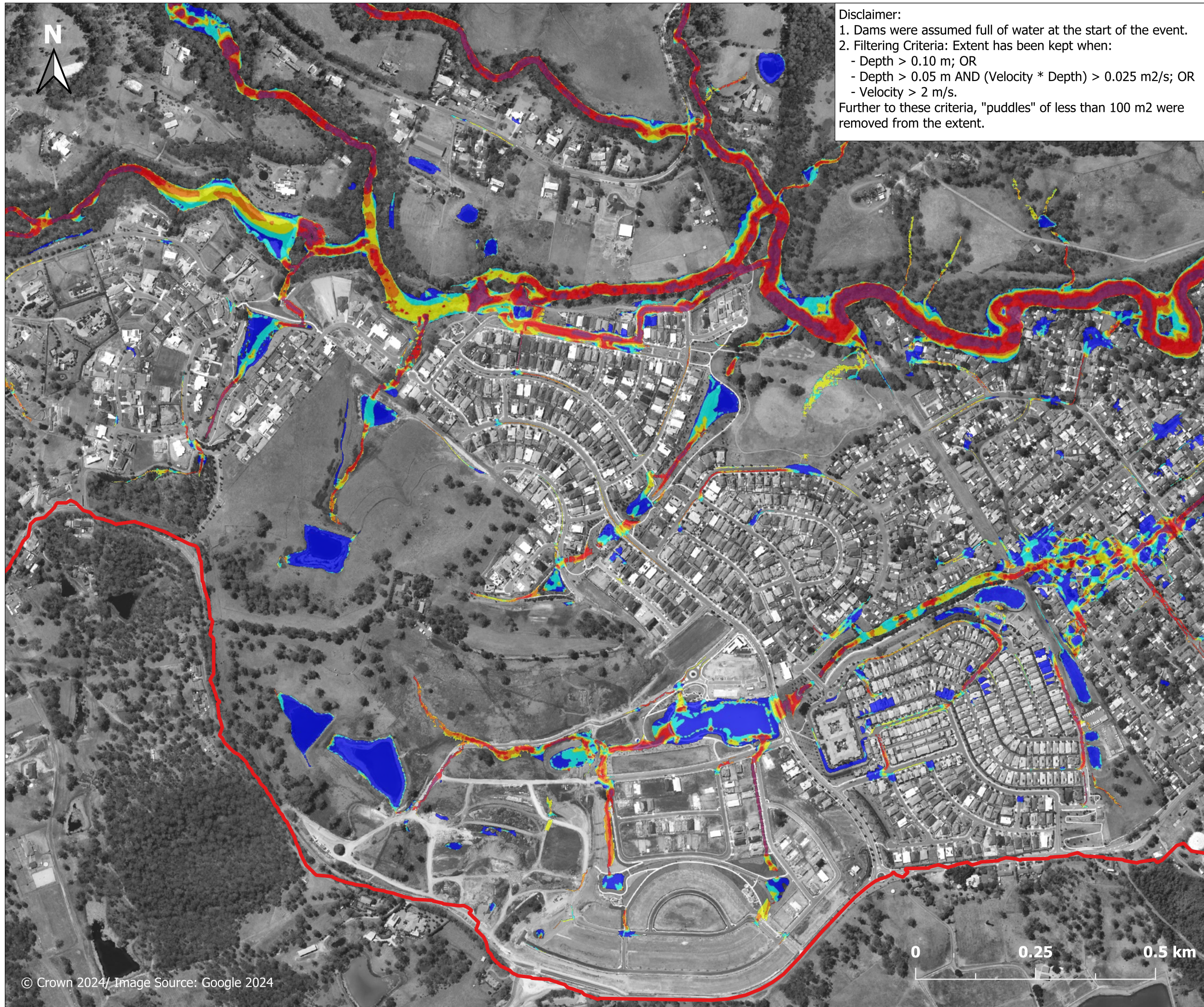
**Figure E.3.6.2**  
**Peak flow velocity**  
**1 in 200 AEP event**  
**East of North**  
**Richmond**

- Legend**
- Study area
  - Flow velocity (m/s)**
  - 0.00-0.25
  - 0.25-0.50
  - 0.50-0.75
  - 0.75-1.00
  - 1.00-1.50
  - >1.50



**Report MHL3008**  
**Redbank Creek Flood**  
**Study**





Disclaimer:  
 1. Dams were assumed full of water at the start of the event.  
 2. Filtering Criteria: Extent has been kept when:  
 - Depth > 0.10 m; OR  
 - Depth > 0.05 m AND (Velocity \* Depth) > 0.025 m<sup>2</sup>/s; OR  
 - Velocity > 2 m/s.  
 Further to these criteria, "puddles" of less than 100 m<sup>2</sup> were removed from the extent.

**Figure E.3.6.3**  
**Peak flow velocity**  
**1 in 200 AEP event**  
**West of North**  
**Richmond**

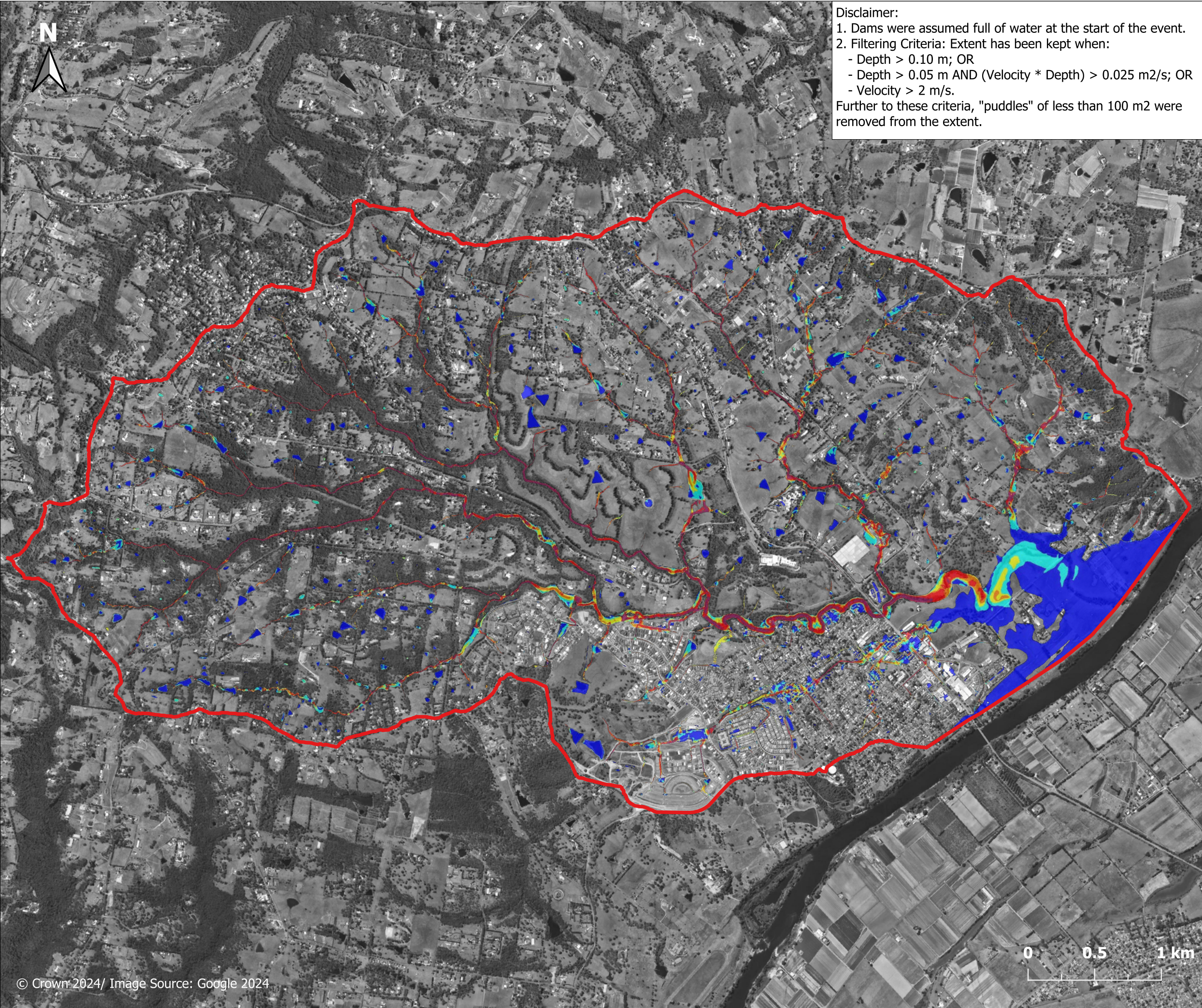
- Legend**
- Study area
  - Flow velocity (m/s)**
  - 0.00-0.25
  - 0.25-0.50
  - 0.50-0.75
  - 0.75-1.00
  - 1.00-1.50
  - >1.50



**Report MHL3008**  
**Redbank Creek Flood**  
**Study**



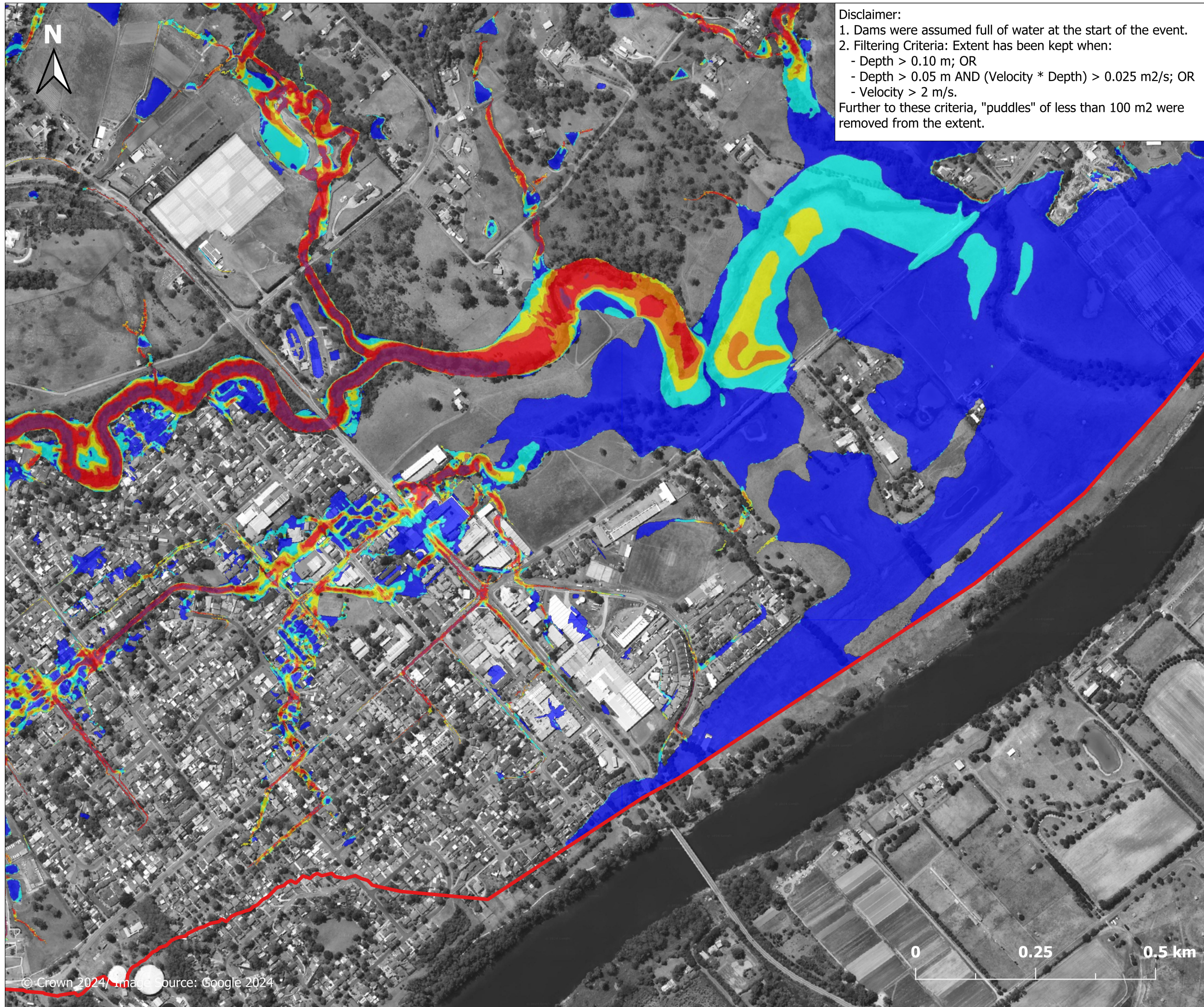




Disclaimer:  
 1. Dams were assumed full of water at the start of the event.  
 2. Filtering Criteria: Extent has been kept when:  
 - Depth > 0.10 m; OR  
 - Depth > 0.05 m AND (Velocity \* Depth) > 0.025 m<sup>2</sup>/s; OR  
 - Velocity > 2 m/s.  
 Further to these criteria, "puddles" of less than 100 m<sup>2</sup> were removed from the extent.

**Figure E.3.7.1**  
**Peak flow velocity**  
**1 in 500 AEP event**  
**North Richmond**  
**Overview**

- Legend**
- Study area
  - Flow velocity (m/s)**
  - 0.00-0.25
  - 0.25-0.50
  - 0.50-0.75
  - 0.75-1.00
  - 1.00-1.50
  - >1.50



Disclaimer:  
 1. Dams were assumed full of water at the start of the event.  
 2. Filtering Criteria: Extent has been kept when:  
 - Depth > 0.10 m; OR  
 - Depth > 0.05 m AND (Velocity \* Depth) > 0.025 m<sup>2</sup>/s; OR  
 - Velocity > 2 m/s.  
 Further to these criteria, "puddles" of less than 100 m<sup>2</sup> were removed from the extent.

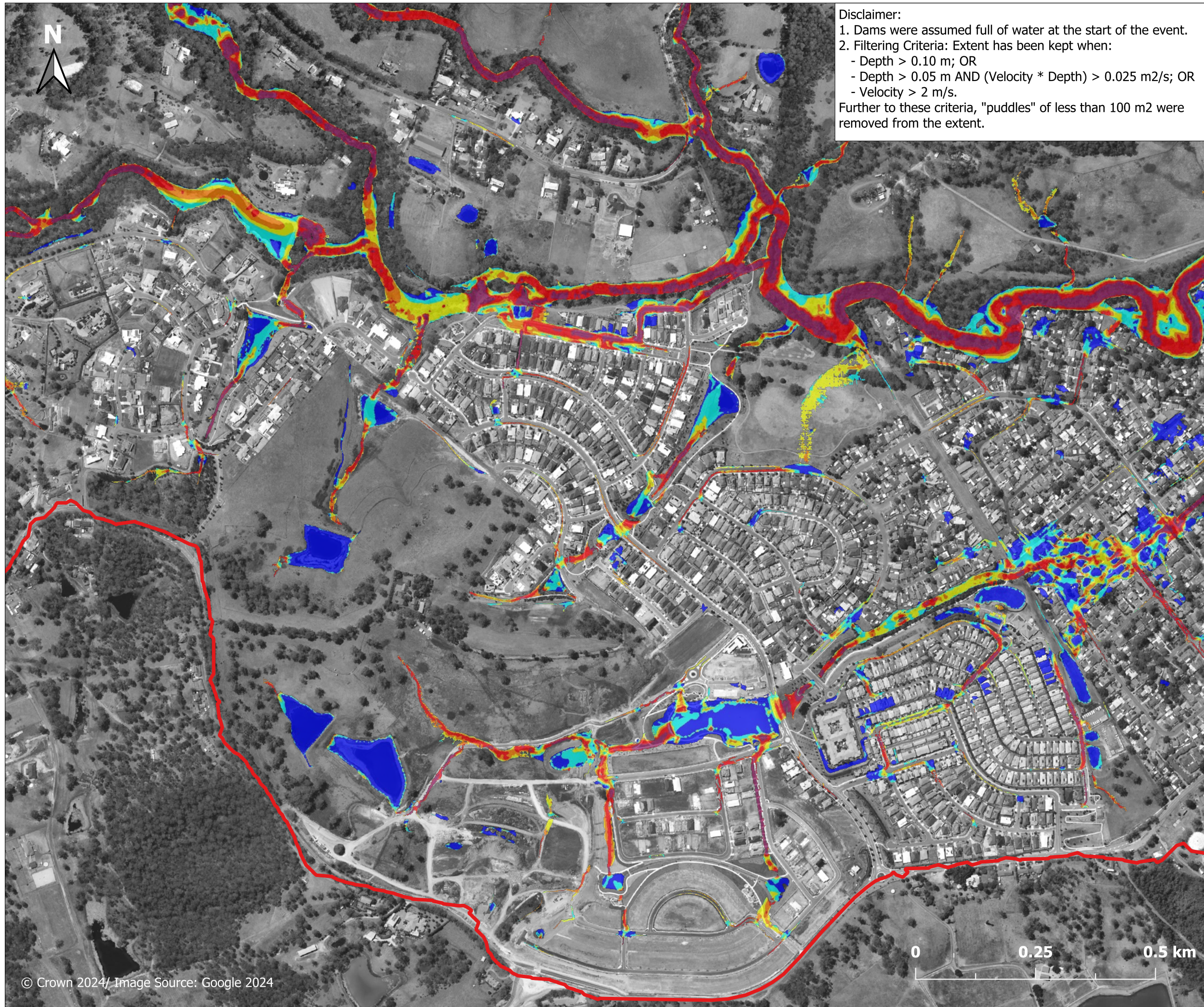
**Figure E.3.7.2**  
**Peak flow velocity**  
**1 in 500 AEP event**  
**East of North**  
**Richmond**

- Legend**
- Study area
  - Flow velocity (m/s)**
  - 0.00-0.25
  - 0.25-0.50
  - 0.50-0.75
  - 0.75-1.00
  - 1.00-1.50
  - >1.50



**Report MHL3008**  
**Redbank Creek Flood**  
**Study**





Disclaimer:  
 1. Dams were assumed full of water at the start of the event.  
 2. Filtering Criteria: Extent has been kept when:  
 - Depth > 0.10 m; OR  
 - Depth > 0.05 m AND (Velocity \* Depth) > 0.025 m<sup>2</sup>/s; OR  
 - Velocity > 2 m/s.  
 Further to these criteria, "puddles" of less than 100 m<sup>2</sup> were removed from the extent.

**Figure E.3.7.3**  
**Peak flow velocity**  
**1 in 500 AEP event**  
**West of North**  
**Richmond**

**Legend**

Study area

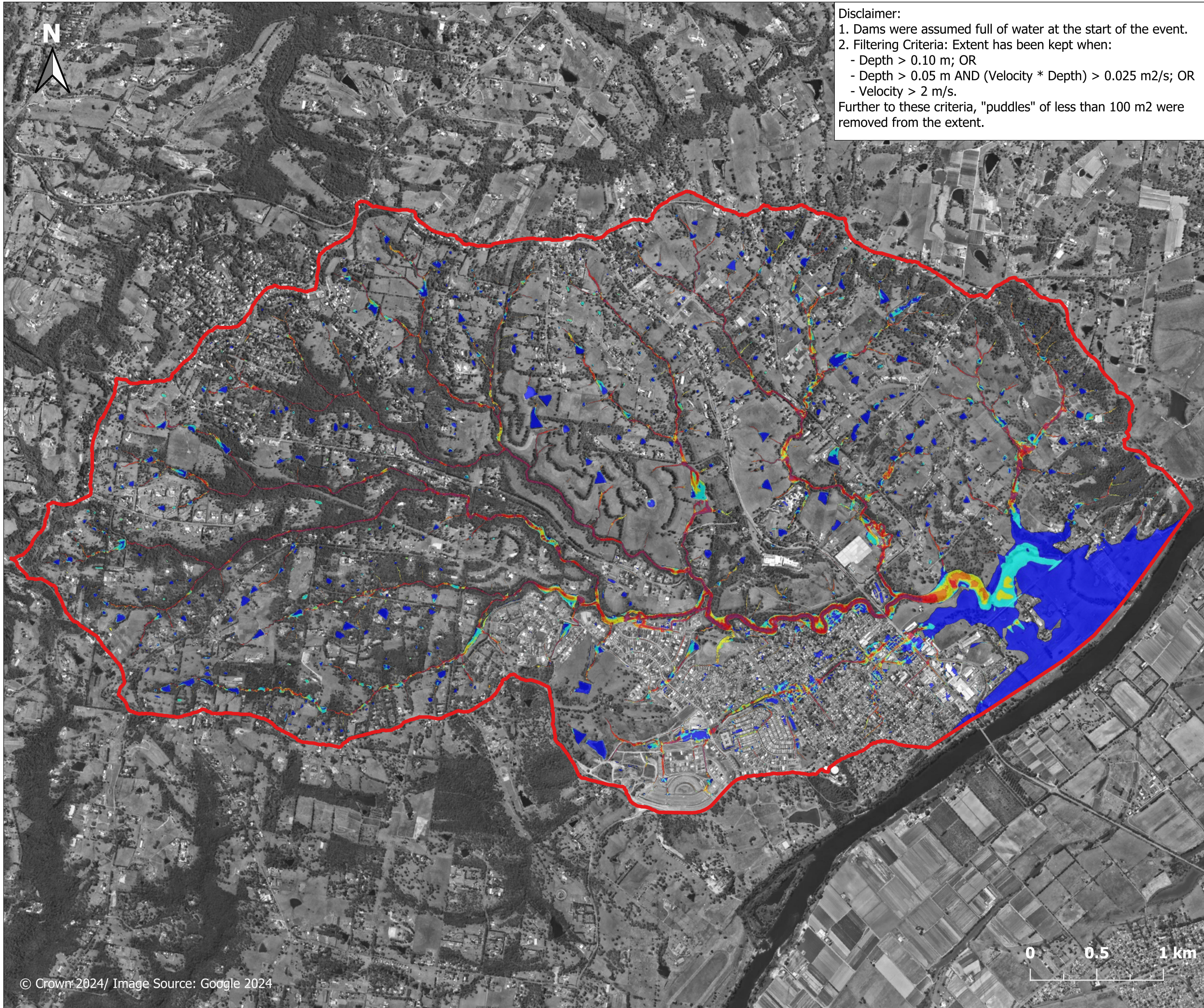
**Flow velocity (m/s)**

- 0.00-0.25
- 0.25-0.50
- 0.50-0.75
- 0.75-1.00
- 1.00-1.50
- >1.50



**Report MHL3008**  
**Redbank Creek Flood**  
**Study**





**Disclaimer:**

1. Dams were assumed full of water at the start of the event.
2. Filtering Criteria: Extent has been kept when:
  - Depth > 0.10 m; OR
  - Depth > 0.05 m AND (Velocity \* Depth) > 0.025 m<sup>2</sup>/s; OR
  - Velocity > 2 m/s.
 Further to these criteria, "puddles" of less than 100 m<sup>2</sup> were removed from the extent.

**Figure E.3.8.1**

**Peak flow velocity  
1 in 1000 AEP event  
North Richmond  
Overview**

**Legend**

- Study area
- Flow velocity (m/s)**
- 0.00-0.25
- 0.25-0.50
- 0.50-0.75
- 0.75-1.00
- 1.00-1.50
- >1.50

**Report MHL3008**

**Redbank Creek Flood  
Study**



**Manly  
Hydraulics  
Laboratory**