

Disclaimer:

1. Dams were assumed full of water at the start of the event.
2. Filtering Criteria: Extent has been kept when:
 - Depth > 0.10 m; OR
 - Depth > 0.05 m AND (Velocity * Depth) > 0.025 m²/s; OR
 - Velocity > 2 m/s.
 Further to these criteria, "puddles" of less than 100 m² were removed from the extent.

Figure E.1.3.1

**Peak flood level
5% AEP event
North Richmond
Overview**

Legend

- Study area
- 1 m contour

Peak water level (m AHD)

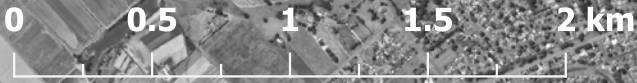
 <= 5	 50 - 55
 5 - 10	 55 - 60
 10 - 15	 60 - 65
 15 - 20	 65 - 70
 20 - 25	 70 - 75
 25 - 30	 75 - 80
 30 - 35	 80 - 85
 35 - 40	 85 - 90
 40 - 45	 90 - 95
 45 - 50	 > 95

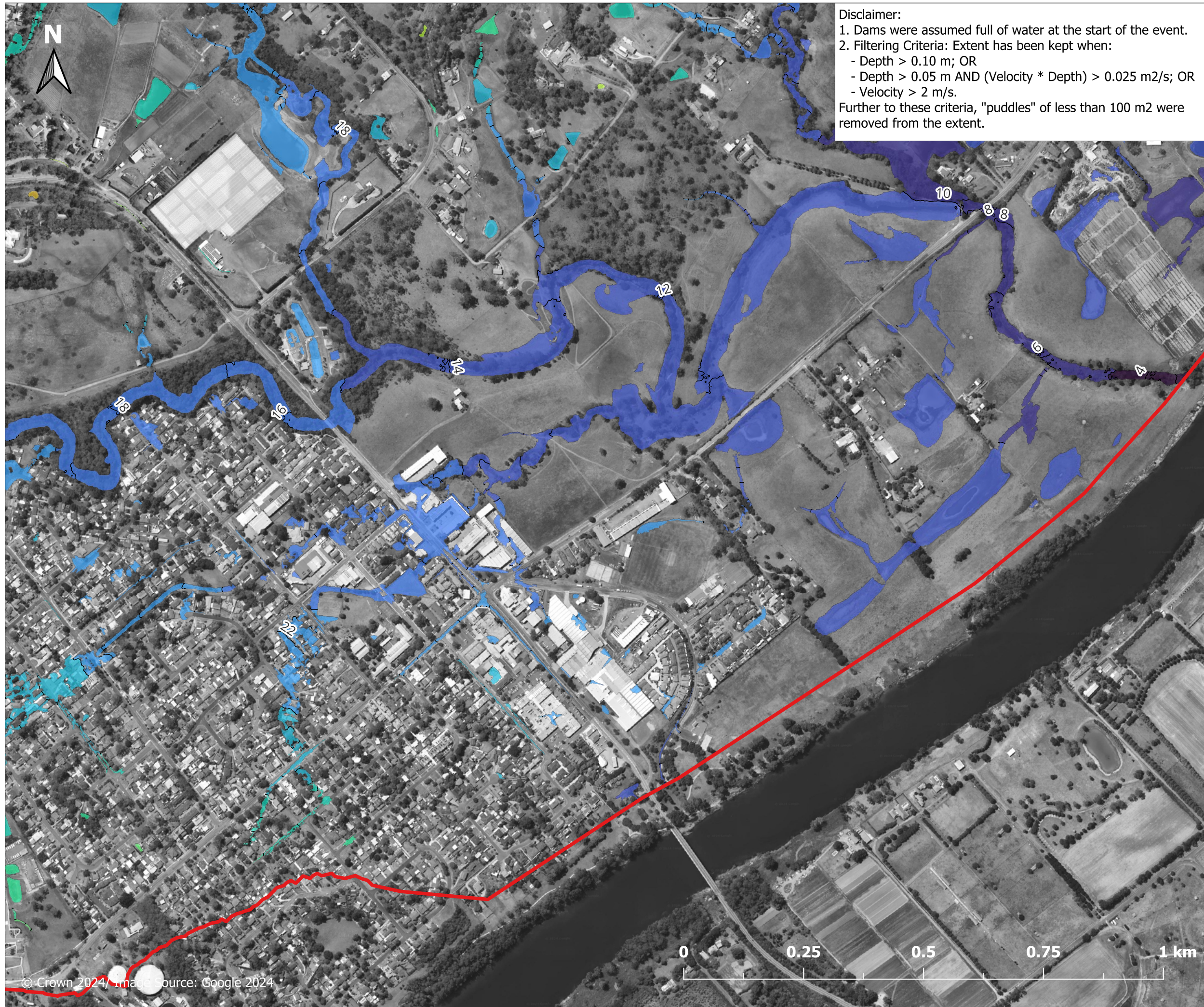
Report MHL3008

**Redbank Creek Flood
Study**



**Manly
Hydraulics
Laboratory**





Disclaimer:
 1. Dams were assumed full of water at the start of the event.
 2. Filtering Criteria: Extent has been kept when:
 - Depth > 0.10 m; OR
 - Depth > 0.05 m AND (Velocity * Depth) > 0.025 m²/s; OR
 - Velocity > 2 m/s.
 Further to these criteria, "puddles" of less than 100 m² were removed from the extent.

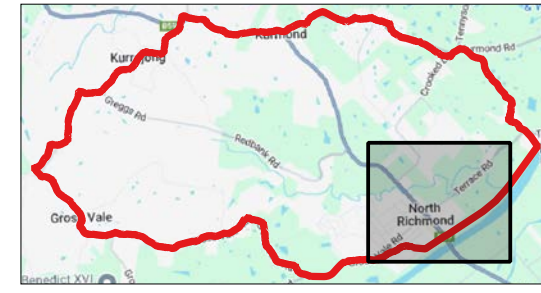
Figure E.1.3.2
Peak flood level
5% AEP event
East of North
Richmond

Legend

- Study area
- 1 m contour

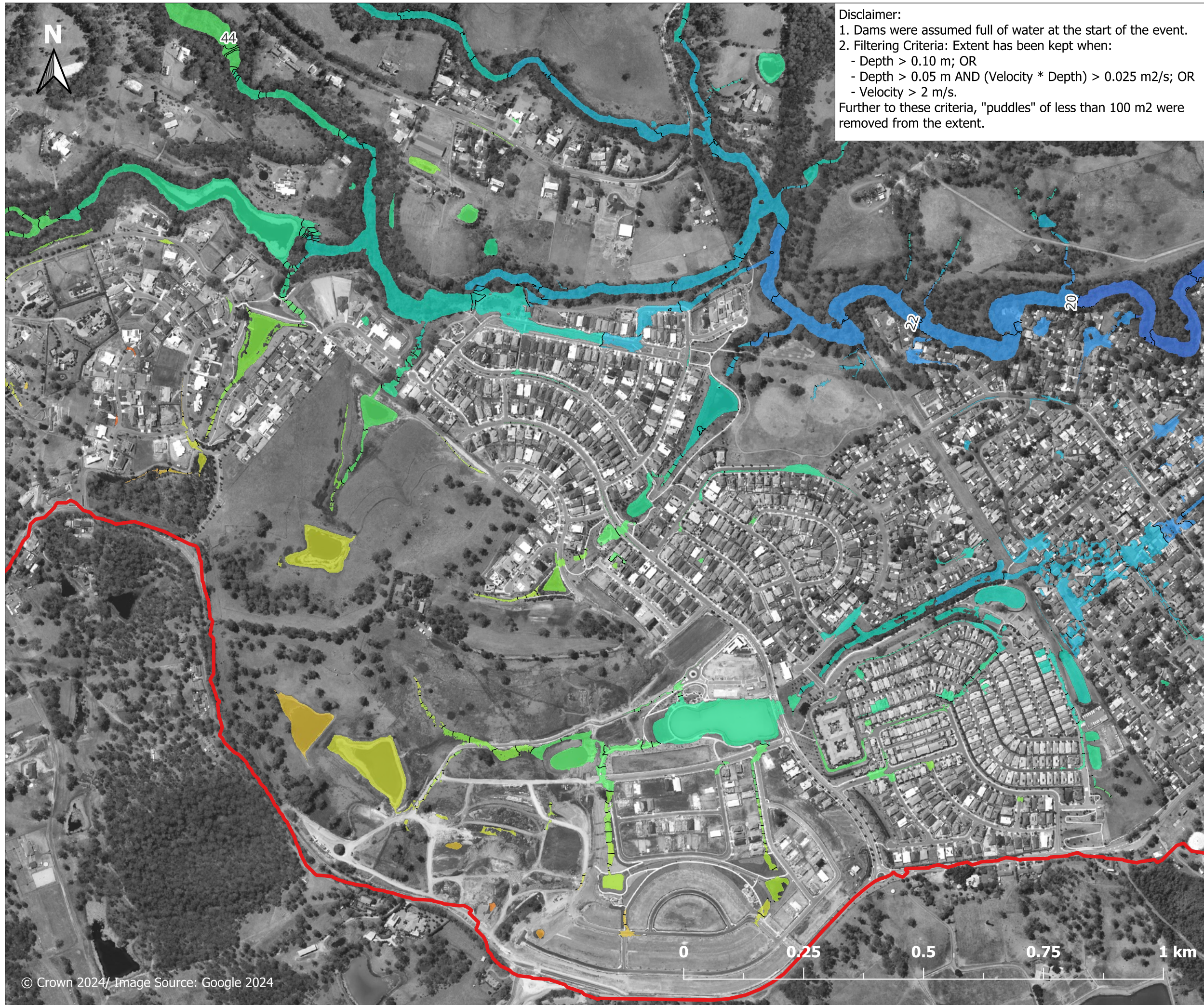
Peak water level (m AHD)

 <= 5	 50 - 55
 5 - 10	 55 - 60
 10 - 15	 60 - 65
 15 - 20	 65 - 70
 20 - 25	 70 - 75
 25 - 30	 75 - 80
 30 - 35	 80 - 85
 35 - 40	 85 - 90
 40 - 45	 90 - 95
 45 - 50	 > 95



Report MHL3008
Redbank Creek Flood
Study





Disclaimer:
 1. Dams were assumed full of water at the start of the event.
 2. Filtering Criteria: Extent has been kept when:
 - Depth > 0.10 m; OR
 - Depth > 0.05 m AND (Velocity * Depth) > 0.025 m²/s; OR
 - Velocity > 2 m/s.
 Further to these criteria, "puddles" of less than 100 m² were removed from the extent.

Figure E.1.3.3

**Peak flood level
 5% AEP event
 West of North
 Richmond**

Legend

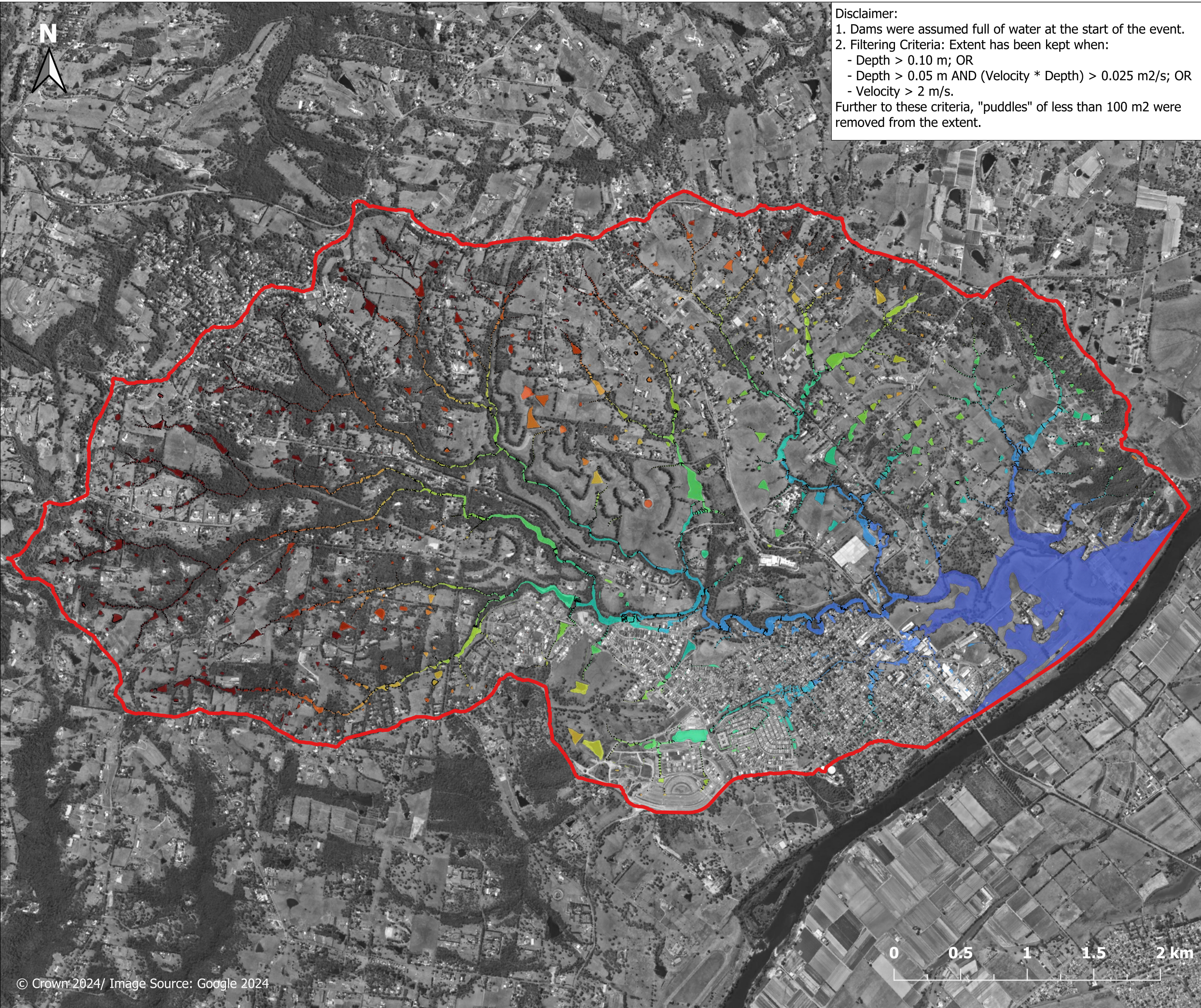
- Study area
 - 1 m contour
- Peak water level (m AHD)**
- | | |
|---|---|
| <= 5 | 50 - 55 |
| 5 - 10 | 55 - 60 |
| 10 - 15 | 60 - 65 |
| 15 - 20 | 65 - 70 |
| 20 - 25 | 70 - 75 |
| 25 - 30 | 75 - 80 |
| 30 - 35 | 80 - 85 |
| 35 - 40 | 85 - 90 |
| 40 - 45 | 90 - 95 |
| 45 - 50 | > 95 |



Report MHL3008

**Redbank Creek Flood
 Study**





Disclaimer:
 1. Dams were assumed full of water at the start of the event.
 2. Filtering Criteria: Extent has been kept when:
 - Depth > 0.10 m; OR
 - Depth > 0.05 m AND (Velocity * Depth) > 0.025 m²/s; OR
 - Velocity > 2 m/s.
 Further to these criteria, "puddles" of less than 100 m² were removed from the extent.

Figure E.1.4.1
Peak flood level
2% AEP event
North Richmond
Overview

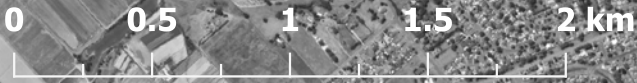
Legend

- Study area
- 1 m contour

Peak water level (m AHD)

 <= 5	 50 - 55
 5 - 10	 55 - 60
 10 - 15	 60 - 65
 15 - 20	 65 - 70
 20 - 25	 70 - 75
 25 - 30	 75 - 80
 30 - 35	 80 - 85
 35 - 40	 85 - 90
 40 - 45	 90 - 95
 45 - 50	 > 95

Report MHL3008
Redbank Creek Flood
Study



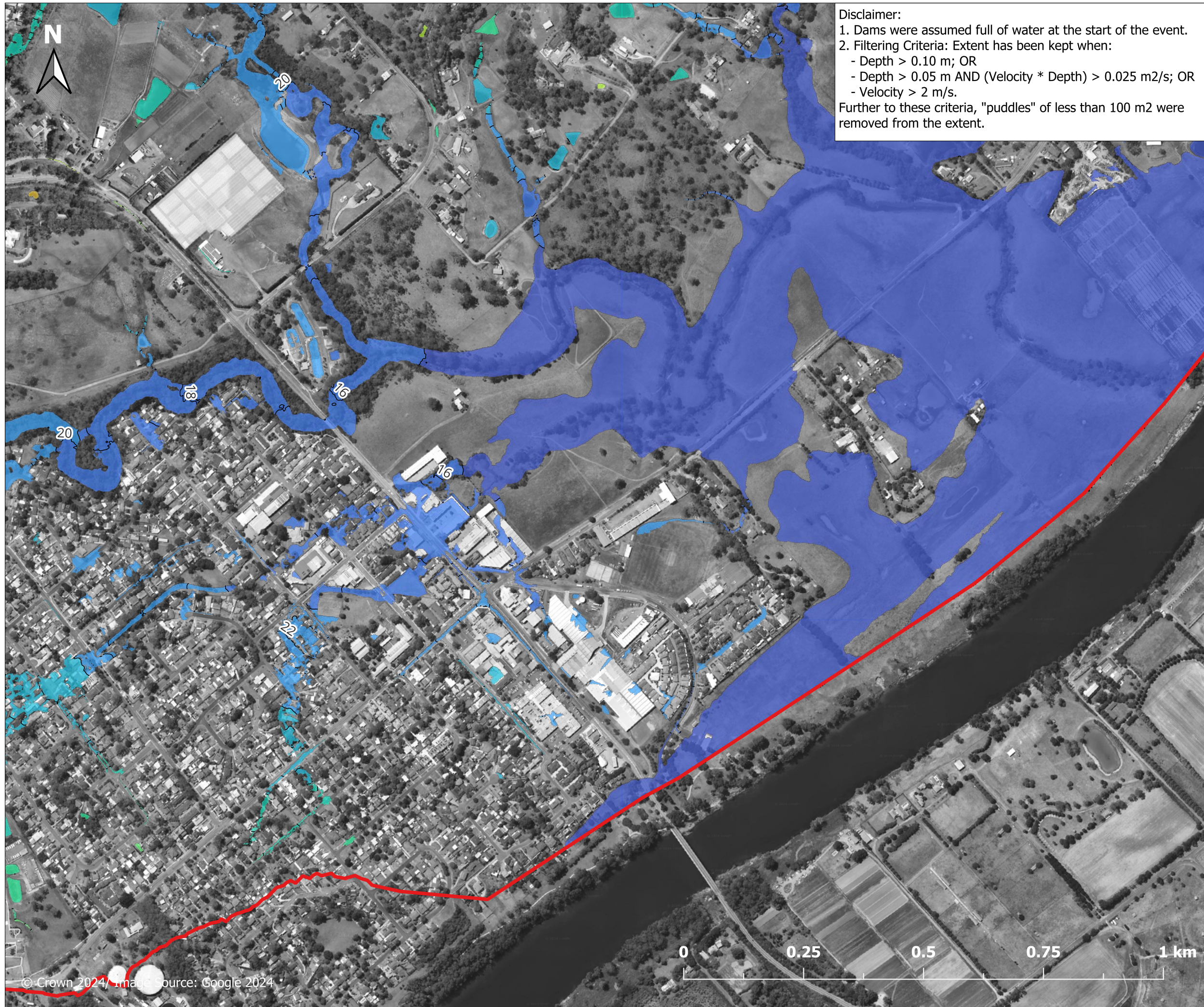
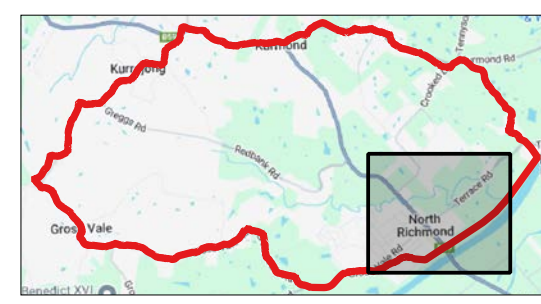


Figure E.1.4.2

**Peak flood level
 2% AEP event
 East of North
 Richmond**

Legend

- Study area
 - 1 m contour
- Peak water level (m AHD)**
- | | |
|---|--|
| <ul style="list-style-type: none"> <= 5 5 - 10 10 - 15 15 - 20 20 - 25 25 - 30 30 - 35 35 - 40 40 - 45 45 - 50 | <ul style="list-style-type: none"> 50 - 55 55 - 60 60 - 65 65 - 70 70 - 75 75 - 80 80 - 85 85 - 90 90 - 95 > 95 |
|---|--|



Report MHL3008

**Redbank Creek Flood
 Study**



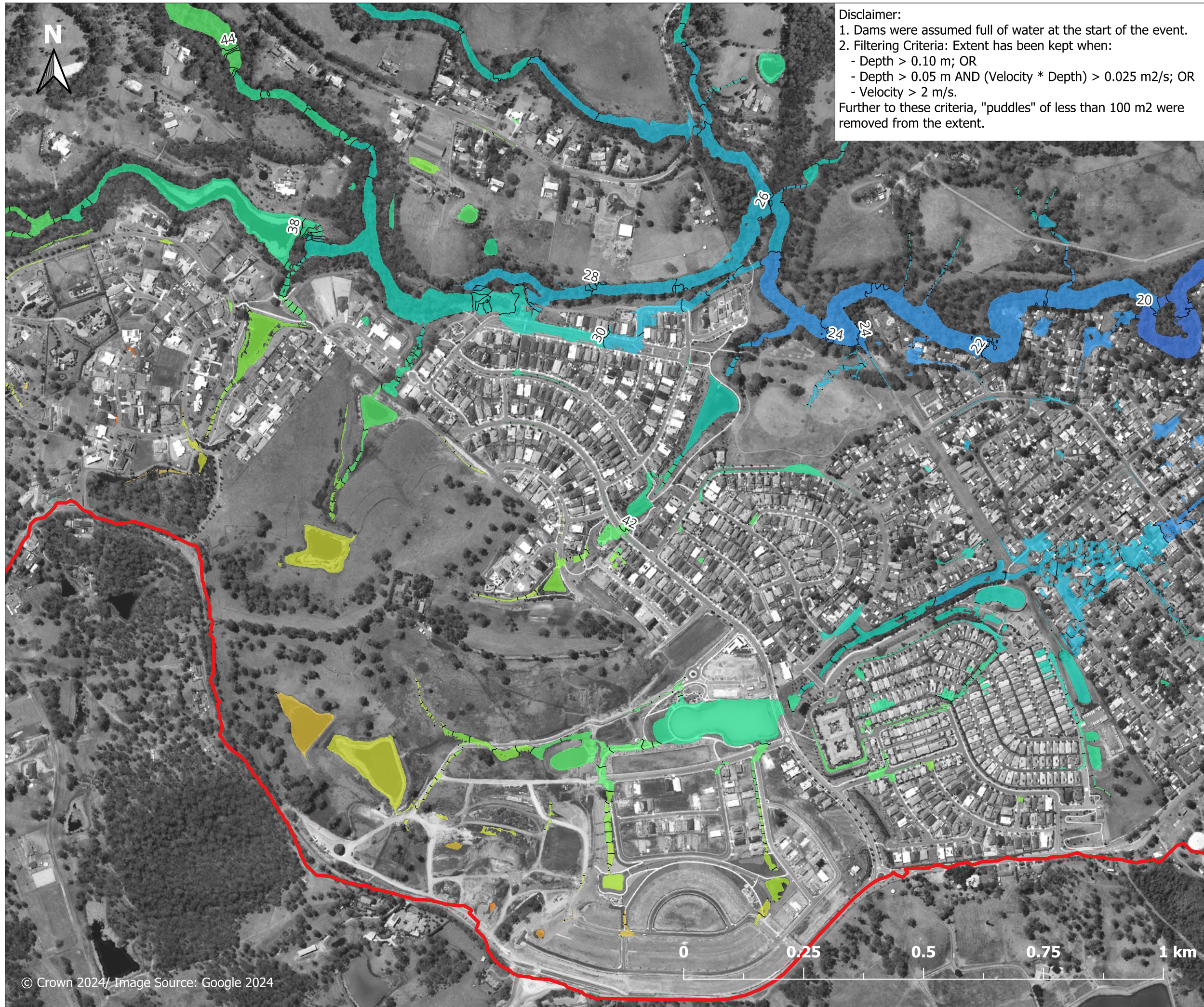
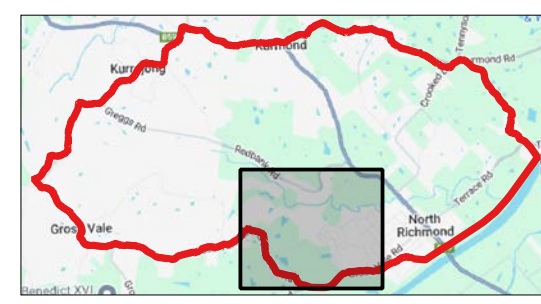


Figure E.1.4.3

**Peak flood level
2% AEP event
West of North
Richmond**

Legend

- Study area
 - 1 m contour
- Peak water level (m AHD)**
- | | |
|---|---|
| <= 5 | 50 - 55 |
| 5 - 10 | 55 - 60 |
| 10 - 15 | 60 - 65 |
| 15 - 20 | 65 - 70 |
| 20 - 25 | 70 - 75 |
| 25 - 30 | 75 - 80 |
| 30 - 35 | 80 - 85 |
| 35 - 40 | 85 - 90 |
| 40 - 45 | 90 - 95 |
| 45 - 50 | > 95 |

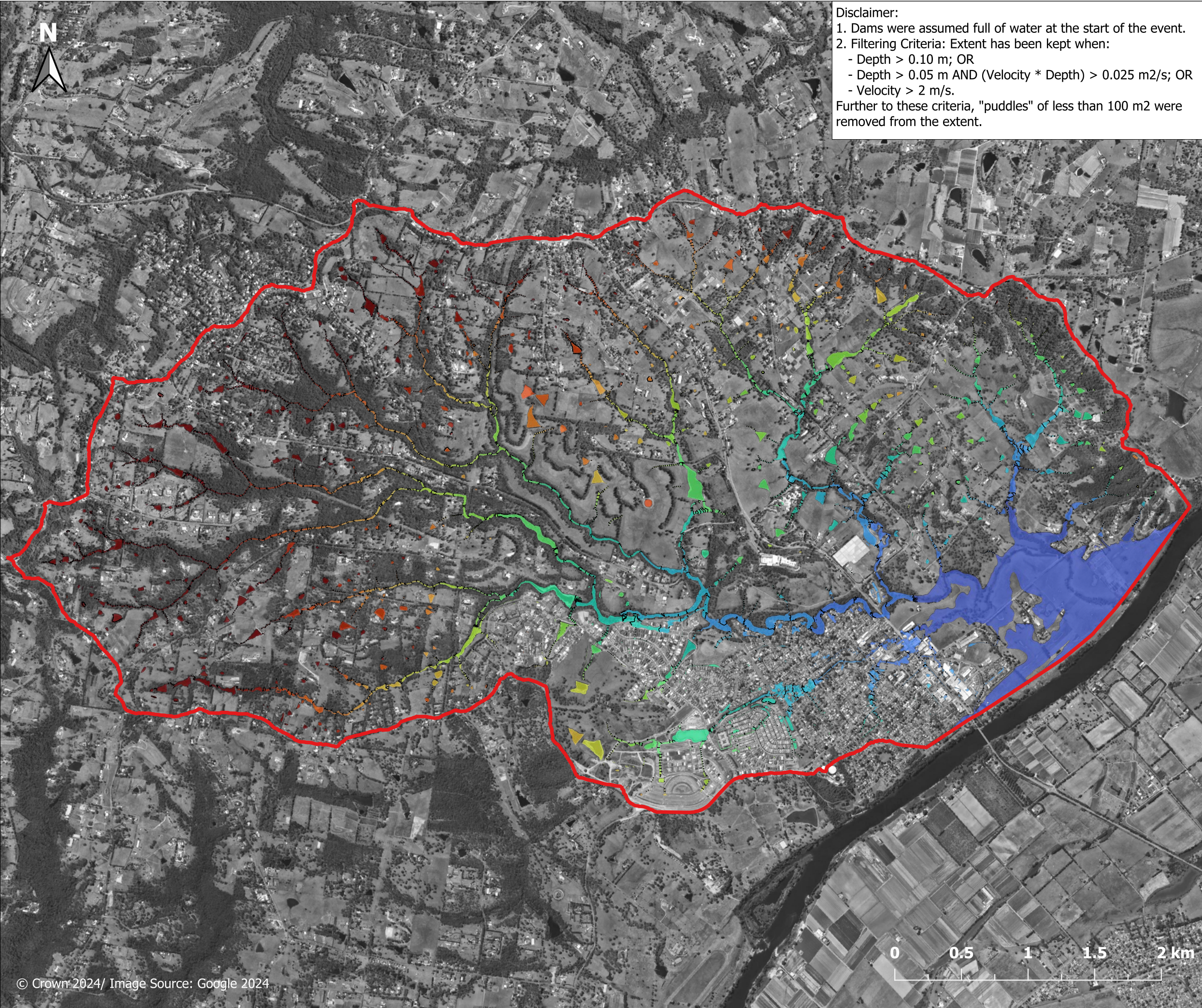


Report MHL3008

**Redbank Creek Flood
Study**



**Manly
Hydraulics
Laboratory**



Disclaimer:
 1. Dams were assumed full of water at the start of the event.
 2. Filtering Criteria: Extent has been kept when:
 - Depth > 0.10 m; OR
 - Depth > 0.05 m AND (Velocity * Depth) > 0.025 m²/s; OR
 - Velocity > 2 m/s.
 Further to these criteria, "puddles" of less than 100 m² were removed from the extent.

Figure E.1.5.1
Peak flood level
1% AEP event
North Richmond
Overview

Legend

- Study area
- 1 m contour

Peak water level (m AHD)

 <= 5	 50 - 55
 5 - 10	 55 - 60
 10 - 15	 60 - 65
 15 - 20	 65 - 70
 20 - 25	 70 - 75
 25 - 30	 75 - 80
 30 - 35	 80 - 85
 35 - 40	 85 - 90
 40 - 45	 90 - 95
 45 - 50	 > 95