



Figure D.6.1

**Model sensitivity
Double Design Blockage
North Richmond
Overview**

Legend

- Study area
- Afflux (m)**
- < -0.50
- 0.50 to -0.20
- 0.20 to -0.10
- 0.10 to -0.05
- 0.05 to -0.02
- 0.02 to -0.01
- 0.01 to 0.01
- 0.01 to 0.02
- 0.02 to 0.05
- 0.05 to 0.10
- 0.10 to 0.20
- 0.20 to 0.50
- > 0.50
- Was wet now dry
- Was dry now wet

Report MHL3008

**Redbank Creek Flood
Study**



**Manly
Hydraulics
Laboratory**





Figure D.6.2

**Model sensitivity
Double Design Blockage
East of North Richmond**

Legend

- Study area
- Afflux (m)**
- < -0.50
- 0.50 to -0.20
- 0.20 to -0.10
- 0.10 to -0.05
- 0.05 to -0.02
- 0.02 to -0.01
- 0.01 to 0.01
- 0.01 to 0.02
- 0.02 to 0.05
- 0.05 to 0.10
- 0.10 to 0.20
- 0.20 to 0.50
- > 0.50
- Was wet now dry
- Was dry now wet



Report MHL3008

**Redbank Creek Flood
Study**



**Manly
Hydraulics
Laboratory**

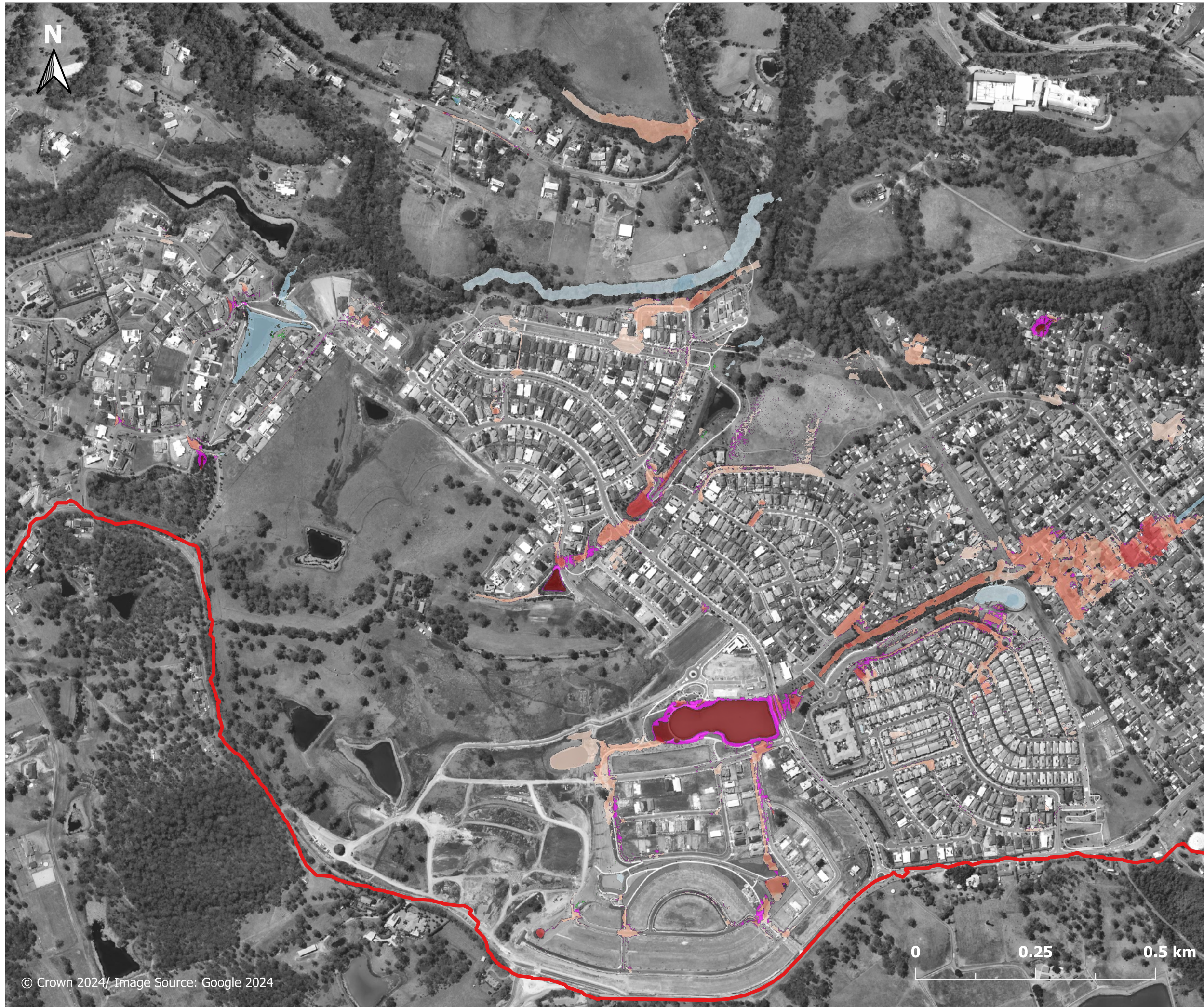
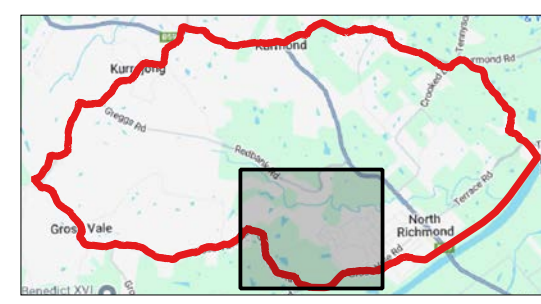


Figure D.6.3

**Model sensitivity
Double Design Blockage
West of North Richmond**

Legend

- Study area
- Afflux (m)**
- < -0.50
- 0.50 to -0.20
- 0.20 to -0.10
- 0.10 to -0.05
- 0.05 to -0.02
- 0.02 to -0.01
- 0.01 to 0.01
- 0.01 to 0.02
- 0.02 to 0.05
- 0.05 to 0.10
- 0.10 to 0.20
- 0.20 to 0.50
- > 0.50
- Was wet now dry
- Was dry now wet



Report MHL3008

Redbank Creek Flood Study





Figure D.7.1

**Model sensitivity
No Blockage
North Richmond
Overview**

Legend

- Study area
- Afflux (m)**
- < -0.50
- 0.50 to -0.20
- 0.20 to -0.10
- 0.10 to -0.05
- 0.05 to -0.02
- 0.02 to -0.01
- 0.01 to 0.01
- 0.01 to 0.02
- 0.02 to 0.05
- 0.05 to 0.10
- 0.10 to 0.20
- 0.20 to 0.50
- > 0.50
- Was wet now dry
- Was dry now wet

Report MHL3008
**Redbank Creek Flood
Study**





Figure D.7.2

**Model sensitivity
No Blockage
East of North Richmond**

Legend

- Study area
- Afflux (m)**
- < -0.50
- 0.50 to -0.20
- 0.20 to -0.10
- 0.10 to -0.05
- 0.05 to -0.02
- 0.02 to -0.01
- 0.01 to 0.01
- 0.01 to 0.02
- 0.02 to 0.05
- 0.05 to 0.10
- 0.10 to 0.20
- 0.20 to 0.50
- > 0.50
- Was wet now dry
- Was dry now wet



Report MHL3008
Redbank Creek Flood Study



© Crown 2024. Image source: Google 2024



Figure D.7.3
Model sensitivity
No Blockage
West of North Richmond

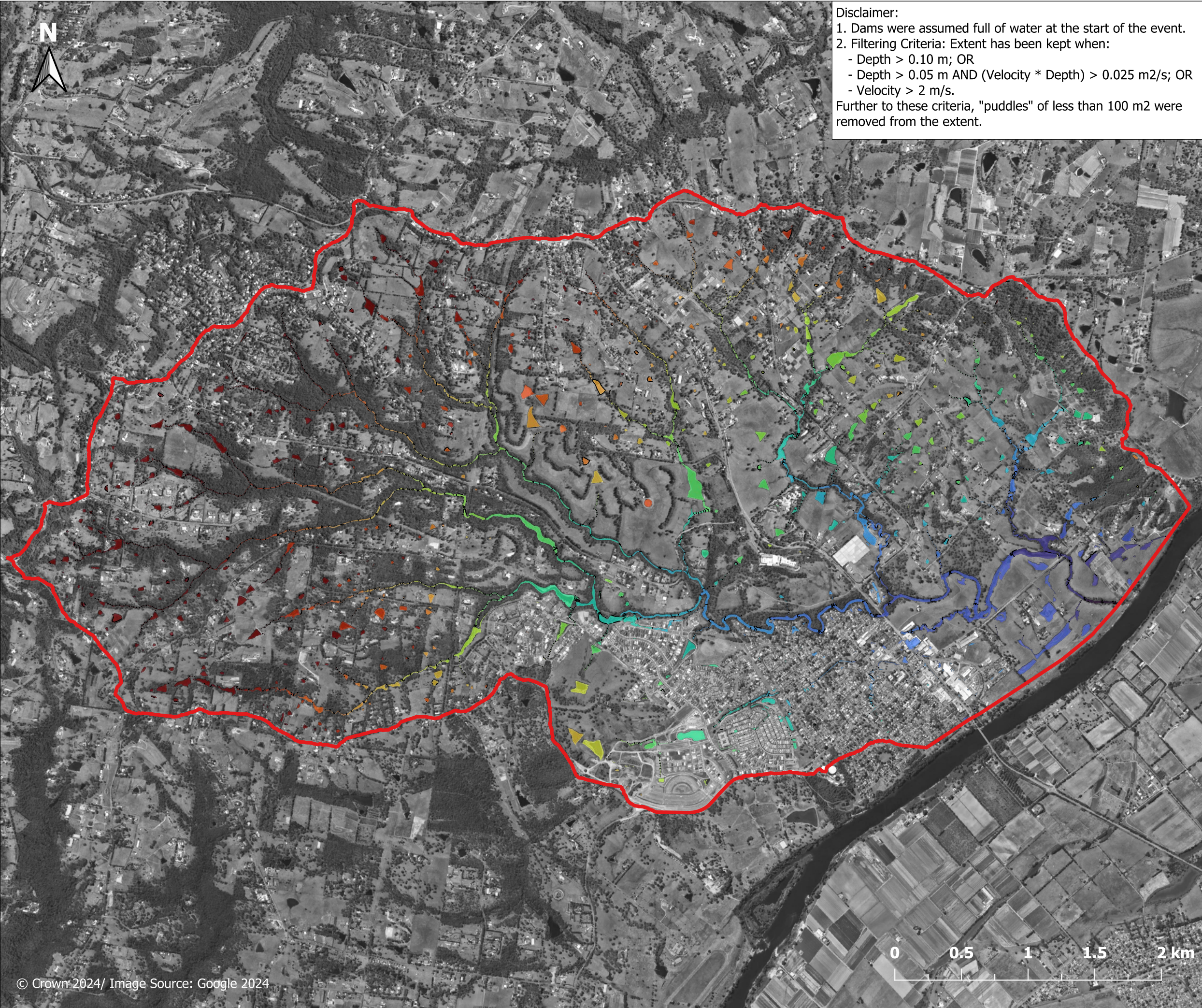
- Legend**
- Study area
 - Afflux (m)**
 - < -0.50
 - 0.50 to -0.20
 - 0.20 to -0.10
 - 0.10 to -0.05
 - 0.05 to -0.02
 - 0.02 to -0.01
 - 0.01 to 0.02
 - 0.02 to 0.05
 - 0.05 to 0.10
 - 0.10 to 0.20
 - 0.20 to 0.50
 - > 0.50
 - Was wet now dry
 - Was dry now wet



Report MHL3008
Redbank Creek Flood Study



DRAFT REPORT



Disclaimer:
 1. Dams were assumed full of water at the start of the event.
 2. Filtering Criteria: Extent has been kept when:
 - Depth > 0.10 m; OR
 - Depth > 0.05 m AND (Velocity * Depth) > 0.025 m²/s; OR
 - Velocity > 2 m/s.
 Further to these criteria, "puddles" of less than 100 m² were removed from the extent.

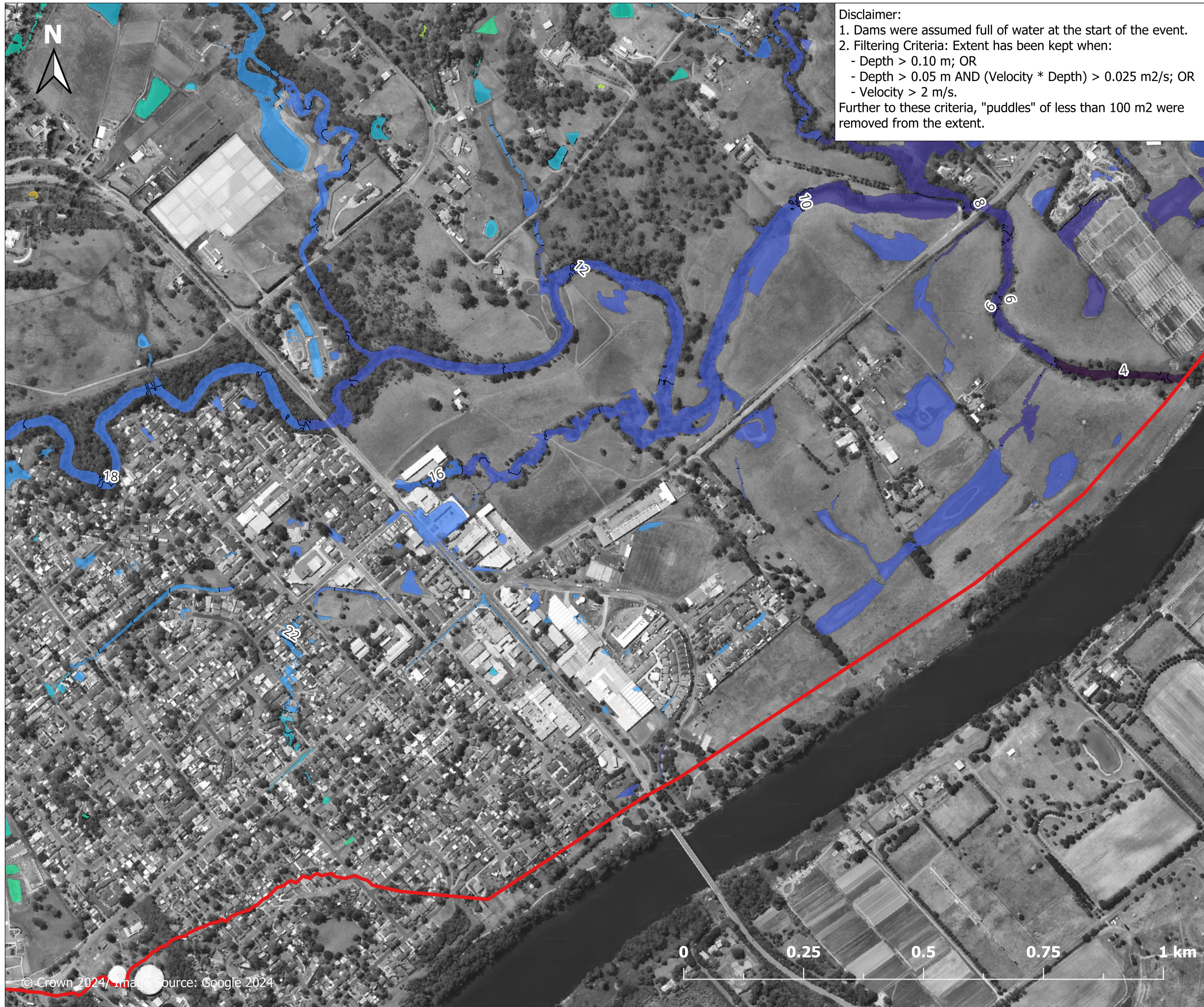
Figure E.1.1.1
Peak flood level
20% AEP event
North Richmond
Overview

Legend

- Study area
- 1 m contour

Peak water level (m AHD)

 <= 5	 50 - 55
 5 - 10	 55 - 60
 10 - 15	 60 - 65
 15 - 20	 65 - 70
 20 - 25	 70 - 75
 25 - 30	 75 - 80
 30 - 35	 80 - 85
 35 - 40	 85 - 90
 40 - 45	 90 - 95
 45 - 50	 > 95



Disclaimer:
 1. Dams were assumed full of water at the start of the event.
 2. Filtering Criteria: Extent has been kept when:
 - Depth > 0.10 m; OR
 - Depth > 0.05 m AND (Velocity * Depth) > 0.025 m²/s; OR
 - Velocity > 2 m/s.
 Further to these criteria, "puddles" of less than 100 m² were removed from the extent.

Figure E.1.1.2

**Peak flood level
 20% AEP event
 East of North
 Richmond**

Legend

Study area
 1 m contour

Peak water level (m AHD)

	<= 5		50 - 55
	5 - 10		55 - 60
	10 - 15		60 - 65
	15 - 20		65 - 70
	20 - 25		70 - 75
	25 - 30		75 - 80
	30 - 35		80 - 85
	35 - 40		85 - 90
	40 - 45		90 - 95
	45 - 50		> 95



Report MHL3008

**Redbank Creek Flood
 Study**



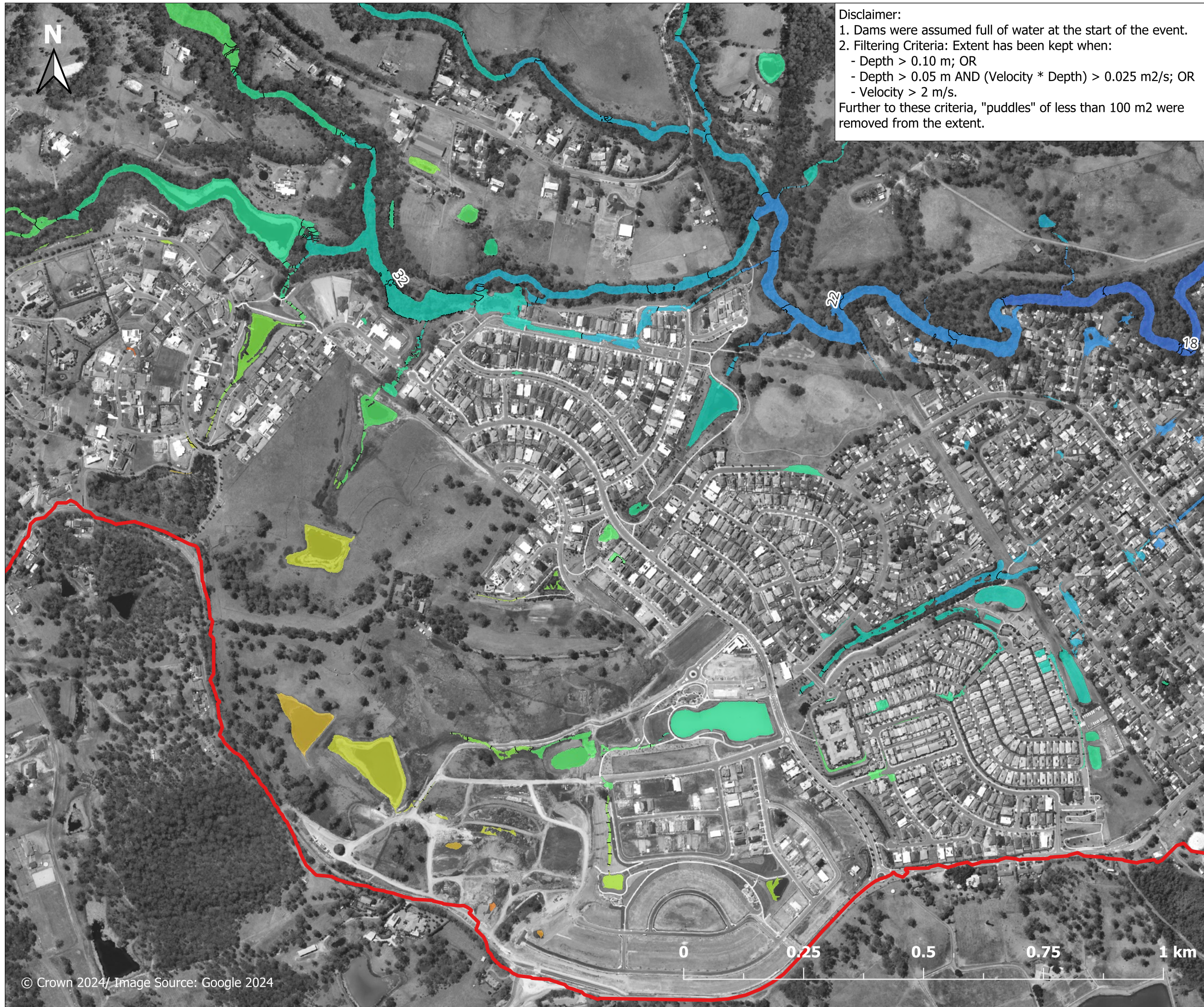
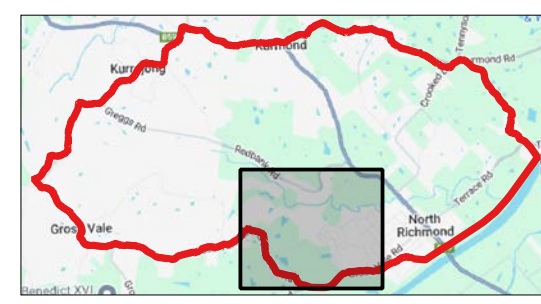


Figure E.1.1.3

**Peak flood level
 20% AEP event
 West of North
 Richmond**

Legend

- Study area
 - 1 m contour
- Peak water level (m AHD)**
- | | |
|---|---|
| <= 5 | 50 - 55 |
| 5 - 10 | 55 - 60 |
| 10 - 15 | 60 - 65 |
| 15 - 20 | 65 - 70 |
| 20 - 25 | 70 - 75 |
| 25 - 30 | 75 - 80 |
| 30 - 35 | 80 - 85 |
| 35 - 40 | 85 - 90 |
| 40 - 45 | 90 - 95 |
| 45 - 50 | > 95 |

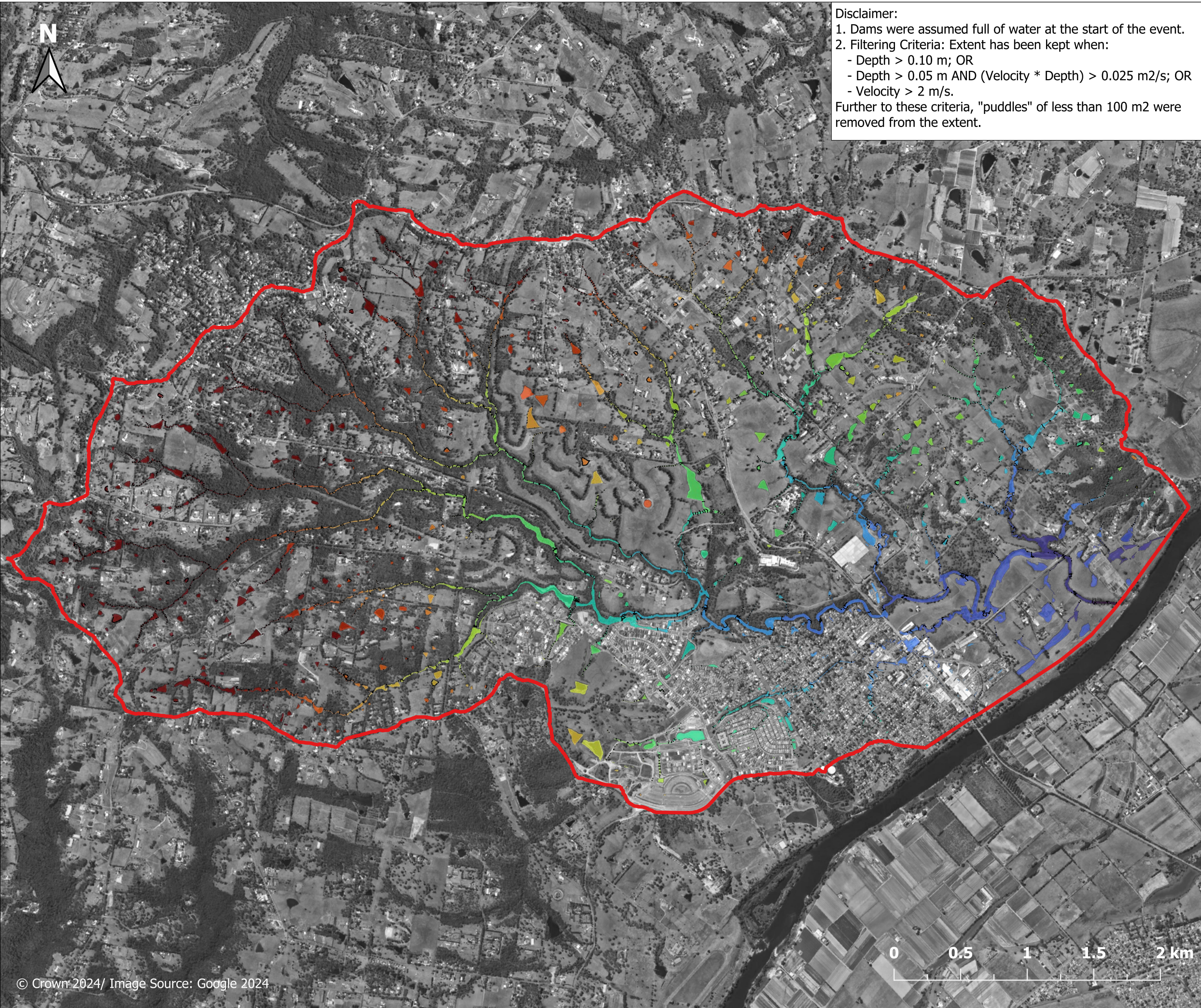


Report MHL3008

**Redbank Creek Flood
 Study**



**Manly
 Hydraulics
 Laboratory**



Disclaimer:
 1. Dams were assumed full of water at the start of the event.
 2. Filtering Criteria: Extent has been kept when:
 - Depth > 0.10 m; OR
 - Depth > 0.05 m AND (Velocity * Depth) > 0.025 m²/s; OR
 - Velocity > 2 m/s.
 Further to these criteria, "puddles" of less than 100 m² were removed from the extent.

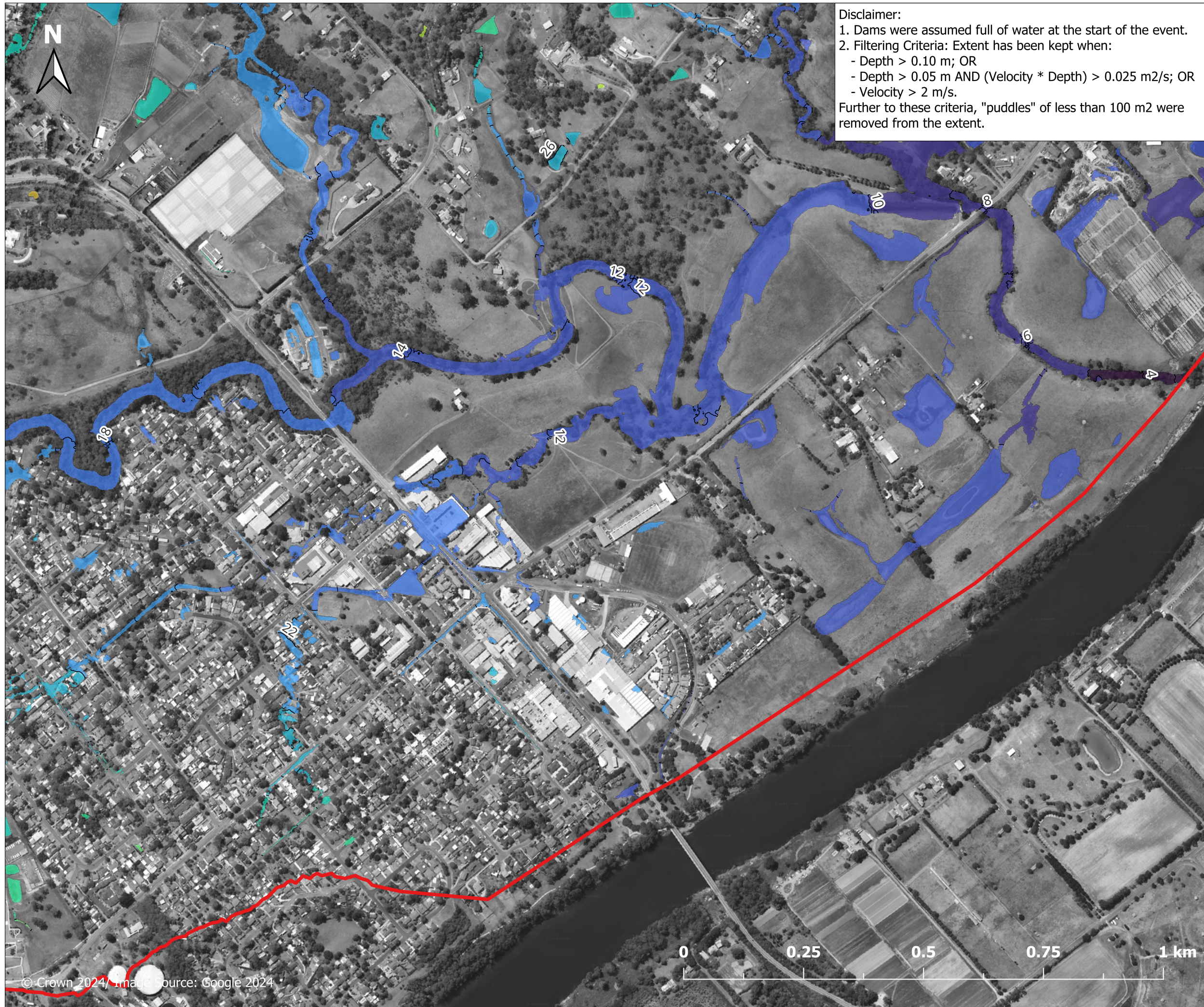
Figure E.1.2.1
Peak flood level
10% AEP event
North Richmond
Overview

Legend

- Study area
- 1 m contour

Peak water level (m AHD)

<ul style="list-style-type: none"> <= 5 5 - 10 10 - 15 15 - 20 20 - 25 25 - 30 30 - 35 35 - 40 40 - 45 45 - 50 	<ul style="list-style-type: none"> 50 - 55 55 - 60 60 - 65 65 - 70 70 - 75 75 - 80 80 - 85 85 - 90 90 - 95 > 95
---	--



Disclaimer:
 1. Dams were assumed full of water at the start of the event.
 2. Filtering Criteria: Extent has been kept when:
 - Depth > 0.10 m; OR
 - Depth > 0.05 m AND (Velocity * Depth) > 0.025 m²/s; OR
 - Velocity > 2 m/s.
 Further to these criteria, "puddles" of less than 100 m² were removed from the extent.

Figure E.1.2.2
Peak flood level
10% AEP event
East of North
Richmond

Legend

- Study area
- 1 m contour

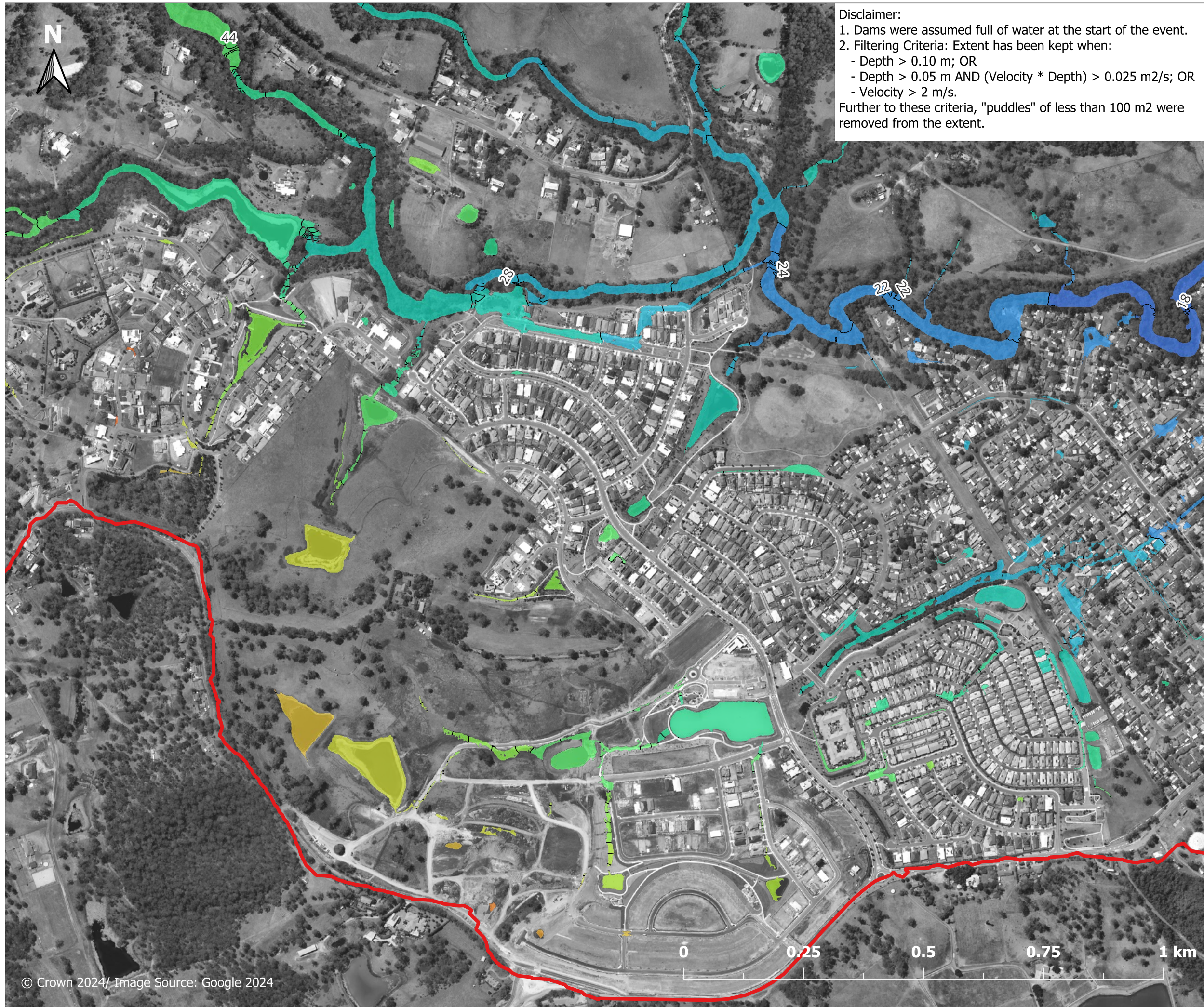
Peak water level (m AHD)

<ul style="list-style-type: none"> <= 5 5 - 10 10 - 15 15 - 20 20 - 25 25 - 30 30 - 35 35 - 40 40 - 45 45 - 50 	<ul style="list-style-type: none"> 50 - 55 55 - 60 60 - 65 65 - 70 70 - 75 75 - 80 80 - 85 85 - 90 90 - 95 > 95
---	--



Report MHL3008
Redbank Creek Flood
Study





Disclaimer:
 1. Dams were assumed full of water at the start of the event.
 2. Filtering Criteria: Extent has been kept when:
 - Depth > 0.10 m; OR
 - Depth > 0.05 m AND (Velocity * Depth) > 0.025 m²/s; OR
 - Velocity > 2 m/s.
 Further to these criteria, "puddles" of less than 100 m² were removed from the extent.

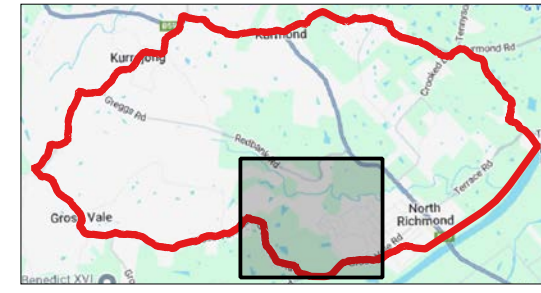
Figure E.1.2.3
Peak flood level
10% AEP event
West of North
Richmond

Legend

- Study area
- 1 m contour

Peak water level (m AHD)

<ul style="list-style-type: none"> <= 5 5 - 10 10 - 15 15 - 20 20 - 25 25 - 30 30 - 35 35 - 40 40 - 45 45 - 50 	<ul style="list-style-type: none"> 50 - 55 55 - 60 60 - 65 65 - 70 70 - 75 75 - 80 80 - 85 85 - 90 90 - 95 > 95
---	--



Report MHL3008
Redbank Creek Flood
Study

