



## **Attachment 2 to Item 10.1.2.**

---

Draft Hawkesbury Section 7.12 Plan 2024 – Annexure A –  
Work Schedule Map

Date of meeting: 13 August 2024

Location: Council Chambers

Time: 6:30pm

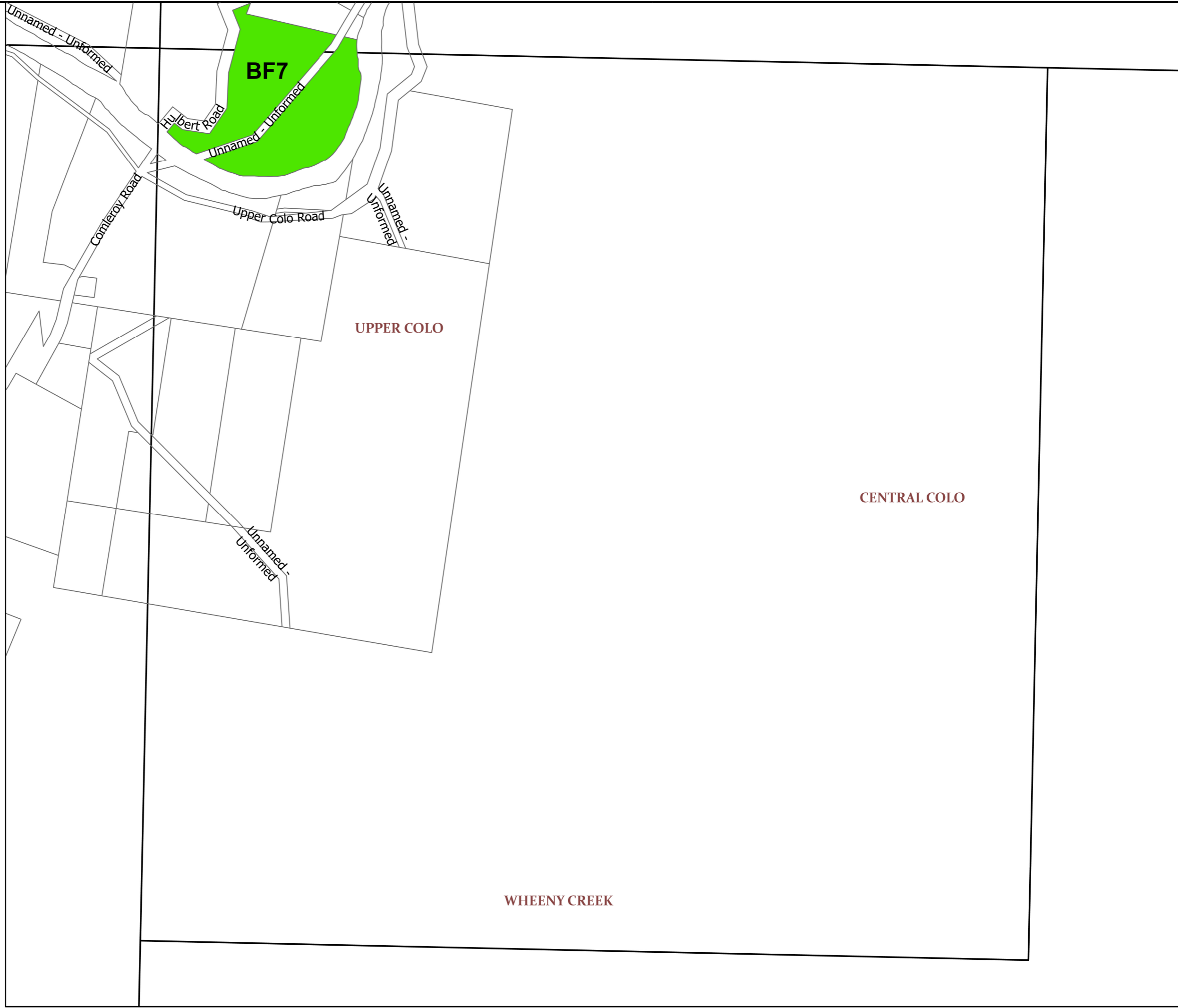
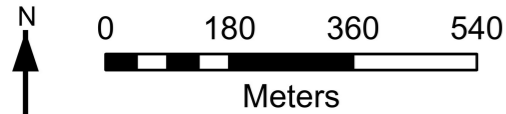
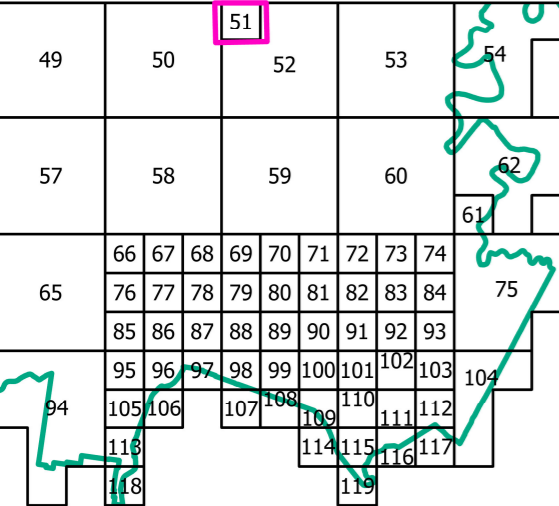
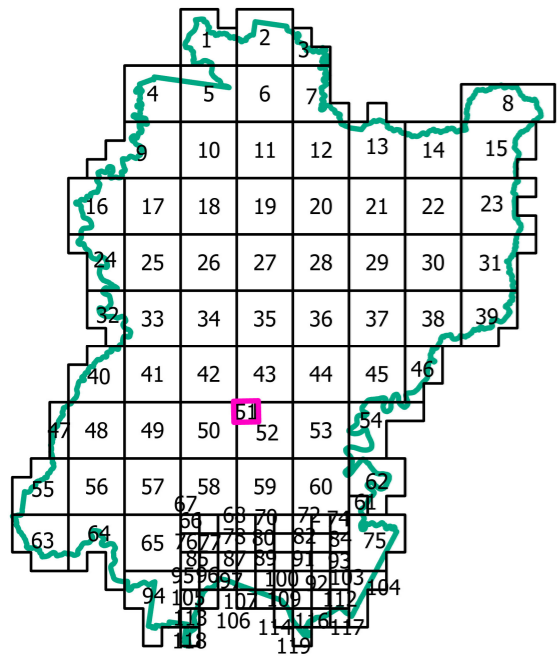


Section 7.12 Contribution Plan

## SHEET 51

### LEGEND





- Section 7.12 Work Schedule Items
- Section 7.12 Work Schedule Items (footpaths and guardrails)
- Cadastre 11/06/2024 © DCS – Spatial Services
- LGA Boundary

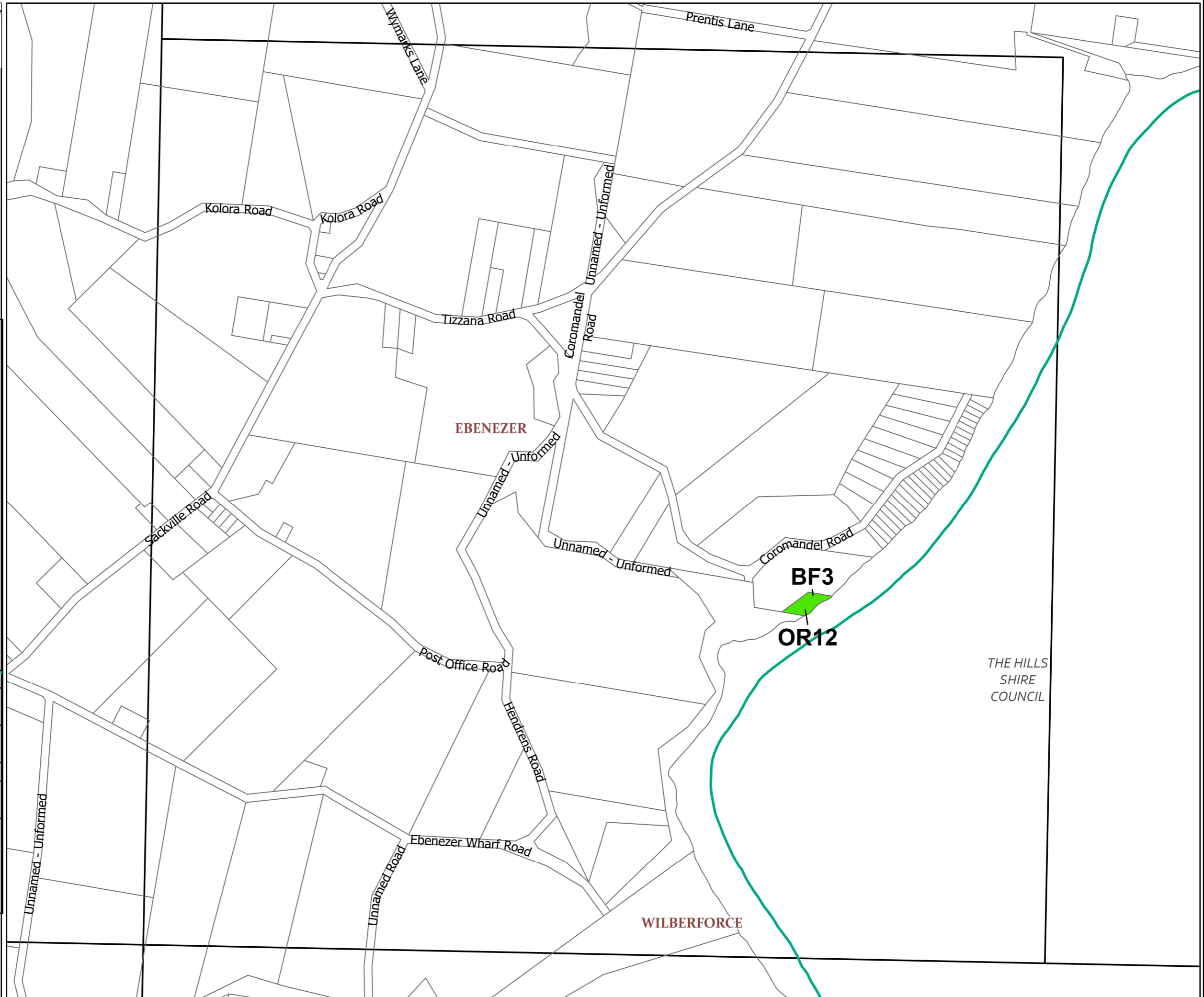
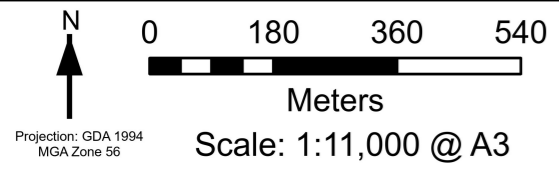
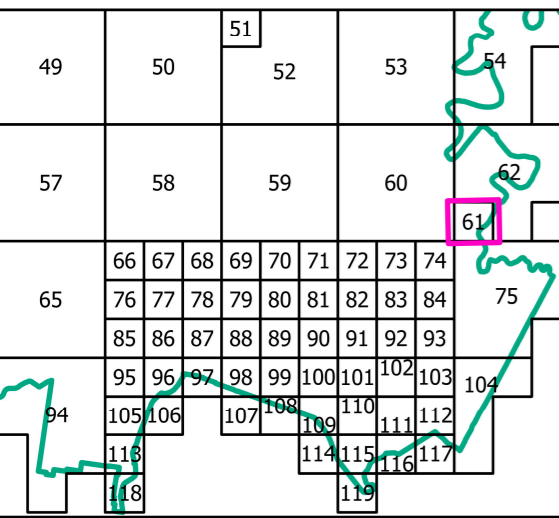
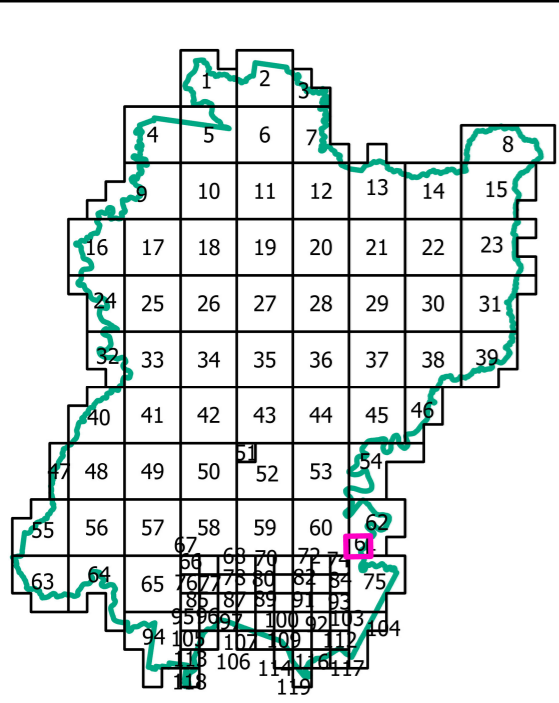


Section 7.12 Contribution Plan

## SHEET 61

### LEGEND

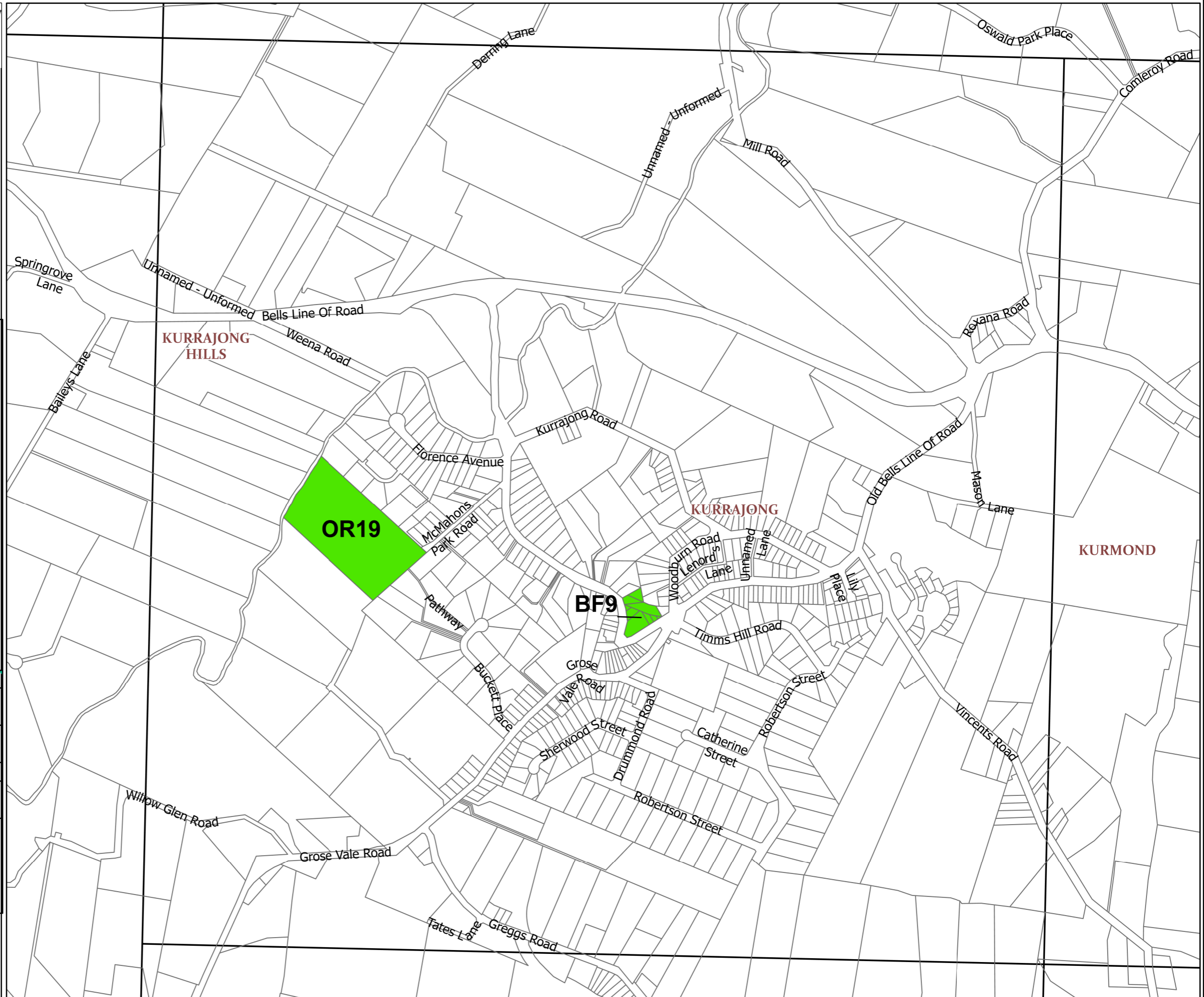
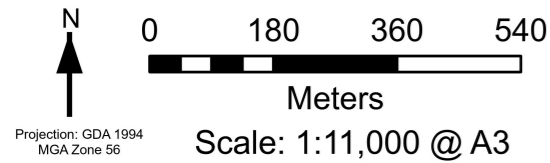
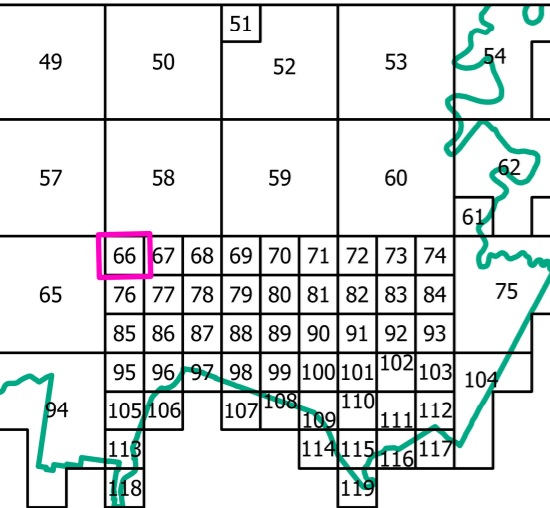
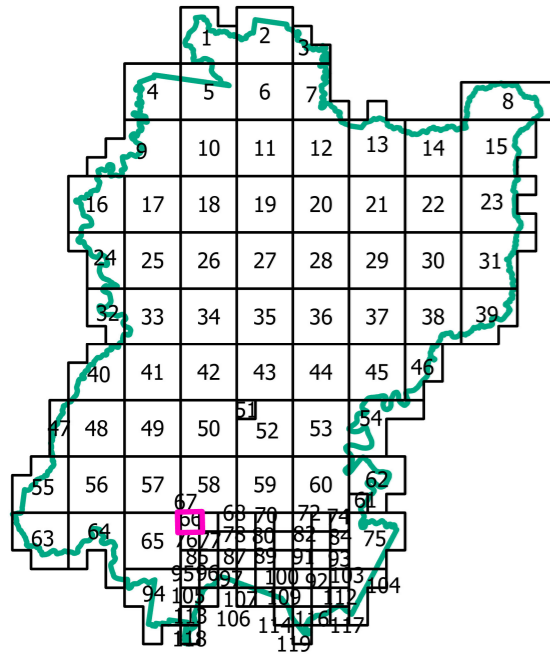
-  Section 7.12 Work Schedule Items
-  Section 7.12 Work Schedule Items (footpaths and guardrails)
-  Cadastre 11/06/2024 © DCS – Spatial Services
-  LGA Boundary





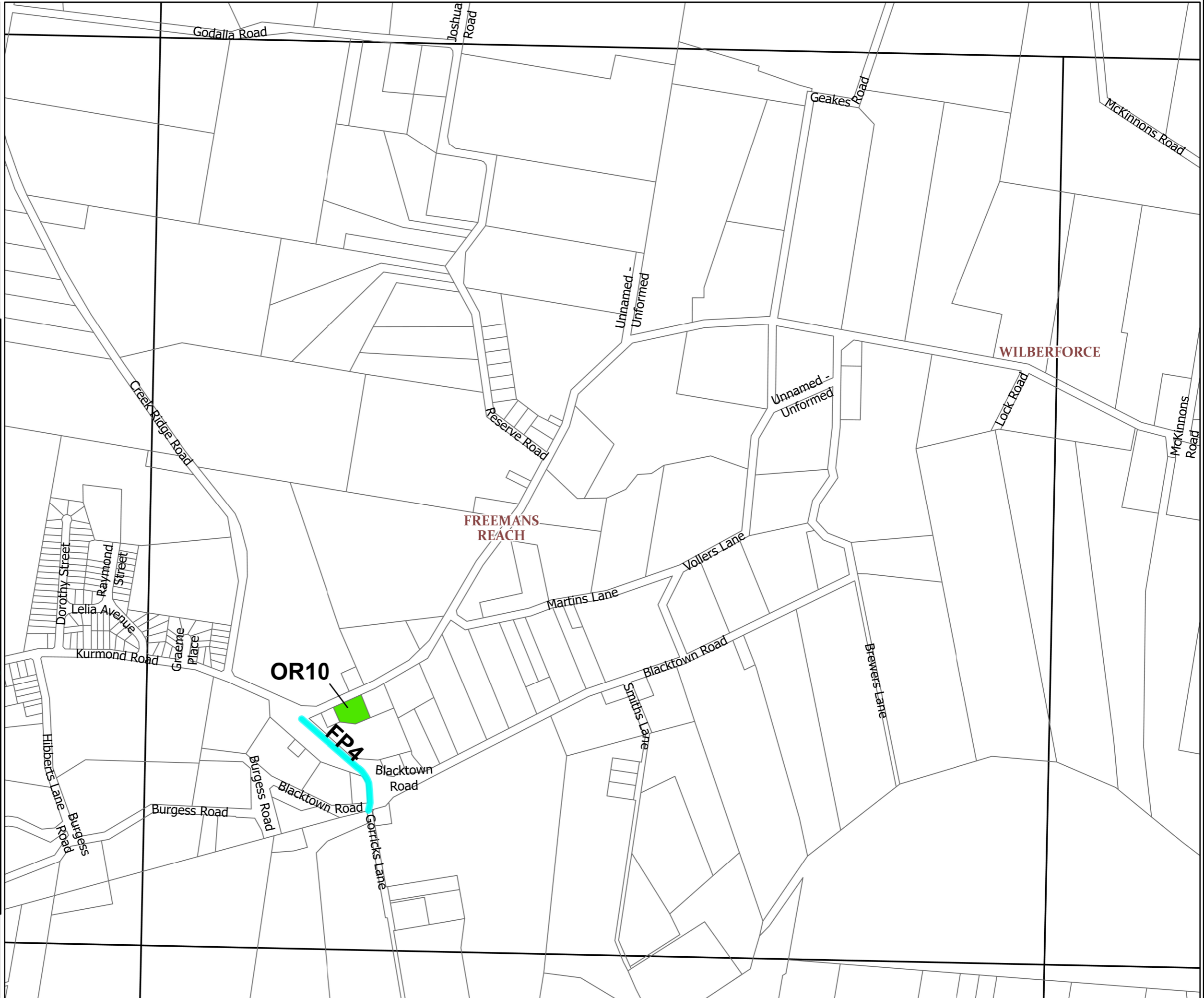
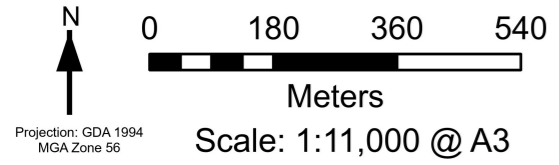
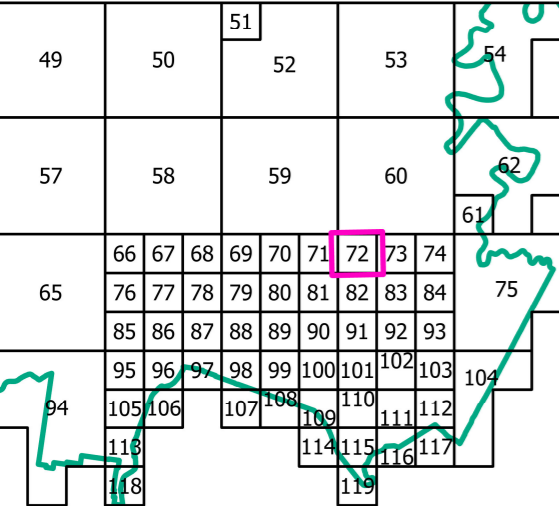
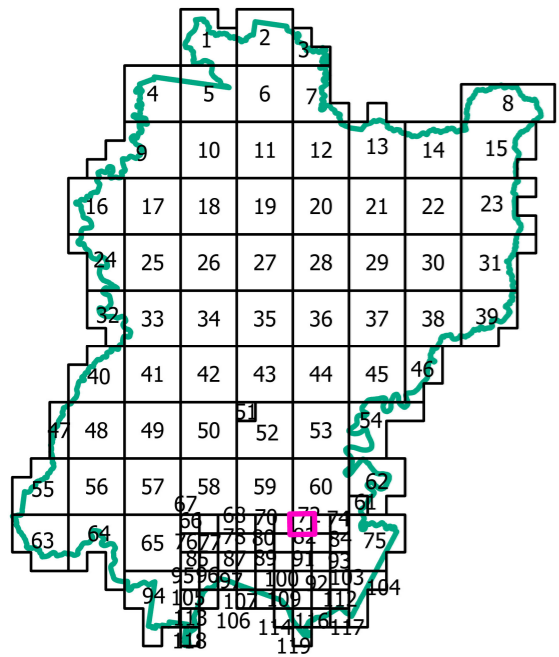
### LEGEND

- Section 7.12 Work Schedule Items
- Section 7.12 Work Schedule Items (footpaths and guardrails)
- Cadastre 11/06/2024 © DCS – Spatial Services
- LGA Boundary



### LEGEND

- Section 7.12 Work Schedule Items
- Section 7.12 Work Schedule Items (footpaths and guardrails)
- Cadastre 11/06/2024 © DCS – Spatial Services
- LGA Boundary





Section 7.12 Contribution Plan

## SHEET 73

### LEGEND

- Section 7.12 Work Schedule Items
- Section 7.12 Work Schedule Items (footpaths and guardrails)
- Cadastre 11/06/2024 © DCS – Spatial Services
- LGA Boundary

