



Figure D.1
Model sensitivity
Tailwater
1% AEP event

Legend

Study area

Tailwater scenario
flood extent

- 50% AEP = 6.7 m AHD
- 20% AEP = 12.3 m AHD
- 10% AEP = 14.5 m AHD
- 5% AEP = 15.6 m AHD

Report MHL3008

Redbank Creek Flood
Study



Manly
Hydraulics
Laboratory

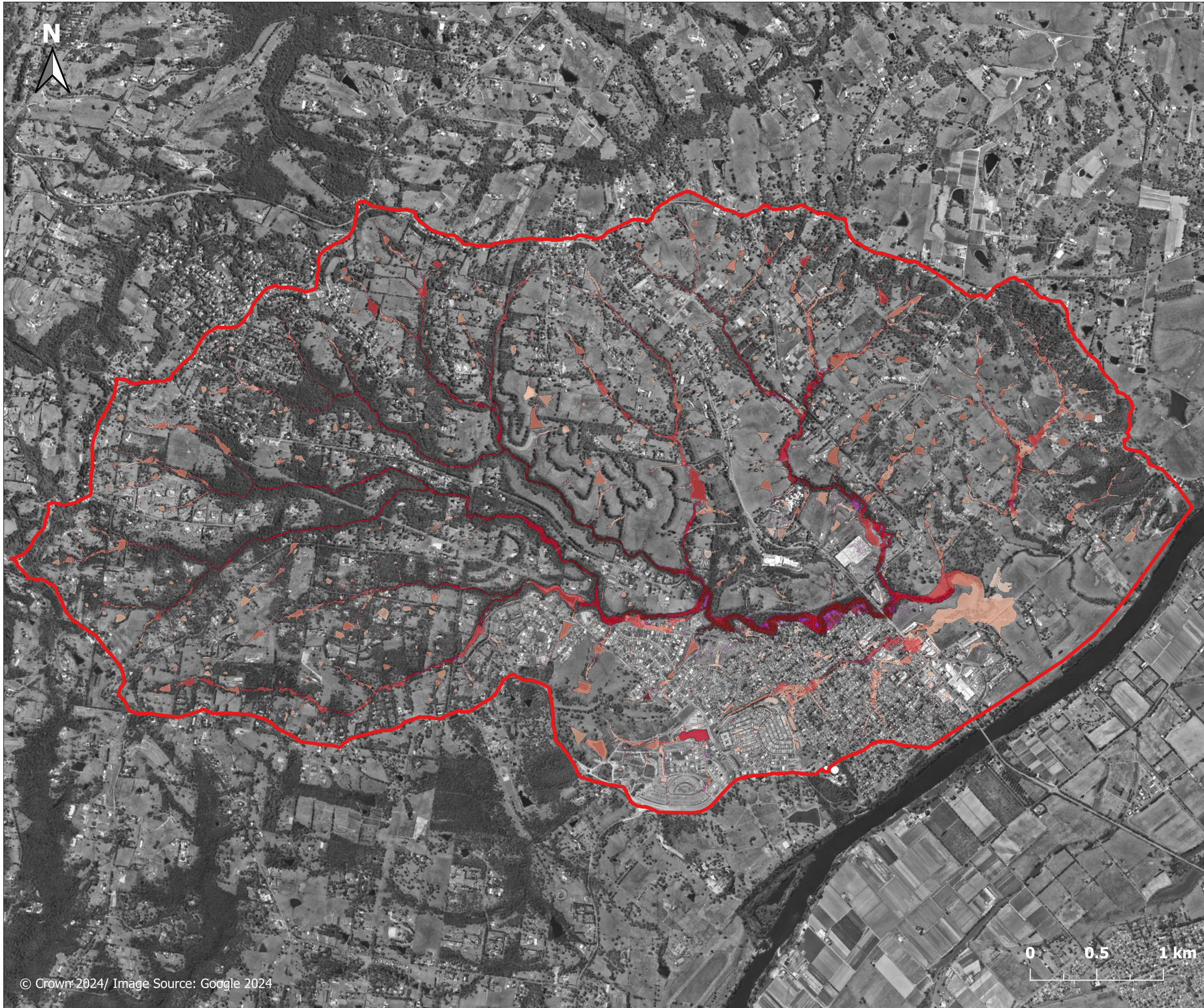


Figure D.2.1

**Model sensitivity
No loss
North Richmond
Overview**

Legend

- Study area
- Afflux (m)**
- < -0.50
- 0.50 to -0.20
- 0.20 to -0.10
- 0.10 to -0.05
- 0.05 to -0.02
- 0.02 to -0.01
- 0.01 to 0.01
- 0.01 to 0.02
- 0.02 to 0.05
- 0.05 to 0.10
- 0.10 to 0.20
- 0.20 to 0.50
- > 0.50
- Was wet now dry
- Was dry now wet

Report MHL3008
**Redbank Creek Flood
Study**



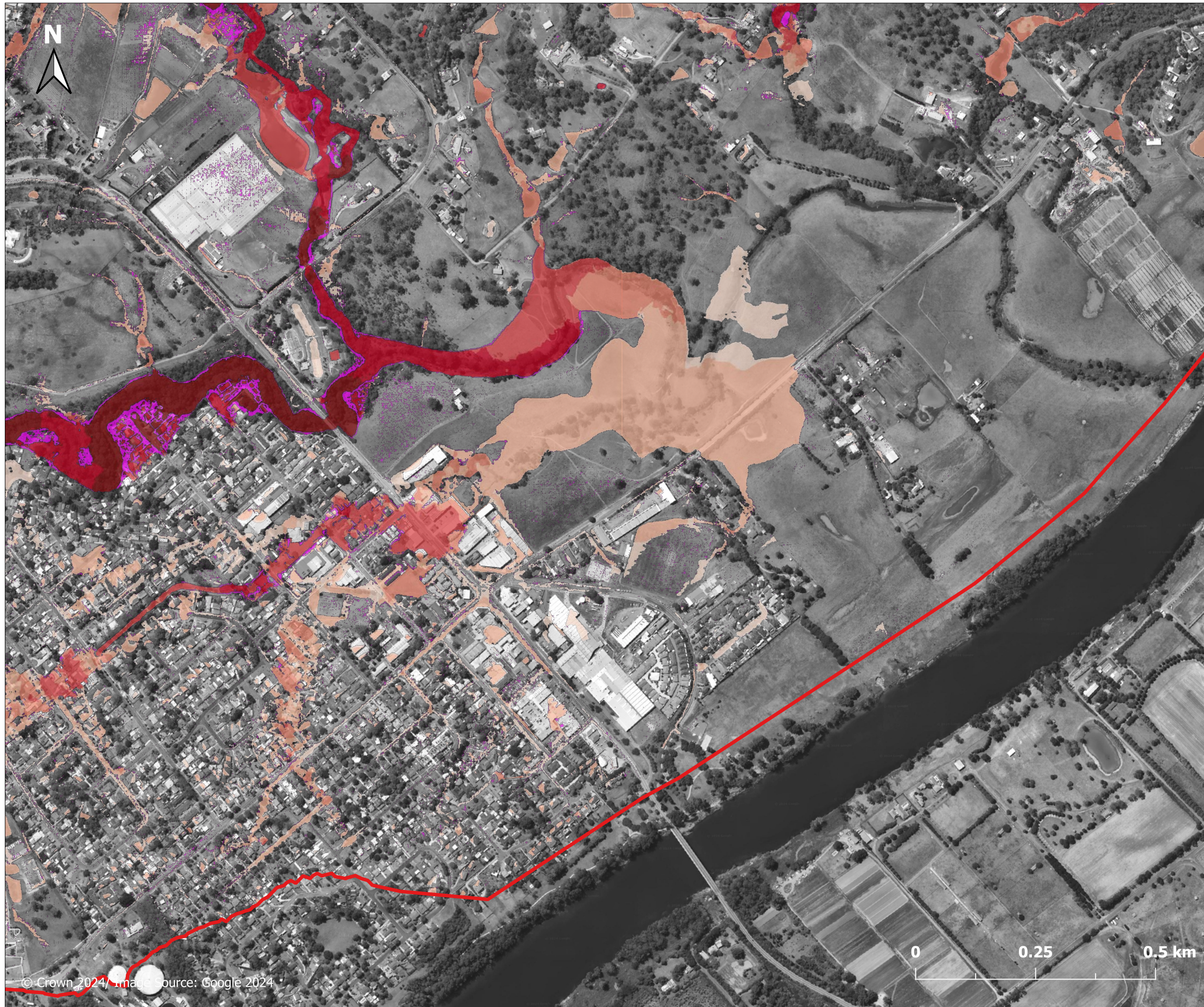
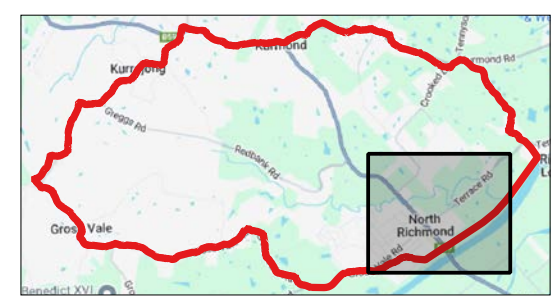


Figure D.2.2
Model sensitivity
No loss
East of North Richmond

Legend

- Study area
- Afflux (m)**
- < -0.50
- 0.50 to -0.20
- 0.20 to -0.10
- 0.10 to -0.05
- 0.05 to -0.02
- 0.02 to -0.01
- 0.01 to 0.01
- 0.01 to 0.02
- 0.02 to 0.05
- 0.05 to 0.10
- 0.10 to 0.20
- 0.20 to 0.50
- > 0.50
- Was wet now dry
- Was dry now wet



Report MHL3008
Redbank Creek Flood Study



© Crown 2024. Image source: Google 2024

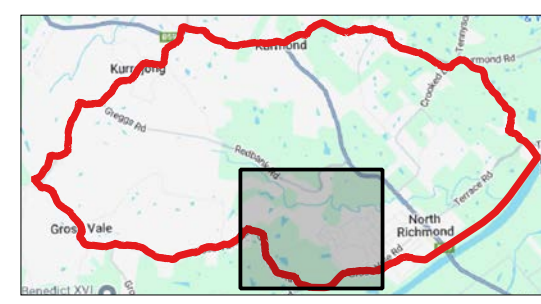


Figure D.2.3

**Model sensitivity
No loss
West of North Richmond**

Legend

- Study area
- Afflux (m)**
- < -0.50
- 0.50 to -0.20
- 0.20 to -0.10
- 0.10 to -0.05
- 0.05 to -0.02
- 0.02 to -0.01
- 0.01 to 0.01
- 0.01 to 0.02
- 0.02 to 0.05
- 0.05 to 0.10
- 0.10 to 0.20
- 0.20 to 0.50
- > 0.50
- Was wet now dry
- Was dry now wet



Report MHL3008
Redbank Creek Flood Study





Figure D.3.1

**Model sensitivity
ARR2019 losses
North Richmond
Overview**

Legend

- Study area
- Afflux (m)**
- < -0.50
- 0.50 to -0.20
- 0.20 to -0.10
- 0.10 to -0.05
- 0.05 to -0.02
- 0.02 to -0.01
- 0.01 to 0.01
- 0.01 to 0.02
- 0.02 to 0.05
- 0.05 to 0.10
- 0.10 to 0.20
- 0.20 to 0.50
- > 0.50
- Was wet now dry
- Was dry now wet



Figure D.3.2

**Model sensitivity
ARR2019 losses
East of North Richmond**

Legend

- Study area
- Afflux (m)**
- < -0.50
- 0.50 to -0.20
- 0.20 to -0.10
- 0.10 to -0.05
- 0.05 to -0.02
- 0.02 to -0.01
- 0.01 to 0.01
- 0.01 to 0.02
- 0.02 to 0.05
- 0.05 to 0.10
- 0.10 to 0.20
- 0.20 to 0.50
- > 0.50
- Was wet now dry
- Was dry now wet



Report MHL3008

**Redbank Creek Flood
Study**



**Manly
Hydraulics
Laboratory**

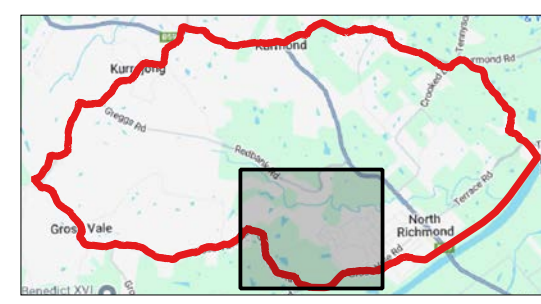


Figure D.3.3

**Model sensitivity
ARR2019 losses
West of North Richmond**

Legend

- Study area
- Afflux (m)**
- < -0.50
- 0.50 to -0.20
- 0.20 to -0.10
- 0.10 to -0.05
- 0.05 to -0.02
- 0.02 to -0.01
- 0.01 to 0.01
- 0.01 to 0.02
- 0.02 to 0.05
- 0.05 to 0.10
- 0.10 to 0.20
- 0.20 to 0.50
- > 0.50
- Was wet now dry
- Was dry now wet



Report MHL3008
Redbank Creek Flood Study





Figure D.4.1

Model sensitivity
Roughness increased by
20%
North Richmond
Overview

Legend

- Study area
- Afflux (m)**
- < -0.50
- 0.50 to -0.20
- 0.20 to -0.10
- 0.10 to -0.05
- 0.05 to -0.02
- 0.02 to -0.01
- 0.01 to 0.01
- 0.01 to 0.02
- 0.02 to 0.05
- 0.05 to 0.10
- 0.10 to 0.20
- 0.20 to 0.50
- > 0.50
- Was wet now dry
- Was dry now wet

Report MHL3008

Redbank Creek Flood
Study



Manly
Hydraulics
Laboratory



Figure D.4.2

Model sensitivity
Roughness increased by 20%
East of North Richmond

Legend

- Study area
- Afflux (m)**
- < -0.50
- 0.50 to -0.20
- 0.20 to -0.10
- 0.10 to -0.05
- 0.05 to -0.02
- 0.02 to -0.01
- 0.01 to 0.01
- 0.01 to 0.02
- 0.02 to 0.05
- 0.05 to 0.10
- 0.10 to 0.20
- 0.20 to 0.50
- > 0.50
- Was wet now dry
- Was dry now wet



Report MHL3008
Redbank Creek Flood Study





Figure D.4.3
Model sensitivity
Roughness increased by
20%
West of North Richmond

Legend

- Study area

Afflux (m)

- < -0.50
- 0.50 to -0.20
- 0.20 to -0.10
- 0.10 to -0.05
- 0.05 to -0.02
- 0.02 to -0.01
- 0.01 to 0.01
- 0.01 to 0.02
- 0.02 to 0.05
- 0.05 to 0.10
- 0.10 to 0.20
- 0.20 to 0.50
- > 0.50
- Was wet now dry
- Was dry now wet



Report MHL3008
Redbank Creek Flood
Study



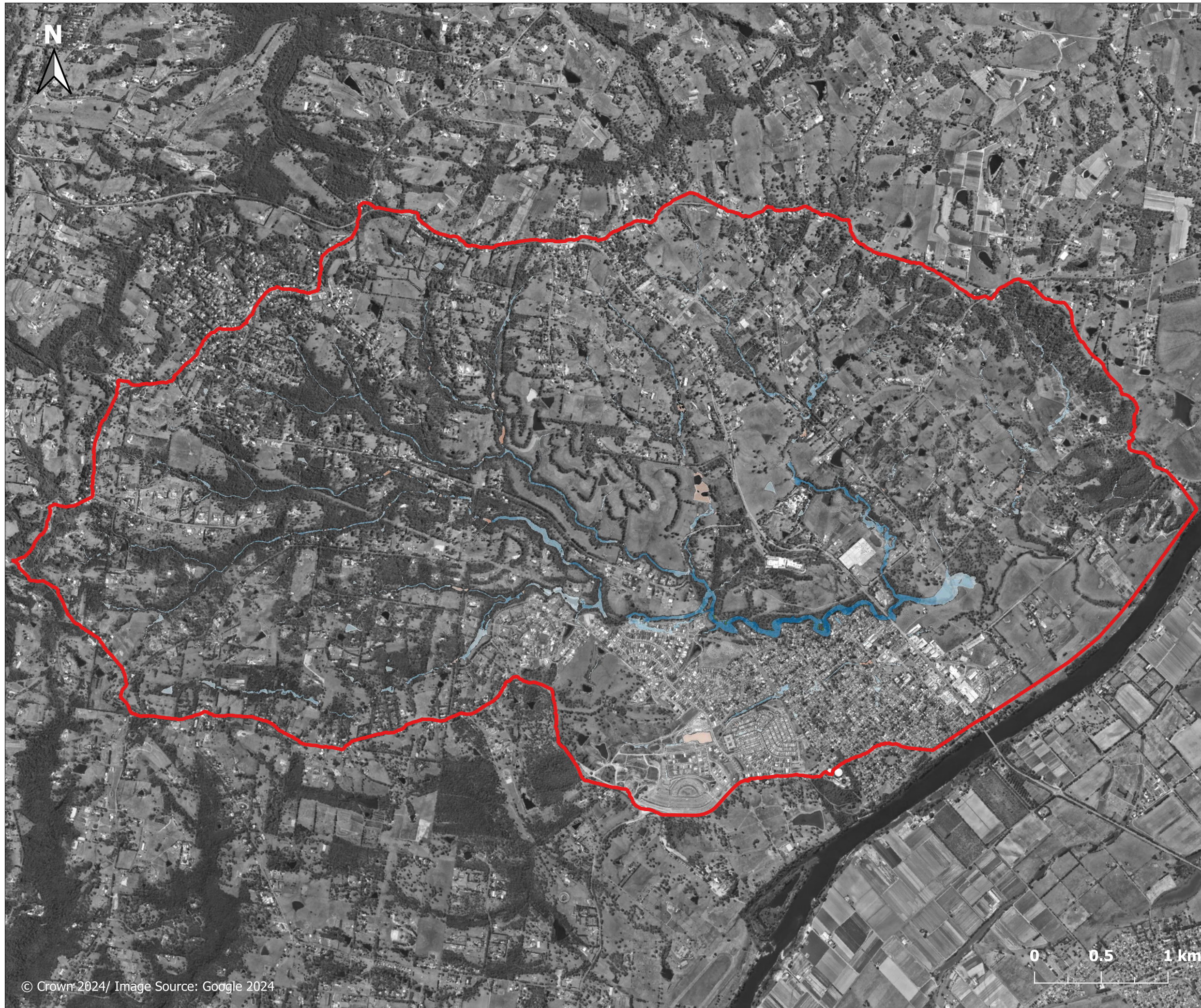


Figure D.5.1

Model sensitivity
Roughness decreased by
20%
North Richmond
Overview

Legend

- Study area
- Afflux (m)**
- < -0.50
- 0.50 to -0.20
- 0.20 to -0.10
- 0.10 to -0.05
- 0.05 to -0.02
- 0.02 to -0.01
- 0.01 to 0.01
- 0.01 to 0.02
- 0.02 to 0.05
- 0.05 to 0.10
- 0.10 to 0.20
- 0.20 to 0.50
- > 0.50
- Was wet now dry
- Was dry now wet

Report MHL3008
Redbank Creek Flood
Study



Manly
Hydraulics
Laboratory



Figure D.5.2

Model sensitivity
Roughness decreased by 20%
East of North Richmond

Legend

- Study area
- Afflux (m)**
- < -0.50
- 0.50 to -0.20
- 0.20 to -0.10
- 0.10 to -0.05
- 0.05 to -0.02
- 0.02 to -0.01
- 0.01 to 0.01
- 0.01 to 0.02
- 0.02 to 0.05
- 0.05 to 0.10
- 0.10 to 0.20
- 0.20 to 0.50
- > 0.50
- Was wet now dry
- Was dry now wet



Report MHL3008
Redbank Creek Flood Study



© Crown 2024. Image source: Google 2024

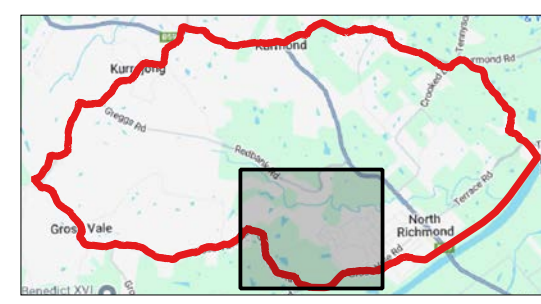


Figure D.5.3

Model sensitivity
Roughness decreased by 20%
West of North Richmond

Legend

- Study area
- Afflux (m)**
- < -0.50
- 0.50 to -0.20
- 0.20 to -0.10
- 0.10 to -0.05
- 0.05 to -0.02
- 0.02 to -0.01
- 0.01 to 0.01
- 0.01 to 0.02
- 0.02 to 0.05
- 0.05 to 0.10
- 0.10 to 0.20
- 0.20 to 0.50
- > 0.50
- Was wet now dry
- Was dry now wet



Report MHL3008

Redbank Creek Flood Study



Manly Hydraulics Laboratory